

Free! Free! Free!

SATURDAY ONLY

\$7 Fancy Silk Vest Free

with every made-to-measure
Suit or Overcoat order . . .

Suit or Overcoat

\$15

UNION MADE
Guaranteed All
Wool

Remember we are
the **World's Largest**
Union Tailors and
originators of the
\$15 idea.

WE ARE TAILORS NOT AGENTS
WARNING! The famous "Dun-
dee" System is
widely imitated. We have no con-
nection with any other store in
this city and therefore urge you
to come to the right place.

We save you the middleman's profit. The
best in style, workmanship, and fit absolutely
guaranteed.

Dundee Woolen Mills

Northwest Cor. 15th and Harney Sts.

OPEN SATURDAYS UNTIL 10 P. M.

Send for Our Sample Folder and Style Plate



Have you ever visited FLORIDA?

If so, you're going again; and if you want to get
the greatest possible comfort and enjoyment out
of the trip, see that your ticket reads over the
FRISCO LINES, and take the

Kansas City--Florida Special

OUT OF KANSAS CITY AT 8:20 P. M. EVERY DAY.

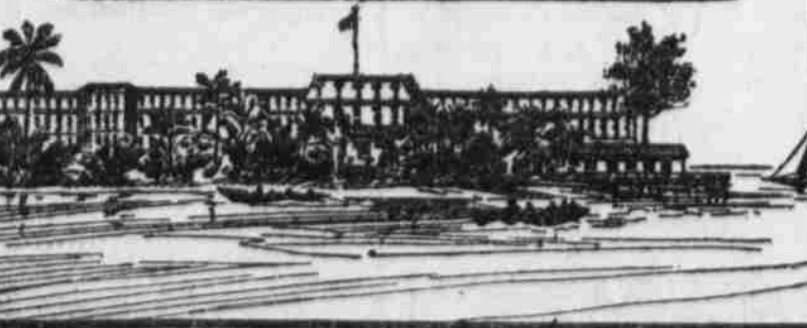
It's as fine and as safe as a train can be made. The
coaches are all-steel, electric-lighted, and equipped with
electric fans. The sleepers are of the latest design. The
dining cars are constructed of steel, and the meals are
served under the management of FRED HARVEY.

If you have never visited Florida in winter, you have
missed more than you realize. Better post yourself right
away on what Florida has to offer--its perfect winter climate,
its grand hotels, its hundred-and-one outdoor sports.

Last Chance to See the Panama Canal Work
before the water is turned in. Eight personally-conducted tours
in the steamship "Evangelina," from Key West to Colon, returning
via Kingston and Havana. The vessel is new, built in Scotland
during 1911-12, especially for touring the tropics. It is equipped with
Marconi wireless service, electric lights and fans, and all modern
conveniences and luxuries. It will leave Key West January 7th
and 14th; February 4th and 11th; March 4th and 11th; April 1st and 8th.
An eleven day trip, including meals and berth at sea and in port, for
\$110. Stopover privileges granted at Colon, Havana and Kingston.
Fares, Train Schedules, Pullman and Steamship Reservations, and
Descriptive Literature may be obtained by calling upon or addressing



J. C. Lovrien,
Division Passenger Agent, Frisco Lines,
Waldheim Building, Kansas City.



THE TWENTIETH CENTURY FARMER

is the Leading Agricultural Journal of the west. Its columns are
filled with the best thought of the day in matters pertaining to
the farm, the ranch and the orchard, and it is a factor in the
development of the great western country.

VIEW TAKEN BY WALL STREET

Divorcement of Pacific Roads May
Be Far Reaching in Results.

DISPOSITION OF STOCK SHARES

Predicted that Concessions of
Freight Requiring Quick Serv-
ice Will Still Go by Way
of Omaha.

"What does it mean to the stockhold-
ers" is a question regarding the supreme
court's Union-Southern Pacific decision
which more courts may be called upon to
decide. Fundamentally there can be
no certainty until the court has approved
some plan of dissolution. Assuming that
the railroads will suggest and the court
approve such dissolution as was had in
the Standard Oil and American Tobacco
cases, providing for pro rata distribution
of Southern Pacific stock among Union
Pacific stockholders, there is still a Gor-
dian knot to cut, says the Wall Street
Journal.

Under the Union Pacific charter the
preferred stock is preferred as to divi-
dends not to exceed 4 per cent, but "is
entitled to no other or further share of
the profits." Union Pacific directors
have repeatedly declared that in the
contingency of any distribution of in-
vestment assets the rights of the pre-
ferred stock to share in the distribution
would undoubtedly have to be determined
by the courts.

Union Pacific's holdings of Southern Pa-
cific stock amounted at time of the last
statement to \$18,000,000. There is now
outstanding \$18,000,000 Union Pacific com-
mon stock, \$3,780,000 bonds convertible
into Union Pacific common stock at 115,
and \$90,547,410 Union Pacific preferred
stock. Allowing for conversion of the
bonds, the distribution of the 1,300,000
shares of Southern Pacific among the
then 2,376,068 shares of Union Pacific com-
mon stock only would yield 55.33 per cent
of a share of Southern Pacific to every
share of Union Pacific common.

Distribution of Stock.
If it is decided that the Union Pacific
preferred is to have share for share rights
with the common stock in any distribu-
tion, the 1,300,000 shares of Southern Pa-
cific would be distributed among 1,371,832
shares of Union Pacific common and
preferred or 1/4 of a share of Southern
Pacific to every share of Union Pacific
of either class.

At the present market around 110 for
Southern Pacific, were the distribution
confined to Union Pacific common shares,
the 53.33 per cent of a share of Southern
Pacific would be equivalent to a cash
dividend of about \$68 on Union Pacific
common shares. If the preferred shared
equally the distribution would be equal to
a cash distribution of about \$41 per share
on Union Pacific common and preferred.

There is little doubt that Union Pacific
will ask to be allowed to purchase from
the Southern Pacific the control of the
Central Pacific, running from Ogden,
Union Pacific's western terminus, to San
Francisco. It is possible, but not probable,
that before distributing its Southern Pa-
cific stock Union Pacific may dispose of
part of it in the purchase of the Central
Pacific. The more likely procedure would
be for Union Pacific to issue bonds with
Central Pacific stock as collateral, the
Southern Pacific retiring its Central Pa-
cific collateral. However, whether the
purchase of Central Pacific by Union Pa-
cific would affect the distribution of
Southern Pacific stock is obviously an
open question.

One thing is certain, Union Pacific's
investment income will be curtailed about
\$7,000,000 a year by loss of dividends on its
Southern Pacific stock if the latter is
distributed, reducing surplus for dividends
on Union Pacific common over 3 per cent
annually. If the Southern Pacific stock
should be sold en bloc and the proceeds
reinvested in the property or otherwise
it might be some time before the income
would equal that heretofore received on
the Southern Pacific stock, which now
yields about 6.45 per cent on the market
value.

Effect Upon Earnings.
How the earning power of the Union
and Southern Pacifics will be affected is
likewise a matter involving uncertain
factors. If Union Pacific secures Central
Pacific and so links through to San
Francisco, it should still be able to draw
the major part of the traffic gathered in
California and along the coast by the
Southern Pacific. With its line from San
Francisco to Omaha, which will soon be
double-tracked throughout, it should for
some years command a position as pre-
ferred connection of the Southern Pacific
by virtue of offering the most adequate
service and ability to turn over most
westbound traffic in return.

How much business might be shifted
from the Central-Union Pacific route to
the Southern Pacific through route via
New Orleans would likewise be largely
determined by the question of service
and traffic relations. It has been the
declared policy of the Union-Southern
Pacific management to route traffic via
natural channels. Tonnage available for
either route, not expedited and permit-
ting of transfer from trains to boats, has
gone via the New Orleans route, while
comparatively requiring quick service
have gone via Omaha. Shippers will
naturally continue to select much the
same routing because the reasons will
continue the same.

Naturally Southern Pacific under
independent management will choose to
send by its 100 per cent route, the route
over which it gets the whole 100 per cent
of the transcontinental rate, all the
traffic it can, especially if it loses the
Central Pacific. It is only a question as
to how much more of the traffic it origi-
nates Southern Pacific can induce to
take the slower rail-water haul than has
gone that way heretofore. It is reason-
able to suppose that such traffic as can
take the longer route would largely have
been lost to Union Pacific in any event
with the opening of the Panama canal.
It seems reasonable to predict also that
what Southern Pacific gains in traffic
heretofore will be gained rather from de-
velopment of its territory than by draw-
ing from Union Pacific.

DESTITUTE FAMILY IS IN NEED OF A COOK STOVE

The Associated Charities is asking for
the donation of a cook stove for an As-
syrian family of nine who are now cook-
ing on a broken, obsolete stove. The
family lives in the southern part of the
city and is in straitened circumstances.

A SENSATIONAL ROCKER BARGAIN

Well worth \$8.00

for Saturday only . . .

SPECIAL TERMS 50c CASH 50c MONTHLY

\$3.95

THIS HANDSOME SOLID COMFORT
ROCKER is massive in appearance and made of
specially selected hard wood, finished in a beau-
tifully rich grain and American quarter-sawn oak.
Brilliantly polished with deep spring seat and up-
holstered in a high grade of guaranteed Imperial
leather. Back is high and wide, beautifully carved
with part tufted and part plain cushions. The seat
is large and roomy, upholstered over a full set
of steel springs and has beautiful ruffled front
edge. The arms are wide and front posts are of
handsome design and beautifully carved. A most
acceptable Christmas gift. On sale for Saturday only



FOR
SATURDAY
ONLY
ONE TO
EACH
CUSTOMER



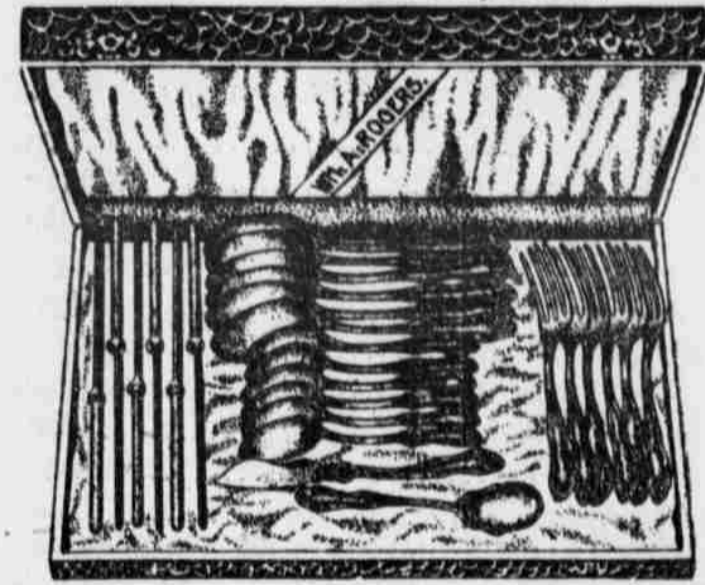
WONDERFUL
BLACKBOARD
SPECIAL
ONLY
19c

Only One to Each
Customer—No Phone
or Mail Orders Filled

THIS WONDERFUL SALE
special at the low price men-
tioned cannot be duplicated
elsewhere. The boards are 38
inches high and 18 inches
wide; substantially made of heavy
wood frames. Can be used on either
side. A wonderful gift for the little
ones. Only 750 of them—
As long as the quantity
lasts at only **19c**

Wm. A. Rogers
Guaranteed 26
Piece Silver Set

Vineyard Pattern—French Gray Finish.



ENTIRE 26 PIECES—PUT UP IN A TWO-SECTION LEA-
therette lined box—An absolutely guaranteed silver set. The
26 pieces consists of 6 knives, 6 forks, 6 tea spoons, 6 table
spoons, 1 sugar shell and 1 butter knife. All
finished in the newest French gray and of vine-
yard pattern for tomorrow only at the low price **\$7.50**

TERMS \$1.00 CASH 25c WEEKLY

Collapsible Doll
Go Carts—A
\$2.00 Value
Now Only **98c**



NO
PHONE
OR
MAIL
ORDERS

THESE CARTS STAND 26 INCHES
high, fold completely with one mo-
tion, hood and all, wheels are of steel
with heavy gears, upholstered in a
genuine Nantucket leather. Frames
are made of heavy, re-enforced
enamel steel with wood turn handles
—Made for the largest size doll—
One for each customer, at
the exceptional price—each **98c**
now at

HARTMAN'S

1414-1416-1418 DOUGLAS ST.

EGGS DECLINING IN PRICE

Cold Storage Houses Are Filled and
Hens Keep Laying.

CHRISTMAS TREES ARRIVING

Butter Stays Up to the High Mark
Placed the First of the Week
by the Butter Board at
Elgin, Ill.

Christmas trees, needle pines, holly
wreathing and other Christmas decora-
tions have come into the local market,
and soon will be on display at all the
stores. The H. C. of L. is not to be noted
in such holiday commodities. Christmas
trees will sell from 15 cents up, holly is
10 cents a pound, wreathing is 25 cents a
yard and needle pines are a quarter each.
Indications are the prices of Yuletide de-
corations will remain unchanged.

About the only table staple that went
down in price during the week is eggs,
which met a decline of 1 cent and are
now selling at 25 cents a dozen. Cold
storage houses are filled with them and
the output continues voluminous, so that
it is expected that they will not return
higher for awhile.

Butter still stands about at tip-toe reach
—42 cents a pound—in spite of the fact
that cheese, which is made from the same
materials, has declined in cost. The mar-
ket is overloaded with cheese and the
price is maintained at about half the
price of butter.

"Butterine and oleomargarine," grocers
say, "are becoming very popular with
the housewife." While the members of
the executive committee of the American
Association of Butter Manufacturers
who met in convention in Omaha the
other day declared that the packers with
their butterine are responsible for the
high cost of butter, grocers and butchers
assert that the effect is just the opposite.

Pancoast's Contest is Opened Before Referee H. S. Heller

Hearing in the contest brought by Ar-
thur C. Pancoast, republican candidate
for the legislature, who on the face of
the returns was defeated by forty-seven
votes by John H. Grossman, democrat,
was commenced before Referee W. R.
Heller yesterday morning.

Clyde C. Sunblad was the only witness
examined. No others being present, a
continuance until afternoon was ordered.
Sunblad testified relative to the election
in the second precinct of the Second
ward, where Henry Leavitt, attorney for
Pancoast, contends that there were ir-
regularities, caused by members of the
election board being intoxicated. In this
precinct Grossman won by eight votes.

Guy R. C. Read and George Bertrand,
attorneys for Grossman, on the other
hand, contend that the claims of Pan-
coast are without foundation, that the
members of the election board were at
no time during the count under the
influence of liquor, and that in this precinct
and in all others, each man received the
votes to which he was entitled, so far as
the count was concerned.

Shapiro and Kaplan Air Their Troubles

Because Michael Shapiro rebuked Al-
bert Kaplan, proprietor of the Misouri
Pacific hotel, he was attacked by Kap-
lan, who drew a large knife. Shapiro took
the weapon away from Kaplan and gave
him a sound trouncing. Kaplan, who sus-
tained several fractures ribs and a badly
disfigured countenance, and is just able
to be around, swore out a complaint
against Shapiro charging him with as-
sault and battery.

He swore out another complaint charg-
ing Shapiro with petit larceny. Shapiro
took the knife away from Kaplan during
the fight and has been holding it as
evidence. In the larceny complaint Kap-
lan charges his adversary with stealing the
knife.

The case was aired before Police Mag-
istrate Foster and he discharged the de-
fendant. The assault and battery case will
be tried in police court next Tuesday.

Persistent Advertising is the Road to
Big Returns.

RED CROSS SEALS SELL FAST

Nebraska Allotment Exhausted and
More Are Being Ordered.

BUSINESS MEN PUSHING SALES

It is Intention of Local Workers to
Realize \$2,500, Which Will Be
Turned Over to Dispensary
in Jacobs Hall.

The supply of 750,000 Red Cross seals
sent to Mrs. K. R. J. Edholm to be sold
in Nebraska has been exhausted and Mrs.
Edholm has wired to Washington for an
additional 50,000.

Five hundred dollars' worth of these
stamps have been sent to the superin-
tendents and principals of all the public
schools of Nebraska to be distributed
among the teachers, who are requested
to sell them to the scholars.

Many of the larger retailers and whole-
salers in Omaha have ordered stamps
from Mrs. Edholm, to be placed on their
monthly statements which will be sent
out the first of January.

Among others who have asked for these
stamps is Charles Courtney, who has con-
tracted for \$50 worth.

Flour Company Generous.
It is the intention and desire of the

local workers to sell at least \$2,500 worth
of stamps in Omaha, and this amount
will be turned over to the city dispensary
in Jacobs Memorial hall. The John Deere
Flour company, in addition to taking
1,500 stamps, has asked Mrs. Edholm to
notify them if the entire \$2,500 is not
raised and they will make up the needed
amount.

The Nebraska Graduate nurses have
contracted to sell at least \$1,000 worth
of seals. This money will also be turned
over to the local dispensary. The nurses
last year sold almost \$800 worth of the
stickers and are of the belief that they
can easily sell \$1,000 worth this year.

SCHOOL CHILDREN TO HAVE LONG HOLIDAY VACATION

City schools will close for the Christ-
mas holidays Friday, December 20, and
reopen Monday, January 6. Teachers will
be paid for the month of December be-
fore the vacation, in addition to taking
the holidays out of the city. School chil-
dren are planning their holiday program,
which will be given Friday, December 20.

A Break for Liberty
from stomach, liver and kidney trouble
is made when a 25c box of Dr. King's
New Life Pills is bought. Why suffer?
For sale by Beaton Drug Co.—Advertiser's
ment.

Suits To Order, \$18.00

Reduced From \$25

STOCK REDUCING SALE

\$30.00 Suits and Overcoats made to order for \$22.50

\$35.00 Suits and Overcoats made to order for \$27.50

\$40.00 Suits and Overcoats made to order for \$30.00

These are bright, new up-to-date patterns and are of
fine all wool quality. We use good linings and trimmings
and guarantee every garment perfect in fit and style.

MacCarthy-Wilson Tailoring Co.

304-306 South Sixteenth Street