

Big Sale Women's Cloaks, Page 4

BRANDEIS STORES

Great Sale Men's Overcoats Page 12

MODERATELY PRICED ARE OUR NEW NOVEMBER IMPORTATIONS IN

Women's Kid Gloves

Long French Kid Gloves—16-button length with 3 radium clasps, in all sizes—fitted to the hand—worth \$3.50, at pair **\$2.75**

Short French Kid and Lamb-skin Gloves—2-clasp effects with heavily embroidered backs or single row stitchings—all the newest shades including black and white; fitted to the hand, pair **\$1.25, \$1.50**

Bargain Square Special—12 and 16-button length gloves, in white, black and tan, with 3 Cleopatra buttons or clasps—actually worth \$3.00 a pair—all sizes, at pair **\$1.98**

2-clasp Short Kid Gloves—in white, tan, brown, grey and black, single row embroidery—worth \$1 a pair—all sizes, on bargain square at, pair **69c**



SIX BIG SATURDAY SPECIALS IN

Warm Knit Underwear

Women's Fleecy lined Union Suits in medium and heavy weights—high and low necks, long sleeves and sleeveless, ankle length—regular and extra sizes—worth up to \$1, special, at a suit **69c**

Women's Ribbed Fleecy Lined Cotton Union Suits—High neck, long sleeves and ankle length—worth to 75c, at a suit **59c**

Women's Heavy Fleeced Cotton Vests—Long sleeves; also ankle length pants to match—regular and extra sizes—50c quality, at a garment **39c**

Misses', Children's and Boys' Union Suits—Medium and heavy fleeced, all sizes to 16 years, at a suit **39c-50c**

Misses and Children's part wool vests and pants in natural color, worth up to 75c, at garment **35c**

50c infant's wool vests, silk crochet trimmed, sizes 3 months to 2 years, at each **25c**

Women's Hosiery Specially Priced

Women's Cotton and Mercerized Lisle Thread Hosiery—Heavy and medium weights, wide hem tops, plain and embroidered boot patterns, double soles, high spliced heels and toes—black, tan and fancy shades, worth up to 50c, at pair **25c**

Women's mercerized and dull finished lisle thread hosiery; also pure thread silk boot hosiery with wide lisle garter tops, lisle double soles, high spliced heels—black, white and tan—worth 50c, at a pair **35c**

Women's Cotton, mercerized, lisle finished, plain ribbed wool and fleecy lined hosiery—double soles, high spliced heels and toes—worth 25c, at the pair **15c**

Misses', Boys' and Children's Fine and heavy ribbed school hosiery—Cotton and lisle finish; also wool and fleecy lined, at pair **15c**

Infants' Pure Cashmere Wool Ribbed Hosiery—Silk heels and toes—(fast colors)—worth 25c, will go on sale at, pair **15c**

\$1.00 Women's Neckwear, 50c

New Queen Ann collars, Robespierre collars in black and colored silk and satin with dainty lace jabots, collars and coat sets, Dutch sailor and Capshon collars in crochet and Venise effects, fancy lace and net chemisettes, yokes, etc—worth up to \$1, at each **50c**

LINEN HANDKERCHIEFS AT HALF PRICE.

Women's and Men's fine embroidered initial pure Irish linen handkerchiefs; also fine cross barred lawn with hand embroidered corners, scalloped or val lace borders and plain hemstitched Irish linen—worth up to 25c, at each **12c**

Net and Shadow Lace Pleatings. Exquisite designs in white, cream, ecru and black—2 very special lots—**25c-39c** at the yard.

Women's Fine Dress Shoes

Patent kid vamps, with cloth or dull kid tops, in button and straight lace styles—with all the new, narrow, broad, receding and broad, full toes—exclusive styles from the best makers in this country, in all sizes and widths, per pair **\$4.95**

WOMEN'S TAN CALFSKIN SHOES—Smart, comfortable lasts with broad, full toes, in button styles with Goodyear welted soles in all sizes, at per pair **\$2.75**

SWEETLAND CANDY SPECIALS.

Cocoanut Kisses—assorted flavors, at lb. **15c**
Pompeian Chocolate Bitter Sweet and Swiss Milk Chocolates with crushed fruit and nut centers, at lb. **29c**
Complete Line Thanksgiving Novelties. Turkey—At each **5c, 10c, 15c and 25c**
Turkey Roasts—At each **5c, 10c, 15c and 25c**
Delicious Chocolate dipped Caramels, at per pound **19c**

Beautiful Chrysanthemums, at **10** Fresh Cut Carnations, at doz. **39c**

SALE OF CUT FLOWERS.

BRANDEIS STORES

Greatest Clothing Bargains in Town

GUARANTEE CLOTHING CO.

1519-21 DOUGLAS ST.

Granert & Rothschild and Irving Isador & Co. Entire Surplus Stocks SUITS and OVERCOATS On Sale Saturday

AN OPPORTUNITY to buy a strictly hand tailored suit or overcoat at LESS THAN COST OF MANUFACTURE. BEAR IN MIND that this is a sale of bright and fresh merchandise made up for this season's selling. WITHOUT A DOUBT THE GREATEST VALUE GIVING EVENT IN THE MERCHANDISING HISTORY OF OMAHA.

Made to sell at \$14.00, **\$8** Made to sell at \$16.50, **\$10** Made to sell at \$20.00, **\$12** Made to sell at \$22.50, **\$15**

\$4.00 and \$5.00 PANTS \$3.50 **\$3.50 and \$3.00 PANTS \$2.50**

COTTAGE for RENT

715 South 17th Street. Apply **RINGWALT BROS.** Brandeis Theater Bldg.

DRUGS OF MERIT AT CROWD BRINGING PRICES

The confidence that the customers of the Rexall Drug Stores have in us and in our methods of conducting our business is one of our chief assets.

Our constant aim is to deserve your trade by promoting the efficiency of our stores, insuring you safety, and strictly guarding the quality of our goods, as well as maintaining the lowest of cut prices. That this policy has proven successful is shown by our steady increase in business and by the thousands of satisfied customers who regularly make our shops their drug store headquarters.

- Proprietary Medicines**
- \$1 Wine of Cardui for **89c**
 - Dr. Cooper's Medicine **45c, 89c**
 - \$1 Hostetter's Bitters **89c**
 - \$1 Squibb's Sarsaparilla **75c**
 - Osobolston **45c, 89c, 50c**
 - Rexall Orderlies **10c, 25c, 50c**
 - Scott's Emulsion **45c, 89c**
 - Vinol, always **81c**
 - Hay's Hair Health **45c, 89c**
 - Listerine **15c, 25c, 45c, 89c**
 - Rexall Kidney Cure **45c, 89c**
 - \$1 Lydia Pinkham Compound **89c**
 - Glycothymoline **85c, 45c, 89c**
 - Rexall 93 Hair Tonic **50c, 81c**
 - Fellow's Syrup for **89c, \$1.24**
 - Spruce Peppin Tablets **50c, 81c**
- CUT PRICE SPECIALS IN TOILET GOODS**
- Andrew's Tooth ache plugs, bad for toothache **10c**
 - 25c Packer's Tar Soap cut to **14c**
 - 25c Proflitia cut to **12c**
 - 25c Sanitol Tooth Paste, now **12c**
 - 25c Dr. Graves' Tooth Powder **12c**
 - Harmony Rose or Violet Toilet waters **75c, 50c, 25c**
 - 25c Babcock's Corytopsis **15c**
 - 50c Pompeian Massage Cream, **25c**
 - Ivory Soap, 3 cakes for **11c**
 - Rexall Cold Cream, **50c and 35c**
 - 50c Violet Cream, cut to **15c**
 - 25c Dr. Graves' Tooth Powder **12c**
 - 25c Bruglers' Taleum **6c**
 - 50c La Jeune Powder **39c**
 - \$1 Gray's Glycerine Tonic **89c**

- Shipment Just Arrived of Excelsior Springs, Mo., Mineral Water**
- Crystal Lithia Water, 5 gal. **89c**
 - Jug **50c**
 - Salt Sulphur Water, 5 gallon **89c**
 - Jug **50c**
 - Salt Sea Water, 5 gallon **89c**
 - Jug **50c**
 - Regent Water, case of 50 quarts **89c**
 - Sulpho-Saline Water, case of 50 quarts **89c**
 - Sulpho-Saline Water, case of 50 pints **89c**
 - Diamond Lithia Water, case of 12 1/2 gals. for **89c**
 - We handle 100 kinds of Mineral Waters, in all sizes. Free delivery to any part of the city.
- SPONGES**
- Our assortment of sponges is large and varied. We sell them at greatly reduced prices. Try the Russian rubber sponges, outwear 4 regular sponges—**25c, 50c, 80c, 75c, 85c and \$1.00**
- Sherman's Lavender Shampoo Cream and Bitter Apple Hair Tonic.** Thoroughly cleanses the scalp and keeps the head free from dandruff. See demonstration at 15th and Dodge Sts. Store. Bitter Apple Hair Tonic, **50c, 75c and \$1.50** per bottle. Lavender Shampoo Cream, **50c, 80c and \$1.00** jars.

SHERMAN & McCONNELL DRUG CO.

Proprietors of the Following Rexall Stores: SHERMAN & McCONNELL DRUG CO., 16th and Dodge; OWL DRUG CO., 16th and Harney Sts.; LOYAL PHARMACY, Loyal Hotel; HARVARD PHARMACY, 24th and Farnam Sts.

Style and Comfort in the Same Shoe

Here's a special value in a Tan Calf Shoe that will appeal to nearly every lady.

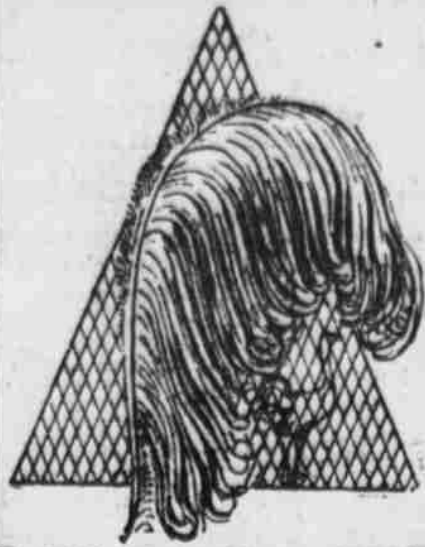
Just as shown in illustration. It's one of the newest for street wear—in a rich dark shade of tan calf, very soft and pliable. Cut extra high, with short vamp, and broad square-edged extension soles and Cuban heels. The price is **\$3.50**

FRY SHOE CO.

16TH & DOUGLAS.

You may miss something if you don't read the want ads TODAY.

THE TWENTIETH CENTURY FARMER is the Leading Agricultural Journal of the west. Its columns are filled with the best thought of the day in matters pertaining to the farm, the ranch and the orchard, and it is a factor in the development of the great western country.



33 1/2 Per Cent Off ON ALL OUR Willow Plumes and Birds of Paradise. SATURDAY ONLY

\$4.00 Willow Plumes, 18 inches long, 16 in. wide, **\$3.45**
\$7.50 Willow Plumes, 20 inches long, 18 inches wide, **\$4.75**
\$12.50 Willow Plumes, 22 inches long, 22 inches wide, **\$7.95**
\$15.00 Willow Plumes, 25 inches long, 24 inches wide, **\$9.95**

A beautiful assortment of Ostrich Bands and Feather Novelties at half price. Values from \$2 to \$5, on sale Saturday to **\$1 \$2.50**
One-third off on all Bird of Paradise.
GOLDBERG'S PLUME STORE
603 South 16th Street (City Nat'l. Bank Bldg.)

Boys

Shoes, ordinarily do not wear if they are ordinary Boys' shoes. But if they are

STEEL SHOD SHOES

the boy cannot wear them out. We guarantee them to outwear two pairs of ordinary Boys' shoes. Sizes 1 to 5 1/2, **\$2.50** Sizes 10 to 13 1/2, at **\$2.00**

BOYS' HIGH CUTS
The kind with Buckles. A real shoe for the winter boy. **\$2.50 to \$4.50**
DREXEL
1419 Farnam.

Hats! Hats! Hats!

We have just purchased an extraordinary stock of high grade millinery, and owing to the fact that we bought at a price far below cost to manufacture, we will place all on sale Saturday in two lots—

Exquisitely trimmed hats, some with ostrich feather trimmings, regular \$10 & \$12 values, special Saturday only at **\$1.00**
Just think of it—magnificently trimmed velvet hats, values up to \$18, on special sale—**\$1.98** Saturday only at **\$1.98**

Mrs. S. Richards
219 City Nat'l. Bank Bldg. Second Floor.

This Coupon and good for the next number of ALL the following magazines: **20c**
Sweet Magazine, McClure's Magazine, The Ladies' World, National Geographic Magazine, Address Magazine, Coupon Dept. Twentieth Century Farmer, Omaha, Neb.

THE OMAHA BEE
Omaha's Great Family Paper.

SPECIAL REDUCTIONS ON STRICTLY MAN-TAILORED SUITS AND COATS SATURDAY

All Coats that sell regularly up to \$25.00 on sale Saturday at **\$14.50**
All Coats that sell regularly up to \$35.00 on sale Saturday at **\$19.50**

Exquisite man-tailored suits—values up to \$25, on sale Saturday **\$19.50**
Stylish, strictly man-tailored suits—values up to \$35, on sale Saturday **\$27.50**

Our styles are the latest, our prices are the lowest
Orlijans LADIES TAILORING
1619 Harney St., Boyd Theater Bldg. Alterations made free by man tailors

Formal Opening THE State Bank of Omaha

Corner 17th and Harney Streets

We request your presence at the formal opening of the new State Bank, Saturday, November 16th, from 9 A. M. to 9 P. M.

You are also invited to open an account with us, large or small.

OUR GUARANTEE TO YOU
Capital - - - - - **\$300,000.00**
Surplus and Profits - - **\$25,500.00**

Deposits are protected by the Depositors' Guarantee fund of the State of Nebraska.

4% paid on Time Deposits.
3% paid on Savings Accounts.
Commercial and Savings Accounts solicited.

OFFICERS
Albert F. Schantz, President; J. L. Svoboda, Cashier;
Albert S. White, Vice President; F. N. High, Ass't. Cashier.

Saturday is your greatest opportunity



for sewing machine bargains offered in many years. A big special purchase of fine new ball bearing machines, all drop head and guaranteed. Will be placed on sale Saturday at less than factory cost.

USED MACHINES
Two Singer machines, 5 drawer, drop head—**\$11.00 and \$15.00**
Improved Windsor, drop head, on sale, at **\$9.00**

New American, oak case, at **\$14.25**
Cleveland machine, automatic shift, at **\$21.50**
Duplex Cabinet in golden oak case, **\$24.50**
Eldridge, oak case, **\$15**
Economy machine, oak case, at **\$15.50**
Eldridge Rotary, a beauty, at **\$26.00**

We arrange payments to suit your convenience.

HAYDEN BROS.

1417 DOUGLAS ST. Successors to Ridgley Clothing Company.

1417 DOUGLAS ST. Successors to Ridgley Clothing Company.

Complete Out-fitters for Men and Women

Elmer Beddes
OMAHA'S ORIGINAL
\$1 A WEEK
CREDIT CLOTHING MAN

Omaha's Oldest and Best Credit Clothing Store