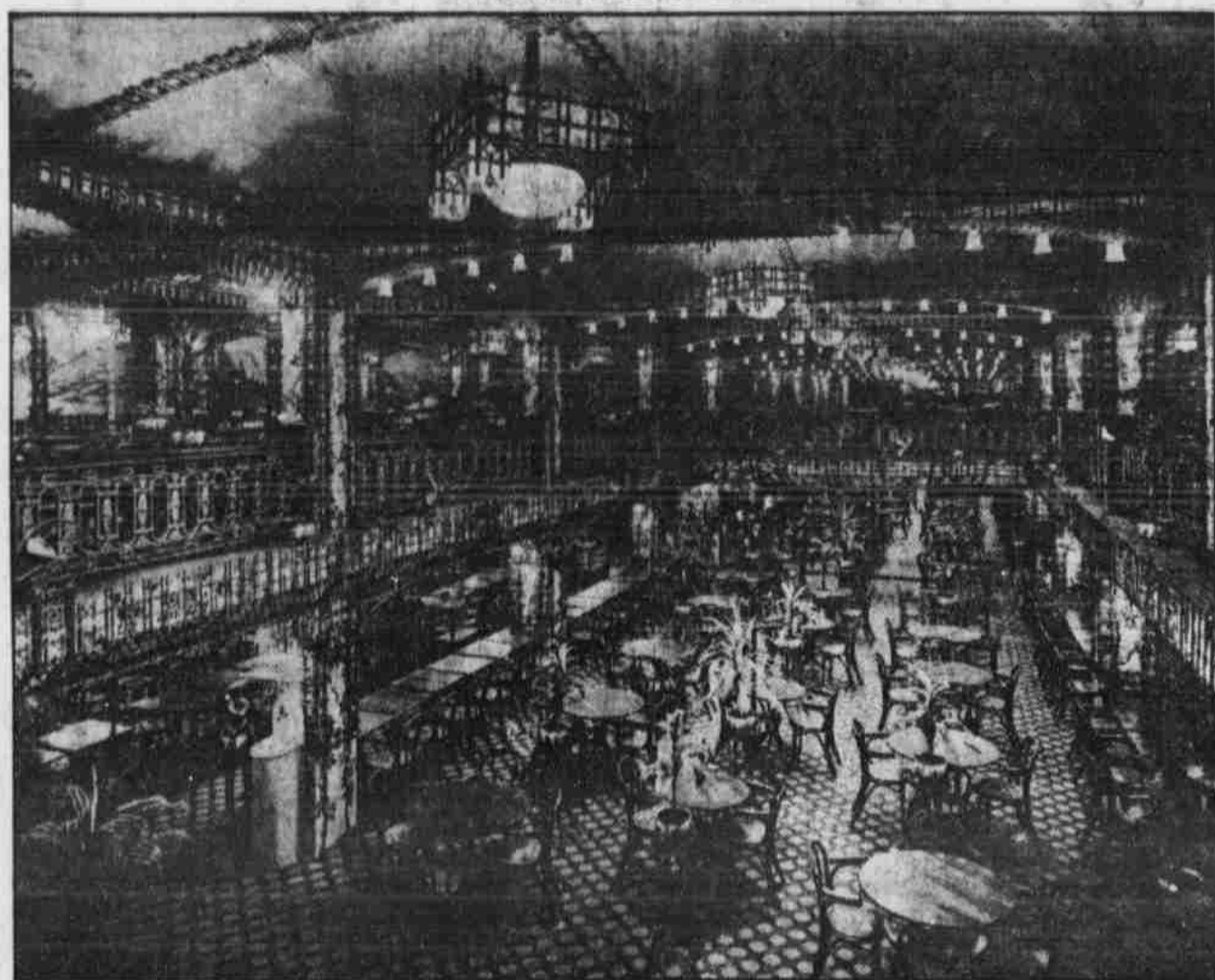


EMPRESS GARDEN

CAFE & DELICATESSEN

Interior View of the New Beautiful Empress Garden



Gilinsky Fruit Co.

1017 Howard Street.
Phone D. 762.

WHOLESALE JOBBERS OF

Domestic and Imported
Fruits and Vegetables

HEADQUARTERS FOR

"SUNKIST"

Oranges and Lemons

Empress Garden

Family Restaurant

Try Our Table d'Hote

11 A.M. to 2 P.M. | 5 P.M. to 8 P.M.

Lunch **35c** | Dinner **50c**

Buffet Luncheon, 25c

After Theater, 8 P.M. to 11:30 P.M.

Hot and Cold "Specials"

Oysters, Broiled and Boiled Lobsters.
Welsh Rarebits, Broiled Spring Chicken.
Macaroni, Au Gratin, Spaghetti, Italiane.
Salads, Sandwiches, Cold Meat.
Ice Cream, Complete Soda Fountain Service, Pastries.

Continuous Entertainment

POPULAR PRICES ALWAYS

The Brandeis Stores

OMAHA'S SHOPPING HEADQUARTERS

Furnished all the

Table Linens,
Draperies and
Linoleums

For the New
Empress Garden

Large Crowds Are Daily Thronging Empress Garden

In the ten days since the Empress Garden has been open to the public upwards of 15,000 people have dined within its luxurious surroundings and the stamp of approval has gone out broadcast from the lips of these first patrons. Invariably remarks of wonderment at the beauty of the place and the quality of the food have been heard from those who have paid but small prices for the highest standard of food and service at this unique establishment.

Those who have doubted the success of this vast enterprise, in which a fortune has been invested, need but note the large crowds which are daily filling it to capacity and the attendant satisfaction of each patron and such doubt would quickly vanish. It is true that changes are being made almost daily in the plan of operation, but with each new move there is improvement, and the service will continue to be bettered until there is no longer room for increased efficiency.

The complete soda fountain and delicatessen service, in meeting with much favor and after-theater parties are being well taken care of in this way. Business men are finding the Empress garden an ideal place to take their noonday lunch, for with the good quality of food and quick service there is pleasing entertain-

DIRECTOR OF CONSTRUCTION OF EMPRESS GARDEN.



O.D.M. Cord

ment which tends to rest the mind and aids digestion. Many lady shoppers are availing themselves of the delicious lunches put up for them here at popular prices.

A table d'hote dinner is being served in

the evening at the Empress which is being largely patronized by family parties, the presence of children adding greatly to the general gaiety of the cafe. The youngsters seem to enjoy the luxury and beauty of the place as much as the grown folks and as heartily appreciate the music and entertainment. Especially do they relish the French pastry which is being served with these meals, a feature, by the way, which is adding greatly to the popularity of the Garden.

The greatest drawing power upon which the owners of this exquisite dining place depend are the popular prices charged for everything sold, from the cafe prices to the minutest item in the delicatessen department. The soda fountain also makes exceptionally good drinks and dishes for a price which is about 25 per cent below the usual charge. The quality of these, moreover, is exceptional and the flavor delicious.

The credit for the design of the Empress garden belongs to the H. L. Stevens company of Chicago, which concern also was the contracting engineer for the Empress theater and for other theatrical enterprises of the standard Amusement company. For the successful execution of the plans designed by the Stevens company credit must be given to O. D. McCord, the young superintendent of construction, who was sent here by that company. For many months Mr. McCord labored untiringly until the last detail of construction was completed and the judgment displayed by him in the solving of difficult emergencies is deserving of much praise.

Brilliant Electrical Illumination at the Empress Garden One of the Most Attractive Features

The great scheme of beauty at this newest Omaha Cafe could scarcely have been conceived or executed were it not for the aid of the electric light. The attractive lighting fixtures with their rich lattice work and garden effect could not have been worked out had the artists not depended upon the modern benefactor—the electric light.

In Omaha, as in other large cities where elaborate effects have been desired in beautiful public and private show places the electric light has been indispensable. In fact it would be difficult to conceive any modern establishment that could do without electric light.

Those who have been at the Empress Garden have marveled at the luxurious aspect of the entire surroundings. The decorations and appointments are unquestionably superior to any yet seen in this section of the country. But above all the lighting effects, made possible by the electric light, stands out as the greatest single feature of the entire array.

Moreover electricity plays an important part in other respects at the Empress Garden. The manifold duties of the electric motors which have been installed there are no small part in its successful operation. The electric fans, the electric dish-washing machines, the electric blower machines, the inter-communicational electrical power.

"Do It Electrically"
was the slogan.

Hospe's
Automatic
Band and
Pneumatic
Pianos are the
Musical
Attractions
at the
Empress
Garden

A. Hospe Co.
Everything
in Art and Music
1513 Douglas St.
Omaha

H. L.
Stevens & Co.

CHICAGO

Architects and
Engineers

of the

EMPRESS GARDEN
& EMPRESS THEATER

INSURANCE FOR THE EMPRESS GARDEN

written by

FOSTER-BARKER COMPANY

Brandeis Building—Douglas 29