

LIEF'S VIKING SHIP

FLOATING WITH THE CARAVELS OF COLUMBUS.

The Rival for the Honor of the Discovery of America Immortalized by Ugly Looking Ships at the World's Fair.



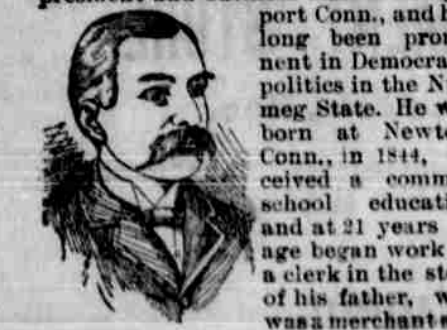
THE WORLD'S Fair has been made more attractive by the presence on Lake Michigan of a real Viking ship, fully manned, a picture of which is given herewith.



WITH A STURDY CREW. she and her tug were caught in the ice. For two days her crew fought through the freezing cold, and at last saved her from wreck.

THE U. S. TREASURER.

Sketch of Daniel N. Morgan, Recently Honored by Mr. Cleveland.



DANIEL N. MORGAN, bank president before him. He was associated as partner with various large business houses in Bridgeport up to 1879, when he became president of the City National bank.

They Wanted Money.

A paragraph has been the round of the papers to the effect that several wealthy residents of Florence have offered to place their villas at the disposal of Queen Victoria for the summer.

A Prison Romance.

A bridegroom in chains was recently married in St. Petersburg. Alexander Petrovitch had been tried for murder and sentenced to death; but the sentence was afterward commuted to ten years' banishment to Siberia.

WASHINGTON'S SWORD.

The relic of the Revolution on Exhibition in Chicago. The sword which George Washington wore when he surrendered his commission as chief of the American forces Dec. 23, 1783, is at the World's Fair.



MISS LEWIS \$20,000 for the sword. For some reason it did not come up on the calendar, as it was at the close of the term.

A Remarkable Surgical Feat.

A medical correspondent sends to a contemporary an account of a remarkable operation recently performed in one of the largest London hospitals and which had a very successful result.

Our Minister to Japan.

Edwin Dun, the new Minister to Japan, is a native of London, Ohio, and is about 43 years old.



TOKIO over since his appointment during the first administration of Mr. Cleveland.

A Football Gate Record.

That the tremendous interest felt in football shows no abatement is clearly proved by the fact that 451,500 persons paid for admission to witness the thirty-seven games (including the six replayed ties) in the second and concluding stages of the English Association Cup Competition.

Steamship Travel Safe.

In 1892 there were 650 million passengers by steamship, of whom 240 people were lost, or one in every 2,708.

THE DOUBLE PLAN

of the Money Power to "Divide and Conquer" the Industrial Army.

WAR PREJUDICE TO BE REVIVED.

Chaplain Snyder Shows How the Money Power Will use the A. P. A. and the Southern Fire-eaters.

A Most Timely Warning.

EDITOR ALLIANCE-INDEPENDENT:— Yours of the 11th, at hand. Your editorial on the A. P. A. is to the point, but I think you only half state the case against the money power.

These will be hunted out by the money power and induced to bring in bills into congress, offer resolutions, make speeches, etc., that will alarm and fire up all the old soldiers of the north.

The south will be sold, and the democratic party will go for the Catholic vote by putting themselves on record as opposed to the A. P. A. Protestants, especially in the north, will be urged to vote the republican ticket as the only safety.

I do not believe that the democratic party as a party will pass any laws against the old soldiers. But there will be hot-heads in the party that will get up a louder racket on pensions than Lodge ever effected by his force bill.

We need not flatter ourselves that the money power will die easily. It will do nothing of the kind. If it dies at all it will "die hard" as the saying goes.

The great reserve force that God will use to serve us in this "war of elements" is the educated "toller. Every farmer, every mechanic, every honest man and patriot who is well instructed in our principles is a conservative unit to help save the country in this struggle.

Now my alliance brethren, what a mistake you do make when you tire of work and let your alliance die out! There is our school of safety and sound policy. There is the patriot rallying post. Hold it fast, and call yourself a backslider patriot if our lot goes.

To Secretaries. Secretaries of labor organizations throughout the state, who have not as yet received the circular, etc., sent out by the Nebraska State Labor Congress, are requested to send their address to John B. Schupp, president N. S. L. C., 107 South Thirteenth st.

CHAUNCEY M. DEPEW.

The other day, in speaking of the improved facilities for luxurious travel in this country says: "We are abandoning the old system of lighting the cars with kerosene lamps, and more than half the coaches have already been equipped with the most improved and the safest system of lighting known in this country or Europe.

Farms for Sale.

160 acres 4 miles north of Alliance Box Butte county Neb. 70 acres in cultivation. 80 acres fenced, sod house and barn, two wells. Will give possession at once. Price \$80 per acre.

Goodhue Engine Co.

White beans, honey, sorgham molasses and butter and eggs to sell on commission. J. W. HARTLEY, State Agent.

Why? Why is Strictly Pure White Lead the best paint?

Because it will outlast all other paints, give a handsome finish, better protection to the wood, and the first cost will be less. If Barytes and other adulterants of white lead are "just as good" as Strictly Pure White Lead, why are all the adulterated white leads always branded Pure, or

"Strictly Pure White Lead?"

This Barytes is a heavy white powder (ground stone), having the appearance of white lead, worthless as a paint, costing only about a cent a pound, and is only used to cheapen the mixture. What shoddy is to cloth, Barytes is to paint. Be careful to use only old and standard brands of white lead.

"Southern Collier" "Red Seal"

are strictly pure, "Old Dutch" process brands, established by a lifetime of use. For colors use National Lead Co.'s Pure White Lead Tinting Colors with Strictly Pure White Lead.

NATIONAL LEAD CO.

1 Broadway, New York. St. Louis Branch, Clark Avenue and Tenth Street.

Nebraska Savings Bank

13 and O St., Lincoln. Capital \$250,000. GIVES ABSOLUTE SECURITY. Write Us and We will Prove it.

AGENTS WANTED—Male and female

A old and young, \$15.00 to \$25.00 per day easily made, selling our Queen Plating Outfit, and doing Gold, Silver, Copper and Brass Plating, that is warranted to wear for years, on every class of Metal, Tableware and Jewelry &c.

Queen City Silver & Nickel Plating Co.

East St. Louis, Ill. We Sell Direct to the Consumer AT WHOLESALE PRICES. House Paints, Barn, Roof and Bridge Paints. Buy direct from the factory. Guaranteed.

MANUFACTURERS OF



All Kinds of Galvanized Iron Cornices and Wire work, poultry netting, yard and garden fencing, window guards, office railing, etc. send for catalogue.

THE BOSS SPRAYER

For spraying fruit trees and vines. Send for catalogue and price list to CURTIS & HUBBELL, 1565 So. 26th St., Lincoln, Neb.

EAGLE BRAND THE BEST ROOFING

Is unequalled for House, Barn, Factory or Out-Buildings and costs but the price of shingles, tin or iron. It is ready for use, and easily applied by anyone. Send stamp for samples, and state size of roof. EXCELSIOR PAINT & ROOFING CO., 155 Duane st., New York, N. Y.

Farmer Agents in Nebraska For 1893.

The most complete line of wood and steel pumping and general mills and gears, mill machinery in use. Prices low and machines the most reliable and durable in use. Agents wanted for every kind of windmill this year, write now and secure the agency.

Goodhue Engine Co.

White beans, honey, sorgham molasses and butter and eggs to sell on commission. J. W. HARTLEY, State Agent.

PATENT SOLICITORS.

SUES & CO., See Bldg. OMAHA, NEB. Four year's experience as examiner in the U. S. Patent office. Advice free, no fee until the patent is obtained.

LAUNDRY SHIRTS MADE EASY.

With Orewiler's Spring and Ratchet Bosom Board. A shirt front is stretched by springs as tight as a drum head and as straight as a ribbon. While you are ironing the springs are pulling. No wrinkles nor crooked places possible. Full instructions for starching, polishing, etc. with each board. Sent by express on receipt of price, \$1.00. Agents wanted. E. OREWILER, Upper Sandusky, Ohio.

Adjustable

WARRANTED. Sold direct to school officers. Circulars free. Address, Adjustable School Seat Manf'g Co., MARCELLUS, MICH.

The Paragon Incubator

Is positively the most practical and reliable incubator now before the people of the West. "Patronize Home Industry" and get the best. We dare come before the people at the great Nebraska State Fair this year. We hatched 52 chicks from 121 fertile eggs, after all other incubators have failed. How difficult is reached and the cause removed fully explained in circulars, with affidavits and testimonials of cures from prominent when they were within two days of hatching. There being no premium offered at the fair we were granted the HIGHEST award of honor by the board of examiners. Send for circulars and price list of the incubator, which hatched the chicks at the state fair. Address

O. G. COLLIER,

Box 435, Fairbury, Neb. DEAFNESS, ITS CAUSES AND CURE.

Scientifically treated by an aurist of world-wide reputation. Deafness eradicated and entirely cured, of from 20 to 30 years standing, after all other treatments have failed. How the difficulty is reached and the cause removed fully explained in circulars, with affidavits and testimonials of cures from prominent people, mailed free.

ROOF Your Buildings WITH Black Seal Roofing

TOUGH and DURABLE as leather, FIREPROOF as asbestos, WATERPROOF as rubber, and at prices within the reach of every one. Put on by anybody and good in any climate.

PAINT ROYAL ROOF PAINT

In Red or Brown or with our glossy jet black, IMPERIAL ASPHALT PAINT, all fully guaranteed. Cheapest and best paint for metal and wood in use. Send for Pamphlet, Catalogue and Color Card to the manufacturers—W. E. CAMPE ROOFING & MFG CO., Kansas City, Mo.

MONEY MONOPOLY

(1st Edition of 5,000 all sold.) NEW EDITION—ENLARGED. 190 Pages Heavy Paper, Now Ready. Price, paper 25c; cloth \$1.00. Address THE ALLIANCE PUB. CO., Lincoln, Neb. "Money Monopoly" by E. R. Baker, is pronounced by representative leaders in the reform cause to be the most comprehensive work ever published on the money question. Every assertion backed up by undeniable proofs. Truly the "Gidding gun" of wage-slavery against plutocratic oppression." Iowa Tribune, Gen. Weaver's paper.

CHEAP FARM LANDS

100,000 Acres Just Put Upon the Market! SOLD ON Small Cash Payments AND 5 to 20 Years Time. NO TRADING. For map of Nebraska and further particulars, call on or address, STAPLETON LAND COMPANY, 444 BEE BUILDING, OMAHA, NEB.

FARMERS AND THRESHERMEN

All the latest improved machinery, such as: Horse Power, Mowers, Reapers, Harvesters, Grain Drills, etc. Fuel Saved. Traction, Plain or on Skids. 3,000 IN USE and never an accident. BUY HUBBER ENGINES. It will cost you a cent postal card to obtain full information about the best Traction Engine and Reap-harvester on earth. Address: A. M. MULLIN, Box 1374, Lincoln, Neb.

HOG CHOLERA CURED: FREE.

We will furnish medicine to cure ONE HERD OF SICK HOGS in each township in the United States FREE! Give names of office and number of hogs. A trial will cost you the express charges and a report of the result of using the medicine. Address THE W. M. HALL MEDICINE COMPANY, St. Louis, Mo. Mention this paper.

ST. JOSEPH BUGGY CO.

White Buggy Co. Carriages and Buggies at lowest prices. Catalogue and price list free. 6th and Mesquito Sts. St. Jos. Mo.

AMERICAN ROOFING CO.

Largest Manufacturers in the U. S. Sheet Iron Building Material. Bridges, Cellars, Roofings, Shelters, Ironing Brick or W. c. cladding, Gutters, Downspouts, etc. For a 2 per cent. discount, mention this paper. St. Louis. Cincinnati.

RIP-ANS TABLETS

REGULATE THE STOMACH, LIVER AND BOWELS AND PURIFY THE BLOOD.

RIP-ANS TABLETS are the best Medicine known for Indigestion, Bilemness, Headache, Constipation, Dyspepsia, Chronic Liver Troubles, Malaria, Bad Complexion, Dropsy, Gravel, Rheumatism, and all disorders of the Stomach, Liver and Bowels. Rip-ans Tablets contain nothing injurious to the most delicate constitution. Are pleasant to take, safe, effective, and give immediate relief. Price—Box (6 vials), 75 cents; Package (4 boxes), \$2.50. May be ordered through nearest druggist, or by mail. Sample free by mail. Address THE RIP-ANS CHEMICAL CO., 12 SPRUCE STREET, NEW YORK CITY.

KINGSLAND & DOUGLAS MFG. CO.

ST. LOUIS, MO. THRESHERS. Carried for best Tractor, Reaping and Mowing Engines. Traction Engines. Special in all points that go to make up a Perfect Pulling and Working Engine. Send for Catalogue.

PATRONIZE The Only Line Under One Management

Lincoln to Points Below. OAKES ABERDEEN HURON MITCHELL YANKTON WINONA MARSHALL KAROTA MARQUETTE WYOMING ST. PAUL FREMONT OMAHA LINCOLN SUPERIOR LINCOLN MINNEAPOLIS OMAHA WYOMING ST. PAUL SIOUX CITY HELDON DES MOINES MARSH L'WYN BOONE CLINTON MILWAUKEE OSKOSH SAU CLAIRE MADISON CHICAGO FREMONT AURORA ELGIN DIXON Fast Trains to Chicago and St. Paul. Close CONNECTIONS FOR ALL POINTS. BEST EQUIPMENTS—LOWEST RATES. A. S. FIELDING, W. M. SHIPMAN, City Trm. Agt. Gen'l. Office 1133 O St.—Depot Cor. 8 and 9th St., LINCOLN, NEB.

J. W. BERZAN.

Banners, Flags, BADGES, SIGNS & WRITE FOR CATALOGUE. 12th and Farnam Sts.

THE MAN

UNACQUAINTED WITH THE GEOGRAPHY OF THIS COUNTRY. MUCH VALUABLE INFORMATION FROM A STUDY OF THIS MAP OF

Chicago, Rock Island & Pacific Ry.

See Direct Route to and from CHICAGO, ROCK ISLAND, DAVENPORT, DES MOINES, COUNCIL BLUFFS, OMAHA, LINCOLN, WATERTOWN, SIOUX FALLS, MINNEAPOLIS, ST. PAUL, ST. LOUIS, WICHITA, LEAVENWORTH, KANSAS CITY, TOPEKA, DENVER, COLORADO SPRINGS, and PUEBLO. Free Reclining Chair Cars to and from CHICAGO, CALDWELL, HUTCHINSON and GORGE CITY, and Palace Sleeping Cars between CHICAGO, WICHITA and HUTCHINSON.

SOLID VESTIBULE EXPRESS TRAINS

Through Coaches, Sleepers, Free Reclining Chair Cars and Dining Cars daily between CHICAGO, JEFFERSON CITY, COUNCIL BLUFFS, OMAHA and LINCOLN, and between CHICAGO and DENVER, COLORADO SPRINGS and PUEBLO via St. Joseph, Kansas City and Topeka. Excursions daily, with choice of routes to and from Salt Lake, Portland, Los Angeles and San Francisco. The Direct Line to and from Pike's Peak, Manitou, Garden of the Gods, the Santitas, and scenic Grandview of Colorado.

Via The Albert Lea Route.

Fast Express Trains daily between Chicago and Minneapolis and St. Paul, with THROUGH Reclining Chair Cars FREE to and from those points and Kansas City. Through Chair Cars and sleeping cars to St. Joseph, Spirit Lake and Sioux Falls via Rock Island. The Favorite Line to Watertown, Sioux Falls, the summer resort and Hunting and Fishing grounds in the Northwest. For Tickets, Maps, Fold-out, or desired information, apply to any Traveling Agent, or address: E. ST. JOHN, JOHN SEBASTIAN, Gen'l. Managers, CHICAGO, ILL.

WEBER GAS AND GASOLINE ENGINE

Engines of all sizes and most economical engines on earth. Fully Guaranteed. A big start is required and few minutes' attention is all that is needed to get your engine going. Write for catalogue. Address: WEBER GAS AND GASOLINE ENGINE CO., KANSAS CITY, MO.

FARMERS SHIP YOUR GRAIN YOURSELVES

We obtain Highest Market Price monthly and make prompt returns. We have a fleet of grain elevators and elevators by mail, getting our grain to you as fast as you can load it. Insurance, handling, etc. upon arrival. N. H. CARR & CO., 10 Board of Trade Bldg. Chicago