

The prospects for the Lincoln Normal University grow brighter every hour. The electric street car, which now runs to the campus, brings students by the score. Profs. Saylor, Shelton, Lewis and other members of the faculty are busy classifying students, and classes were organized this morning, with an enrollment which surprises every one interested in the institution. Students are more than delighted with the handsome new building and elegant furniture. Work has begun in earnest and every one is interested in the future of this great institution.

Homes and Irrigated Farms, Gardens and Orchards in the Celebrated Bear River Valley on the Main Lines of the Union Pacific and Central Pacific R. R. near Corinne and Ogden, Utah.

Splendid location for business and industries of all kinds in the well known city of Corinne, situated in the middle of the valley on the Central Pacific R. R. The lands of the Bear River valley are now thrown open to settlement by the construction of the mammoth system of irrigation from the Bear lake and river, just completed by the Bear River Canal Co., at a cost of \$3,000,000. The company controls 100,000 acres of these fine lands and owns many lots and business locations in the city of Corinne, and is now prepared to sell on easy terms to settlers and colonies. The climate, soil, and irrigating facilities are pronounced unsurpassed by competent judges who declare the valley to be the Paradise of the Farmer, Fruit Grower and Stock Raiser. Nice social surroundings, good schools and churches at Corinne City, and Home Markets exist for every kind of farm and garden produce in the neighboring cities of Ogden and Salt Lake, and in the great mining camps. Lands will be shown from the local office of the Company at Corinne. 15tf

**AUCTIONEERS.**

**F. M. WOODS,**  
Fine Stock Auctioneer, Lincoln, Neb.

Refer you to the best breeders in the west, for whom I do business. Prices reasonable and correspondence promptly and cheerfully answered.

PURE BRED POULTRY. White Plymouth Rock. White Games Partridge Cochins; Toulouse Geese, White Holland Turkeys, White Guineas, Pekin Ducks. Eggs in season. Prices low.  
W. A. BATES, JR.,  
Fremont, Neb. 36tf



**FOR SALE.**  
Long deep bodied  
**U.S.P.C.**  
**PIGS.**

Good color, short legs, broad back, good feet and head. Alliance prices, satisfaction guaranteed 13tf

**BISCHEL BROS.** Kearney, Neb.

**Furnas Co. Herd,**  
**BIG BERKS.**  
BEAVER CITY, - NEB.  
Thoroughbreds exclusively. All ages, either sex. Sows bred. Stock guaranteed as represented. Prices right. Mention this paper.  
H. S. WILLIAMSON, Prop'r.

**J. M. ROBINSON,**  
KENESAW, ADAMS CO., NEB.

Breeder and shipper of recorded Poland China Hogs. Choice breeding stock for sale. Write for wants. Mention ALLIANCE.



**L. H. SUTER**  
Neligh, Neb.

Breeder of fancy Poland China swine and P. R. fowls. Majority of pigs sired by Free Trades Best, remainder by Paddy's Chip and Lyles Dandy. Free Trades Best is sired by Free Trade, the great show hog that was sold for \$800, being the highest priced hog in existence. Had a full sister to Free Trade in my herd for 3 years and have many fine sows from her.  
L. H. SUTER.

**MEETINGS.**

The following is a list of the meetings arranged for Lancaster county:  
October 10 Yankee Hill, Bowers school house  
" Melick's school house, Rock Creek  
" 11 Stockton Pre. School H. No. 10  
" 2d ward 1st and J St, S. H.  
" 12 West Lincoln.  
" Roc.  
" 13 Bennett.  
" Lancaster Precinct.  
" 14 Waverly.  
" Pella, Panama Precinct.  
" 15 Sprague.  
" Mill Precinct, Cedar Hill S. H.  
" Emerald.

**Romine's Appointments**  
IN DODGE COUNTY.

Ruff School House, October 20.  
Glencoe, October 20.  
Webster, October 21.  
Nickeson, October 22.

**The B. & M. and Its Employees.**

A man who knows sends us the following to show how the B. & M. company deals with the men who are expected to walk to the polls and vote for its tools on election day. It won't be so when we get government ownership of railroads:

There are a large number of men employed at the Burlington's Lincoln freight house, and their work, consisting of hauling heavy freight on trucks, is very hard even if followed only ten hours a day and in cool weather. But to be compelled to put in eleven to twelve hours a day as these men have to every day and every now and then part or all of Sunday, and sometimes with the mercury at 100, it is almost more than the boys can endure. Several of them have been so overworked within the past ten days that they have had to quit.

There might be some excuse for this state of things if the boys were inclined to shirk, but there is not a better crew to be found in the state than the B. & M. freight hands. Many of them are fit to occupy much higher positions.

The boys would cheerfully bear all this, knowing that the work has to be done, if they were treated as men should be, but they are not. It seems to be the study of the B. & M. to make things disagreeable for the men. If this was the object they have succeeded in the highest degree. Their foreman at the freight house is a man fitted to carry out their wishes to the letter. If Mrs. Stowe were to write Uncle Tom's Cabin again she would certainly come to the corner of Eighth and R streets for a model instead of taking Legree.

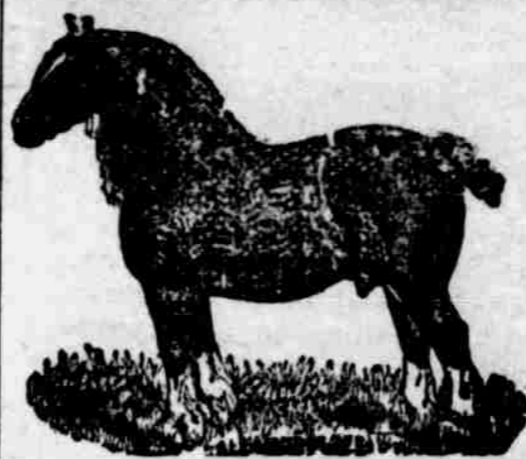
The boys live all the way from one quarter to three miles from the freight house and after working till 7 or 8 o'clock at night they have to walk that distance. It is often 9 o'clock when they get their supper and almost 10 when they get to bed. They have to rise at 5 in the morning, getting only 7 hours sleep. They cannot afford to spend ten cents a day for street car fare out of \$1.33, even if they could find a car running early enough in the morning and so are compelled to walk.

If a man quits he has a fine lot of red tape to handle before he gets his pay. I knew one of the men who did so a few days ago. He took his time from the foreman to the superintendent, got a certificate, took it to the superintendent in the passenger depot, got a check there, took it to the cashier, was told by the capricious young man with a pale mustache that he must wait till the paymaster could be heard from. He went to the office four times and did not get his pay till 5 o'clock the next day, having wasted nearly a day and a half getting what belonged to him and what almost any other corporation would have paid on the spot. It is not enough that the B. & M. grinds its men down to the lowest living wages but it must oppress them in other ways. F. E. P.

**The G. O. P. Grand Opening.**

The republican party opened its national campaign with a great meeting in New York City September 28th. Speeches were made by Boss Platt, Whitelaw Reid, Warner Miller and Chauncey Depew.

Jennings' hotel of Omaha is the only "People's party hotel." Remember this when visiting that city. 13tf



Wm. Burgess  
**BLUE VALLEY -**  
**- STOCK FARM,**  
**CRETE, NEB.**

**IMPORTER**  
**ENGLISH SHIRE STALLIONS AND MARES.**

To intending purchasers of this breed I can show them as good a lot of young stock from yearlings up, as there is in the west.

**THOROUGHLY ACCLIMATED. LAST SHIPMENT 1890.**

Their breeding is from the best strains of prize winning blood in England coupled with superior individual merit. My imported mares are superior, any in the west; they are all safely in foal.

**All My Stock Guaranteed, and All Recorded and Imported by Myself.**

If you want a Hackney Stallion, I have as good as was ever imported. Come and see what I have got, and if I cannot show you as good stock as any man, will pay your expenses. Prices as low as the lowest. 44-6m



**W. J. WROUGHTON & CO.,**

Cambridge, Furnas County, Nebraska.

IMPORTERS OF

Shire, Clyde, Percheron, Belgian, German, and Oldenberg Coach, French Coach, Yorkshire, and Cleveland Bay Stallions.

**We Handle More Horses Than Any Firm in Nebraska.**

We import our own horses thus saving the customer the middle man's profit. Buyers have the advantage of comparing all breeds side by side at our stables.

**We Have 40 Good Young Acclimated Horses on Hand.**

Another importation of 40 will arrive about October 1. We guarantee all our horses every respect. We make farmers companies a specialty, having a system whereby we can organize companies and insure absolute success.

**We Will Send a Man to Any Part of the State,**

On application to assist in organizing companies. We give long time thus enabling purchasers to pay for horses from services. Correspondence promptly answered. Mention this paper. Address,

**W. J. WROUGHTON & CO., Cambridge, Neb.**

**OBTAIN CHICAGO PRICES FOR ALL YOUR PRODUCE.**

The way to do this is to ship your **Butter, Poultry, Eggs, Veal, Hay, Grain, Wool, Hides, Beans, Eroom Corn, Green and Dried Fruits, Vegetables,** or anything you have to us. The fact that you may have been selling these articles at home for years is no reason that you should continue to do so if you can find a better market. We make a specialty of receiving shipments direct from **FARMERS AND PRODUCERS**, and probably have the largest trade in this way of any house in this market. Whilst you are looking around for the cheapest market in which to buy your goods, and thus economizing in that way, it will certainly pay you to give some attention to the best and most profitable way of disposing of your produce. We invite correspondence from **INDIVIDUALS, ALLIANCES, CLUBS,** and all organizations who desire to ship their produce direct to this market. If requested, we will send you free of charge our daily market report, shipping directions and such information as will be of service to you, if you contemplate shipping. When so requested proceeds for shippers will be deposited to the credit of the shipper with any wholesale house in Chicago. Let us hear from you, 47 8t

**SUMMERS MORRISON & Co.,**

**COMMISSION MERCHANTS, 174 South Water Street, Chicago.**

Reference: Metropolitan National Bank, Chicago.

ALLEN ROOT, Stock Agent, Nebraska State Farmers' Alliance. Office and Financial M'gr.

GEO. S. BROWN, Salesman.

**SHIP YOUR OWN STOCK.**

**ALLEN ROOT AND COMPANY,**

**LIVE STOCK COMMISSION MERCHANTS,**

South Omaha, Neb., Room 34 Exchange Building.

Before You Ship Send for the Market.

REFERENCES: First National Bank of Omaha; Packers National Bank, Omaha; Commercial National Bank, Omaha; Nebraska Savings and Exchange Bank, Omaha; Central City Bank, Central City, Nebraska.

Shippers can draw sight draft on us for 90 per cent of cost, bill of lading attached.

**WESTFALL COMMISSION CO.,** General Produce Merchants (legal representative for Kansas Alliance.) Special department for hides and game. Free cold storage and special salesman for butter, eggs, cheese and poultry. Receivers and shippers of car lots of potatoes, apples, onions, hay and cabbage. Give us a share of your consignments. We get the highest market price and make prompt returns. Direct all communications and orders to.

46tf **Westfall Com. Co., 423 Walnut St, Kansas City, Mo**