

# GOVERNOR HUGHES IS RE-ELECTED

His Majority is Over 50,000--But That is Enough for All Practical Purposes.

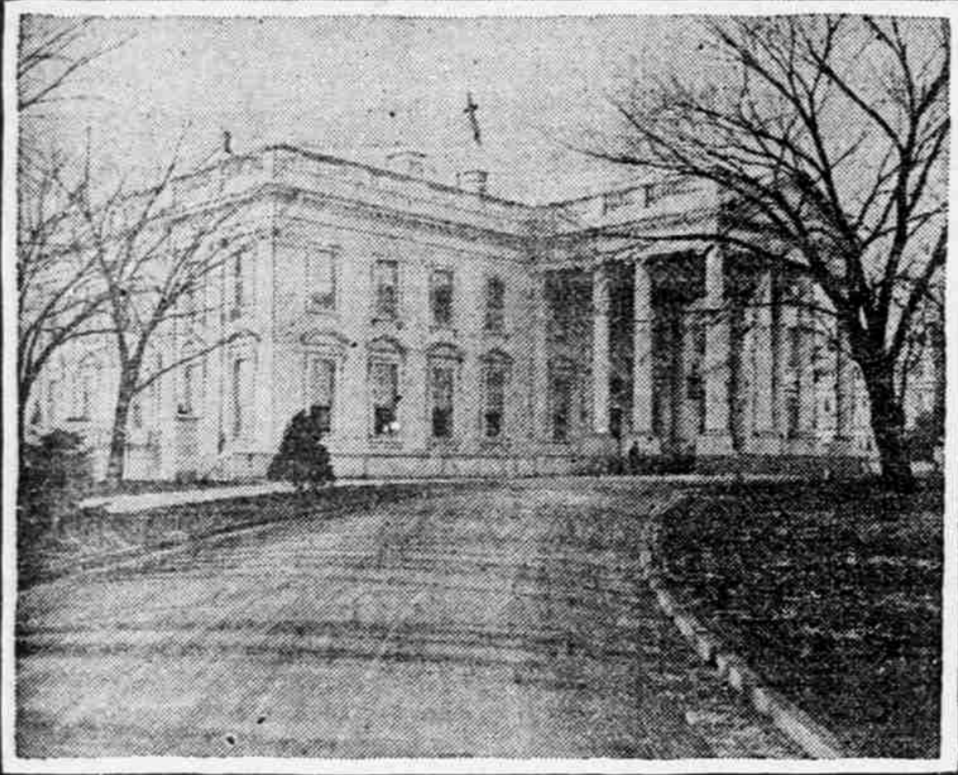
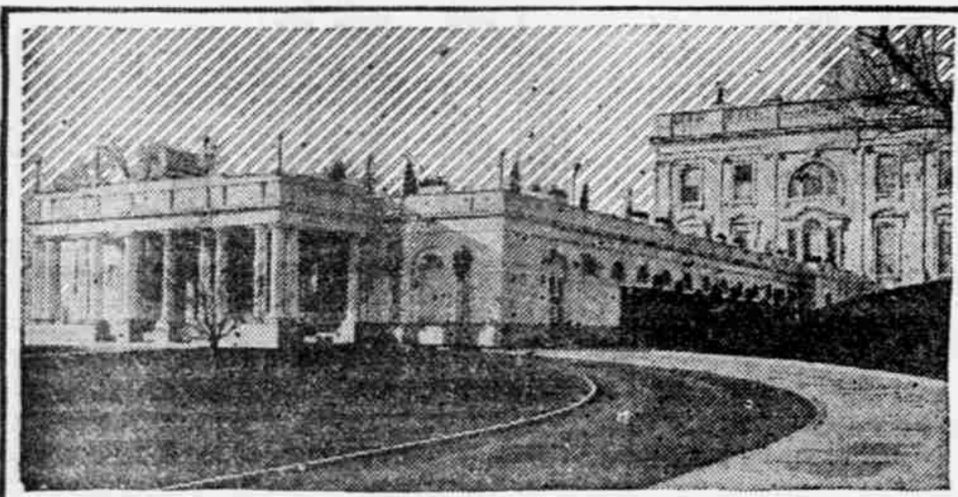
## A BRILLIANT VICTORY FOR CLEAN POLITICS

People of New York Indicate that They Know and Appreciate a Good Thing When They Have Tried and Proved It.

The election in New York, next to the overwhelming victory for Taft for president, is the most gratifying result of Tuesday's election. Standing for high and clean and fair politics against the gamblers and grafters of New York City, he made a magnificent fight against what have been considered invincible odds, and won a splendid victory.



THE NATIONAL WINNERS.



THE WHITE HOUSE.

The home of the presidents was begun in 1792 and was first occupied by President Adams in 1800. In 1814 it was burned by the British and was rebuilt four years later. The original building is a two story freestone edifice painted white. It is 170 feet long by 86 feet wide and has an Ionic portico. In 1903 the executive offices, which are shown in the upper picture, were erected. The main entrance to the White House is shown in the lower cut.



THE NATION'S CAPITOL.

The construction of the capitol was begun in 1793, and the cornerstone of the central portion of the building was laid by President Washington in September of that year. On Aug. 24, 1814, the capitol was partly destroyed by British troops, who set fire to all the public buildings. The cornerstone of the wings was laid on July 4, 1851, by President Fillmore, and Daniel Webster officiated as orator. These wings, or extensions, were completed in 1859. The total cost of the capitol was about \$14,000,000.

### MISSOURI IS IN BIG DOUBT.

Hard State Ticket Fight Favors the Republicans.

St. Louis, Nov. 5.—The electoral vote of Missouri is in doubt, late returns from the city of St. Louis and from rural districts reducing the strong lead of Bryan, so that it is impossible to say definitely who has carried the state.

The complexion of the next legislature is also in doubt, though the indications are that the Democrats will control it by four or five votes on joint ballot. This will assure the re-election of William J. Stone to the United States senate. The Republican senatorial nomination is in doubt, between Richard C. Kerens and John C. McKinley.

The Republicans have apparently elected Herbert S. Hadley for governor or by at least 8,000 plurality, and the probabilities are that he has carried the entire state ticket with him. Complete returns from the city of St. Louis give Hadley a lead of 16,000. The Democratic counties show almost uniform Democratic losses on the governorship and it is impossible at this hour to see how a Democratic majority outside of the city of St. Louis can wipe out Hadley's lead.

Harry M. Coudrey, Republican, of the Twelfth Missouri congressional district, is re-elected.

Returns compiled this morning from every county in the state give Bryan a lead over Taft in Missouri of sixty-seven votes. From eighteen of the 114 counties, however, complete returns have not been received, and for these counties the statisticians made careful estimates. Returns from the missing precincts may change the result one way or another, and it is probable that the official count alone will determine whether Missouri gives its eighteen electoral votes to Bryan or to Taft.

The same tables which give Bryan a lead of sixty-seven votes give Hadley for governor a lead of 15,148, making his election over W. S. Cowherd an absolute certainty. This is the first time in nearly thirty-five years that Missouri has elected a Republican governor.

### CONNECTICUT IN G. O. P. LIST.

Republicans Carry State by Increased Majority.

New Haven, Conn., Nov. 4.—The great size of the Republican victory in Connecticut yesterday was evident this morning when William H. Taft was found to have a plurality of 38,450. Debs polled 2,804 and Chafin, the Prohibitionist, 2,280.

The plurality for governor of Mr. Lilley, against whom a great fight was waged, was 16,004 over Judge A. Heaton Robertson, his Democratic opponent.

The leaders of both parties in the state expressed great interest in the growth of the Socialist vote, which increased from 2,932 in 1906 to 5,250 this year.

### Taft in Lead in Maryland.

Baltimore, Nov. 5.—The political pendulum has swung once more, and on the face of unofficial returns, Taft has carried Maryland by 136 votes. Unquestionably the official count, which began today, must be looked to for the actual result, and neither side will feel convinced until the result of that count is made known. There must be taken into consideration, too, the possibility of a divided electoral delegation, as, while figures are lacking, it is known that the votes for the several electors have varied and this variation may prove material.

### Illinois.

Chicago, Nov. 4.—Late returns showed conclusively that Taft had carried the state by 170,000. Deneen, the Republican candidate for governor, was elected by a plurality estimated at from 40,000 to 65,000. The next legislature, which is to choose a successor to United States Senator Albert G. Hopkins, will be composed of 58 Republicans and 176 Democrats in the house. The congressional delegation from Illinois, with three districts yet to hear from, will be composed of seventeen Republicans and five Democrats.

### West Virginia for Taft.

Wheeling, Nov. 5.—While fuller figures showed that Taft had carried West Virginia by a safe plurality of several thousand, the state ticket may not have gone through with him, Bennett, Democrat, for governor, having the best of the argument in probably half the state. In these figures Bennett had more than 1,000 plurality, but the figure was so small that the Republicans found satisfaction in the possible overturning of that amount.

### Taft Discusses Outcome.

Cincinnati, Nov. 5.—W. H. Taft gave hearty expression to the gratification he felt on his election as president of the United States. Business, labor and agriculture, he declared, had supported him. His success, he said, should be also the success of the country. If his ability and endeavor could make it so.

### Congress Still Republican.

Chicago, Nov. 4.—It is now certain that the Republicans will have control of the next national house of representatives. The returns from 355 congressional districts give Republicans, 196; Democrats, 159; missing, 36. Necessary majority for control, 196.

### North Dakota.

Fargo, N. D., Nov. 5.—Reports from the western part of the state in counties organized under the present state administration, give John Burke, Democrat, a lead of nearly 2,000 for governor, after a neck and neck race with C. A. Johnson, Republican.

### PENNSYLVANIA IS REPUBLICAN.

Party's Vote Cut Down in Cities Where Labor Element is Strong.

Philadelphia, Nov. 4.—Pennsylvania has gone Republican by a majority of 200,000, the figures being as follows: Taft, 600,000; Bryan, 400,000. In 1904 Roosevelt carried the state by 505,519, and two years ago Stuart, Republican, was elected governor by 48,435. This city, Pittsburg, Harrisburg, Altoona and other cities have given Mr. Taft pluralities, but Scranton, Wilkesbarre and towns in which the so called "labor" vote is strong have gone Democratic.

The election in Pennsylvania turned almost entirely on national issues, the highest state officer voted for being a judge of the superior court. For that office William D. Porter, Republican, has been elected by a majority of 50,000 over Webster Grim, Democrat.

The vote in the country districts was, as usual, heavily Republican. The state's representation will again be Republican in the Sixty-first congress, the Democrats having gained only one seat. The figures will be as follows: Republicans, 24; Democrats, 8.

### NEW ENGLAND REPUBLICAN.

Taft Successful in Massachusetts and Other Eastern States.

Boston, Nov. 4.—The Republican national and state candidates carried the state and all eleven Republican congressmen were re-elected. Both branches of the legislature will be Republican by heavy margins. Returns indicate a plurality for Taft of 120,000. The plurality of Lieutenant Governor Eben S. Draper, Republican for governor, is estimated at 60,000.

Boston, Nov. 4.—Complete vote of Massachusetts for president: For Taft, 250,221; Bryan, 165,860. Taft's plurality, 84,361. For governor, Draper (Rep.), 233,874; Vahey (Dem.), 173,325. Draper's plurality, 60,549.

### New Hampshire.

Concord, N. H., Nov. 4.—New Hampshire gave Mr. Taft almost as large a vote as it did Mr. Roosevelt four years ago. The balloting resulted in a majority of 20,000 for the Republican candidate, which is a decrease of 185 since the last presidential election. Henry B. Quinby, Republican, has been elected governor.

### Rhode Island.

Providence, Nov. 4.—With about two-thirds of the 161 precincts heard from, the figures indicated a probable plurality of 16,000 for Taft in the state. The Republican state ticket, headed by Aram J. Potbier, candidate for governor, has undoubtedly been successful.

### Vermont.

White River Junction, Vt., Nov. 4.—William H. Taft carried Vermont by about 27,000. Returns from about all the cities and 144 of the 240 towns give Taft 27,531, Bryan 8,345. In 1904, the same places gave Roosevelt 28,200 and Parker 6,977.

### Maine.

Portland, Me., Nov. 4.—Maine gave Taft an estimated plurality of 31,500. John P. Swasey and Frank E. Guernsey, Republicans, were chosen in the Second and Fourth congressional districts, respectively, to fill short term vacancies.

### PACIFIC COAST FOR TAFT.

Republicans Win in California, Oregon and Washington.

San Francisco, Nov. 4.—There was no state election in California to complicate the issues, and the Republican national ticket carried the state by about 40,000 majority. In 1904 Roosevelt carried the state by 115,822 over Parker. The solid Republican delegation has been re-elected without change, and a Republican state legislature insures the election of a Republican to succeed Senator Perkins. The proposition to remove the state capital from Sacramento to Berkeley has been rejected.

### Washington.

Seattle, Wash., Nov. 4.—Washington's five electoral votes will be cast for Taft, the Republican candidate having carried this state by a popular majority of 30,000, reducing Mr. Roosevelt's majority in 1904 by 43,442. Samuel C. Cosgrove, Republican, has been elected governor, and the state's legislature will remain Republican by a large majority.

### Oregon.

Portland, Ore., Nov. 4.—Returns from all parts of the state indicate that Taft has a large majority. There was no state election.

### Speaker Cannon Re-Elected.

Danville, Ill., Nov. 4.—Joseph G. Cannon has been re-elected to congress by a plurality of at least 10,500. The fight made against him by various church organizations, the Anti-Saloon League and organized labor, coupled with the fact that the Democrats had for the first time since 1863 a complete organization in this district, led the Republicans to believe that Mr. Cannon's plurality would not be over 3,000.

### Delaware Goes Republican.

Wilmington, Del., Nov. 4.—Delaware, considered doubtful before the election, has gone Republican, giving three electoral votes to Taft. Simeon S. Pennewell, Republican, will be the new governor.

### Wyoming Republican.

Cheyenne, Wyo., Nov. 4.—This state's three electoral votes will be cast for William H. Taft, but his popular majority is considerably below that of Mr. Roosevelt.

JOHN E. KELLEY  
ATTORNEY AT LAW and  
BONDED ABSTRACTER  
McCOOK, NEBRASKA.  
Agent of Lincoln Land Co. and of McCook Water Works. Office in Postoffice building.

C. H. BOYLE C. E. ELDRED  
**BOYLE & ELDRED**  
ATTORNEYS AT LAW  
Long Distance Phone 44  
Rooms 1 and 7, second floor  
Postoffice Building McCook, Neb.

H. P. SUTTON  
**JEWELER**  
MUSICAL GOODS  
McCOOK, NEBRASKA

Uplike Grain Co. FOR  
**COAL**  
Phone 169 S. S. GARVEY, Mgr.

**Middleton & Ruby**  
PLUMBING and  
STEAM FITTING  
All work guaranteed  
Phone 182 McCook, Nebraska

**We Can't Do It**  
for what some others  
do your work for,  
**But We Can Do**  
better, which is more  
important to you, as  
the life of your  
**Shirts, Collars & Cuffs**  
are lengthened by our  
process of laundering  
them.  
LET US TRY A LOT FOR YOU  
**McCook**  
**Steam Laundry**  
Phone 35

## Our Regular Prices Seem Bargain Counter Figures

But the Goods Are All Fresh, Clean and New

- |                          |                          |
|--------------------------|--------------------------|
| McCook Views in Colors   | Post Card Albums         |
| Typewriter Papers        | Duplicate Receipt Books  |
| Box Writing Papers       | Tablets—all grades       |
| Legal Blanks             | Lead Pencils             |
| Pens and Holders         | Notes and Receipts       |
| Calling Cards            | Blank Books              |
| Manuscript Covers        | Writing Inks             |
| Typewriter Ribbons       | Erasers, Paper Fasteners |
| Ink Pads, Paper Clips    | Ink Stands               |
| Brass Eyelets            | Bankers' Ink and Fluid   |
| Stenographers' Notebooks | Library Paste, Mucilage  |
| Photo Mailers            | Self Inking Stamp Pads   |
| Memorandum Books         | Rubber Bands             |

These Are a Few Items in Our Stationery Line

## THE TRIBUNE Stationery Department

### BEGGS' CHERRY COUGH SYRUP cures coughs and colds.

S. N. CLINE  
Contractor and Builder  
Prices Reasonable  
All Work Warranted

**Burlington Route**  
**WINTER JOURNEYS**  
Winter Tourist Rates

Daily low excursion rates after November 20th to Southern and Cuban resorts. Daily now in effect to Southern California. Lower yet, homeseekers' excursion rates, first and third Tuesdays, to the South and Southwest.

### Corn Show, Omaha

December 9 to 19. Visit this interesting exposition of the best corn products and their use. Attractive program with moving pictures, electric illuminations, sensational prizes for best exhibits. Consult the agent or local papers.

### Secure an Irrigated Farm

We conduct you on the first and third Tuesdays of each month to the Big Horn Basin and Yellowstone Valley, assisting you in taking up government irrigated lands with a never-failing water supply under government irrigation plants. Only one-tenth payment down. No charge for services. Write D. Clem Deaver, General Agent, Landseekers' Information Bureau, Omaha, or

**D. F. HOSTETTER.**  
Ticket Agent, McCook, Neb.  
L. W. WAKELEY, G. P. A., Omaha, Neb.