

'Auto Freight to Begin Next Week

New Transportation System to Serve 100-Mile Radius.

Omaha's newest mode of transportation—the intercity truck system—will begin operation next week, according to an announcement Saturday.

The trucking service will embrace territory with 100 miles of Omaha and will give merchants and wholesalers on the routes regular and responsible delivery service the entire year.

The Omaha truck terminal depot where the fleet of trucks will secure the merchandise, is at Fourteenth and Leavenworth streets. The Omaha financials behind the project are Walter S. Jardine, George West, Sr., and George Johnson.

Others Co-Operate.

Co-operating are several outstate transfer companies, and negotiations are now being made with numerous others to make this intercity service complete. Those that have joined the trucking system are:

Fremont Union Transfer company, Fremont; Higgins Transfer company, Nebraska City; Marshall Transfer company, Wahoo; De-Line Transfer company, Kennard; Gans Transfer company, Millard; Cooksey Transfer company, Red Oak, Ia.; Dietz Brothers, Gretna; Ralston Trucking company, Ralston; Dietz-Aschland Trucking company, Ashland; Chambers Transfer company, Oakland, Ia.; Tokamah-Deatur Truck Line, Columbus Transfer company, Columbus; W. D. Cross Trucking company, Sidney, Ia.

The new system will make possible the delivery of goods in the 100 miles surrounding Omaha from eight to twelve hours quicker than at present. The population of the area served by the system is estimated at 1,500,000.

Household Goods Also.

In sending shipments over the truck routes, the Omaha terminal depot may be furnished bill of lading by 11 a. m. daily except Sunday for the departure of the merchandise on all lines at 1 p. m. to insure prompt delivery the same day. Special or late runs also may be arranged on reasonable notice.

Special attention also will be given to household goods and truck load or package freight for quick delivery anywhere in Iowa or Nebraska within 100 miles of Omaha, or between the various towns on the truck routes. Telephone orders from merchants of surrounding cities will be forwarded to any points within the truck zone promptly by the first truck leaving for that point, if received before 11 a. m.

The Omaha truck terminal depot covers one-fourth of a block along the two streets and a loading platform on Fourteenth street is 120 feet long. Perishable goods, breakable merchandise, and anything requiring special care in handling can be given proper attention at the depot to insure its arrival at destination in good order.

Goods shipped by truck between points on the routes in the system, can be picked up at the store or address in point of origin by the local cartage companies and delivered directly to the store or address in the smaller towns. On shipments from these points to Omaha, the goods may be unloaded at the terminal depot and distributed to the consignees from there by their various cartage companies. Shipments also may be made in less than truck load lots from point to point in Iowa and Nebraska, to points on the truck routes.

RAILROAD OFFICER SUCCEEDED BY SON

R. D. Pollard has relinquished the position of tax agent for the lines west of the Burlington railroad, which he occupied for 41 years, to his son, Frank S. Pollard. The son will assume the office May 1, an announcement by the general manager said yesterday.

The elder Mr. Pollard requested some time ago that he be retired on a pension, and this request was granted a few months ago. He is now living at Palmetto, Fla., where three other sons live.

His son entered the service of the Burlington 22 years ago, in his father's department, and for a number of years has been assistant tax agent. The tax department handles all payments of taxes on road property west of Omaha.

OFFICERS ELECTED FOR LOWE AVENUE

The annual congregational meeting of the Lowe Avenue Presbyterian church was held on Wednesday evening. Dr. J. M. Patton was chosen president and C. L. Vance, secretary, for the ensuing year. Reports of the various organizations were given, showing one of the best years in the history of the church. Twenty-three thousand dollars were expended and a good sum left in the treasuries. Thomas Landale, A. C. Smith, H. S. McAllister and Dr. H. M. McClannahan were elected to the session. M. V. Longley, Elmer Johnson and A. H. Lentz were elected to the board of deacons. J. T. Buchanan, J. B. Owen and F. G. Buchner were elected to the board of trustees.

Police Rounding Up Joyriding Youths

Police are rounding up a crowd of joyriding youths in the northeast section of the city, following the arrest Friday night of Clarence Summers, 18, 4116 Charles street, and Homer Davis, 13, 4042 Seward street, who were found in an automobile stolen from N. H. Hawkins, 2015 North Twelfth street.

From these, two of the names of a dozen other boys who are alleged to have become impromptu motorists in "borrowed" cars were obtained. Marion Connor, 14, 4618 Blondo street. Incarcerability is the charge against the three.

They never included girls in their parties. But half a dozen boys would pile into a car and ride.

Latchstring Always Out at Tirawa Lodge, Rendezvous Near Bellevue



by EDWARD BLACK.

In your springtime rambles through beautiful Fontenelle forest reserve, and then in the direction of historic Bellevue, keep your eyes open for a shack with a sign which reads "Tirawa Lodge." Here you may rest in one of the prettiest nature spots of Nebraska. In this sanctuary of trees and birds you are in the great out-of-doors. In these woods only 100 years ago the Indians were beginning to comprehend the meaning of the "Great White Father."

During the summer of 1804, Lewis and Clark, while on their notable expedition, following the Louisiana purchase, visited this spot which is closely identified with the history of the Omaha Indians. Near this little lodge are the old Indian burial grounds.

Fontenelle's Grave.

In 1912 a party of Omahans located the grave of Logan Fontenelle, chief of the Omahas. The searchers found stones which marked the grave. The Indian agency was transferred from Council Bluffs Fort Calhoun 102 years ago, and it is just 100 years since Peter Sarny arrived in this district to begin his great work of helping to settle this western empire.

"Tirawa" means "Great Spirit of the Pawnees." The lodge is owned by Jessie Stitt, principal of Lake school, and Christine Jensen, art teacher of the same school. Their love of nature is reflected by the interest their pupils are taking in birds, trees and flowers. The school recently received an excellent set of bird pictures in natural colors. The pupils have a Blue Bird club.

North of Bellevue.

The lodge is about two miles north of Bellevue and west of Mormon hollow. It has long served as a rendezvous for groups of teachers and pupils. The Story Tellers' league of South High school and chapter M of the P. E. O., have enjoyed outings to this shack. In these woods the birds sing their sweetest, because they are never molested, and here the wild flowers blossom in profusion.

The latchstring of Tirawa is always out. There is an outdoor fireplace for cooking and inside there is a stove. The interior decorations are in keeping with the surroundings. Did you ever eat breakfast at 6 a. m. in the wildwood in the merry springtime or in the good old summertime? The Misses Stitt and Jensen say it is good for what ails you. They

The New KIMBALL Baby Grand Piano

Priced \$975.00 On Liberal Terms

Do you live in a small apartment? A cottage? A bungalow? A home where it might be unwise to have a large grand piano?

The Kimball piano is a perfected small grand. It is the product of specialists, made by an organization which has built high-grade pianos for over 75 years.

Quantity production, scientific equipment and technical skill making possible the low price at which it is offered—\$975.00. In the judgment of our experts this is the very least for which a piano of true Grand Piano tone may regularly be sold, at present costs of material and labor.

You may see this instrument in our beautiful Piano Parlors. It is beautiful, in its artistic mahogany encasement, with satin finish. When you play it yourself, which you may do in a separate room, all undisturbed; when you hear its pure resonant tone, you will say, especially if you are a musician, that it is a real Grand piano, notwithstanding its low price.

A. HOSPE CO.

1513 Douglas Street

Sunny Weather Easter Sunday

Fair But Somewhat Cooler, Prediction of Weather Forecaster.

A fair, warm and sunny Easter is the promise of Meteorologist Robbins. The weather will be ideal for the safe display of new hats, frocks and other finery of the women, to say nothing of the new suits and hats of the so-called sterner sex.

POSTOFFICE MAIN FLOOR

Telephone and light bills may be paid on this floor.



Convenient End Table

The substantial construction and the careful turnery of the base mark this attractive end table as a piece suitable for a score of places in the well appointed home. Finished in antique mahogany. Price

3.95
Console Table to match, 30 inches high 5.75

The Special Purchase Sale of M. E. Smith & Co.'s

Rugs

Presents Many Bargains

This large wholesale stock contained a number of excellent rugs that were stocked in quantities sufficient to supply scores of homes with the same pattern. In the list below are many such items, all thoroughly well worth while.

- 9x12 Seamless Tapestry Rugs in good colors and patterns suitable for bedrooms. Three grades at less than Smith's wholesale prices—19.75 17.75 15.75 These Tapestry Rugs are shown in very large assortment, and they may well be considered desirable.
- 8-3x10-6 Wilton Rugs (seamless) 67.50
- 9x12 good quality Axminster, at 31.50
- 9x12 Heavy Seamless Axminster 35.00
- 9x12 Blue Seamless Velvet, at 49.50
- 9x12 Figured Seamless Wilton Velvet 39.50
- 9x12 Best Body Brussels, at 47.50
- 9x12 Wool Wiltons, Chinese patterns 79.50
- 9x12 Seamless Velvet Rugs, at 32.50

Extra Large Sizes

- Wool and Fiber Reversible Rug, 12x12 size, at 12.75
- Wool and Fiber Reversible Rug, 12x15 size, at 14.75
- The above rugs are very cheap, indeed.
- 11-3x12 Heavy Axminster Rugs 39.00
- 11-3x12 Seamless Tapestry Brussels 23.50
- 9x15 Seamless Tapestry Brussels 29.00
- 9x15 Heavy Axminster, at 47.50
- 11-3x12 Extra Heavy Axminster 57.50
- 11-3x15 Oriental Pattern Axminster 59.00
- 10-6x13-6 Best Body Brussels 110.00
- 10-6x13-6 Fringed Wool Wiltons 105.00
- 11-3x12 Worsted Wiltons, linen fringed 167.50
- 11-3x15 Wool Wiltons, Oriental patterns 125.00
- 11-3x18 Heavy Worsted Wilton 215.00

Small Rugs—Prices Very Low

- Smith's had an unusually large stock of small rugs, especially in the Wilton qualities, they are now offered at very low prices.
- 27x54 Choice Pattern Wilton Velvet Rugs 7.50
- 27x54 Fine Worsted Wilton Rugs 11.50
- 27 x 54 Dropped Patterns, Hartford Saxony 12.75
- 36x63 Linen Fringed Wilton Velvet Rugs 6.90
- 36x63 Worsted Wilton Rugs, big assortment 15.75

Traveling Men's Samples

- Large assortment of Smith's traveling men's road samples of Fine Wilton and Body Brussels.
- Wool Wilton samples, 27x54, each 2.95
- Worsted Wilton samples, 27x54, each 3.75

"Fair tonight and Sunday; cooler tonight," is the official forecast.

Washington, April 11.—The weather man spread good news today for all those preparing to blossom forth tomorrow in Easter finery.

Generally fair weather over the entire country, with temperatures at normal or above, was the forecast. There will be some scattering exceptions, with showers early tomorrow in some sections of New England and west of the Rocky mountains.

Washington, April 11.—Weather outlook for the week beginning Monday: Upper Mississippi and lower Missouri valleys: Fair Monday; showers Tuesday or Wednesday and again at end; temperature normal or slightly above most of the week.

Scotch Collie Condemned to Death in Police Court

Joeko, Scotch collie owned by C. W. Moats, 614 North Nineteenth street, ran out and bit Joe Nellis, 8, a neighbor's boy, Friday. Joe's father had Moats arrested. In Central police court Moats declared the dog was only trying to play with Joe. He said his three children, Helen, 12, Billie, 8, Bob, 18 months, and Joe Nellis were constant companions of the dog.

Joeko just saw Joe Nellis going by the house and ran out and grabbed

Union Pacific Operators Given 2-Cent Increase

Telegraphers of the Union Pacific railroad will receive approximately \$40,000 a year increase in salaries through the granting of a 2-cent an hour raise by the United States railway labor board, according to G. H. Sines, assistant to the vice president of operations of the Union Pacific system.

Smells Like a Still; It Is.

"Smells like a still here. You got one?" deputy sheriffs asked George P. Hooper when they went to his home, 2112 South Tenth street, Council Bluffs, Friday night. "Sure," said Hooper. "Come and see it."

In his cellar he showed them a 50-gallon still in full blast. He is in the county jail charged with maintaining a liquor nuisance.

Orchard-Wilhelm

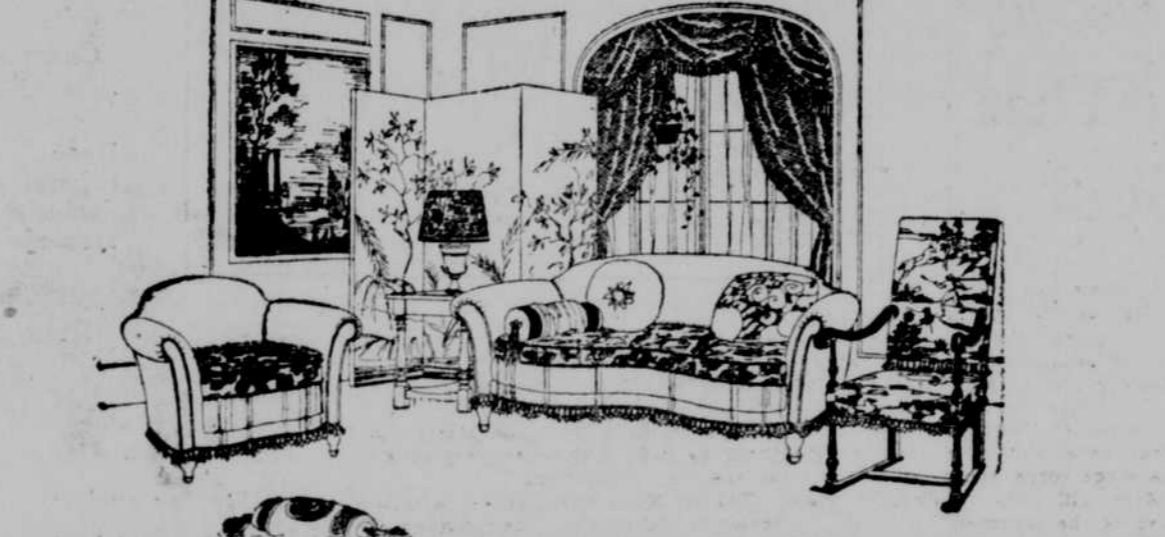
SIXTEENTH AND HOWARD STREETS

Customers are invited to a special selling of superior Livingroom Furniture especially:---

Valentine-Seaver's Overstuffed Furniture and Imperial Tables—Sold in Omaha Exclusively by Orchard & Wilhelm Company

Recognized throughout the furniture world as leaders in their respective lines, we are pleased to announce a comprehensive showing of the very latest patterns they have each created, together with other exceedingly attractive living room pieces you will be pleased to consider for your home.

NOTE—New veneerings of rare and choice woods are featured in many of the new IMPERIAL TABLES. Solid mahogany frames, really carved by hand, moss and hair fillings and unexcelled construction are common to all Valentine-Seaver suites. The new coverings include broadleaves, linens, damasks and the finest mohairs in delightful combination. PRICES ARE SURPRISINGLY LOW.



New Kidney Davenport and Arm Chair

Upholstered in mohair of exceptional quality with the sides and backs covered in mohair as well as the fronts and with the cushions reversible from mohair to fine figured tapestry.

Davenport, 198.00 Arm Chair, 98.00

Occasional Arm Chairs in Antique Mahogany finish with medallion tapestry upholstery in a variety of patterns. 49.50



An O. & W. 3-Piece Livingroom Suite

Specially Priced to Save You ONE-THIRD.

A suite very similar to the one pictured, except that it has handsome carved feet, is offered while the stock lasts, as follows:

Wing Chair, Davenport and Arm Chair, 159.00, 165.00, 169.50, 179.50
3 PIECES, in fine velours, at 267.00
One suite only in mohair at 267.00



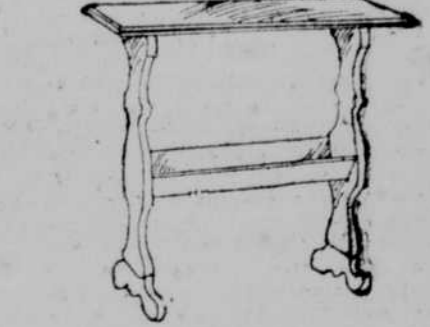
Solid Mahogany Imperial Table

This new Spanish type of Library Table, with its quaintly turned and splayed legs is very attractive. Top measures 24x50 inches. The price is just wonderful—

45.00
Same Table in the Davenport style, but without drawer under top. Size 19x62 inches, price also \$45

OUT-O-DOOR T-H-O-Y-S

"Dolly Hospital" Now Located With The Toys



End-Table-Book-Rack

Built of selected gumwood, finished antique brown mahogany. Special price—

5.75

The Special Purchase Sale of M. E. Smith & Co.'s

Draperies

Presents:—

opportunities to curtain and drape your whole house at HALF PRICE. Selections are not large and quantities are limited, but values are WONDERFUL indeed.

- Artificial Silk Curtain materials, 36 inches wide, in a check design, 1.50 quality, at 75c
- Barred Silk Voile "Waldorf," 36 inches wide, regular 1.00 per yard 60c
- 50-inch Silk Gauzes and Casements at marked reductions—
1.50 1.68
1.95 2.50
- Curtain Nets in fllet, super fllet and shadow effects. Prices about half—30c, 38c, 50c, 65c, 85c.
- Crewel embroidered Poplin Curtains in rose and blues. Regular 12.75, for. 3.95
- A few very good patterns in Terry cloth, 1.00 quality for 65c
- A number of cotton Poplins and Silk Tussahs in rose, green, blue, natural and gold.
Regular 50c quality for 25c
Regular 75c quality for 28c
Regular 1.00 quality for 50c
36-inch cotton and silk and cotton madras.
Regular 75c values 38c
Regular 1.00 values 50c
Regular 1.25 values 65c
Regular 1.50 values 75c
- 50-inch rose cotton repp, suitable for draperies or chair covers. Regular 1.50 quality 75c
- Overdrapery materials in silks and damasks, light and medium weights, in very desirable colors at marked reductions, 1.00, 1.95, 2.25, 2.75, 3.50
- 36-inch 6 feet Duplex Window Shades (green and white.) Regular 1.65, for 85c
- Beau Portiere Extension Poles, 1 inch in diameter, extends to 7 feet. Regular 1.00, for 50c
- Flat "Curvex" Extension Rods (single)—
50c quality 25c
75c quality (extra length), for 35c
- 1 1/2" Extension Sash Rods for 8c
- Double Flat Extension Rods of extra length, 90c quality 45c
- 36-inch red and natural bur-lap, worth 35c, goes at, for 15c
- 36-inch blue and red denim in the 50c "piece dived" quality will be, yd. 19c
- 36-inch Plain Colored Silko-lins of standard 25c quality in green, gold, rose, lavender, blue, black, white and red, per yard. 12 1/2c
- Twenty-five patterns in good quality cretonne, regular 35c, per yard, 15c and 19c.
- Fifty patterns in colorful cretonne, regular 50c quality, per yard 25c

Carpets

From the Smith Stock

- Broadloom Velvet Carpet, 11 feet, 3 inches wide, in the new heather color. An excellent quality at a very low price, per sq. yd., 4.75
- Tapestry and Velvet Stair Carpet, 27 inches wide, in Oriental patterns and plain colors, per yard 1.85
- Axminster and Velvet Carpet, plain and figured short rolls (enough to cover small rooms), per yard 2.75
- Wilton Velvet Carpet of excellent quality in plain blue and rose colorings, per yard 3.75