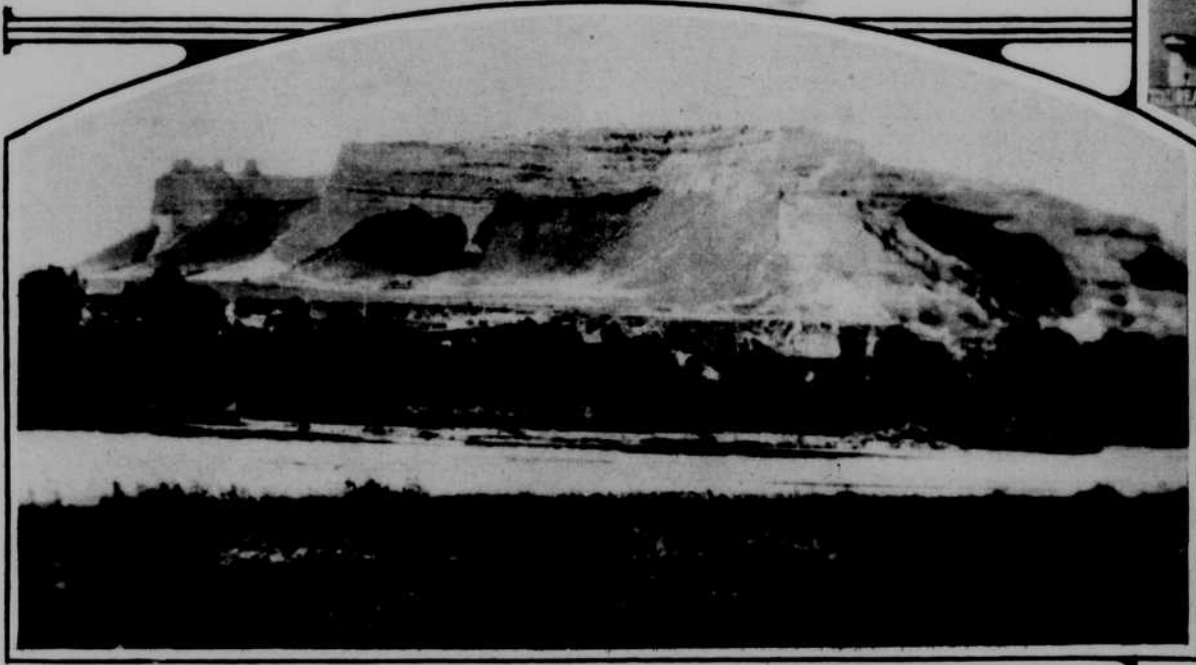


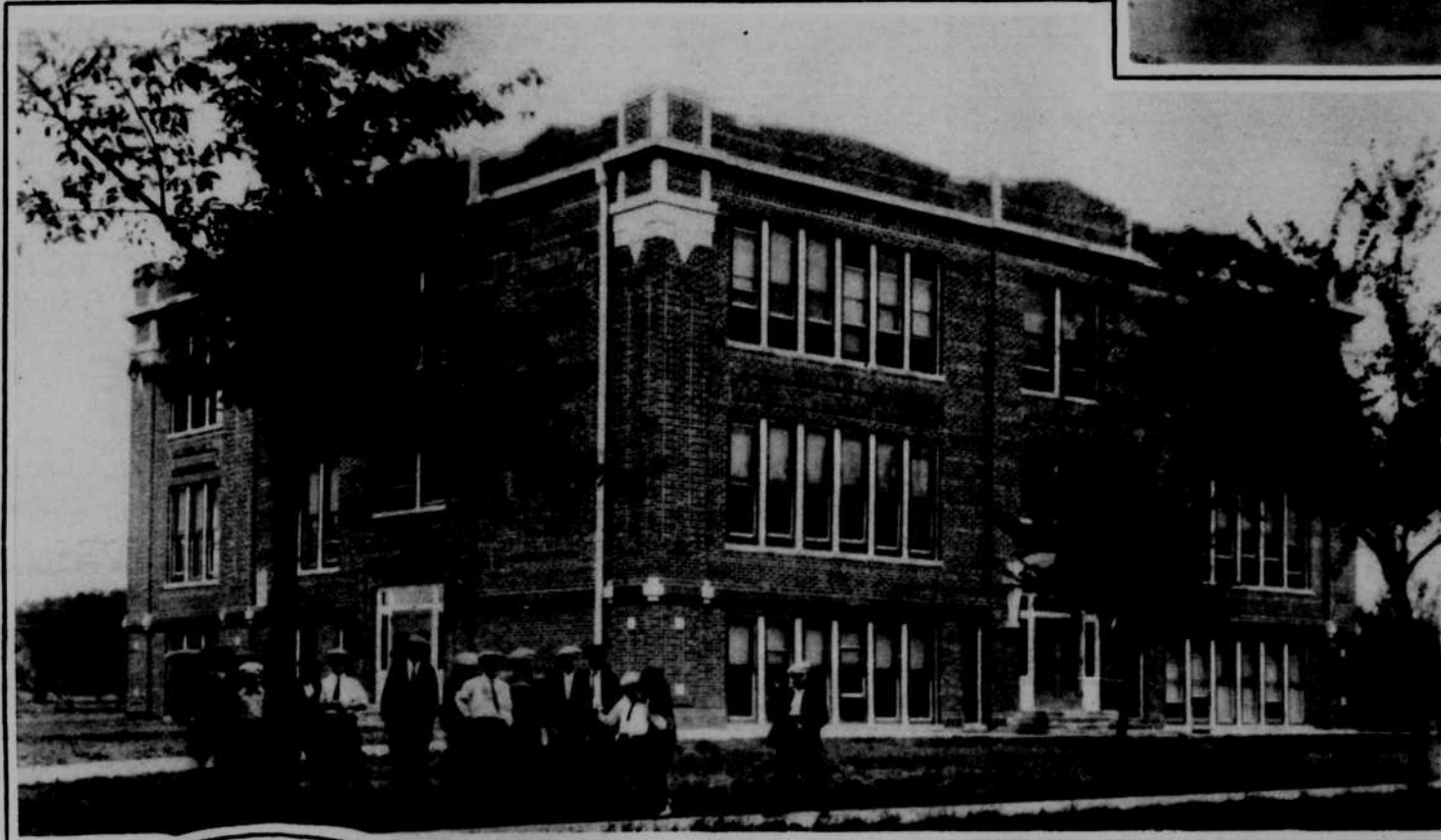
## Seen ❖ ❖ Around Nebraska



Main street in McCook, Neb.



Scottsbluff. This is the bluff which brought the city of Scottsbluff its name.



High school at Loup City, Neb.



A typical bit of scenery that attracts the visitor to Crawford, Neb.



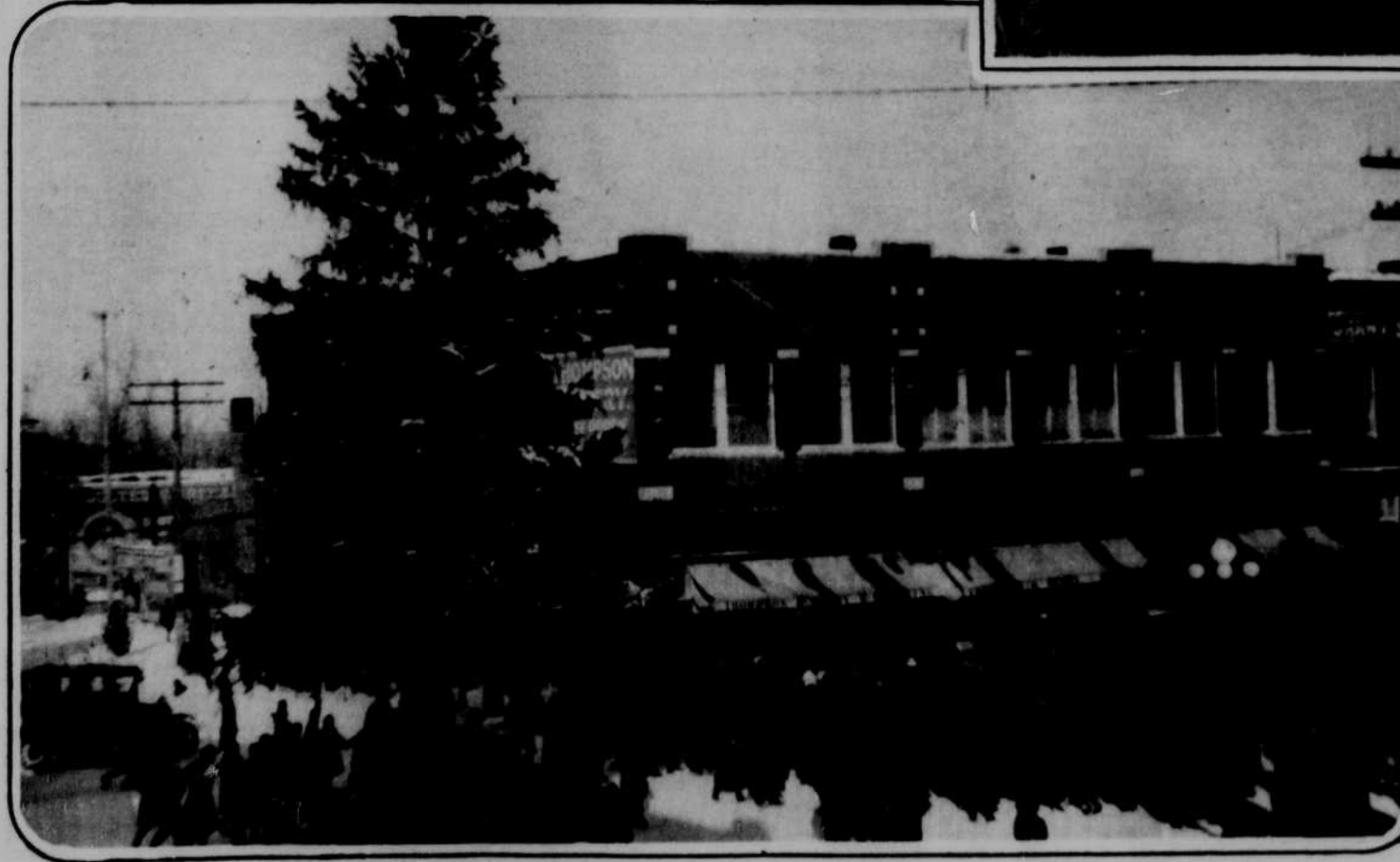
High school at Shelton, Neb.



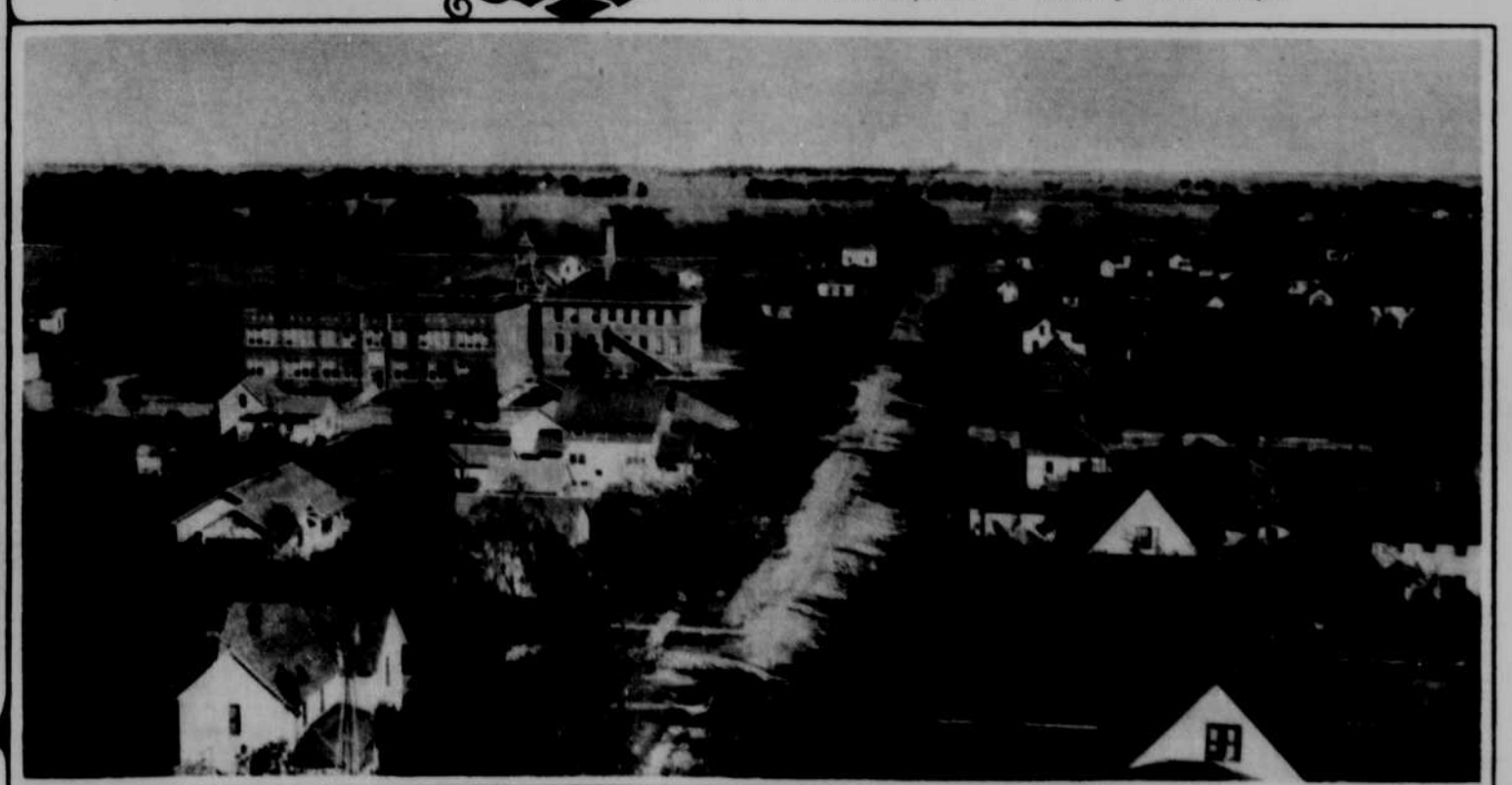
Court house at Clay Center, Neb.



The result of the efforts of the residents of Carleton, Neb. to beautify their village.



Auburn's Christmas tree. Auburn's business section may almost be said to have grown around this tree, which was planted in 1877 by W. W. Harmon.



Looking down over Atkinson, Neb. from the water tower.