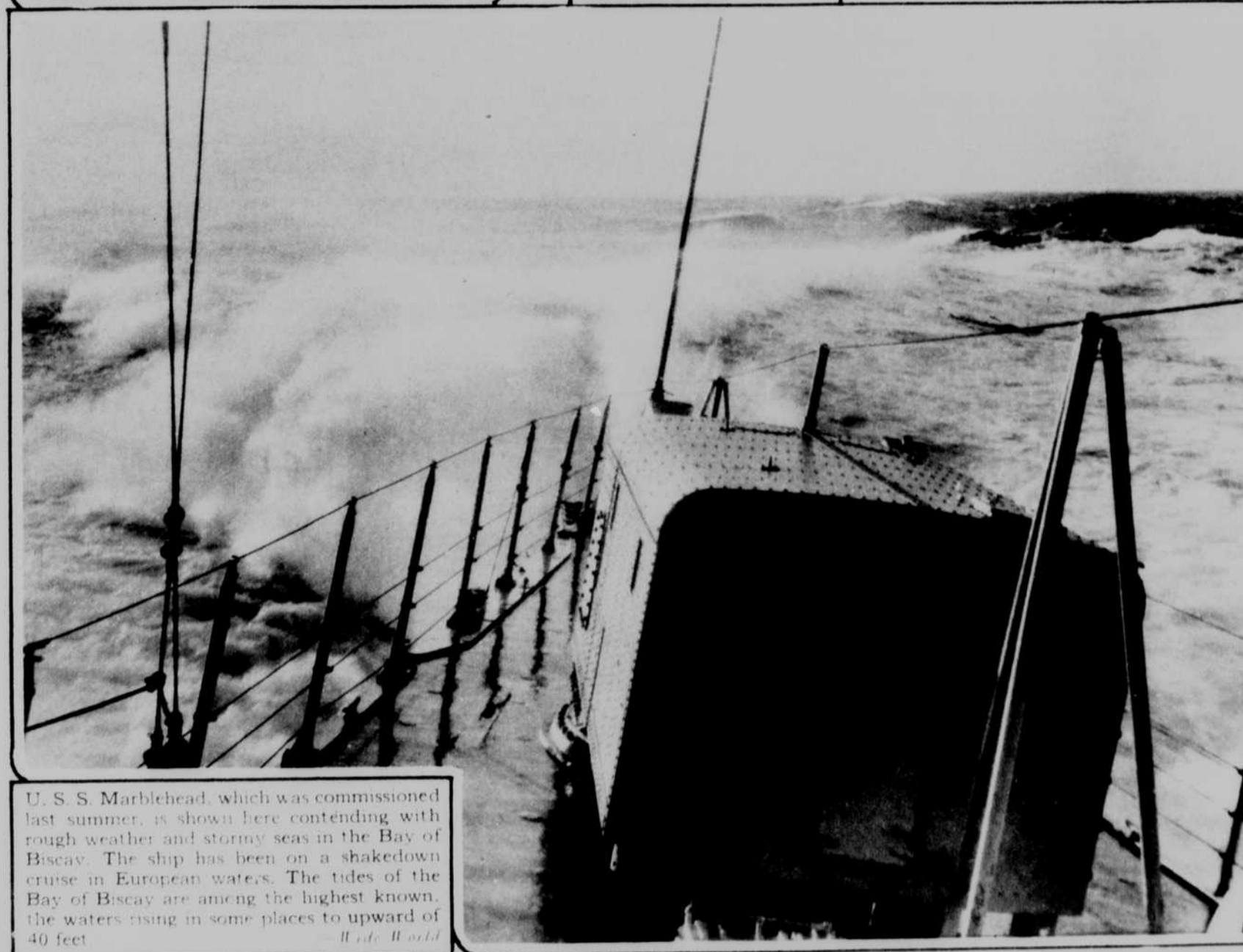


Southern exposure of main Mountain, showing Nisqually Glacier in foreground. Photograph was taken at rim of the Glacier, near Paradise Inn. This Glacier is slightly more than seven miles long and originates in the summit snows of the Mountain. The Nisqually Glacier and a number of others, move down their separate canyons at rate of from 16 to 20 inches per day.

Harry Kahne, "mental marvel" at present making a vaudeville tour, entertains the cross-word puzzle fans in Washington, by working one out backwards, while being hung from the top of one of the tall office buildings in the Capitol city.



A remarkable bust of the present Pope, Pius XI, the work of Francois Cogne, well known French sculptor, done especially for the Holy Year. It is the first time the Pope has permitted a foreign artist to make a bust of him.



U. S. S. Marblehead, which was commissioned last summer, is shown here contending with rough weather and stormy seas in the Bay of Biscay. The ship has been on a shakedown cruise in European waters. The tides of the Bay of Biscay are among the highest known, the waters rising in some places to upward of 40 feet.



THIS IS THE DAY OF PREVENTION. Today, danger is marked wherever it exists—on railroads and highways, on land and on sea. Civil officials, as well as medical and dental authorities, are designating Danger Lines that demand our constant respect and attention.

## Safeguard your health at THE DANGER LINE

THROUGHOUT the world today, medical and dental authorities are seeking to safeguard health by warning us of danger. That is why dental authorities have pointed out The Danger Line on our teeth—a vital point where all should practice prevention.



Cross-section of a tooth showing decay at The Danger Line

For it is in the tiny V-shaped crevices along The Danger Line that food particles lodge and ferment, causing acids which lead to decay. The gums become infected, bleed and recede from the teeth. Pyorrhea often follows. Undermined health—even heart trouble, rheumatism and kidney disease—may be the result from infection due to decay

at The Danger Line.

Your dentist will tell you that Milk of Magnesia is a safe, thorough, effective means of counteracting the acids of the mouth which cause decay. Squibb's Dental Cream is made with Squibb's Milk of Magnesia. It cleans your teeth thoroughly and brings out all their natural beauty. It neutralizes the acids which attack the teeth. It stops Acid Decay. It reduces the peril of Pyorrhea. No dental cream can do more.

To get children to brush their teeth regularly, give them Squibb's Dental Cream. It is pleasant to use and safe for all—even for the baby.

## SQUIBB'S DENTAL CREAM

Made with Squibb's Milk of Magnesia



SQUIBB'S MILK OF MAGNESIA—The Standard of Quality—recommended by physicians everywhere, may be purchased in large and small bottles from your druggist. If you have not used Squibb's Milk of Magnesia, we urge you to try it and note its definite superiority—its entire freedom from a bitter, alkaline taste.

E. R. SQUIBB & SONS, Chemists to the Medical and Dental Professions since 1858

### Mail this Coupon TODAY

Something for you—something for the children

E. R. SQUIBB & SONS Dept. 60D  
P. O. Box 1332 New York City

We have had prepared a charming little booklet for children, *The Times That Live in a Tube*, telling in story form the importance of oral hygiene. We shall be glad to mail a copy with a generous trial-size tube of Squibb's Dental Cream for you—just the booklet or sample alone to be.

Check the one wanted:

Enclosed in for booklet and trial-size tube of Squibb's Dental Cream

Enclosed in for sample tube

Enclosed in for booklet

Name \_\_\_\_\_

Address \_\_\_\_\_

City \_\_\_\_\_ State \_\_\_\_\_