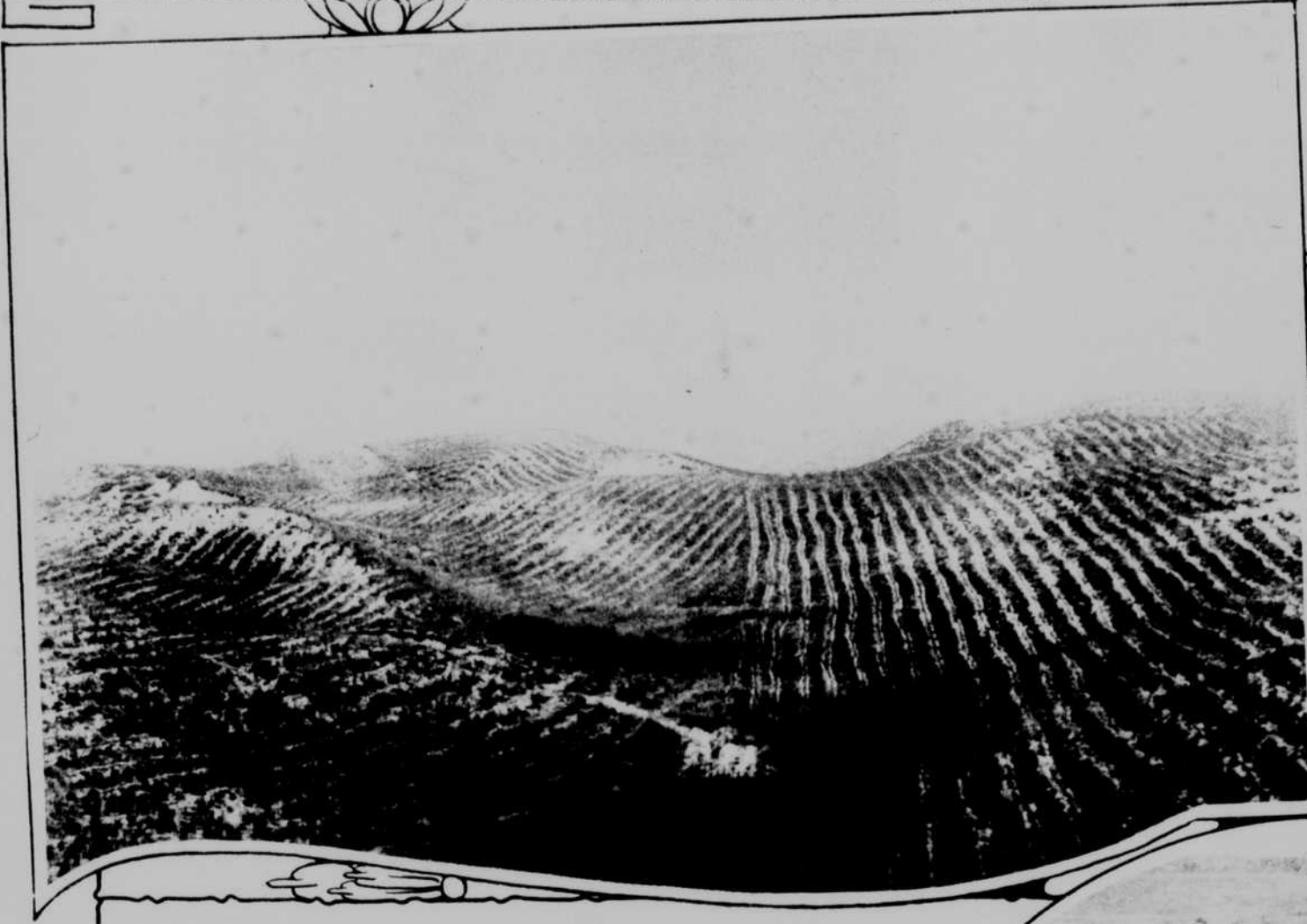
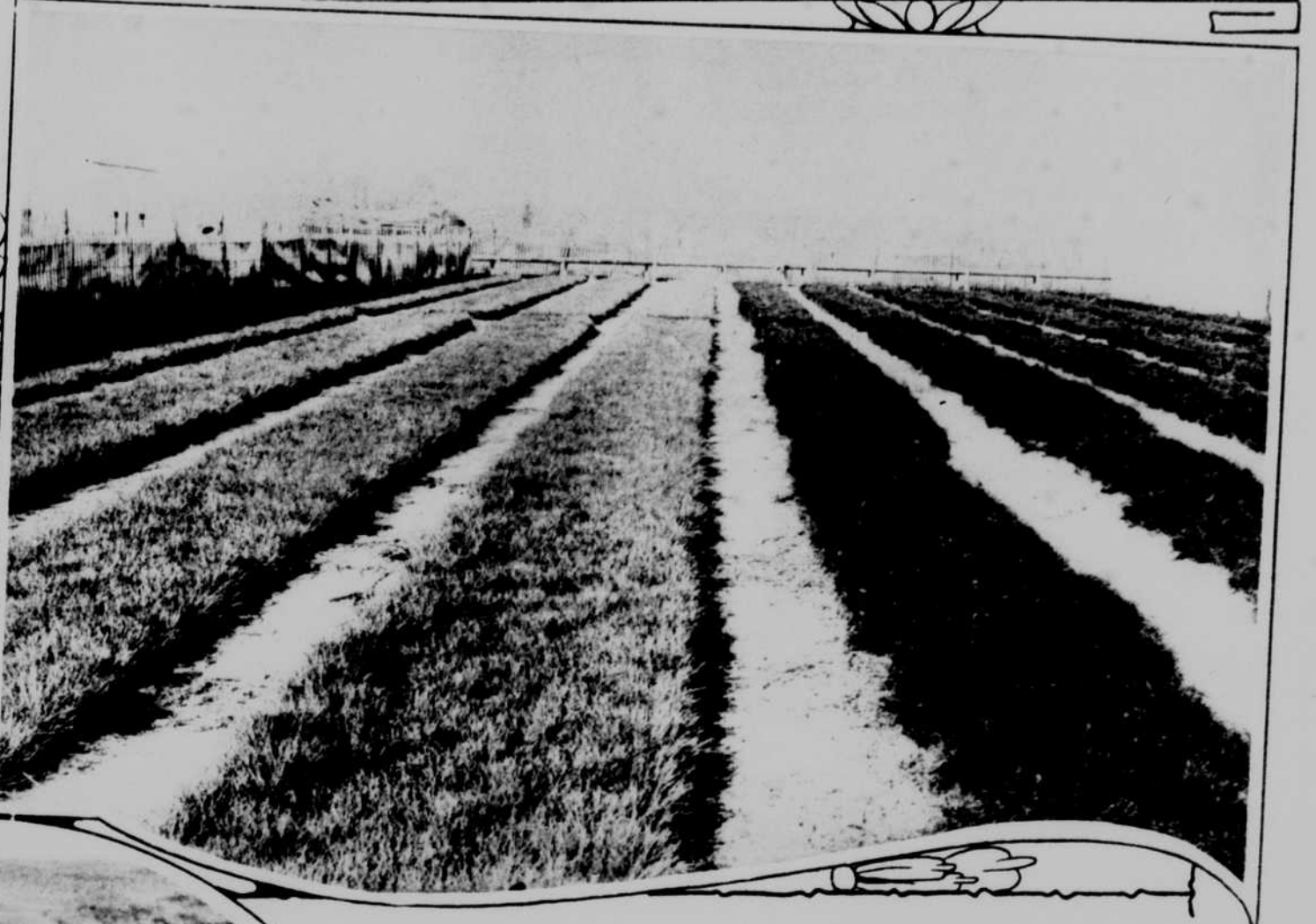


The Nebraska National Forest



A typical area of sandhills in the Nebraska National forest immediately after planting. The trees are planted in a furrow which is made by use of a sidehill plow.



Seedlings 2 years old in beds in the Bessey nursery at Halsey. They are transplanted for the third year.



Headquarters' building and rangers' cottage at the Bessey nursery.



View of block three of Bessey nursery at Halsey, Neb., in the middle Loup valley. The nursery grows 2,000,000 trees annually for planting in the Nebraska National forest.

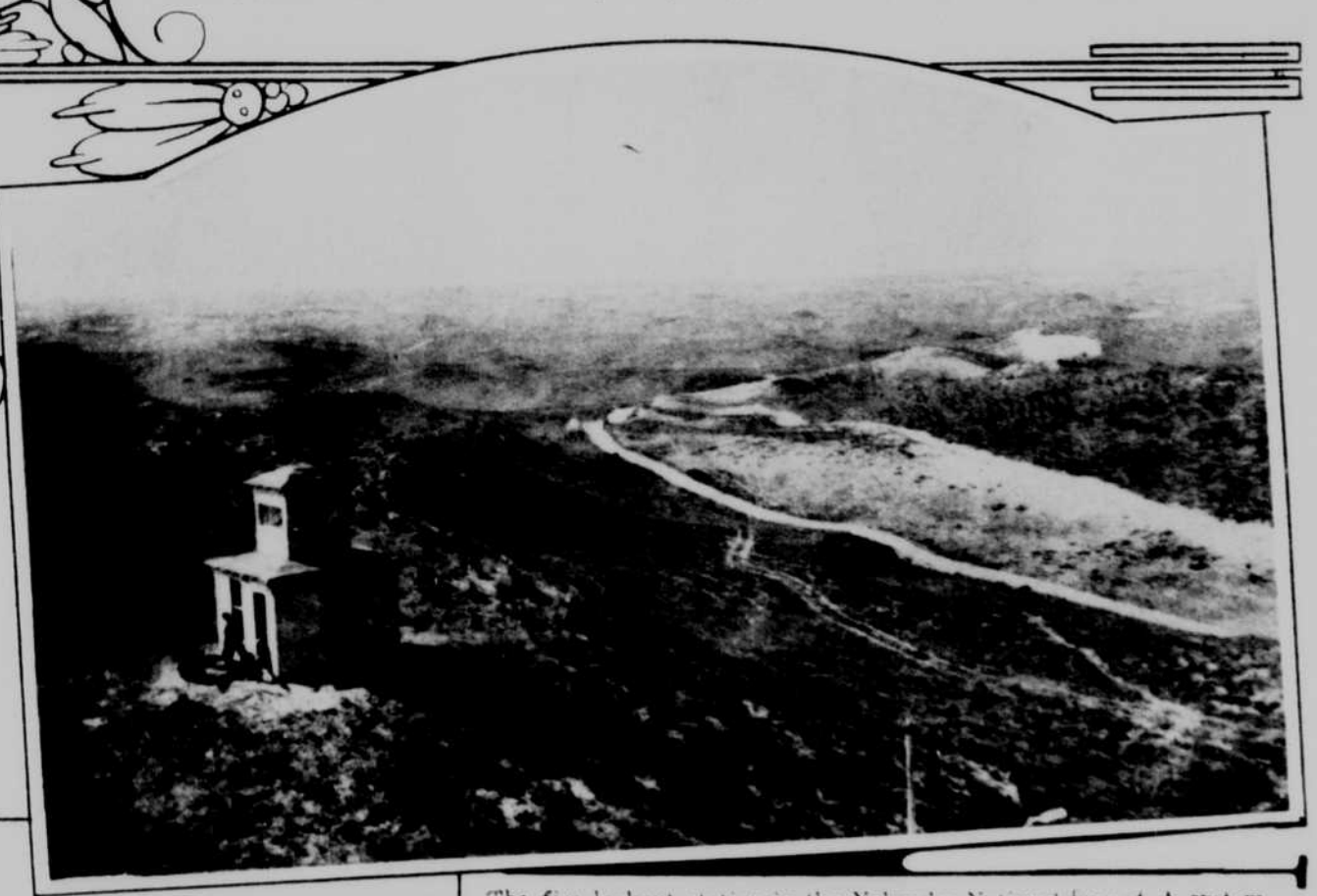


A nursery section of 3-year-old trees at the Bessey nursery. These trees are ready for digging and will be planted in the hills adjacent to the nursery.

The trees are set four feet apart in furrows which are plowed six feet apart. In an acre 1,800 trees are planted and about 1,000 acres are planted annually at the Halsey nursery.



Jackpine plantation in Nebraska National forest near Halsey.



The fire lookout station in the Nebraska National forest. A system of fire breaks serve to check any prairie fires which may start in this section.



A double row of American elm along a Nebraska highway. These trees are 29 years old and serve as an object lesson for beautifying the roads of the state.



A prairie fire. Prairie fires are nearly as common today in the sandhills as in pioneer days.