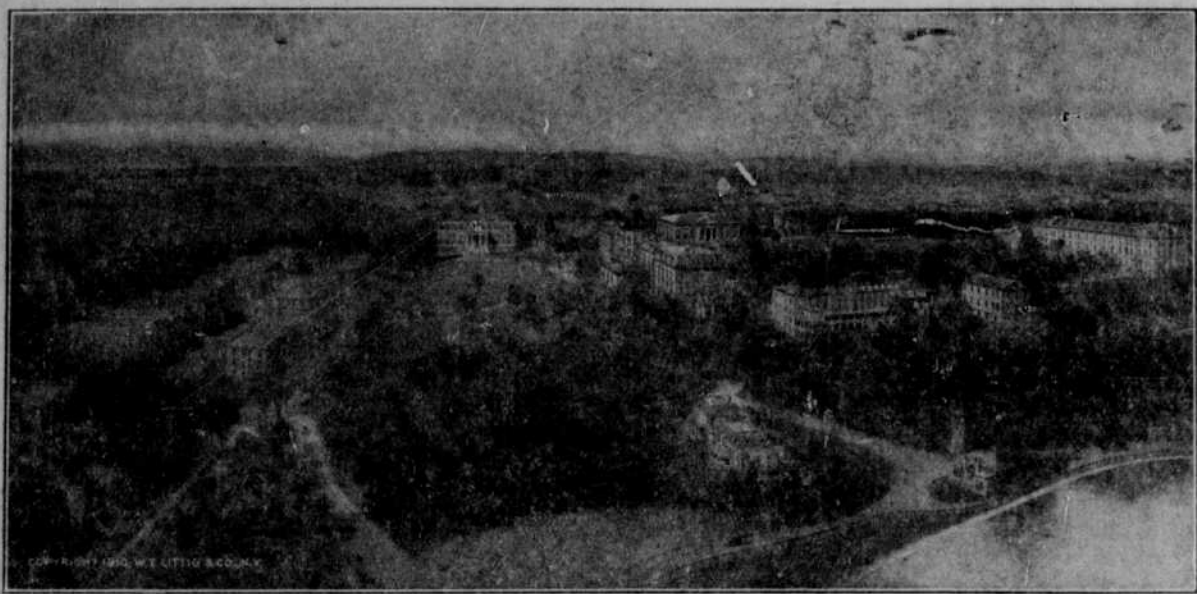


A GREAT UNIVERSITY WHICH GREW OUT OF A SMALL RELIGIOUS GATHERING



BIRDSEYE VIEW OF THE HOWARD UNIVERSITY.

A University perched on a hill overlooking the Capital of the Nation.

Howard University, situated at the Nation's Capital, was conceived in a prayer meeting for missions in the First Congregational Church of Washington, D. C., on Monday, November 17, 1866. It stands today as the capstone of Negro Education in America, having already supplied to the Nation some five thousand graduates in Medicine, Law, Dentistry, Pharmacy, Religion, and Collegiate courses, and sends out each year nearly two hundred other graduates from its various departments.

Howard University, not unlike other Universities of the land, is face to face with the post-war crave for education. The exacting discipline of army routine together with the wonders of adventure and travel did much to awaken the Negro. Never in the history of Howard University has the knock at her doors been louder. From all sections of the country—village, town and city alike—flows an endless stream of youth anxious for knowledge and an understanding of the universe in which they live.

With students from practically every

this desire, a Department of Dramatic Art was established, which department has, during the past, done much toward the elevation of the position of the Negro in the field of dramatic art. Various plays calling for exceptional dramatic powers were presented by the Howard Players, composed of students of the University, under the direction of the Department of Dramatic Art. These plays received the applause of the Washington public. In addition to this effort to show the dramatic powers of the Negro, what proved to be the greatest athletic event in the history of Negro Colleges was presented in the "Football Classic" between Howard and Lincoln Universities last year.

The years following the close of the World War have been full of problems of development for Howard. With the thirst for knowledge on the part of the awakened masses of the Negro people came the increase in the enrollment of the University and a consequent need for greater facilities at the University. Efforts were made for greater appropriations from the

ies. Money may be provided for equipping room units if desired, accommodating an average of two students, at the rate of \$75 per room, including dressers, wardrobes, bookcases, chairs, tables and two beds. Clark Hall (Dormitory for young men) can thus be refitted at a total cost of \$7,050.00. Miner Hall (Dormitory for young women) can be refitted at a total cost of \$6,825.00.

6. An additional to the Endowment Fund of at least \$1,700,000.
7. \$500,000 for the complete endowment of the Howard University Medical School. \$250,000 of this amount has been promised by the General Education Board.
8. \$60,000 for eight (8) residences for University instructors.

Howard's War Service.

The truth should be known to the nation. Every white and black man of America should know the part that Howard University played in the war. She had more graduates to receive commissions and serve as officers with colored units than any other institution in America for the

A GROWING SEAT OF LEARNING MID-CENTER THE CONTINENT.

Western University, located in Kansas City, Kansas, supplies an imperative need and fits perfectly into our modern scheme of education. The site is healthful, beautiful, sanitary, ideal.

Grounds and Buildings.
The grounds comprise 133 acres overlooking the Missouri river. The campus is "A thing of beauty", diversified with a profusion of shrubbery, beautiful flowers developed in symmetrically planned beds, trees, wide grandiose walks and bluegrass.

The seven buildings are modern brick structures, steam-heated, electric lighted and supplied by city water.

The Faculty.
The faculty consists of 33 teachers from the best institutions of learning in our country. The literary teachers are from Oberlin, Wilberforce, Howard, Drew, Radcliffe, Tabor, Lincoln University, University of Kansas, and the Kansas State Normal. The Vocational teachers are from the Kansas State Agricultural College, Hampton, Tuskegee, and Prairie View.

Stock and Poultry.
The State Board of Administration has recently supplied the school with a herd of Holstein cows, and some fine registered, pedigreed hogs.

The poultry plant is equipped with incubators, brooders, pens and runs; and has more than 4000 blooded fowls as follows: Rhode Island Reds, White Wyandottes, White Leghorns, Barred Rocks, Black Minarcas, African guineas, Tulu geese, and wild mallard ducks domesticated. The stock and poultry are used for practical class instruction, and to furnish food to the student body.

Courses Taught.
Academic, full four years Collegiate, Commercial (with practical experience in students' bank), Musical (Piano, Voice, Violin, Band and Orchestra), Cooking, Sewing, Millinery, Carpentry, Tailoring, Agriculture, Steam-Laundrying, Auto-Mechanics, Blacksmithing, Printing, Steam and Electrical Engineering, Mechanical Drawing, China Painting, Stock and Poultry Raising on an extensive scale.

The New Administration.
President F. Jesse Peck took charge of the institution September 1st, 1918, returning for the second time to its presidency after an interim of more than twenty years. His ripe scholarship, wealth of experience, power of initiative and executive ability have raised the school to a most commendable standard.

He has successfully fought for better discipline, better food in the dining room, better equipment, better salaries for teachers and employees, a central heating plant, more buildings, a larger student body, a full four years' college course with degrees, and additional trades with modern equipment and improved methods of teaching. The school is now an acknowledged, accredited institution, so recognized throughout the United States.

Vice President Shelton French has been with the school sixteen years, and is heartily supporting the president in all his undertakings.

Student Body.
The students come from almost every state in the union, Alaska, and one (Wei Sei) from the West Coast of Africa.

The enrollment last year was 511, and more than 1000 were turned away for lack of dormitory facilities which will be obviated this year by the \$45,000.00 Parks Hall.

Nurse Training.
The Douglas Hospital is under the supervision of Western University, and gives a graduate course in scientific nursing.

Theology.
The school recognizes the importance of preparing young men for the ministry, and offers the following courses in theology: Preparatory, English and Classical.

Nebraska Students.
The following students matriculated last year from Nebraska: From Omaha—Sadie Alexander, Aline Bentley, Lovetta Busch, Latta Mae Childa, Geneva Douglas, Vivian Douglas, Willa Mae Franklin, Hubert Glover, Hatie Gaston, Phil Howard, Roscoe Howard, Geraldine Houx, Neola Jenkins, James Jenkins, Roy Kellogg, Mary Ella Liverpool, Roscoe Moore, Genevieve Paris, Hazel Roulette, Roberta Robinson, Ann Robinson, Cecil Smith, Guiou Taylor, Thomas Wilson. From Lincoln—Marcus D. Adley, Solomon Nelson. From McCook—Florence Speed.

No students admitted below the first year high school, or under 14 years of age.

For catalog or further information write F. J. Peck, President, Kansas City, Kansas.

GAVE WORLD NEW DEFINITION OF NEGRO

(Continued on Page 4.)
in the Negro race, but who like Booker Washington, believes also in the white race. It is a faith not so much in what the Negro race is, as in what the Negro race may become; it is a belief not so much in the attitude of the white race to the Negro now, as in what that attitude shall be in the future. And here is the critical question on which hinges your destiny. Which leadership will you follow?

Let's Gather It In.
It is computed that the earth's atmosphere contains at least 4,000,000,000,000 tons of nitrogen directly accessible. The quantity in the air over one square kilometer of land is sufficient to enrich the earth of the whole world for twenty years at the present rate of consumption.

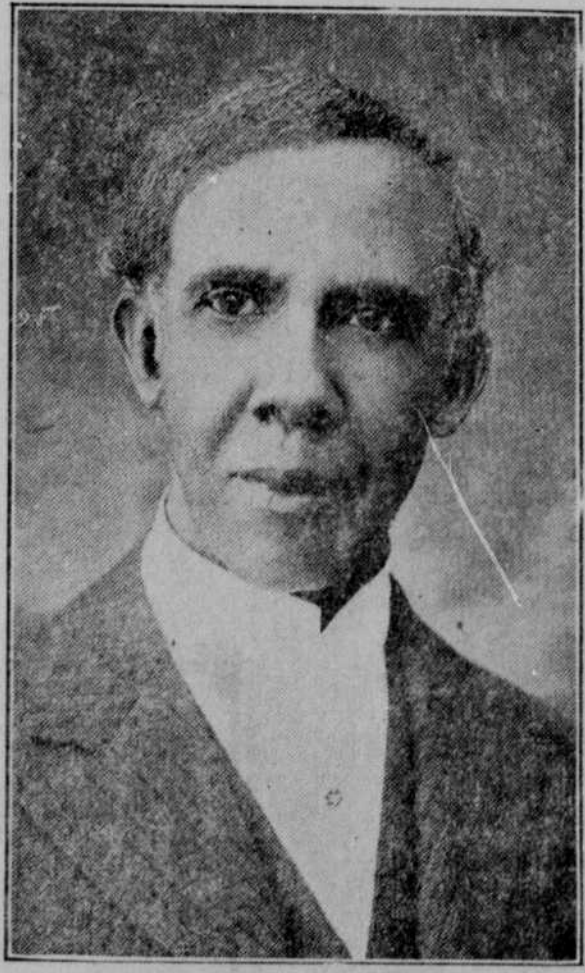


DR. JOHN K. MULLONEY, President of Meharry Medical School, Nashville, Tenn.

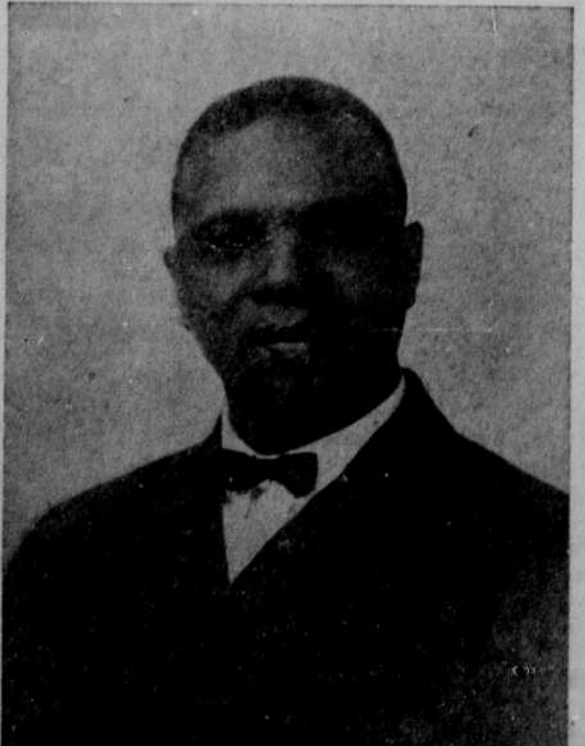
A GROWING SEAT OF LEARNING MID-CENTER OF THE CONTINENT



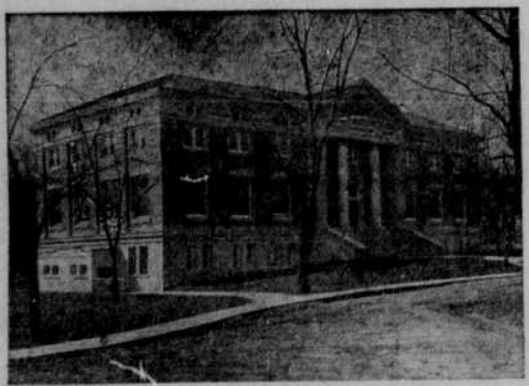
FAST TRACK TEAM.



REV. F. JESSE PECK, D. D. Founder and President of Western University. A man of broad vision and high ideals.



SHELTON FRENCH, M. A. The modest but efficient Vice-President of Western University, who is one of the great educators of the country.



THE CARNEGIE LIBRARY.

state in the Union and ten foreign countries enrolled, the Howard University attendance during the school year 1920-1921 reached the record-breaking number of 1893. This large enrollment for the year indicated the tidal wave of education. Interest. The enrollment at Howard shows an increase in every department over that of previous years. When it is remembered that Howard University has discontinued entirely all preparatory work and is now open only to students able to qualify for collegiate and professional courses, its record of attendance is an entirely new thing in the world of Negro Education and is of definitely significant import.

In scope and purpose Howard University is fast becoming a national institution. The change in administration (1918) resulted in the adoption of modern university methods and plans favorable toward development and growth. Immediately, the preparatory departments were eliminated in order to approach the true University and to encourage the establishment throughout the country of creditable high schools. The various departments, once somewhat separate in organization, are now consolidated. For the sake of cooperation, each is responsible to one administrator; for the sake of specialization, each is a unit in itself working through its immediate Dean for the highest efficiency. New departments have been added. Old departments have been stimulated. The standards of the world universities are in mind. Howard is struggling to be among the best.

Howard University has been ever alert to see that the highest phases of Negro Life are placed before the American public. In keeping with

national government and for the school year 1919-1920 Howard University was able to secure a Congressional Appropriation of Eighty-Five Thousand (\$85,000) Dollars to provide a Home Economics and Dining Hall Building, which amount was subsequently increased by a Congressional appropriation of One Hundred Sixteen Thousand (\$116,000) Dollars, thereby providing Two Hundred and One Thousand (\$201,000) Dollars for a Home Economics Building with a dining hall to accommodate 525 students.

The need of finance is forever a menace to big adventure. Golden is the blow that turns fanciful thoughts into stern realities. The problem of the University then is one of securing funds for immediate use and endowment for permanent investment. Centrally located, eager to accomplish the task of leadership, Howard University faces as her greatest enemy the need of money. She needs friends who will help in her program of development. Among the needs of the University are:

1. \$75.00 per year to cover incidental fees, etc., (tuition) of a student for a year.
2. \$2,000.00 for permanent scholarships.
3. Contributions for current expenses in any amounts, however small.
4. Special contributions for the purpose of modernizing and equipping University class rooms, amounting to \$7,500 (\$300, approximately will equip a class room).
5. Special contributions for the purpose of replacing furniture which has outlived its usefulness in Young Men's and Young Women's Dormitories.



ADMINISTRATION BUILDING.

training of Negro youth. The complete facilities of the University were placed at the disposal of the Government. National Army Training Detachments, Students' Army Training Corps and Reserve Officers Training Corps units were trained at the University. The Student Army Instruction Camp for seventy (70) colored institutions of learning was also conducted here. In all, 1786 men were trained for war work. This is the type of service that Howard University offered the country during the World War.

Today Howard University's desire for training manhood and womanhood for service is deeper. She has assumed a new leadership and has attained, as has been aptly said, a new conception of her mission, through aiming practically and deliberately at meeting the national demand in race leadership, and thus fulfilling her proper duty and mission as the national institution for the higher and professional education of the Colored youth.

MEHARRY MEDICAL AND DENTAL COLLEGE.

One of the unique educational institutions of the country which has contributed in an unmeasurable degree to the advancement of the colored American is the Meharry Medical College advantageously located at Nashville, Tenn. This splendid institution, over which Dr. George W. Hubbard, so ably presided for forty-six years, retiring as president emeritus, February 1, 1921, has graduated 2,467 in medicine, 479 in dentistry, 284 in pharmacy and 80 in nurse training. The graduates of Meharry have done excellent work wherever they have gone.

Dr. John K. Mulloney, who has succeeded Dr. Hubbard, as president, was born in England forty-two years ago, but was reared and educated in the United States. He is full of vigor and well equipped by training and experience to put Meharry in the forefront of medical colleges in this country.

Among Omaha's many successful physicians the majority received their training at Meharry. Meharry is popular with Omaha students as several are pursuing their studies there.

In a Class by Himself.
Miss Passay—"My fiance is so different from other men." Miss Pert—"Of course he is, since he has proposed to you."—Boston Transcript.



PIANO PRICES

Cut to Rock Bottom

Our \$50,000 remodeling piano sale is the piano treat of the year. Over 200 high grade instruments have been reduced in price so greatly—the terms have been made so reasonable that any prospective piano buyer will readily realize the bargains.

New Player Pianos



Sale Price **\$385**
\$600 Player Pianos reduced to
Terms—\$2.50 Per Week

New Upright Pianos



Sale Price **\$265**
\$450 Upright pianos reduced to
Terms—\$1.50 Per Week.

A Few Exceptional Bargains in Used Pianos

- Sterling Upright \$155
- Marshall & Wendell Upright \$125
- Valley Gem Upright \$175
- Richter Upright \$225
- Vose & Sons Upright \$238
- J. & C. Fischer Upright \$225

Don't let anything keep you away from this Sale. Write, call, phone. Get in touch with us. We ship anywhere.

Schmoller & Mueller
1514-16-18 Dodge St. Phone Duong 1623

DAN DESDUNES BAND

Of whom Gen. Pershing said: "One of the best trained bands I have ever heard."

Wm. Lewis, Mgr.
2014 N. 24th St. Omaha



OMAHA

Co-Operative Clothing Company

Between M and N on So. 24th St.

South Omaha's Largest Clothing Store

Formerly

NEBRASKA SHOE and CLOTHING HOUSE