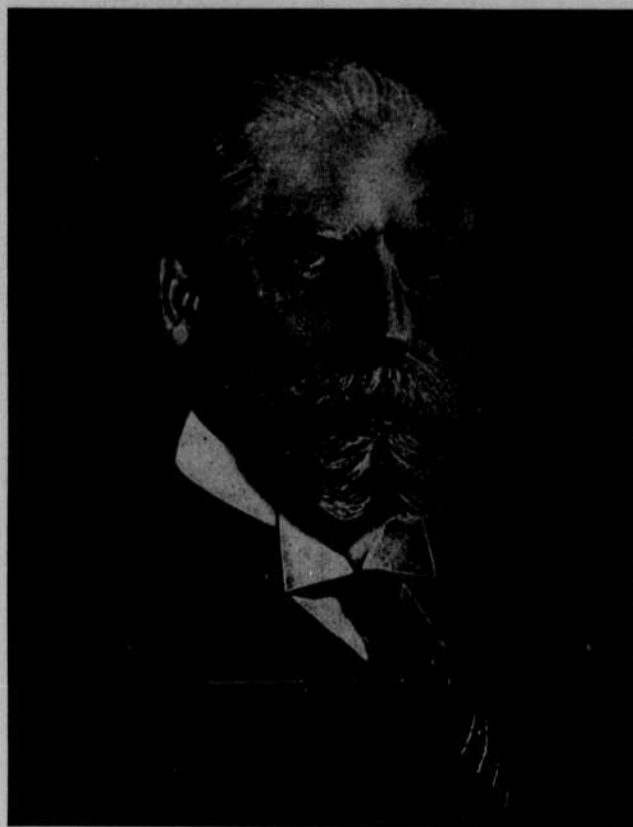


To Maintain Republican Doctrines VOTE FOR REPUBLICANS

FOR PRESIDENT



CHARLES E. HUGHES

The Republican Party and candidates, from President down, believe in human rights and the protection of all citizens, no matter what their nationality, color, age or sex, wherever they may be.

To maintain these doctrines, you must elect Republicans to office.

They are experienced, capable, honest.

They will run the Country's business efficiently and economically.

They will treat you fairly and courteously.

Vote for all of them.

Douglas County Ticket

FOR CONGRESS

To Represent Second District...BENJAMIN S. BAKER

FOR STATE SENATORS

| | |
|----------------------|---------------------|
| H. J. HACKETT | JOHN M. MACFARLAND |
| BERT C. MINER | CHARLES L. SAUNDERS |
| FRANKLIN A. SHOTWELL | |

FOR STATE REPRESENTATIVES

| | |
|---------------------|------------------|
| JAMES ALLAN | JOHN LARSEN |
| J. F. BURGESS | NELS A. LUNDGREN |
| JOHN W. COOPER | JOSEPH SHERMAN |
| ROBERT C. DRUESADOW | P. J. TRAINOR |
| HARRY A. FOSTER | JAMES WALSH |
| SAM G. HOFF | G. R. YOUNG |

FOR COUNTY OFFICERS

| | |
|---|------------------|
| Sheriff..... | MICHAEL J. CLARK |
| Clerk of District Court..... | ROBERT SMITH |
| Treasurer..... | EMMET G. SOLOMON |
| Attorney..... | HENRY C. MURPHY |
| County Clerk..... | FRANK DEWEY |
| Assessor..... | W. G. SHRIVER |
| Surveyor..... | LEWIS E. DAVIS |
| Superintendent of Public Instruction..... | W. A. YODER |
| County Commissioners..... | FRANK C. BEST |
| | A. C. HART |
| Public Defender..... | W. N. JOHNSON |

FOR OMAHA OFFICERS

| | |
|---------------------------|-------------------|
| Police Magistrate..... | CHARLES E. FOSTER |
| | HARVEY W. REED |
| Water Board..... | R. B. HOWELL |
| Justice of the Peace..... | H. H. CLAIBORNE |

How to Vote

At the top of the first column on the ballot you will find two proposed amendments to the Constitution, one of these is the Prohibitory Amendment. Vote on these amendments as you please.

After you have voted on the amendments, no matter whether you vote wet or dry, then put an X in the REPUBLICAN PARTY CIRCLE, which is the second circle, and then give your ballot to the Clerk.

Voting the Republican ticket is neither voting for or against prohibition. It will secure honest, economical officials and a government that will treat you fairly and protect you always.