

HOW TO PREVENT WORMY APPLES

Spraying Death to Codling Moth.

(By R. F. Howard, Department of Horticulture, University of Nebraska.)

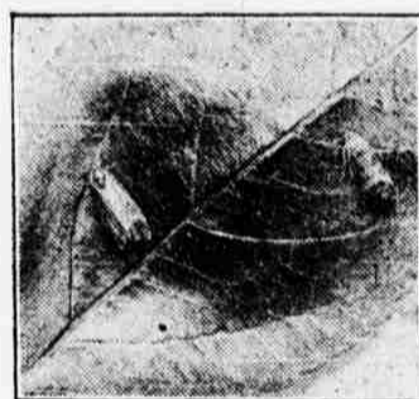
The codling moth has reached such a stage of development in Nebraska that it is no longer possible to grow apples free from worms without the trees are given some care. One may expect neglected trees to have anywhere from 20 to 85 per cent wormy



Codling Moth Eggs on Upper Surface of the Leaf.

fruits. Half of the crop may drop before it reaches maturity and the greater part of the remainder will be rendered unfit for market by the codling moth worm.

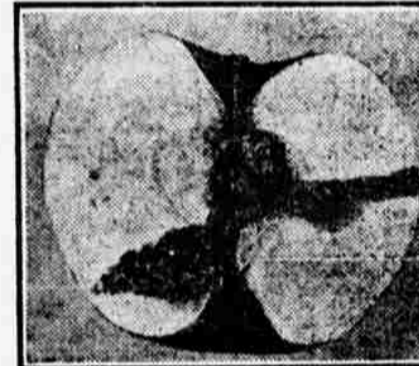
Spraying with some sort of arsenical poison is the only feasible way of controlling the codling moth. Arsenate of lead may be used at the rate of two pounds per fifty gallons of water. The first application should be given as soon as the flowers begin to drop, the second about three weeks later, and the third about the 20th of July. The first application should be direct-



ADULT CODDLING MOTH.

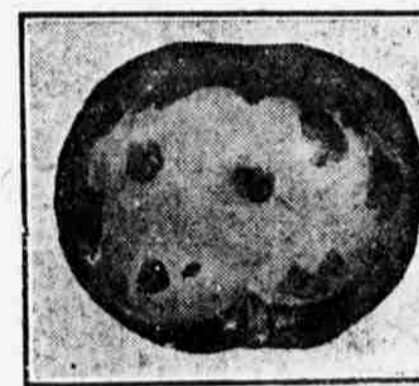
ed downward in order to get the poison into the calyx cups. High pressure is essential for the first spraying, though the department demonstrated in a Columbus orchard last summer that it was possible to control the worms to 5 per cent with a hand barrel outfit by doing the work thoroughly.

Apple scab is the most troublesome fungous disease we have in Nebraska apple orchards. It begins growth in the early spring and causes a scaly, brown growth on the outer surface



WORK OF CODDLING MOTH WORM

the apples. Some of our prominent varieties, like the Jonathan and Wine-sap, are particularly susceptible to this disease. Either Bordeaux mixture or one of the commercial lime-sulphur sprays may be used in preventing its development. Bordeaux mixture can be made by using four pounds of fresh stone-lime, four pounds, blue-stone and fifty gallons of water. Slack the lime in a small quantity of water, dissolve the blue-stone, dilute each with twenty-two gallons of water and pour together. The lime-sulphur spray can be made by using four pounds of fresh stone-lime, four pounds, blue-stone and fifty gallons of water. Slack the lime in a small quantity of water, dissolve the blue-stone, dilute each with twenty-two gallons of water and pour together. The lime-sulphur spray can be made by using four pounds of fresh stone-lime, four pounds, blue-stone and fifty gallons of water.



APPLE AFFECTED BY SCAB.

form and all that is necessary to prepare them for use is simply to add about thirty gallons of water (this will depend upon the brand used) to one gallon of the concentrated.

Spray first for apple scab just before the individual flower buds open; second, as soon as the flowers begin to fall; third, three weeks after the flowers fall. Since the second and third application for apple scab come at the same time as the first and second application for codling moth, the arsenate of lead can be added to the Bordeaux or lime-sulphur, thus reducing the labor to half.

More Champagne Riots. Eprenay, April 15.—Following a day of calm, violent rioting again occurred late last night in the disturbed champagne region. At Treppal a mob of wine growers sacked the houses of

two wine merchants and destroyed the furniture, with which they erected barricades in the streets. Troops sent to quell the disturbances were greeted with a shower of broken bottles, but the soldiers, charging with drawn sabers, dispersed the rioters.

Junction News.
Harry Witt arrived home from Missouri Valley yesterday and resumed his position in the shops as store-keeper.

LAWYER SMASHES A WILL.

It Was on Wax Phonograph Cylinder, and He Fell Carrying It.

After living in expectancy for five years hours of Hudson Burton are doomed to disappointment by the awkwardness of a lawyer.

Before his death over five years ago Burton took the novel method of telling where his wealth was hidden by talking into a phonograph and having the record filed away with his will in a lawyer's safe, where it was to remain for five years.

His wish was complied with and recently the heirs met to hear what the phonograph had to say.

When they were all gathered in the parlor the arrival of the lawyer with the record was announced. He entered the house and unwrapped the precious article in the kitchen. As he stepped through the door into the room where the heirs were he tripped over a footstool, fell and broke the record into so many pieces that it was impossible to get it to say a word.

School Notes.
Nadine Cole has been suffering from an attack of appendicitis.

The baseball team went to Stanton today.

Ray Lobdell has been ill for the past few days.

The chief event of the coming week will be the Elson art exhibit in the high school building on Wednesday, Thursday and Friday. Programs will be given each evening. The German club will render a program on evening consisting of short plays and music. The children of the grades furnish the program for another evening, and Miss Alice Howells of the University of Nebraska is expected to give readings on Friday evening. The proceeds of the exhibit will go toward buying pictures for the grade buildings in the city.

Practice is steadily progressing for the opera, "The Countess of Tivoli," to be given the 5th of May by the grades. Those in charge are very much pleased with the results of the practice and the entertainment promises to be extremely good.

Tickets for the senior play, which may be exchanged at the News office for reserved seat tickets will be on sale by members of the senior class early next week.

Harold Morrison, 10, of the state university, was a high school visitor Friday.

Clarence McWhorter, member of the ninth A. class, has been out of school for the past two weeks. He has been holding a job at the round-Ed Mullen announces that the prospects look good for the launching of his motor boat "Ruth" Sunday morning, and also that the sugar factory dam will be the end of his first trip if nothing out of the ordinary happens in the line of good weather. Mr. Mullen says that he believes the boat will make a better time this season than ever before, and she held the record for speed in 1909 in Norfolk.

Fred Hellerman has returned from his month's vacation, which he spent in the southern states. For a week Mr. Hellerman visited with friends in Frantics, Tex., where Dr. and Mrs. J. H. Mackay of this city are making their home. Mr. Hellerman reports that Dr. Mackay has constructed a building at Frantics and will soon open up a drug store. At San Antonio, Mr. Hellerman says, there is not very much war talk.

Norfolk Boy Now an Evangelist.
Evangelist Albert Miller, who delivers the opening sermon at the seventeenth annual convention of the Fourth district Nebraska Christian Missionary society, Monday evening, is no stranger in Norfolk, having received his education in this city under the direction of J. L. Stine, formerly pastor of the local Christian church and once principal of the Hartington, Neb., schools.

Mr. Miller is probably the youngest evangelist in the state to deliver sermons in two languages. He is now about 19 years old, and at the age of 17 delivered sermons at evangelistic meetings in different parts of the state.

Mr. Miller, although claiming Wayne, Neb., as his home, really belongs to Norfolk. The story of this young evangelist is a unique one. About fourteen years ago he came from Germany with his parents and located in Minnesota, where his father died a few years later. At the age of 15, the boy was sent by his stepfather, M. Wilke, to the Deutsche Pacific hotel in Norfolk, where his sister, now Mrs. John Steinhauer of West Point, was engaged as a waitress. He was put to work as a dishwasher.

He studied after working hours at the German Lutheran schools and later became interested in the Christian church, where he was confirmed. He acquired knowledge of the English language and was soon the leader of the choir. It was at this time that Mr. Stine became interested in the boy, who became an apt pupil. Today he is preaching at evangelistic meetings in both German and English. He sings and delivers sermons in both languages.

SATURDAY SIFTINGS.

Mrs. Edward Fix has gone to Wagner, S. D.

Prairie of Battle Creek was a visitor in the city.

Miss Belle Gillespie of Madison was in Norfolk Saturday.

Miss Florence Edwards of Ainsworth and Miss Mabel Bouton have accepted positions at the Bee Hive store.

M. Hunter went to Newport to

address the teachers' association Saturday evening.

O. E. Pendle, claim agent of the Northwestern railroad, was in the city transacting business.

Lowell Erskine and H. M. Morrison are home from the state university to spend the Easter holidays.

The Misses Myrtle Fisher, Leilah Scott and Lila Williams are home to spend Easter vacation with their parents from St. Mary's academy at O'Neill.

The W. C. T. U. will meet with Mrs. Beebe Tuesday afternoon at 2:30. E. G. Edwards has moved from 116 Indiana avenue to South Sixth street.

An elegant table for the use of the members of the board of education has been placed in the superintendent's office in the high school building.

F. E. Harrison of O'Neill has moved to this city and rented the cottage at 109 North Eighth street.

R. E. Lang, formerly of Lincoln, has accepted a position with the Norfolk Transfer and Storage company.

Ralph Luskart was in the city and has ordered the household goods of R. E. Luskart shipped to Herrick, S. D.

Jess Lakey has moved to Elgin, Neb., where he has accepted a position in a confectionery store as baker. One of the Norfolk Van and Storage company's horses is slightly cut about the legs and thighs as the result of running away and being tangled up in a harrow yesterday.

A heavy signpost holding two large telephone signs, in front of the Pacific hotel, was blown across the sidewalk by the heavy wind Friday afternoon. No one was injured.

The order of the temple was conferred upon Superintendent of Schools J. H. Kemp of Wayne Friday evening at a special meeting of Damascus Commandry No. 20. A banquet was held after the meeting, during which addresses were delivered.

The remains of Mernie Best, the month-old son of Mr. and Mrs. E. E. Best, were interred yesterday in Prospect Hill cemetery. The funeral was held at the home, 1207 Park avenue, Rev. J. W. Kirkpatrick of the Methodist church in charge.

Steady progress is being made in the construction of the Norfolk Oil and Chemical company's building north of the city. The basement, or lower floor, has been about completed and the workmen have commenced operations on the second floor.

Fresh vegetables are now getting common in Norfolk. New potatoes from Bermuda; lettuce and radishes from Council Bluffs; tomatoes and beans from Texas; cucumbers from Illinois and strawberries from Louisiana have a good market here.

Although quite weak from his long confinement during which he suffered with a severe attack of rheumatism, Tom C. Grant, the traveling salesman, was taken to his home at Murdo, S. D., Friday afternoon by H. L. Webb, a brother traveling salesman of Aberdeen, S. D.

Notwithstanding the fact that the Norfolk ball team's efforts to secure a crowd of ball fans to attend their business meetings, the members of the team have arranged a meeting on the driving club diamond Sunday afternoon for an official workout. A lineup is to be announced soon.

Ed Mullen announces that the prospects look good for the launching of his motor boat "Ruth" Sunday morning, and also that the sugar factory dam will be the end of his first trip if nothing out of the ordinary happens in the line of good weather.

Mr. Mullen says that he believes the boat will make a better time this season than ever before, and she held the record for speed in 1909 in Norfolk.

Fred Hellerman has returned from his month's vacation, which he spent in the southern states. For a week Mr. Hellerman visited with friends in Frantics, Tex., where Dr. and Mrs. J. H. Mackay of this city are making their home.

Mr. Hellerman reports that Dr. Mackay has constructed a building at Frantics and will soon open up a drug store. At San Antonio, Mr. Hellerman says, there is not very much war talk.

Among the day's out-of-town visitors in Norfolk were: Mr. and Mrs. J. B. Jones, Creighton; W. L. Stanton, Meadow Grove; Mr. and Mrs. Ole Gra-rider, Herrick; Mrs. J. A. Burron, Cole-ville; R. C. Patrick, Pierce; A. W. Abern, Wayne; A. R. Davis, Wayne; Martin Ringer, Wayne; G. A. Eberly, Stanton; P. L. Best, Stanton; E. F. Brunner, Tilden; H. F. Harms, Phil-ger; J. H. Kemp, Wayne; Charles Nelson, Niobrara; G. Cramer, Niobrara; L. Jones, Niobrara; H. H. Hahn, Wayne.

The report of the Norfolk board of charities shows that the board is making good, in caring for deserving people. One instance shows where it will save the citizens a good many dollars in the course of a year. A family moving through the city were soliciting among the business men for aid. They were directed to the board of charities and given sufficient money for medicine and provisions on condition they did not solicit any further aid for the citizens. The board needs the hearty co-operation of every citizen in Norfolk.

WORKING TO SAVE LIVES.

Northwestern Railroad Local Committee Holds a Meeting.
There was an increase of nine passengers killed during the year, according to the report of the Northwestern railroad's safety-for-employees committee. While an increase is shown in the passenger deaths, the decrease in other deaths, injuries, etc., is 1,177. This is considered a very good showing, according to many railroad men. R. C. Richard, chairman of the central safety committee and originator of the committee, is being highly complimented on the work of this organization.

There are three branches of this organization—a local branch, which is changed every six months; a division

committee, and a central committee, which meets in Chicago. The local committee reports to the division committee all necessary repairs for the safety of both passengers and employees. What this committee cannot do on its own is turned up to the central committee. So precise is the war on all dangerous obstructions by these committees, that even a nail sticking out of a board on a platform is reported.

General Superintendent S. M. Braden of this city, and the originator, R. C. Richards, are members of the central committee. The members of the division committee are: Superintendent C. H. Reynolds, Norfolk; E. O. Mount, Fremont; M. E. Pangle, J. Stafford, sr., Norfolk; M. T. Crook, Scribner; O. F. Freedman, L. Bergland, Fremont; A. J. Colwell, J. H. Fuest, E. Williams, J. W. Dietrick, S. C. Graham, F. L. Burrell, M. B. Golden, Norfolk; Joe Shalda, Fremont.

The local committee for six months is: M. E. Pangle, P. J. Stafford, sr., F. Ellerbrock, G. L. Barney, J. A. Wil-son, C. H. Baker, E. T. Nicholas, A. P. Larsen, Fred Linerode, G. F. Young, J. C. Spelman, J. W. Dietrick, William Denton.

Every branch of the service is represented in the local and division committees. The local committee held a meeting at the Junction Saturday afternoon.

Verdigre Farmer Hurt.

W. O. Wittich, 40 years old, a farmer living near Verdigre, is suffering from a broken arm as the result of being struck by the rear tank wheels of a Northwestern engine, which he endeavored to board at 4 o'clock Thursday afternoon.

Wittich started to climb into the cab of the engine where he intended to make his stay for a ride. The engineer ordered him off and he was struck by the rear wheels, probably because he was standing too close to the engine.

Would Desert His Wife.

Mountain Grove, Mo., April 15.—D. J. Wyrich, a wealthy bachelor, went from here to Omaha two weeks ago and married Mrs. Clara Adair, a grass widow. Last week he brought her here and took her out to his 1,200-acre ranch. Yesterday he brought her to town and left her at the Palace hotel. An hour later he notified the proprietor that he would not be responsible for her board. Then she got busy with a lawyer. A warrant for his voluntary abandonment has been made to the prosecuting attorney by Mrs. Wyrich. Friends say Wyrich had known the woman three years before marrying her. Wyrich refuses to talk about the matter.

Commissioners' Proceedings.

Madison, Neb., April 11, 1911, at 1 p. m.—Board met pursuant to adjournment. Present Commissioners John Fitch, Burr Taft and Henry Sunderman.

John W. Fitch, who was duly appointed county commissioner according to law and qualified as such, took his place on the board of commissioners for commissioner district No. 1, to fill vacancy caused by the death of John Malone and under the law is chairman of the board.

Minutes of meeting of March 14, were read and approved as read. The time having arrived for the opening of the bids for erection of addition to county jail, the following bids having been filed with the county clerk according to advertisement were opened, examined and compared, William J. Gores and W. H. Craig. The bid of J. B. Herman not being filed with the county clerk until after the time specified and not being accompanied by a certified check as required by the board, also the bid of W. H. Beckenhauer not being filed until after the expiration of the time specified in the advertisement, were not considered.

Upon comparison the bid of W. H. Craig being considered the lowest and best bid and on motion the contract was awarded to said W. H. Craig.

On motion the clerk was instructed to correct the 1910 tax list by striking out the poll tax assessed in Norfolk city against C. A. Seavall on account of his having paid poll tax for said year in Kansas.

John Crook, member of the soldier's relief commission, made report of money received and expended during the year, which report was on motion approved and ordered filed.

On motion H. F. Barney, chairman of the soldiers' relief commission, was allowed for use of commission the sum of \$100.00.

On motion the county clerk was instructed to correct the 1908 tax list by striking out the personal tax of Schumann Drug Co. in Madison city for said year of \$57.35, on account of erroneous assessment.

On motion the county clerk was instructed to correct the 1910 tax list by striking out the personal tax of E. E. Evans of \$2.50 in Norfolk city on account of double assessment.

On motion the clerk was instructed to correct the 1910 tax list by striking out the personal tax of W. A. Beckenhauer, Norfolk city, of \$6.46 on account of double assessment.

The resignation of Daniel E. Anderson, Assessor of Emerrick precinct, was read and on motion accepted.

P. W. Ruth, county assessor, appointed W. H. Reeves precinct assessor for Emerrick precinct, such appointment was on motion confirmed by the board.

The resignation of H. C. Jensen as county surveyor was presented and on motion accepted.

On motion the county clerk was instructed to correct the 1910 tax list by striking out the personal tax of E. E. Evans of \$2.50 in Norfolk city on account of double assessment.

On motion board adjourned to meet at 7 o'clock, p. m.

April 11, 1911, 7 p. m.
Board met pursuant to adjournment. Present Commissioners Fitch, Taft, and Sunderman.

John F. Dederman presented and filed the following petition and bond before the board of county commissioners of Madison county, Nebraska:

To the Honorable Board of County Commissioners of Madison County, Nebraska:

Your petitioner, John F. Dederman, respectfully represents to your honorable board that he is now the owner of and in possession of the following described real estate, situate in the county of Madison, and state of Nebraska, to-wit:

The west half of the northeast quarter of section twenty-five (25), in township twenty-four (24), north in range two (2), west of the sixth principal meridian; that the general location of the said described land and the south half of section twenty-five (25) of said township and range, and sections thirty (30), and thirty one (31), of township twenty-four (24), north range one (1), west of the sixth principal meridian, is

such, that a great volume of water accumulating through natural water courses in the eastern portion of township twenty four (24), in range two (2), west of the sixth principal meridian, is deposited along the public highway north of section twenty five (25) in township twenty four (24), north in range two (2), west of the sixth principal meridian where it seriously interferes with travel over said highway and at times renders said highway impassable, while water standing in ditches along the sides of said highway becomes stagnant, and a menace to the health of persons living in that vicinity, and people traveling said highway; that in addition to accumulating on said highway and in said ditches, water derived from said water courses as aforesaid, flows down through the north half of said section twenty five (25), into and through the south half of said section and into sections thirty (30) and thirty one (31) aforesaid, a portion thereof remaining standing in sloughs in the south half of said section twenty five (25) and in said sections thirty (30) and thirty one (31), where it is constant menace to the health of persons living in the vicinity and renders unprofitable and greatly detracts from the value of said land; that a drain or ditch could be so constructed that it would afford and outlet for said water and drain said highways and said land so that there would be no stagnant water thereon and travel upon said highway would not be interfered with by reason of said overflowing and accumulation of water as aforesaid; that it is necessary for such ditch or drain to be constructed for the reason that there is now no natural outlet for said water, and the construction of such ditch or drain will be conducive to the public health, convenience, and welfare.

Your petitioner therefore prays your Honorable Board that there may be located and constructed in accordance with the provisions of chapter 15 of Cobby's Annotated Statutes of Nebraska of the year 1909, a ditch or drain commencing at the northwest corner of the northeast quarter of section twenty five (25), in township twenty four (24), north in range two (2), west of the sixth principal meridian, running thence south one half mile, thence east one hundred rods (100), thence south sixty (60) rods, thence east thirty rods (30), thence south fifty five rods (55), thence in a southeasterly direction to a point twenty rods east of the north west corner of the northeast quarter of the northwest quarter of section thirty one (31), in township twenty four (24), north in range one (1), west of the sixth principal meridian, thence in a southeasterly direction about forty rods (40), to a natural water course commencing on the northwest quarter of said section thirty one (31), and emptying into the Elkhorn river in the south part of said section, which said ditch or drain will drain all of said land and said highway into the Elkhorn river.

Wherefore your Honorable Board is respectfully requested to take such proceedings as may be necessary and proper for the establishment of such ditch or drain, and the proper apportionment of all costs and expenses thereof between your petitioner and the county of Madison, state of Nebraska, and any and all other persons and companies and corporations who will be benefited by such ditch or drain.

Your petitioner herewith presents a bond, conditioned for the payment of all costs that may occur in case said board of county commissioners find against said improvement.

John F. Dederman,
State of Nebraska } ss.
Madison County }

John F. Dederman, being first duly sworn on oath deposes and says, that he is the petitioner above named, that he has read the foregoing petition and knows the contents thereof, and that the statements and allegations therein contained are true as he verily believes.

John F. Dederman,
Subscribed in my presence and sworn to before me this 11th day of April, A. D. 1911.

W. H. Field, Clerk of the District Court of Madison county, Nebraska.

BOND.
Before the board of County Commissioners of Madison County, Nebraska:

Know all men by these presents: That whereas, John F. Dederman has filed his petition before the board of county commissioners of Madison county, Nebraska, asking the said board to locate and construct a ditch or drain from a certain point at the northwest corner of the northeast quarter of section twenty five (25) in township twenty four (24), north in range two (2), west of the sixth principal meridian running thence south one half mile, thence east one hundred rods, thence south sixty rods, thence east thirty rods, thence south fifty five rods, thence in a southeasterly direction to a point twenty rods east of the northwest corner of the northeast quarter of the northwest quarter of section thirty one (31), in township twenty four (24), north in range one (1), west of the sixth principal meridian, thence in a southeasterly direction about forty rods to a natural water course commencing on the northwest quarter of said section thirty one 31, and emptying in the Elkhorn river, in the south part of said section, on the ground that the said ditch or drain will be conducive to the public health, convenience and welfare and a benefit to individuals owning land in the vicinity of said ditch or drain to be established.

Now therefore, we, John F. Dederman, as principal, and A. E. Craig and E. T. Fenske as sureties, do promise and undertake to the county of Madison, state of Nebraska, and to the board of county commissioners

of said county, that we will pay all costs that may accrue in all proceedings legally had under and by virtue of said petition in case said board of county commissioners find against the improvement prayed for in said petition.

In witness whereof we have hereunto signed our names this 11th day of April, 1911.

John F. Dederman,
Witnesses: A. E. Craig
W. H. Field, E. T. Fenske,
(Seal.)

The above bond and sureties thereon are approved by me this 11th day of April, 1911.

S. R. McFarland,
County Clerk.

On motion the following bills were allowed:

A. W. Finkhouse, fees Conway case \$ 2.40
C. F. Eiseley, fees Conway case 3.35
C. F. A. Margardt, fees Con-Donald case 2.10
C. F. A. Margardt, fees McDonald case 2.60
W. S. O'Brien, fees McDonald case 2.90
C. F. Eiseley, fees McDonald case 3.65
C. F. Eiseley, fees Shannon case 3.65
James Nichols, 1st quarter salary and office rent 230.00
James Nichols, office rent for April 10.00
Salter Grain & Coal Co., coal for paupers 61.55
N. A. Housel, postage etc. 17.18
N. A. Housel, salary 116.67
Loonan Lumber Co., coal for court house 115.20
Gus Kaul, salary for March 50.00
J. W. Best, auto hire 6.00
Huse Publishing Co., supplies 353.90
Huse Publishing Co., printing Madison Telephone Co., tolls and rent 39.70
C. S. Smith, salary and fees 329.23
S. R. McFarland, recording bonds and making assessors books 37.70
S. R. McFarland, postage etc. Farmers Mercantile Co., supplies for pauper 14.70
Farmers Mercantile Co., supplies for court house 1.50
University Publishing Co., supplies for county superintendent 5.00
H. B. Allen supplies 170.25
Madison City, water rent for Jall Oct. to March 20.45
S. M. Dowling, bailiff fees 22.75
A. B. Lang, meals for jurors 7.20
W. H. Field, 1st quarter salary 100.00
Burr Taft, labor and mileage 64.20
F. L. Wiedgreen, rent for pauper 32.90
Pat Turner, freight on scraper Mallory & Jewett, supplies for pauper 19.00
Ernest Fenske, stock food for poor farm 14.00
U. D. Mathews, livery for Sept. W. H. Field, fees to be paid to jurors 6.00
Wm. Lobus, care of Mrs. Stehr, Jan. 21 to Feb. 11, 1911 12.50
Irvin & Melcher, supplies for pauper 10.55
J. M. Smith, salary and board-ing prisoners 149.25
Henry Sunderman, labor and mileage 56.95
Ed Voss, draying 7.25
W. H. Field, witness fees for distribution 134.65
A. E. Gadbols, attending pauper S. R. McFarland, salary for Jan., Feb., March, and April Diers Bros., supplies for court house 3.95
August Pasewalk, repairs on grader 4.75
Wm. Bates, fees state cases 25.15
A. W. Finkhouse, fees, Shan-non case 5.40
Hume-Robertson-Wycoff Co., lumber for R. D. No. 9 28.28
Hume-Robertson-Wycoff Co., lumber for bridges 7.55
Hume-Robertson-Wycoff Co., lumber for R. D. No. 15 8.30
Hume-Robertson-Wycoff Co., lumber for R. D. No. 10 20.88
Thomas Reigle, work R. D. No. 10 44.00
Hume-Robertson-Wycoff Co., lumber R. D. No. 14 40.32
Hume-Robertson-Wycoff Co., lumber for bridges 2.90
Gust Machmueller, work R. D. No. 1 54.25
John Brosch, dragging road, C. D. No. 3 6.30
Frank Schinkus, lumber for bridges 14.00
L. B. Baker, lumber for R. D. No. 1 11.15
John Friday, hardware for R. D. No. 1 6.75
Wm. Clasey, jr. grading C. D. No. 3 14.00
Howard Miller Lumber Co., lumber for bridges 172.98
Ed Uecker, work R. D. No. 4, claimed \$4.64, wholly disallowed as not a proper charge against the county.

M. J. Rooney, work C. D. No. 2 20.00
Joseph Lampe, work C. D. No. 2 2.50
J. G. Pollock, for floating roads 100.00
Jos. Maloney, hauling bridge lumber 16.20
John Haggemeier, bridge work August Wille, bridge work 6.00
Henry Haggemeier, bridge work 3.00
C. H. Fenske, bridge work 2.25
Albert Kirstine, work R. D. No. 10 9.00
On motion board adjourned to meet at 7 o'clock, p. m.

April 11, 1911, 7 p. m.
Board met pursuant to adjournment. Present Commissioners Fitch, Taft, and Sunderman.

John F. Dederman presented and filed the following petition and bond before the board of county commissioners of Madison county, Nebraska:

To the Honorable Board of County Commissioners of Madison County, Nebraska:

Your petitioner, John F. Dederman, respectfully represents to your honorable board that he is now the owner of and in possession of the following described real estate, situate in the county of Madison, and state of Nebraska, to-wit:

The west half of the northeast quarter of section twenty-five (25), in township twenty-four (24), north in range two (2), west of the sixth principal meridian; that the general location of the said described land and the south half of section twenty-five (25) of said township and range, and sections thirty (30), and thirty one (31), of township twenty-four (24), north range one (1), west of the sixth principal meridian, is

such, that a great volume of water accumulating through natural water courses in the eastern portion of township twenty four (24), in range two (2), west of the sixth principal meridian, is deposited along the public highway north of section twenty five (25) in township twenty four (24), north in range two (2), west of the sixth principal meridian where it seriously interferes with travel over said highway and at times renders said highway impassable