

More Local.

Send in your order for printed stationery to THE DEMOCRAT office and get the best.

J. R. Hunter, of Sioux county, was a pleasant caller at this office while in town yesterday.

The ladies of the Presbyterian church will hold their annual bazaar the first week in December. The exact date will be announced later.

When you are hungry and want a square meal; when you are tired and desire a comfortable bed and room, go to the Valentine House. Rates \$1.50 per day.

Members of the Christian Endeavor will give a supper in Bethel hall, Wednesday evening, October 5th. Supper will be served from 5:30 to 7:00 o'clock.

Wm. F. Brown, of Crookston, is going to have a sale of his personal property Tuesday, the 27th. We printed his sale bill in last week's DEMOCRAT. Look it up and go.

A number of Valentine people went down to the post yesterday to witness a game of ball between the 25th Infantry boys and the Deadwood team. Score 12 to 8 in favor of Deadwood.

J. J. McLean, of Washington, D. C., is here to take charge of the weather bureau station at this place. Mr. Barwick, the present observer, will leave for Philadelphia the first of the month.

The weather bureau report for the week ending September 21st show the highest and lowest temperature to have been 81° on the 18th and 27° on the 14th. There has been no rainfall during the week which has been beneficial to the haymakers. We are now having the usual west Nebraska climate with cool nights and frosty mornings but the frost has not been injurious to any vegetation that is produced in this vicinity.

H. S. Savage having purchased the Star Livery Barn of C. E. Sherman, has formed a partnership with Hammond & Bullis to be known as the Star Livery Co. The Star livery barn will be used exclusively for the livery business, and the Hammond & Bullis barn will be used for a feed and sale stable and will be known as the Club Feed and Sale Stable. We wish to thank the public for past favors and solicit your patronage in the future, believing that with our splendid equipment we can please you and give better service than heretofore. Yours for business, W. B. HAMMOND, C. H. BULLIS, H. S. SAVAGE.

The marriage of Miss Clara Bell Watson to the Rev. Chas. Wayne Ray occurred yesterday (Sept. 14) afternoon at 2 o'clock at the home of Mr. and Mrs. W. J. Hanna, 2449 Y street, in East Lincoln. The house was beautifully decorated with white roses and carnations and smilax. The wedding party entered the room, the bride dressed in white, carrying white roses, while Miss Lillian May Beach played the march. The impressive ceremony was performed by the Rev. J. A. Seamhorn, a presiding elder of the Northwest conference. There were only a few guests present, among them being several members of the Wesleyan university faculty. The bride was a student in the education department of the Wesleyan last year and was popular at University Place. She has occupied prominent business positions, being a bank clerk at Valentine before coming to University Place. The groom is pastor of the Methodist church at Alliance and one of the trustees of the Wesleyan university. Those in attendance say it was one of the prettiest weddings they had ever attended. The happy pair started at 5 o'clock last night upon their wedding tour to Denver and other points of interest after which they will be at home to their friends in Alliance, Nebr.—State Journal.

At \$1.50 per day the best table board and sleeping accommodations in the city can be had at the Valentine House.

Methodist Ministers Assigned.

Chadron district, D. J. Clarke, P. E. Alliance Circuit... C. W. Ray. Brownlee... J. T. Hardesty. Chadron... E. E. Hunt. Cody... Supplied by B. Hunt. Crawford... Geo. D. Egner. Esther... A. C. Barton. Gordon... S. C. Stanhope. Harrison... To be supplied. Hay Springs... Wm. Graham. Hemingford... C. H. Burleigh. Lakeside... Leroy Lyons. Merriman... To be supplied. Rushville... J. A. Neill. Whitney... Sup. by A. S. Jenkins. Longpine dist., A. R. Julian, P. E. Ainsworth... C. E. Connell. Atkinson... J. W. Dewesse. Basset... C. C. Luce. Brocksburg, Sup. by F. Bachelder. Butte... L. W. Horton. Crookston... J. E. Parsons. Fountain Valley... Sup. by A. M. Washburn, P. O. Newport. Johnstown... E. M. Kellar. Longpine... A. L. Fainter. Newport... F. D. Addison. Norden... T. E. Bassett. Simeon... A. F. Cumbow. Springview... H. Rohrig. Stuart... V. C. Daniels. Valentine... A. T. Carpenter. S. A. Beck, missionary in Korea. Matt C. Roberts, missionary in Black Hills Mission.

A first class Table d hote breakfast, dinner or supper for 50 cents at the Chicago House.

Everybody that writes Can use printed stationery. Ask to See our fine envelopes and paper. Your time is money. Mistakes don't occur so frequently and it is a guarantee to the public that you're a busy man.

THE DEMOCRAT, Valentine, - Nebr.

KENNEDY.

Haying is nearly a thing of the past for this season.

D. M. Sears made a business trip to Valentine last week.

McKee Bros. spent several days in Valentine last week on business.

Bill Tripe was seen following the mail carrier last Monday, but we don't know for what purpose.

Wm. Steadman is driving freight wagon and carrying his bed and grub box along these haunts.

R. M. Faddis, of Valentine, spent several days out to the ranch last week. He reports everything flourishing.

Mrs. Wilkinson was playing cow boy last Sunday hunting cattle. I guess she found them all. If any short inquire of Ed Richards as he was herding too.

Haying is all through, except a few who generally hay until nearly Christmas, and everybody seems to have a good supply but no buyers around will make plenty of feed in this county this winter.

One of the Oasis high school graduates bid good-bay to the teacher and the rest of the school last Monday and when last seen was going west, we presume to grow up to be a would be tough.

A stranger stopped at Ed Richards' hay camp a few days ago, looking for work. Ed sized him up and offered him 50c per day. If it hadn't been for Bill Tripe and John Peabody I guess Ed would be running yet.

PHILIPPINES AT WORLD'S FAIR

Complete Exhibition of Island People and Industries Covers Forty-seven Acres and is Independent of Larger Show.

Not even in the heart of Manila city could there be found forty-seven acres of Philippine territory as interesting as that amount of space covered by the islands' display at the World's Fair. Here is an exposition within an exposition, a little wheel that revolves independently of the larger one encompassing it.

Scores of buildings are filled with exhibits, native life is depicted by as many different villages as there are tribes on the islands, military drills are given by Philippine troops, and concerts are rendered by native bands. For its amusement features the Philippine exposition has the humorous Igo-



SOUTH ENTRANCE PALACE OF LIBERAL ARTS, WORLD'S FAIR.

rote, who dines on dog meat, and visitors are entertained by Visayan actors and actresses. Nothing is lacking to make the show complete.

The Administration building is a replica of the government offices in Manila, while the Art and Education building reproduces in miniature the cathedral within the walled city, even the mellowed tints of age being faithfully rendered. A section of the ancient but still serviceable town wall has been reconstructed to serve the double purpose of a gateway to the show and a museum of arms and war relics. The other main edifices are types of Filipino homes, being built of undressed timber, bamboo and rattan, with thatched roofs and broad verandas.

Then there are the tribal villages nestling under the trees, some of the houses perched high up among the boughs, others on piles above the waters of the Arrowhead lake, all of them actual dwellings, fashioned of native materials by native workmanship and illustrating the manners, customs and pursuits of their occupants. Here are women weaving a coarse cloth on a rude hand loom, others making baskets, others tending irrigated fields of rice. One group of men are in village council, trying an offender according to their tribal laws; others are slowly moving in a circular dance to the thump of tom-toms and the clang of brass gongs; others, again, are smelting iron by the aid of a primitive but most ingenious bellows, the constituent parts of which are a bamboo tube and an airtight mop of feathers working therein like the piston of a syringe. And these are but a few of an almost endless variety of life pictures.

The ethnological problem is a somewhat complicated one; but, although there are no fewer than sixteen races represented among the village dwellers, the scouts and the constabulary, each race speaking its own dialect and following its own customs, all may be roughly classified into four groups—the true aboriginals or non-Malays, the pagan Malays, the Christian Malays and the Mohammedan Malays.

The first are the dwarf Negritos, with dark skins and woolly heads, wearers of scanty raiment, proficient in the use of the bow and poisoned arrow, a race of nomads and forest dwellers, pagans pure and simple. They live in their own stockaded village.

Next to them are the Igorrotes, whose origin is traced back to the first wave of Malay invasion. Here, again, we have scanty clothing, amounting almost to nudity, but copper colored skins, long wavy tresses, pleasant featured faces and fine physiques, even though the stature be small. Among these pagan Malays are the head hunters and the dog eaters. They are savages, yet have their code of laws and a knowledge of several primitive industries.

The Christian Malays, produced by the second wave of invasion, are represented by the Visayans, a tall and handsome race, dressing well, living in pretty homes, skilled in weaving, dyeing, basket making, hat making, wood carving and other handicrafts, musicians of no mean merit, the one group of natives who came early and thoroughly under the influence of the early Spanish settlers.

Very different are the Moros, who swept into the islands from the Malay peninsula last of all, bringing with them their Mohammedan religion, also a knowledge of gunpowder acquired with the Koran from the Arabs—fanatics like their teachers, pirates, blood-thirsty, treacherous and vindictive fel-

lows, ever at war among themselves and with the whole outside world. Despite their ferocity they are a clever race, dress handsomely, have their sultans and their slaves and are expert seamen, while long continued pillage on the high seas has surrounded them with many of the luxuries and conveniences of western civilization.

The buildings of Agriculture, Forestry and Fisheries show all the varied natural products, also the extremely primitive processes as yet in vogue, while in the Women's building we are introduced to a number of native manufactures, including the beautiful fabrics from the just, banana and pineapple fibers. This information is collated in the Building of Commerce, where a unique and most effective method of exhibiting is followed. In one hall are samples of all the articles produced for export, among which manila fiber, of course, holds the chief place of prominence, while in a second hall are all the manufactures from every country that are imported and find a ready market among the populace. Thus the business man gets a dual lesson. He sees what he can profitably take from the islands, and also what he may profitably send to them. When it is added that a large number of representative Filipinos have been brought over to visit the Exposition and study American business methods and manufactures, it will be recognized that great benefit both to the islands and to the world at large must result from this work of mutual enlightenment.

CONCERTS BY MASSES BANDS

Prizes Aggregating \$20,000 to Be Distributed at the World's Fair.

Never were musical events in America planned upon such an elaborate scale as those of the World's Fair. A series of concerts will be given by competing bands in contest for prizes offered by the World's Fair. These contests will take place in Festival Hall, Sept. 12 to 17.

Nine cash prizes, aggregating \$30,000, are offered for the successful bands. The prizes are divided so as to give to the organization scoring the highest number of points \$8,250; \$2,500 will be given to the band scoring the second highest number of points and \$1,500 to the one getting the third highest number.

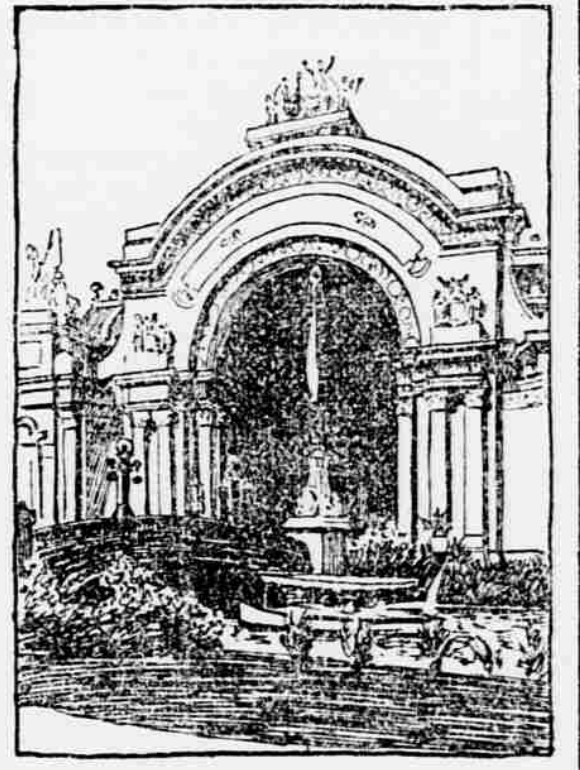
The above division is made for bands in Class A, which consist of twenty members. In the B class \$10,000 will be given in prizes—first, \$4,500; second, \$3,500; third, \$2,000.

Class C, which includes bands of thirty-five members, will enjoy the division of \$12,750. For the organization scoring the highest number of points a prize of \$6,000 has been named. The second prize is \$4,000 and the third \$2,750.

Bands employed by the Exposition are not permitted to contest. All players must be bona fide members, and each musician must have been enrolled at least three months prior to the date of the contest. Each band must send to the bureau the name of its members and a nominal entrance fee.

Festival Hall concerts by massed bands will be given at 7:30 each day during the contest, in which all contesting bands will take part under the direction of a distinguished conductor. All bands entering must agree to play one concert in addition to the competing concert and massed concerts.

A separate programme has been prepared by the Bureau of Music for each class, and each band will play through the full programme of its class. The numbers in all three programmes are by eminent composers and are chosen with the view of bringing out the qualities of the bands performing them. The list of composers includes Wagner, Gounod, Offenbach, Verdi, Saint-Saens, Bizet, Strauss and Leoncavallo.



SOUTH ENTRANCE PALACE OF MANUFACTURES, WORLD'S FAIR.

Unique California Map.

A unique exhibit at the World's Fair was prepared by the agricultural department of the University of California. It is a large map, so colored as to show the character of the various soils of the state. It gives a clear idea of the situation and the extent of the arable and unutilizable sections. In the localities that cannot be cultivated are shown the Sierras, the lava beds and the desert. The map indicates the location of the cultivable portions of the mountains and Mohave plateau and shows the nature of the foothills and valleys of that wonderful state.

Look out for the dates of Dr. Barne's, eye specialist, next visit.

First class table board and first class service for \$5.00 per week at the Valentine House.

Bring your job work here.

If you want to sell your **Farm or Ranch,** List it with us.

Real Estate Bought and Sold. Money Loaned on Real Estate.

M. G. & J. M. CARROLL, VALENTINE, NEBR.

REFERENCES: Rock Co. State Bank, Peoples Bank of Naper and Bank of Naper. OFFICE: One Door North of First National Bank.

Try for Health

222 South Peoria St., Chicago, Ill., Oct. 7, 1902.

Eight months ago I was so ill that I was compelled to lie or sit down nearly all the time. My stomach was so weak and upset that I could keep nothing on it and I vomited frequently. I could not urinate without great pain and I coughed so much that my throat and lungs were raw and sore. The doctors pronounced it Bright's disease and others said it was consumption. It mattered little to me what they called it and I had no desire to live. A sister visited me from St. Louis and asked me if I had ever tried Wine of Cardui. I told her I had not and she bought a bottle. I believe that it saved my life. I believe many women could save much suffering if they but knew of its value.

Georgia Dumber

Don't you want freedom from pain? Take Wine of Cardui and make one supreme effort to be well. You do not need to be a weak, helpless sufferer. You can have a woman's health and do a woman's work in life. Why not secure a bottle of Wine of Cardui from your druggist today?

WINE OF CARDUI

Business Notices

Notices under this heading 5 cents per line each insertion. Among reading matter, 10 cents per line each insertion.

Try a dinner at the Chicago House.

Buy a 21 meal ticket for \$5.00 at the Chicago House.

Everyone is satisfied with meals at the Chicago House.

Don't forget that the Red Front Merc. Co. carry a complete line of Heating Stoves, Ranges, Cook Stoves etc. 35

Guitar and case for sale. Inquire at the Chicago House.

Let Chef Stark prepare you a dinner at the Chicago House.

Horses for Sale.

Some good work horses, saddle horses and some good young mares. Terms to suit purchaser. Inquire at Bishop's livery barn. 23 W. T. BISHOP.

Colonist Low On-Way 8c and Class Rates to Texas, New Mexico, Kansas, Oklahoma and Indian Territories.

Via the North-western Line, will be in effect on Tuesdays, Sept. 20th, October 4th and 18th. For tickets and full information apply to agents Chicago & North-western R'y. 364

Don't forget that the corn husking time will soon be at hand and the largest line of Corn Huskers, Husking Gloves and Mittens, Corn Knives and Hooks; also, cotton-funnel Gloves and Mittens, Pine Tar, etc., can be found in the hardware department of the Red Front Merc. Co. 35

Home Visitors' Excursion Tickets to Indiana and Ohio.

Via the North-western Line, will be sold at very low rates on four Tuesdays, Sept. 13, 20, 27 and Oct. 11, limited to return within 30 days from date of sale. For particulars as to territory to which excursion tickets may be sold, etc., apply to agents Chicago and North-western R'y. 354

Professional Cards.

The Loup Valley Hereford Ranch, Brownlee, Nebr.

Prize Bonned 13163 and Curly Coat 12321 at head of herd. The blood of Fowler, Ansley, Lord Winton and Sir Gladstone predominates in my herd.

I can fill orders for bulls of all ages at any time. Ranch four miles north-west of Brownlee, Nebr. C. H. FAULHABER.

MILL PRICES FOR FEED.

can. bulk	75 per cwt	\$14.00 ton
orts bulk	85 per cwt	\$16.00 ton
eenings	70c	\$13.00 "
op of Feed	1.05	\$20.00 "
orn	.95	\$18.00 "
oop corn	1.00	\$19.00 "
ests	1.20	\$23.00 "

Genevieve Adams Hewitt, Teacher of Singing.

Scientifically correct method of chest development, deep breathing, articulation and tone poising, correction of defects in singing and speaking voice. Chicago House.

Robert G. Easley, ATTORNEY AT LAW. Office over Red Front.

GENERAL LAW PRACTICE. Valentine, Nebraska.

H. M. CRAMER, City Deliveryman.

Trunks, valises and packages hauled to and from the depot and all parts of the City.

H. DAILEY, Dentist. Office over the grocery department of T. C. Hornby's store. Will be in Rosebud agency July 2nd, Oct. 2nd and Jan. 1, 1904.

A. N. COMPTON Physician and Surgeon. Office at Quigley & Chapman's Drug Store. Nights—The Doctor's residence, Cherry Street.

LEROY LEACH County Surveyor. Valentine or Woodlake. GENERAL WORK PROMPTLY ATTENDED TO.

G. H. Hall, M. D. Physician and Surgeon. All calls promptly attended to day or night. Drugs and Pharmaceuticals furnished. Wood Lake, Nebraska.

C. M. SAGESER Barber. First-class Shop in Every Respect. Sells Quinine Hair Tonic, Golden Star Hair Tonic, Herpicide and Col's Dandruff Cure. Pompeian Face Massage Cream.

JOHN F. PORATH Reige, Nebr. Tubular wells and windmills.

Strayed or Stolen From the Cronin ranch, 16 miles west of Wood Lake, Nebr., one brown Shire gelding, ten years old, weight 1600 pounds; one brown Shire mare with strip in forehead, weight 1400 pounds, unbranded. Suitable reward will be given for their return or for information leading to their recovery. EDWARD LEWIS, Woodlake, Nebr.

WANTED—Girl to help with table for board during normal and school year. DONOHUE HOTEL.