

L. L. JOHNSON, M. D.

M. A. SPALDING.

METROPOLITAN DRUG STORE.

Everything (Except Liquor) Usually Kept in a
First-Class Drug Store.

WE ALSO HANDLE

PIANOS AND ORGANS.
SEWING MACHINES.

JOHNSON & SPALDING,
McCOOK - NEBRASKA.

B. & M. PHARMACY.

HAVE IN STOCK A LINE OF

FINE TOILET ARTICLES,

Combs, Brushes, Perfumery, Extracts, Etc.

WINES AND LIQUORS

Will be sold only in cases of sickness, and then only
on Physician's Prescription.

Prescriptions Carefully Compounded, Day or Night.

Doctor's Choice, America's Finest Five Cent Cigar.

McCOOK, - NEBRASKA.

LUDWICK & TROWBRIDGE,

HAVE JUST OPENED UP A NEW LINE OF

FURNITURE!

Stoves Tinware, Japanned Iron Ware.

We Have a Tin Shop in Connection, and will do General Job Work in

Tin, Sheet Iron Copper Ware.

We Manufacture Ludwick's Patent Reflecting Lamp, For
Both Wholesale and Retail. Call and Examine Our Stock.
We Will Sell You Good Goods for the Cash.

West Dennison Street, - McCOOK, NEB.

FREES & HOCKNELL,

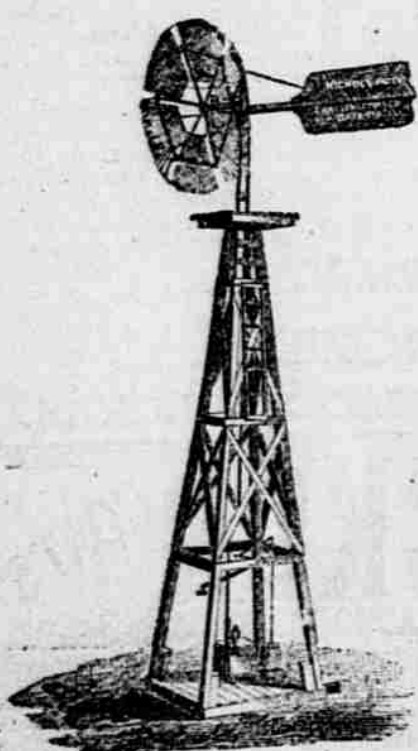
PROPRIETORS OF THE

CHICAGO LUMBER YARD.

DEALERS IN

Lumber, Lime, Cement, Sash, Doors, Blinds,
HARD AND SOFT COAL.

YARDS AT McCOOK, INDIANOLA, CAMBRIDGE, ARAPAHOE, AND OXFORD.



Challenge Wind Mill.

Superior to any on the market, being Heavier, Stronger Built,
and therefore a more Durable Mill. It is the only
absolutely safe Mill built; and out of

Thousands Erected During 12

Years past, not one has ever blown away and left the Tower
standing. A record no other Mill can show. We offer
to put up any of our PUMPING MILLS

ON THIRTY DAYS TRIAL,

And if they don't give satisfaction, will remove Mill at our
own expense. Also Manufacturers of the Celebrated
Challenge Food Mills, Corn Shellers, Iron Pumps
with brass cylinders, Iron Pipe, Tanks.

For estimates, catalogues and prices, apply to

G. B. NETTLETON, McCook, Neb.,

Agent for Southwestern Nebraska and Northwestern Kansas.

GRAND SLAUGHTER

AT THE

"PIONEER STORE!"

We have on hand an Immense and Elegant line of
Woolen Goods, Cloaks, Clothing and Overcoats
that we will close out at their

ACTUAL COST!

To make room for our Spring Stock.

GENT'S - AND - YOUTH'S

CLOTHING!

A Large Stock at Astonishingly Low Prices.

LADIES' * AND * MISSES'

LADIES' - CLOAKS - MISSES'

In this department we have an unusually large and fine
selection, and we will sell them at bed-rock prices.

Drop in and examine these CLOAKS and
get a handsome garment very cheap.

OVERCOATS!

WE ARE SELLING OUR HANDSOME

MEN'S & BOYS' OVERCOATS

At such low figures that everybody should take advantage
of the fact. Call in and see them, and our goods
and prices will surely induce you to buy.

IN THE LINE OF

BOOTS AND SHOES

We have the Largest and Most Complete assortment
ever opened out in McCook.

GROCERIES.

- 13 pounds of Granulated Sugar.....\$1.00
- 14 pounds of extra "C" Sugar.....\$1.00
- 20 bars of White Russian Soap.....\$1.00
- 6 pounds of Arbuckle Coffee.....\$1.00
- 16 yards of Good Muslin.....\$1.00
- 20 yards of Prints.....\$1.00

Perfection Flour \$2 per cwt.

Highest Market Price paid for Produce.

HAYDEN & CO.,

CHAS. NOBLE, Manager.

F. L. McCRACKEN,
RELIABLE WATCHMAKER & JEWELER.

JEWELRY.



SILVERWARE.

Watches, Clocks & Jewelry.

I have a complete stock of everything carried by a
First-class Exclusive Jewelry Store.

MANUFACTURING DEPARTMENT.

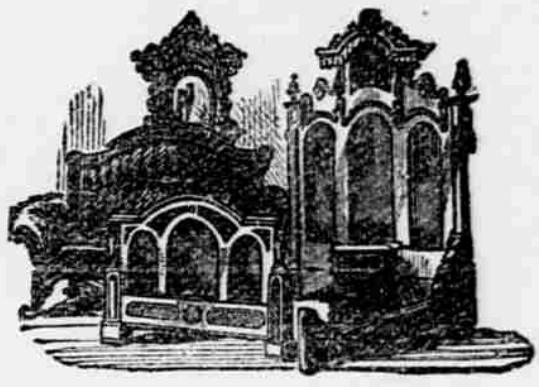
I am now prepared to make RINGS, BANGLES, PINS,
BADGES, and any kind of Emblem Pin, on short notice. I
use nothing but 14k. gold.

F. L. McCRACKEN, McCook, Neb.

BERGER'S

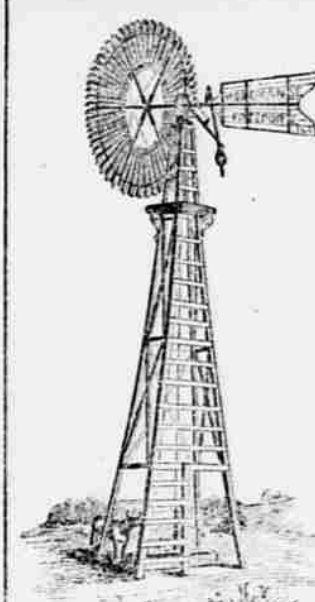
Great Western Furniture Emporium.

Bed Steads, Sofas, Chairs,
Looking Glasses,
Bureaus, What-Nots, Carpet,
Burial Cases, Coffins,
And Coffin Trimmings, Etc.



AGENT FOR THE
WESTERN COTTAGE ORGAN
AND THE
DIAMOND SEWING
MACHINE.

J. E. BERGER, Proprietor, - McCOOK, NEB.



CHEAPEST AND BEST
UNEQUALED FOR
Power, Simplicity, Durability.

Estimates made of Mill and Pump complete upon application.

Every Mill Warranted. Send for Catalogue.

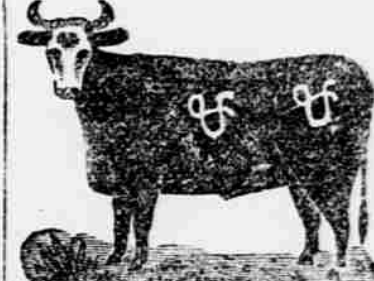
THE WOODMANSE.

This mill is a "solid wheel" and the best self-regulator made. The
Woodmanse No. 6, Pump is the best single acting force pump in the
market. Will work in wells from 10 to 200 feet in depth, and has back
attachments to force water into elevated tanks. Can be used by hand
or windmill. Parties contemplating the erection of a Windmill will
consult their best interests by calling at my Homestead, 1 1/2 miles
northwest of McCook, or at B. Johnston's, 5 miles southeast, and ex-
amine the working of the Woodmanse.

W. M. IRWIN, Agent,
Woodmanse Windmill Co., Freeport, Ill.

STOCK DIRECTORY.

JOSEPH ALLEN.



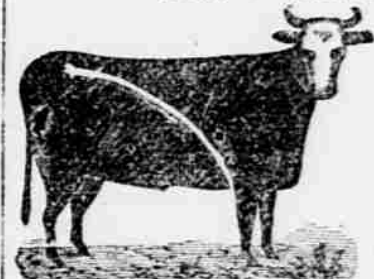
Ranch on Red
Willow creek,
one-half mile
above Osborn
postoffice.
Cattle brand-
ed on right
side and hip
as above. 31

New U. S. Cattle Rancho Co., Limited.



Stock brand:
Circle on left
shoulder, also
dewlap and a
crop and under-
crop on left ear,
and a crop and
under bit in the
Republican.
Post Office
address, Max,
Dundy county, Nebraska.

JOHN F. BLACK.



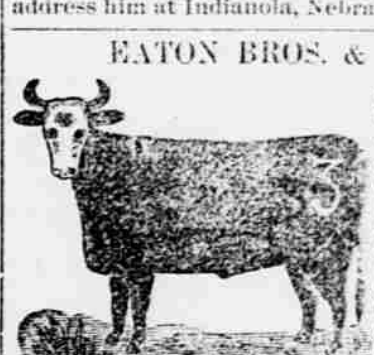
FOR SALE—
improved
levelled Farm
& Hog Land,
Timber and
water. Two
farm houses,
with other
improve-
ments. Con-
venient to
No. 1 school
privileges. Situated on
creek. Call on J. F. Black, on premises, or
address him at Indianola, Nebraska.

HENRY T. CHURCH.



Osborn, Neb.
Range: Red
Willow creek,
in S. W. cor-
ner of Fron-
tier county.
Cattle brand-
ed "OLO" on
right side. Also
an over-
crop on right
ear and under
crop on left.
Horses brand-
ed "S" on right shoulder.

EATON BROS. & CO.



Cattle brand-
ed on left hip.
Also, on S. A
and T brands
on left hip.
Horses brand-
ed the same
on left shoul-
der. Range,
south of Mc-
Cook, P. O. ad-
dress, Mc-
Cook, Neb.

SPRING CREEK CATTLE CO.

J. D. WELBORN, Vice President and Supt.



P. O. address,
Indianola,
Nebraska.
Range: Re-
publican Val-
ley, east of
Dry Creek,
and near head
of Spring
Creek, in
Chase county
Nebraska.

PAXTON CATTLE CO.



J. B. MERRILL, General Manager.
Ranch: At
Spring Can-
yon on the
Frontier
River, Chase
county, Neb.
Stock brand-
ed as above;
also on left
side; on the
right hip and
on the right
shoulder; on
left shoul-
der and on left
jaw. Half under-
crop left ear,
and square-top right ear.
P. O. address, McCook, Neb.

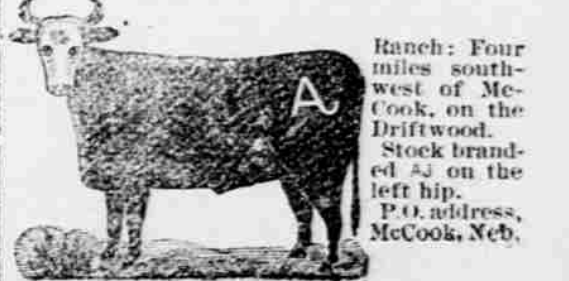
STOKES & TROTH.



P. O. address
Carrieco,
Hayes county,
Nebraska.
Range: Red
Stock brand-
ed above Carri-
eco. Stock
branded as
above. Also
run the lazy
Co brand.

A PRIZE.

Send six cents for postage and
receive free, a costly box of
goods which will help you to
more money right away than
anything else in this world. All of either sex, succeed
from first hour. The broad road to fortune opens be-
fore the workers, absolutely sure. At once address
TRUE & CO., Augusta, Maine.



Ranch: Four
miles south-
west of Mc-
Cook, on the
Driftwood.
Stock brand-
ed as on the
left hip.
P. O. address,
McCook, Neb.