

**B. & M. PHARMACY.**

**TOILET ARTICLES.**

Wines and Liquors will be sold only in cases of sickness and then only on Physician's Prescription.

Prescriptions Carefully Compounded

EITHER DAY OR NIGHT.

*Tansill's Punch, America's Finest FIVE CENT CIGAR.*

WILLEY & CO., McCOOK, NEB.

**Hayden & McCartneys**

Wholesale and Retail Dealers in

**GENERAL MERCHANDISE.**

Dry Goods, Boots and Shoes,  
*Clothing, Hats and Caps.*

**Fancy and Staple Groceries.**

Hams, Bacon, Lard, Flour, Corn Meal.

**Fine Tobacco and Cigars.**

*McCook and Indianola, Nebraska.*

**SUBSCRIBE FOR**

**The McCook Weekly Tribune.**

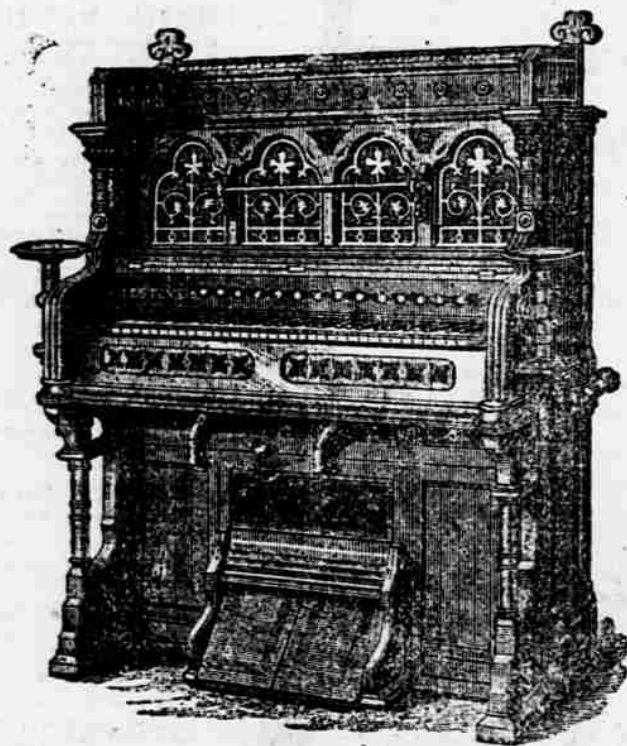
F. M. & E. M. KIMMELL, Pubs.

SUBSCRIPTION: \$2 PER YEAR.

**M. A. SPALDING,**

AGENT FOR THE

ESTEY ORGANS.



STORY & CAMP

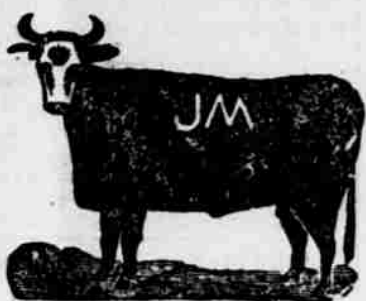
Sold low for cash, or on easy payments, or rented until the rent pays for the organ.

Catalogue With Price-List and Full Description Free.

M. A. SPALDING, Agent.

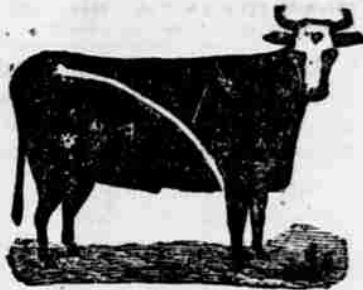
McCOOK, NEBRASKA.

**STOCK DIRECTORY.**

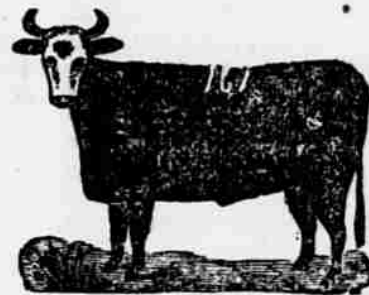


DENNIS McKILLIP.

Ranch on Red Willow, Thornburg, Hayes County, Neb. Cattle branded "J. M." on left side. Young cattle branded same as above, also "J." on left jaw. Under-slope right ear. Horses branded "Z." on left shoulder. 2-14.



FOR SALE.—My range of 1000 acres of deeded land in one body, including the Black and Byfield hay lands; timber and water with two good farm houses and other improvements. Convenient to No. one school privileges. Situated in the Republican valley west of Red Willow creek. Call on or address, J. F. BLACK, Red Willow, Neb. 2-21.



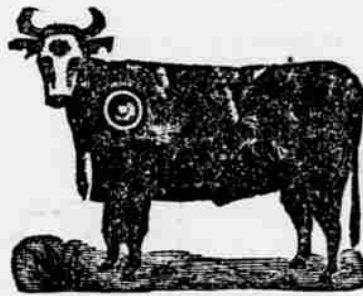
C. D. PHELPS.

Range: Republican Valley 4 miles west of Culbertson, south side of Republican. Stock branded "161" and "7-L." P. O. Address, Culbertson, Neb. 2-22.



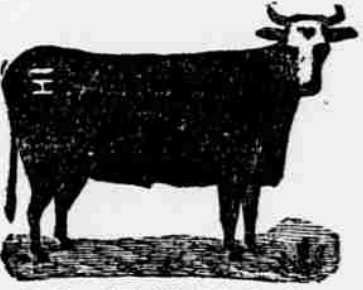
HENRY T. CHURCH.

Osborn, Neb. Range: Red Willow creek in southwest corner of Frontier Co., cattle branded "OLO" on right side. Also, an over crop on right ear and under crop on left. Horses branded "8" on right shoulder. 2-4.



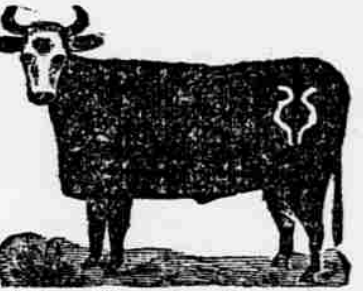
W. J. WILSON.

Stock brand—circle on left shoulder; also dewlap and a crop and under half crop on left ear, and a crop and under bit in the right. Ranch on the Republican. Postoffice, Max, Dundy county, Nebraska. 1-19.



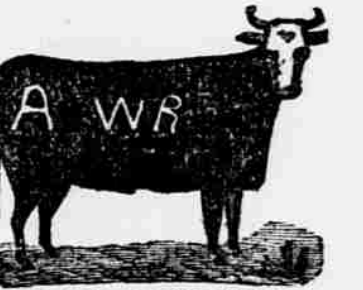
John Hatfield & Son

McCook, Neb., Ranch 4 miles south-east, on Republican river. Stock branded with a bar and lazy "H" on left hip. 2-5.



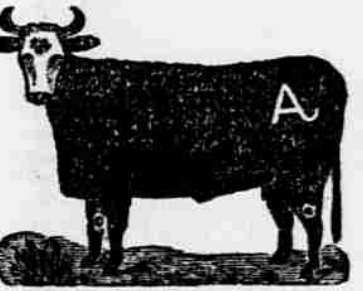
The Turnip Brand.

Ranch 2 miles north of McCook. Stock branded on left hip, and a few double crosses on left side. 2-12. C. D. ERKANBRACK.



W. N. PROCTOR.

McCook, Neb., range: Red Willow creek in southwest corner of Frontier county. Also, E P brand on right hip and side and swallow-fork in right ear. Horses branded E P on right hip. A few branded "A" on right hip. 2-4.



GEORGE J. FREDERICK.

Ranch 4 miles southwest of McCook, on the Driftwood. Stock branded "AT" on the left hip. P. O. address, McCook, Neb. 22-17.

**W. C. LaTOURETTE,**

—DEALER IN—

**HARDWARE, STOVES, QUEENSWARE,**

AGRICUTURAL IMPLEMENTS,

**BARBED WIRE.**

The Largest Stock and Lowest Prices in Red Willow County.

**CALL AND BE CONVINCED.**

Sign of BIG AX. Three Doors South P. O.

McCOOK, NEBRASKA.

**ARAPAHOE**

**STAR MILLS FLOUR.**

This Flour is Warranted to be

**The Finest in the Market.**

SOLD BY

**Hayden & McCartneys, Agents**

McCOOK and INDIANOLA, NEBRASKA.

**FREES & HOCKNELL,**

PROPRIETORS OF THE

**CHICAGO LUMBER YARD.**

—DEALERS IN—

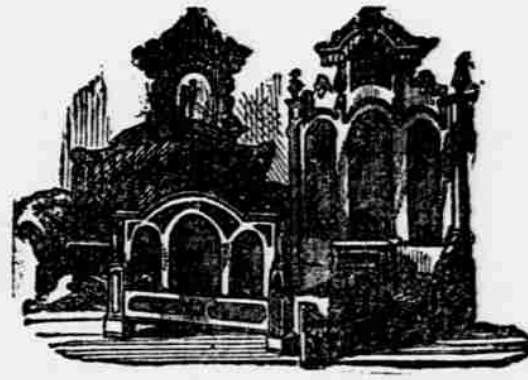
Lumber, Lime, Cement, Sash, Doors, Blinds, Hard and Soft Coal.

YARDS AT McCook, Indianola, Cambridge, Arapahoe, and Oxford.

**BERGER'S**

**Great Western Furniture Emporium.**

Bed Steads, Sofas, Chairs, Looking Glasses, Bureaus, Wash-Nots, Carpet, Burial Cases, Coffins And Coffin Trimmings, Etc.



AGENT FOR THE VICTOR HOUSEHOLD AND THE DIAMOND SEWING MACHINES.

J. E. BERGER, Proprietor, McCOOK, NEB.

**THE CITIZEN'S BANK OF McCOOK**

—DOES A GENERAL—

**BANKING BUSINESS**

Collections made on all accessible points. Drafts drawn directly on the principal cities of Europe. Taxes paid for Non-Residents. Money to loan on Farming Lands, Village and personal property. Fire Insurance a specialty.

Tickets for Sale to and from Europe.

CORRESPONDENTS: First National Bank, Lincoln, Neb. Chase National Bank, New York.

J.W. DOLAN, President. V. FRANKLIN, Vice President. W. F. WALLACE, Cashier.