

NTY.

SKA COUNTIES.

No. bushels of rye soil.	No. of miles of railroad.	Population.	No. of school houses.
4,800	111.50	12,414	90
41,000	87.10	19,000	77
800	28.40	13,097	80
3,500	80.19	19,914	110
112,000	80.25	18,250	104
3,700	90.00	14,225	102
2,800	50.30	8,440	73
800	41.50	2,434	50

trial Statistics 1901.

NG.

Orchard: 250 peaches, 30 ap-
ple cherries. In good desirable location
from church and 1 1/2 miles from school.
Improved farm in Nuckolls county 4
miles from town. 150 acres under
cultivation. 25 acres in pasture well
fenced with oak posts and three barb
wires, 18 acres in alfalfa. Good five
barn 24x32, L 18x14, cow barn 18x24
machine shed and granary 18x32, hog
barn 12x20, 10 acres fenced hog
orchard, wind mill and tank and
crib. This is a No. 1 good farm, and
under cultivation is rolling but not
the soil is a rich black loam with clay



JENSEN BROTHERS' ROLLER MILLS.
CAPACITY, HUNDRED BBL. DAILY.

This milling plant was built in 1899, is 28x56 feet, three stories and basement, and is situated on the B. & M. R. R. tracks in Nelson. It contains a storage elevator of 25,000 bushels and a flour house of six cars capacity. The machinery of this plant is all the latest improved, among which are the No. 1 Middling Mill, the Klondyke Wheat Huller, and the Plansifter Bolters, with corn, rye and graham systems. This mill is operated by a 50-horse power engine, has a capacity of 100 barrels daily, and an actual output of 20,000 barrels annually. The owners and operators—the Jensen Brothers—do a general milling business, but make a specialty of their "Pride of Nelson" and "20th Century" flour which is manufactured from choicest select wheat, under the personal supervision of their expert miller, and in which is blended all the fine qualities that can be desired by the bread-baking house wife, or the plain or fancy professional baker. "20th Century" flour makes bread that makes the husband glad forever, and that makes the bread customer or boarder wear cheerful smiles. A single trial wins for this flour a constant customer.

**Write for our Complete Descriptive
Catalogue of choice farms for sale.**

No. 18 This is a good grain and stock farm located in the little home valley in Nuckolls county, 3 1/2 miles from Oak. 120 acres in pasture, 10 acres in timber, fine feed lots. House 16x21, L 16x16, barn 16x16, hog house 16x16, good well of never failing water, windmill and tank. All fenced and cross fenced. Land under cultivation is rolling but not tough; pasture land very rough but fine pasture. Soil is a porous black loam and productive.

No. 23 A cheap quarter section in Nuckolls county, 5 miles from Nelson, 1/4 mile to school and 1/4 mile to church. Running water, springs, and abundance of good timber and pasture. 70 acres under cultivation, 3 in alfalfa and 100 in hog pasture. Small orchard, peaches and cherries. House 16x24, stable for four horses, henhouse and corncrib. Good soil in desirable neighborhood. A fine grain, alfalfa and stock farm.

No. 25 Improved farm in Nuckolls county, joining townsite of Mount Clare, 200 acres under cultivation, 200 acres in pasture, fenced with four new wires and cedar posts. House 16x20, barn, granary, corner, corrals, new windmill, three tanks and a never failing well. Land under cultivation level but well drained; soil is rich black loam with clay subsoil. Being located close to market, this is a fine grain and stock farm and is a bargain at the price.

No. 21 Six miles from Ruskin, Nebr., 120 acres under cultivation, 30 acres in pasture fenced with barb wire and oak posts one rod apart. Pasture land is rather rolling, unsuitable for cultivation. House, barn, granary, corn crib, wind mill and three tanks in Nuckolls county.

No. 51 600 acres under cultivation, 40 acres in pasture. Three sets of improvements. Houses each 18x20, L 12x16, three windmills and tanks, two shed barns one barn 30x32 with 12 foot posts. Entire 600 acres level but well drained; no lowland. In Nuckolls county, 5 miles from town having two railroads, 3 miles from town with one railroad, 2 miles from Oak Roller Mills. This farm has paid 8 per cent on capital investment. Good neighborhood. Soil, black loam.

No. 52 580 acres under cultivation, 60 acres in pasture and lowland in Nuckolls county, 4 miles from town with two railroads, 4 miles from town with one railroad. House, barn, granary, wind mill and tank. This is a fine farm, land under cultivation is level but well drained. Pasture land and lowland are level. Nuckolls county.

No. 53 Improved farm adjoining good town; 180 acres under cultivation, level land 160 acres in pasture, well fenced with four barb wires and cedar posts one rod apart. Pasture land is rather rolling, unsuitable for cultivation. House, barn, granary, corn crib, wind mill and three tanks in Nuckolls county.



TOPPERS OF KANSAS CITY MARKET. SPURCK'S FEED YARD.

Fine half section in Nuckolls county, with two sets of improvements. 15 1/2 acres, acres in alfalfa, 30 in pasture and 220 under cultivation. 1/2 mile to school, 2 miles to church, and 7 miles from two good towns. House 24x26 five rooms; barn 30x30 with shed on each side 16x40, 40 ton mow, 2000 bu granary, granary 600 bu, chicken house, coal house, corner 1000 bu, fine pasture, small orchard. Second house 14x28 five rooms, stable for five horses, chicken house, granary 200 bu, two windmills and tanks. All in good repair. A farm of good black soil underlaid with clay subsoil. Land some rolling but not rough. Look this up.

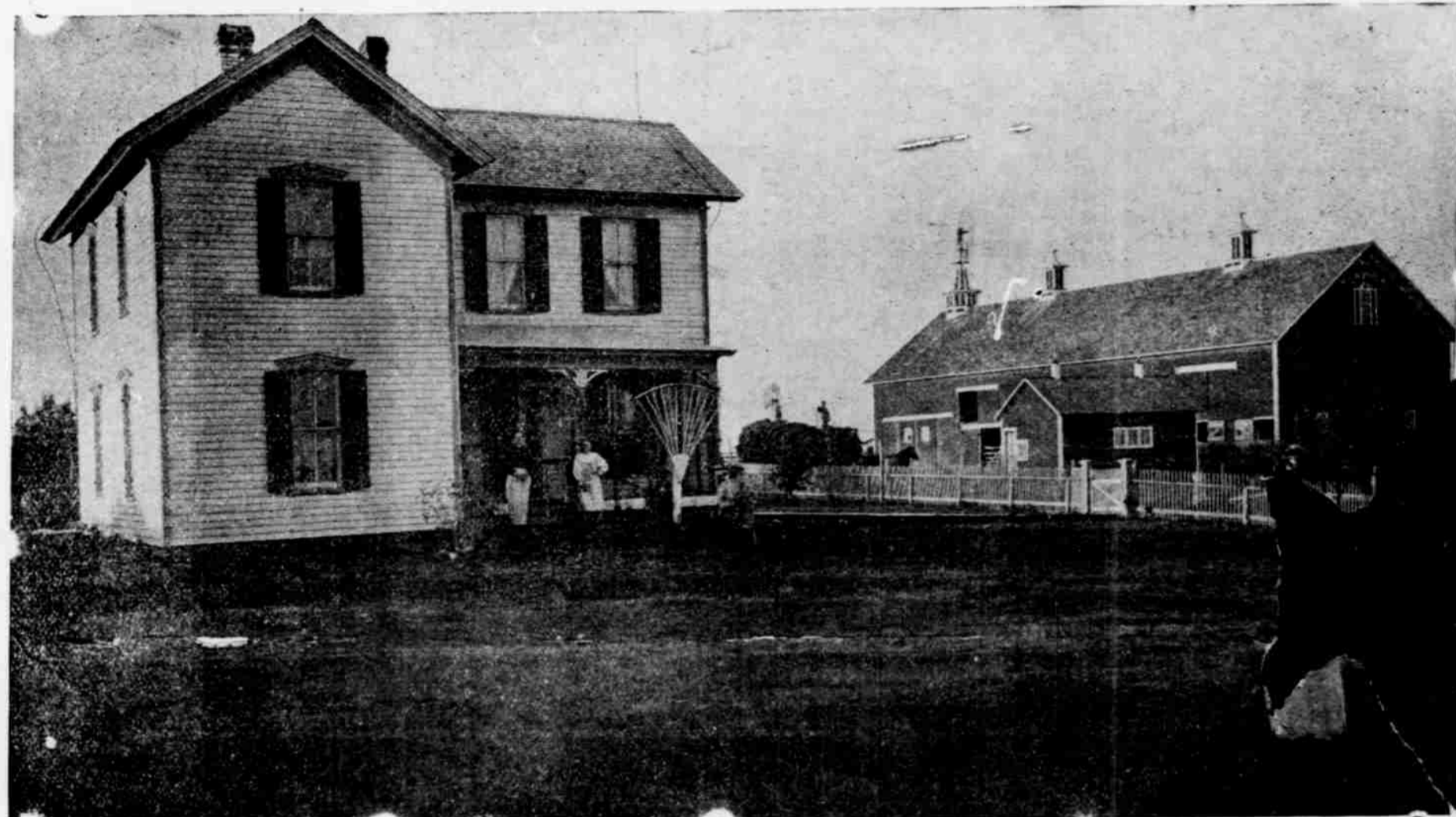
In Nuckolls county, 7 miles from Nelson and 5 1/2 miles from Angus; 100 acres under cultivation, 40 acres in pasture, 20 acres in timber and 10 acres in alfalfa. Farm watered by fine springs and two wells. House one and one half stories, 24x32, L 14x22; horse and cow barn combined 32x40, two granaries, capacity of 500 and 1000 bushels each, hen house, hog house 8x32, buggy shed, good windmill. Five acres fenced hog light with boards. Good orchard. Pasture fenced with three wires, oak and ash posts. This place is one of our bargains.

A fine smooth 70 acre farm in Nuckolls county, 6 miles from Nelson, the county seat. Fine smooth land, gently sloping to the north, all under cultivation. All fenced. Improvements poor. Small house, stable, granary, etc. Rich black soil, underlaid with clay subsoil. One mile to church and half mile to school. Some trees. A fine little 80 acre farm that will soon pay for itself.

No. 121, 160 acres, \$4,000.
Improved farm in Nuckolls county, six miles from Nelson, 150 acres under cultivation, 12 in timber and 25 in prairie. House 16x27; barn 16x32 with granary in one end. East eighty fenced. Some orchard. Land somewhat rolling, but fine soil and productive.

No. 122, 160 acres, \$4,000.
Poorly improved farm six miles from Nelson, in Nuckolls county, 140 acres under cultivation, 20 in prairie. House 16x20; granary 8x16; some orchard. Land some rolling, but fine soil.

No. 123, 320 acres, \$8,000.
Improved tract of land in Nuckolls county, six miles from Nelson, 200 acres under cultivation, 60 in pasture. Improvements fair, some orchard, soil black loam with clay subsoil.



FARM HOUSE OF H. H. HOOVER, NEAR OAK, NEBRASKA.

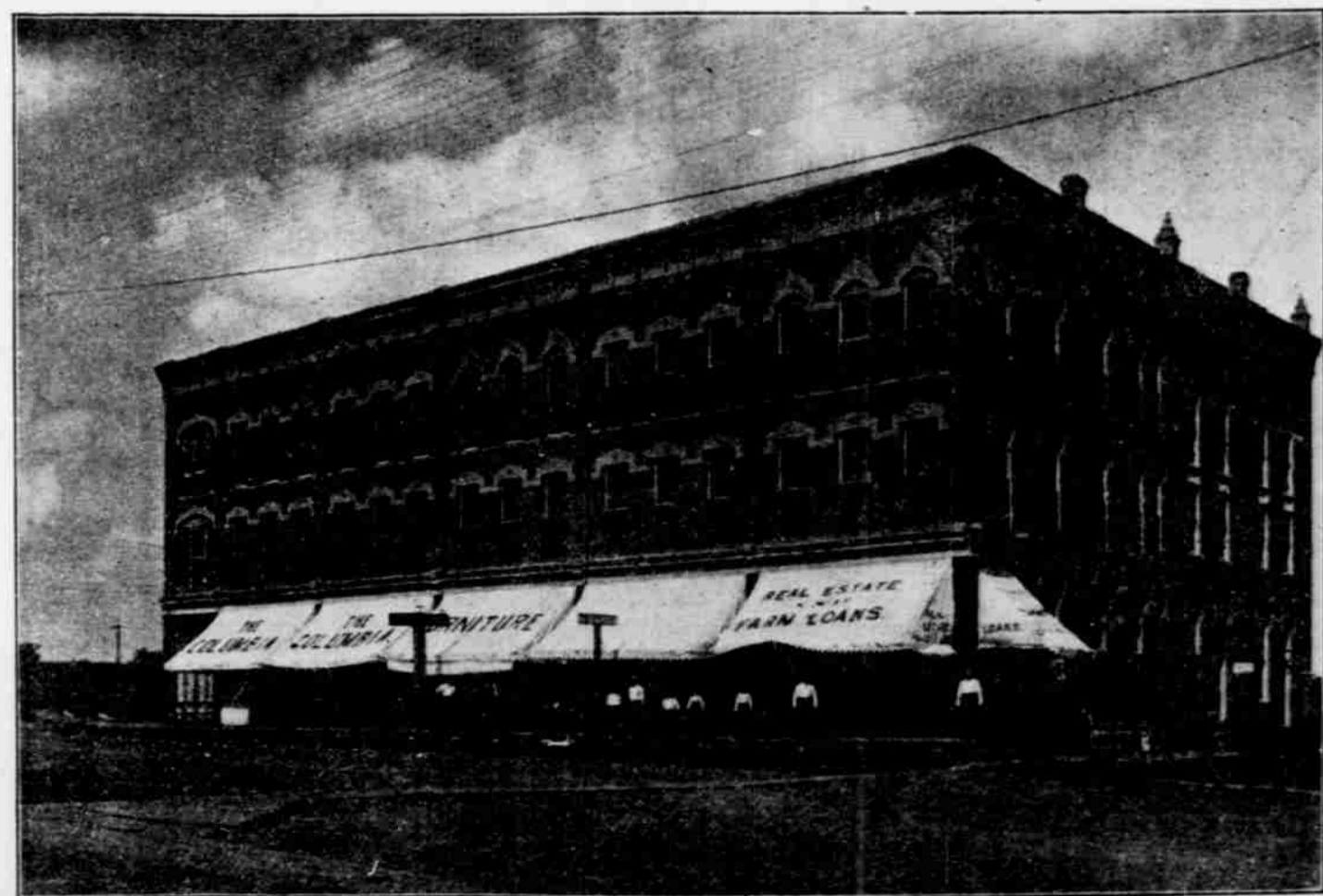
No. 148, 80 acres, \$2,500.
Good 80 acre farm in Nuckolls county, 3 1/2 miles from Nelson and three fourths mile to school, small frame house, three rooms. Good well and never failing spring. Barn for six horses, with five ton mow. Smoke house, corn crib, granary, hog house, buggy shed. All fenced. Running water. Orchard, 125 apples, peaches and cherries. 7 acres in alfalfa, 10 in timber, 65 under cultivation, 15 in timber and pasture. A fine little farm at a right price.

No. 149, 40 acres, \$2,050.
Fine little 40 acre well improved hog, chicken and dairy farm. Four room house, granary, stable, two chicken houses, cow shed, calf shed, hog sheds and pens, 500

No. 74 A fine farm in Nuckolls county with a fine pasture in connection with its plow land, 100 acres under cultivation, two in timber, 10 in alfalfa and 46 in pasture. House 18x16, L 18x20, one and one half stories, eight rooms. Barn 24x33 add 24x11, for eight horses, eight cows, and seventeen ton mow. All fenced with barbed wire. Windmill, tank and milk house. Eighteen feet to water. Double corner 16x24 with 8 feet driveway; hen house 14x24. Orchard, 50 bearing apples, and 700 young peaches 5 miles from good town, 1 and 2 1/2 miles to the churches, 1/4 mile to school. This farm may be just what you want. Rich black soil underlaid with spongy clay subsoil. A fine place to handle a little bunch of stock.

rods woven wire, plenty of water. Improvements all up in good repair. 3 acres in timber, 25 in alfalfa, 7 in pasture and 2 under cultivation. One fourth mile to Angus, a nice little town on B. & M. In Nuckolls county. 80 acres adjoining can be bought at a right price. Just the farm for a man desiring to raise chickens and hogs and take life easy.

No. 26, 80 acres, \$1,800.
Fine 80 acre farm in Nuckolls county. 20 acres in pasture and 60 under cultivation. All fenced but north end. House not very good; would make good stable. Well and pump; 7 acres in alfalfa. 4 miles to good town and 7 miles to Nelson, 2 miles to church and one mile to school. Rich black loam with clay subsoil. A bargain.



THE COLUMBIA HOTEL AND OPERA HOUSE.

Of all the improvements in Nelson, the most pleasing to the traveler is her new hotel. The Wheeler Spurck & Wheeler office block was remodeled, and the Columbia Hotel was opened up by D. L. Moore on January 15, 1913. This hotel is all newly fitted up with large, spacious office and dining room and 25 outside bed rooms, and is all heated by steam. This is the finest hostelry in South-eastern Nebraska, and has this for its motto: "Your Personal Comfort is Our Concern." Office of G. D. Follmer & Son in south-west corner of block. The Columbia Opera House—the east half of this splendid building—is the best room for this purpose, in this part of the state. Has large stage and modern scenery, and seats five hundred people. It is under the management of F. A. Scherzinger, Nelson.