

# — READ THE OMAHA GUIDE —



**EMERGENCY HOSPITAL** 15-kilowatt generator for operating room lights and power equipment is loaded at a Federal Civil Defense Administration warehouse onto two trucks. In attack situations, an entire self-sufficient 13 1/2-ton hospital of 238 items in 450 containers could be moved by a single large truck to a school, church or other suitable building which was reasonably undamaged. (FCDA Photo)

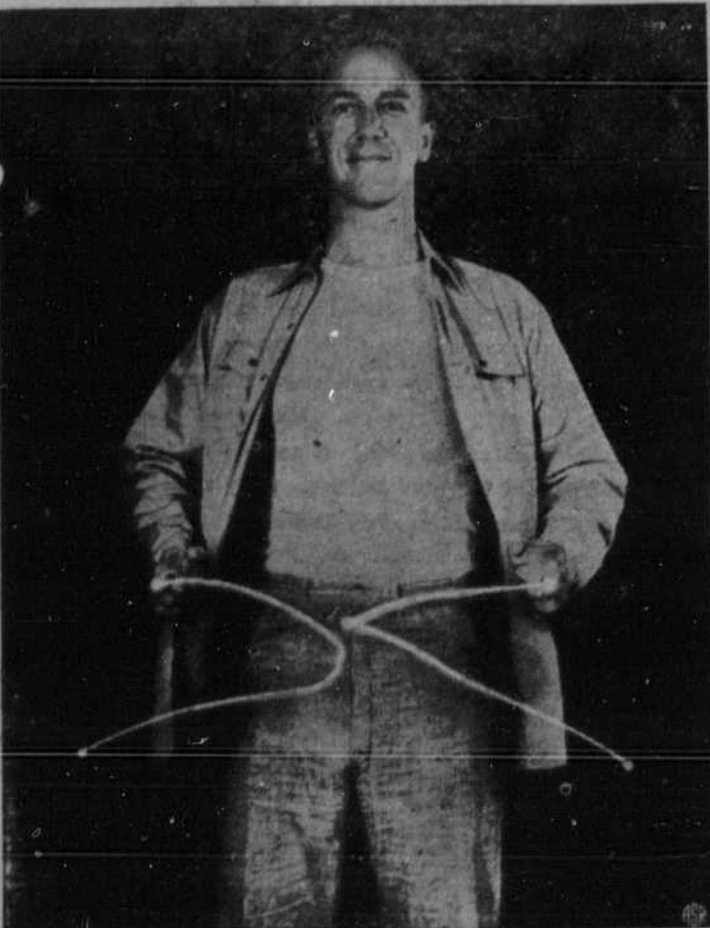
## Food Sense -- Not Nonsense



### On the Surface -- It's a Treasure

Another treasure uncovered by science which has proved effective in substantially reducing tooth decay is not one to be brushed aside. This treasure — with a name that is a mouthful, too — is sodium lauryl sarcosinate, a "miracle drug." Its action takes place on tooth surfaces and when added to a dentifrice, it performs equally well whether teeth are brushed in the morning and evening only or after each meal. These results revealed by a two-year research project have recently been published by Dr. L. S. Fosdick of Northwestern University. Young adults in industry and students at three different universities had co-operated to test the effectiveness of the new product. Behind this research is the belief that decay is caused by acids which attack the surface enamel of teeth. These acids are produced rapidly when bacteria act on foods with a high sugar content. Carbohydrate foods which contain starch — such as enriched bread, cereals, or potatoes — have not been a dental threat, however, since the action of bacteria on these foods is so slow that saliva can easily neutralize any acids which are formed. Bacteria need direction in attacking tooth enamel — support from substances called enzymes. By slowing down the effectiveness of enzymes with the new "miracle drug," acids are prevented from attacking enamel. "Digging" beneath the surface, dental scientists continue to emphasize, however, that good nutrition — the real treasure — is basic to the formation of strong, healthy teeth. A varied diet which includes enriched bread and cereals, milk, meat, fruits and vegetables is important for everyone, but particularly so for the pregnant woman and the growing child. With a legacy of good nutrition as a starter, care of tooth surfaces assumes its place in maintaining dental health.

## New No-Button Work Shirt Offers Extra Cleanliness, Easier Care



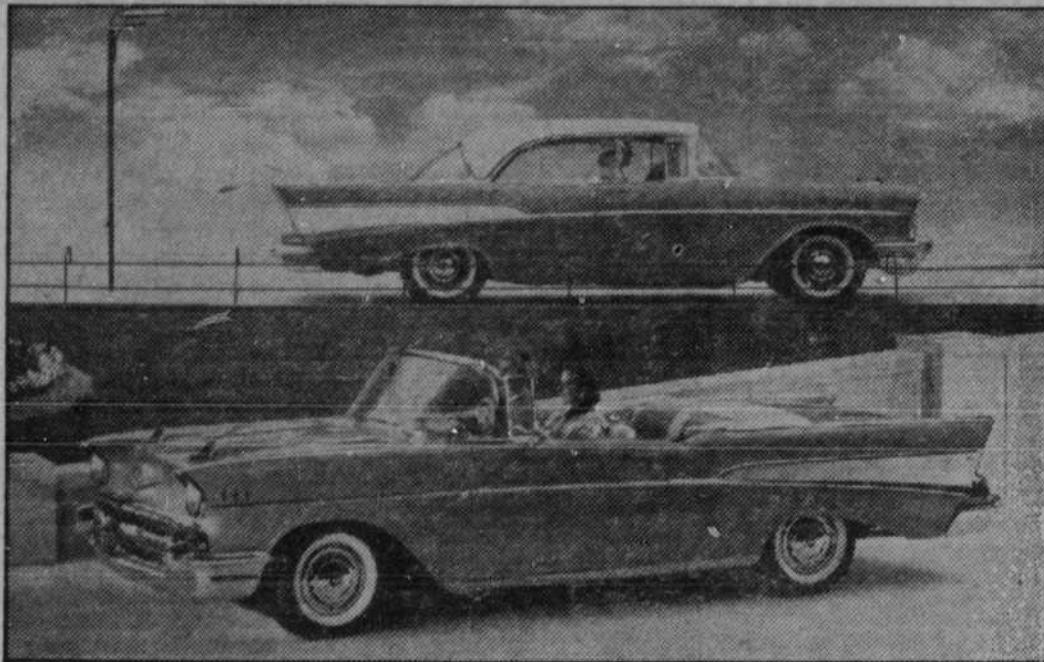
A new type of work shirt without buttons is now in the stores, and it brings to housewives a greater freedom from frequent laundering and mending than they have ever enjoyed, according to a report from leading work clothing manufacturers. These new shirts have snap fasteners instead of buttons, thus eliminating a number of ironing and button-replacement problems and making possible a longer period of wearing with less soiling by hands. The fasteners are completely safe in laundering—they will not rust and will go through the wringer without damage. Thanks to this fastener feature on these new shirts, the wearer can open them with a quick tug rather than by individual handling, as is necessary with buttons. This is described as being an added safety factor in instances where clothing is accidentally snagged in working machinery. Work clothing departments and stores in both city and farm areas are now stocking these shirts as a regular item. According to the manufacturer, Scovill Manufacturing Company (Waterbury, Conn.), the Gripper snap fasteners on these shirts are an advance in work clothing design following years of testing. The new patented radial rib design of the fasteners provides the extra strength necessary to make these shirts possible.

## 1957 Dodge Lancer Hardtop Five Inches Lower



THE 1957 SWEPT-WING DODGE, lower and longer, has the most exclusive styling and engineering improvements in history. Height of the two-door Lancer hardtop models like the Custom Royal Lancer shown above, has been reduced by five full inches so that the new Dodge stands barely four and a half feet high. Rear fenders sweep upward and backward to keynote the car's swept-wing styling, accenting a sport car appearance that is also a mark of the jet aircraft age.

## 1957 Chevrolets Carry Individual Beauty



Distinctive styling and trim treatments for two-level photo of the "Two-Ten" sport sedan, at each of the three series of 1957 Chevrolet pastop, and the Bel Air convertible. Bodies plus seeger cars are emphasized dramatically in this wide range in color choices total 460 for the line.

## Fashion Hits the Road



**EASY AND COOL TRAVEL ALL THE WAY**—Convertible fashions, like convertible cars, are perfect for Summer travel. And brief contour shorts with topover or Bermudas with eye-catching Trinidad blouse, take well to any road in a Custom Royal Dodge. Fetching Calypso-inspired separates by Koret of California, with matching skirts for stop-overs, need no ironing—they can be dripped overnight, ready to go in the morning!

## STUMPS FOR DEMOS



Cong. Charles C. Diggs of Detroit, able spokesman for labor and civil rights, will campaign intensively on behalf of Adlai E. Stevenson and Estes Kefauver. Diggs, who is Michigan's first Negro congressman, was a member of the platform committee at the recent Democratic National Convention.

## AN ALPHA FOR ADLAI

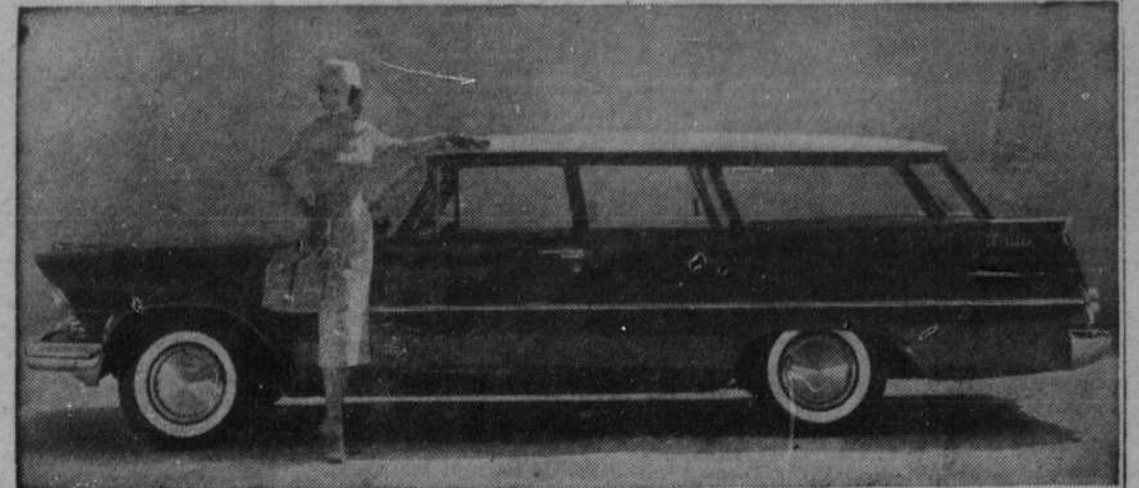


Atty. Belford V. Lawson, Jr., has been assigned major speaking engagements by the Democratic National Committee, it was announced this week. Mr. Lawson was a member of the platform committee at the recent Democratic National Convention and is vice-president of the Stevenson-Kefauver Club of Washington, D. C. He is a former national president of the Alpha Phi Alpha Fraternity.

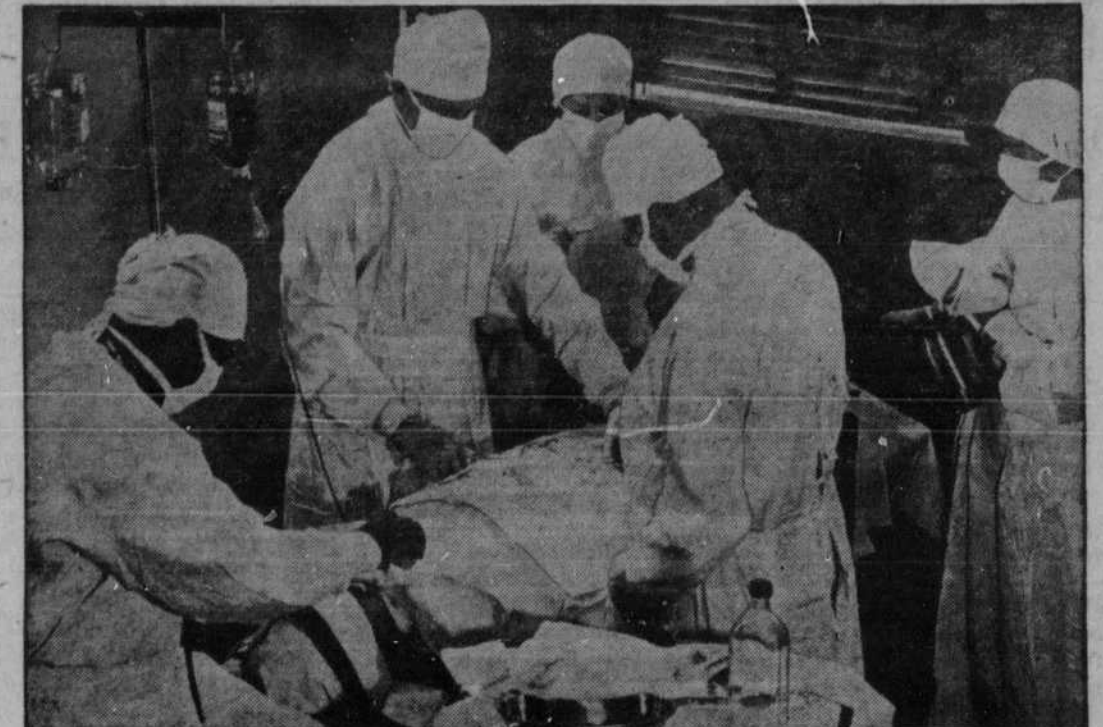


**FRONT-UP DIAGNOSIS** and assignment for treatment of large numbers of attack casualties would be the function of the "triage," or admitting room in a Federal Civil Defense Administration 200-bed emergency hospital. Because first aid training programs have been expanded, it is expected that most victims—like this simulated casualty—would have received some first aid before they reached the hospital for actual professional treatment. (FCDA Photo)

## New Plymouth Suburban



Plymouth offers 12 different models of Suburbans in its new 1957 line of cars. They include two-door and four-door models, with either PowerFlow Six or Fury 301 V-8 engines. Four of them are 9-passenger cars with a rearward facing third seat. All have Plymouth's revolutionary new Torsion-Aire ride. Car pictured here is Custom Two-Door Suburban.



**SURGERY** can be carried on in comparatively primitive surroundings by using the facilities of the Federal Civil Defense Administration's emergency hospital during attacks. The operating lights would be powered by the hospital's own 15-kilowatt generator, while the instruments would be sterilized in bottle-gas-heated autoclaves, or pressure cookers. (FCDA Photo)

# Stockpile of Mercy

**BOOKER T. WASHINGTON**  
1856-1956



**100th ANNIVERSARY CELEBRATION**

## Goodwill Building Crusade

Booker T. Washington in his historically famous Atlanta Exposition Address delivered in Atlanta, Georgia a little more than 61 years ago, called the attention of the nation to the fact that "There is no defense or security for any of us except in the highest intelligence and development of all." Our land in that day was faced by group problems similar in nature to those that are affecting us today as an outgrowth of the Supreme Court's Decision of May 17, 1954. It is because of these problems that this the first in a series of messages from the Booker T. Washington Centennial Commission, is being issued.

This Commission was brought into existence in April to pay tribute to the one-hundredth anniversary of the birth of Booker T. Washington (April 5, 1856), through a year long program designed to focus the attention of the nation upon the present day value of the same fundamental teachings of this great American.

Since Booker T. Washington was an Apostle of Goodwill and since portions of our land today are being torn asunder by mistrust, fear, and hate among Americans of different racial strains, the Booker T. Washington Centennial Commission humbly invites all Americans to join its "Goodwill Building Crusade."

Ours is a land of many races and creeds. We have different origins, cultures, and backgrounds—but we are Americans all! Ours is a nation of Washington and Jefferson, Lincoln and Lee, and millions of ordinary men and women who toiled and sweated, sacrificed and died to build their wonderful heritage. It was worth their lives to build it—surely it is worth ours to preserve its hopes and ideals by working together in peace and goodwill.

Remember France's Maginot Line—built so strong of steel and stone that Frenchmen felt secure behind it—but France fell. Not so much because of a lack of strength in its great wall but mainly because of the spirit of its people. And remember too, Divine teachings set forth in these words in your Bible—no matter what your race or creed—"A house divided against itself shall not stand."

Hate and mistrust in your community might be wiped out if group representatives meet, discuss, and work together to find answers for the problems that are causing racial sores to fester.

Communities that pull together unite our nation. We invite you to help to make yours such a community.

**BOOKER T. WASHINGTON CENTENNIAL COMMISSION**  
SIDNEY J. PHILLIPS, President



**SIDNEY J. PHILLIPS**  
President

**FREE**  
For a limited time  
copies of  
"Gems of Wisdom"  
Washington's most  
famous quotations —  
yours FREE.

**YOU TOO CAN HELP CELEBRATE!**  
Hurry! Just a few left  
**CARVER—WASHINGTON**  
**COMMEMORATIVE COINS \$1.00**  
World Famous "UP FROM SLAVERY"  
Autobiography Pocket size — 50c  
**ORDER TODAY**  
**BOOKER T. WASHINGTON CENTENNIAL COMMISSION**  
BOOKER WASHINGTON BIRTHPLACE, Virginia  
Sidney J. Phillips, President

# Phone Your News To HA0800