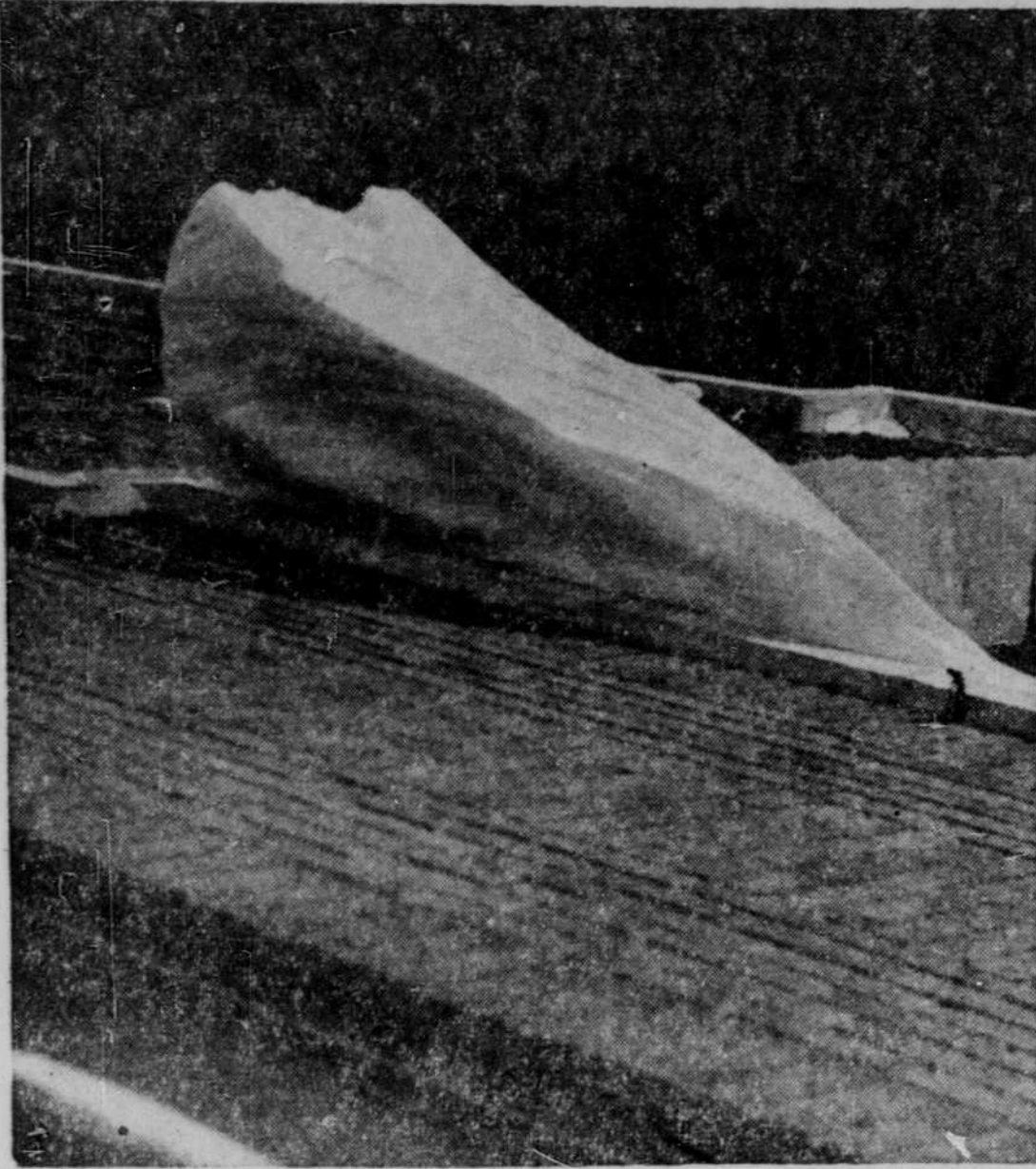


O'Neill Snow--1953 Style!

This page of pictures graphically tells the story of the 48-hour snowstorm that screeched across north Nebraska last Thursday and Friday, February 19 and 20, and dumped mountains of snow on the O'Neill locality — the third major assault by Ol' Man Winter in four years and one that will be long remembered. Snowfall variously estimated from 14 to 18 inches fell as the

result of a freakish twist in the weather. Drifts up to 18 feet high were left in the heart of the city, all railroads and highways were blocked, O'Neill residents were out of power for 3½ to 12 hours, and all of north Nebraska was isolated from the outside world because of crippled telephone and telegraph lines.

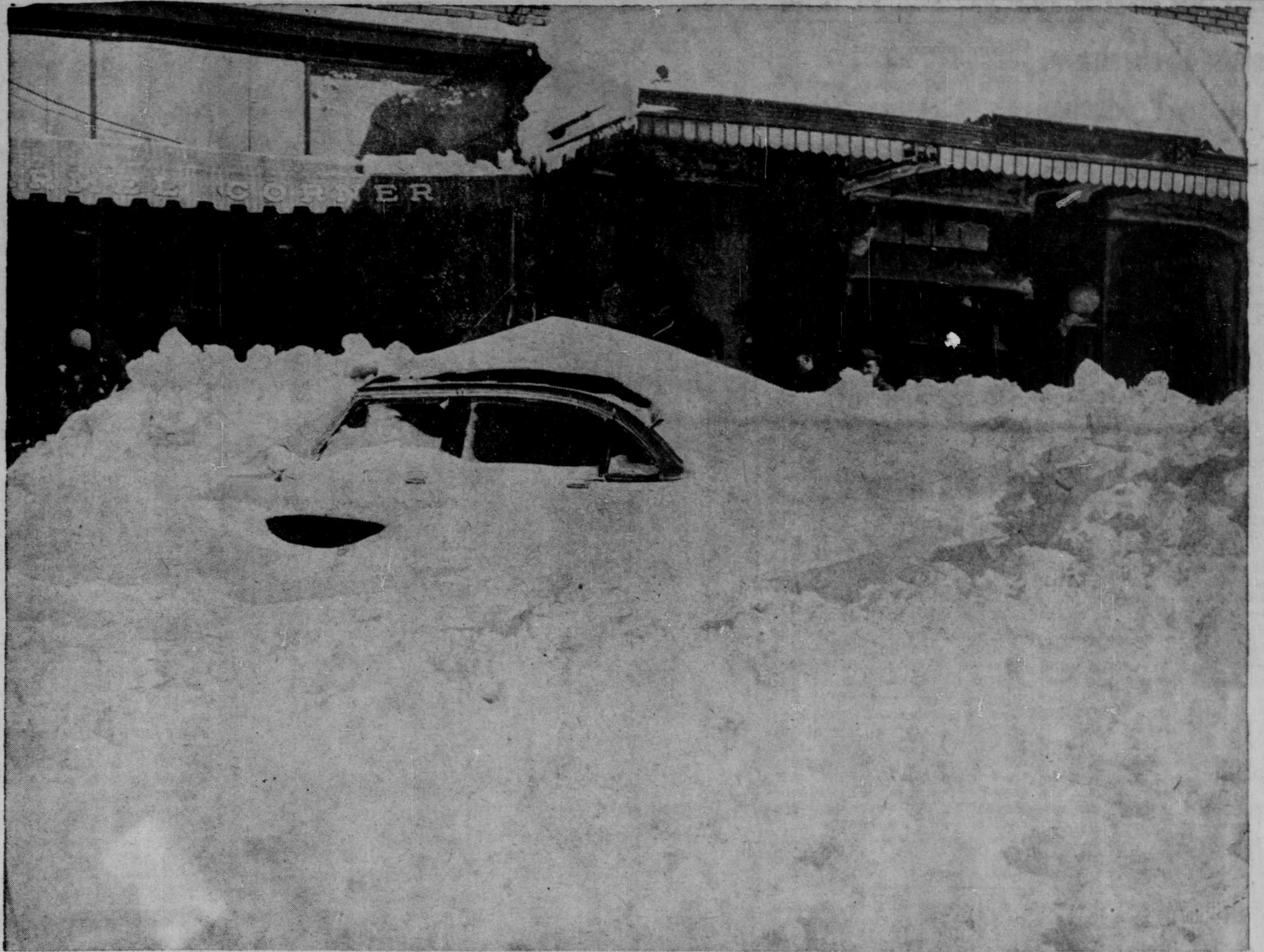


This freakish snow formation (at left) protruded four feet from the roof of the Clauson building. (Formation also visible in photo of Consumers building on this page.)

All Photos by
THE FRONTIER
JOHN H. McCARVILLE
STAFF PHOTOGRAPHER

Extra copies of this issue are available at The Frontier Circulation Counter

7c Per Copy
or 10c Per Copy Prepaid
to Any Address in
the U.S.



Only car in a row in front of Golden hotel that escaped complete submersion by giant drifts.



City street crews lost no time in undertaking the colossal job of snow removal. Photo looking east on Douglas street at 10 a.m., Friday.



Truck rumbles through the half-mile long drift at the John Dick farm, where U.S. highway 20 traffic was tied-up. After the 1948-'49 recurring blizzards there were layers of ice requiring three days' work for the rotary snowplows. The '53 snow was soft and light and plows sailed through before the snow had a chance to settle. Photo taken Saturday afternoon.



Intense weight of snow forced collapse of 50-foot aluminum canopy at Consumers Public Power building. The marquee buckled during the height of the storm, no one was hurt, plate glass windows were not broken.



Remember 1948-'49? This Golden hotel corner scene following a big snow and blow is tossed in for readers to make their own comparisons.



"No Parking" sign went unheeded by weather-beaten wayfarers who gave up Thursday before peak of storm. All parking stalls were filled and machines buried. (Note circle which points out thin auto antennae.) Jacket atop car belongs to owner—an Alaskan—who has started to dig.