

Cardinals Capture Ding-Dong Battle

Elgin Catholic Team Spilled, 41-39

The rafters shook in the O'Neill high school gym on Tuesday night as the St. Mary's Cardinals eked out a 41-39 victory from a potent quint from St. Boniface of Elgin.

Behind until late in the third quarter, the Cards gave the Elgin crew its second 2-point loss in four days. The Elgin basketballers had dropped a 51-48 game to Ericson Friday.

Spectators here were treated to one of those games in which anything can happen—and it did. Two sophomores for the Cards presented thrills to a near capacity crowd. Bennie Bazelman heaved a baseball throw that traveled nearly 60 feet with only 2 seconds in the third quarter. The horn sounded and St. Mary's was out in front, 35-32.

The real savor of the game was Dewayne Weier, who bucketed 2 free throws in the last 40 seconds to tie up the game and then, after regulation play was over, he sank two more gratis flips to give the Cards a 41-39 win.

Here's how the game went:

First Quarter
Wagner curled a field goal from the side, Kransek followed with a gift shot. Weier started SM scoring with a free throw and then Kallhoff was fouled while shooting made the second of two shots for a 4-1 St. Boniface lead. Kransek potted from the far out and was fouled from the shot, the free shot was good. Jerry Wanser drew a foul on a jump shot but missed both tosses. Weier dropped a foul shot making score 7-2 St. Boniface. Kallhoff potted a one hander from the keyhole. Wagner on a breakaway dropped one from the side to move St. Boniface to an 11-2 lead. Wayne Donohoe made one of two free shots and then Graham took ball on a steal for a bucket. Kallhoff countered with a long shot and Bennie Bazelman stole the ball again going the distance for another Card field goal. The score was 13-7. Kallhoff dropped another long one hander from the keyhole and Graham slipped one in on a pass from Donohoe. Kallhoff on the dead run let one fly from the hip to move the Elgin crew into a 7-9 lead as the quarter ended.

Second Quarter
Donohoe opened with a jump shot and followed with another bucket as he was fouled. Gratis toss was no good and score stood, 17-13 St. Boniface. Kallhoff and Schindler pushed the score higher with free throws for the Elgin lads. Makel countered with another free throw. Bennie Bazelman split the net with a beautiful one hander and Graham flipped in a foul shot. Heithoff laid in a fg after a scramble and followed with a free toss 26-13 St. Boniface. Terry Wanser bucketed a ball from out and then took a pass from brother Jerry for the other two counters ending the half with a 23-20 lead for Elgin.

Third Quarter
On a double foul Wagner split the net and followed with two more after being fouled by Fritton. Terry Wanser dropped an overhead shot and then the Cards moved to a man for man defense. Every point that was made after this brought noises from the crowd as though it were the last point in a tied up ball game. Donohoe dropped a free throw to move the score to 27-23 for the Bonnies. Makel countered with a field goal and then Bazelman used a lay up and then Wagner came back with another bucket. Donohoe split the cords with a free toss and it was 31-26; the Bonnies still leading. Bennie Bazelman followed with another bucket and then Weier the rangy Card center dropped in a field goal for a two point deficit. Bazelman then knotted the score at 31-31 with a nifty one hander and Donohoe followed with a bucket to push the Hilltop lads ahead for the first time, 31-33. Wanser fouled Wagner and the shot was good with 2 seconds remaining. Bazelman took the ball from out of bounds and zipped three-fourths the length of the floor on a baseball throw to end the scoring 35-32 for the Cards.

Fourth Quarter
Jerry Wanser opened with a free throw and Kallhoff countered with another gift shot. Heithoff stole the ball and went all the way for a lay up. Wagner tied up the game again, and then moved his crew in front on two gift throws. Terry Wanser knotted the score again with a free throw and Wagner dropped the second of an automatic two shot foul. Weier fouled Kallhoff and the first shot was good to push the Elgin crew into a 39-37 lead with only 40 seconds to go. Wagner fouled Weier under the basket and both tosses shredded the cords to again tie up the game 39-39. Just as the horn sounded ending regulation play Weier was fouled again. Taking aim on the first he dropped it to give the Cards victory, the crowd swarmed on the floor and the referees shoed them off to give Weier his second shot which gave the scoring and the O'Neill parochial quint its second victory in three outings.

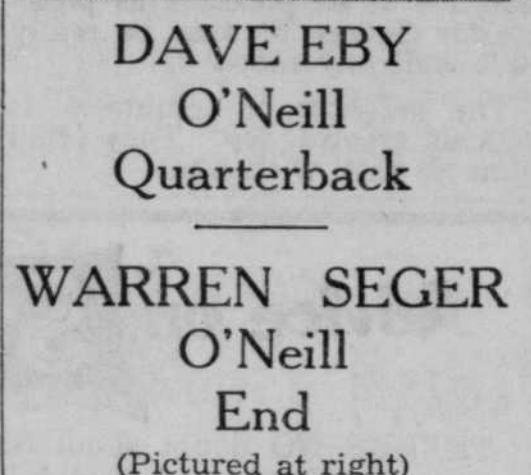
St. BON. (39)	fg	ft	pf	tp
Wagner, f	4	7	5	15
Zegers, f	0	0	0	0
Krause, c	0	1	4	1
Schueh, g	4	5	4	13
Hiethoff, g	3	1	4	7
Rotert, f	0	0	0	0
Shindler, f	0	1	2	1
Mackel, g	0	2	2	2
Setting, g	0	0	0	0
Kallhoff, g	0	0	0	0
Totals	11	7	23	39

St. MARY'S (41)	fg	ft	pf	tp
Bazelman, f	6	0	3	12
Graham, f	2	1	2	5
Weier, c	0	6	6	6
W. Donohoe, g	3	4	2	10
J. Wanser, g	0	1	5	1
J. Fritton, f	0	0	1	0
Tomlinson, g	0	0	0	0
T. Wanser, f	3	1	4	7
R. Donohoe, f	0	0	0	0
Totals	14	13	21	41

The Frontier's 1952 All-Holt Grid Team



DUANE BOOTH
O'Neill
Fullback



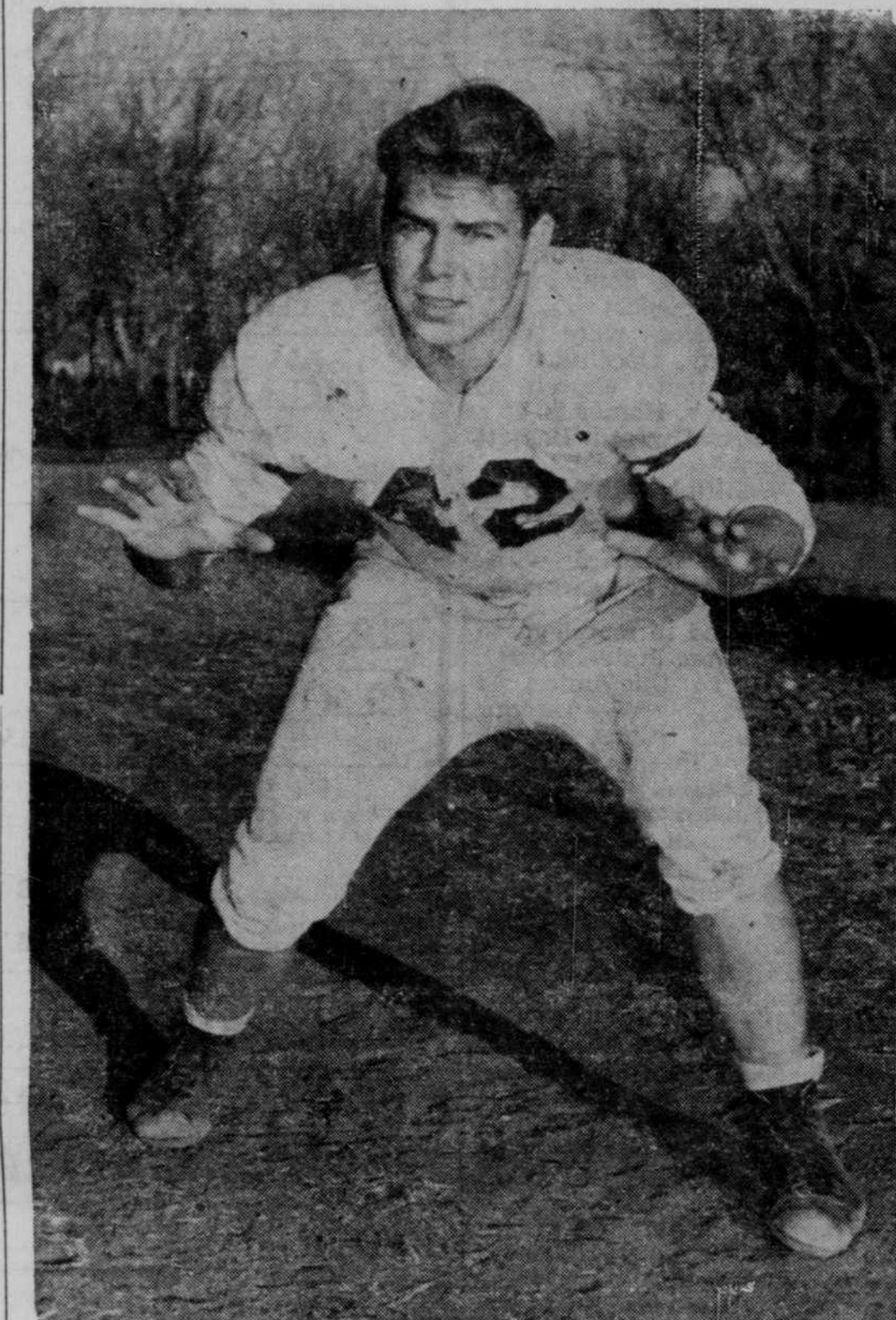
DAVE EBY
O'Neill
Quarterback



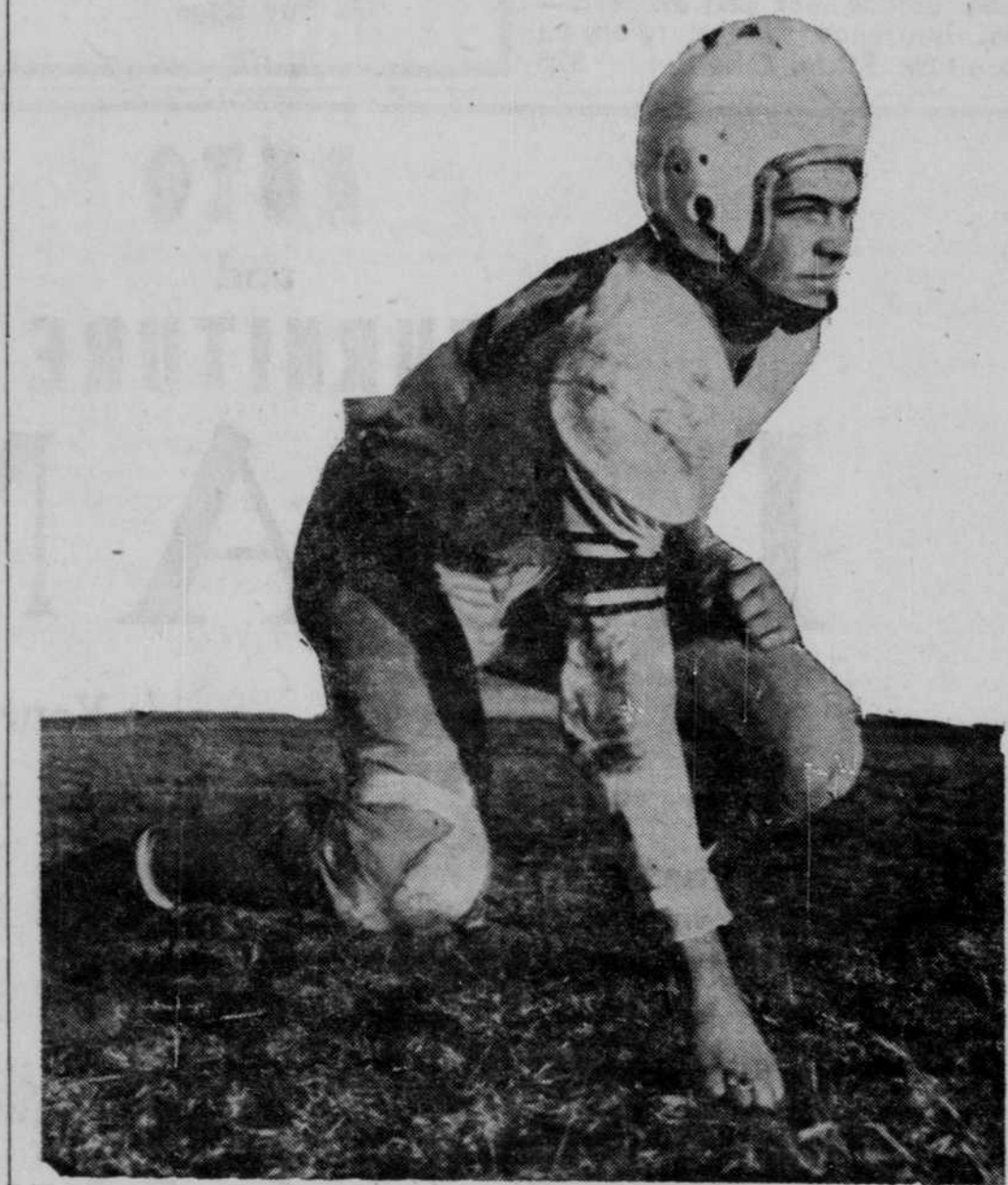
WARREN SEGER
O'Neill
End
(Pictured at right)



BOB CARROLL
O'Neill
Halfback



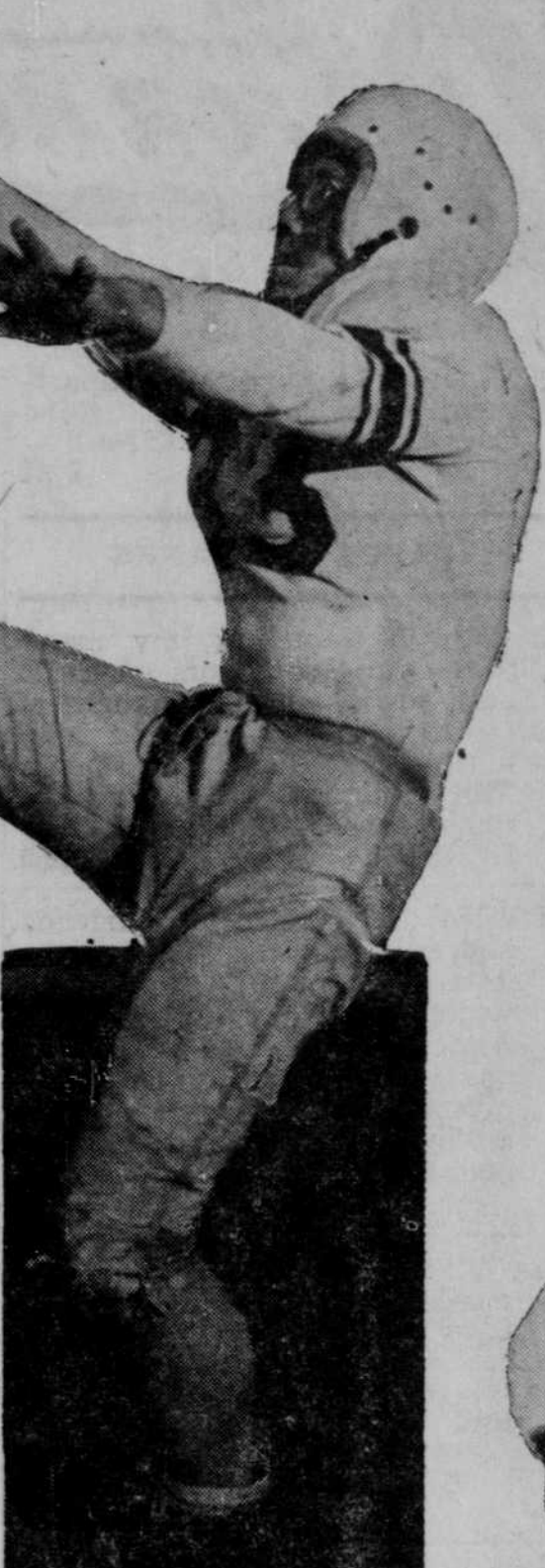
GALEN HULL, O'Neill, Tackle



ED DAVIS, O'Neill, Tackle

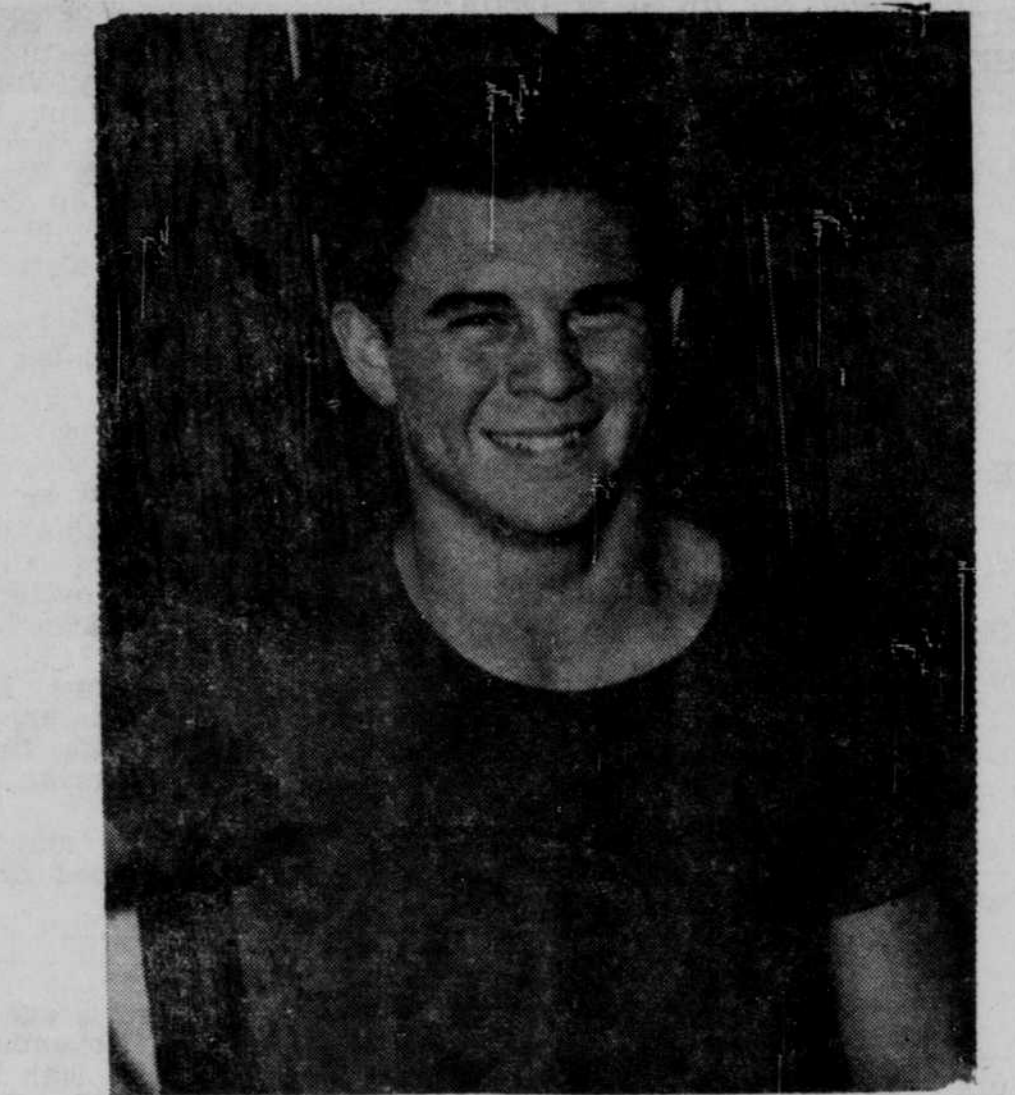


LYLE DAVIS, O'Neill, Guard

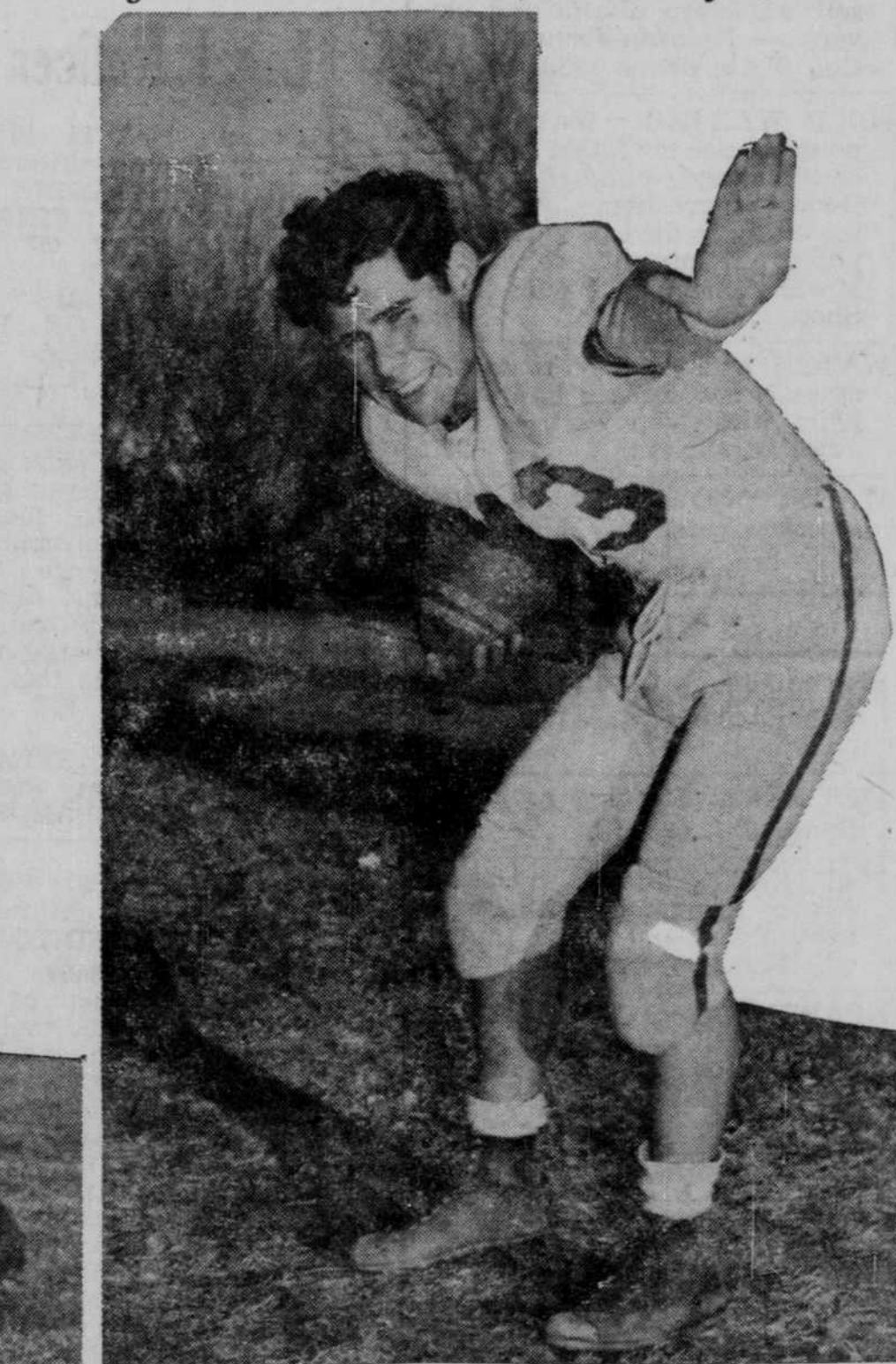


DUANE ALTON
O'Neill
Guard

RONNIE BAZELMAN, O'Neill, Center



JERRY WANSER, St. Mary's, End



GEORGE KILCOIN
O'Neill, Halfback

Blues Monopolize All-Holt Berths

By a Staff Writer
Those unbeaten and untied O'Neill high school Eagles, who delivered their alma mater its first perfect grid season in many a moon, virtually monopolize The Frontier's sixth annual all-Holt county mythical football team. Coach Marvin Miller's kids gobbled up 10 of the 11 posts in the most lopsided balloting in the annals of this newspaper's honor offerings.

St. Mary's Jerry Wanser, a 190-pound bundle of power, squeezed into the all-star lineup. But he was the only outsider who pressed for a berth. This was O'Neill's year and each coach in the county apparently was anxious for the honors to go there.

The Miller kids faced, only one Holt foe—Atkinson—and romped 50-0.

THE SELECTIONS:

Name	Class	Wt.	Ht.	Position
WARREN SEGER, O'Neill	Jr.	161	5'10"	End
JERRY WANSER, St. Mary's	Sr.	190	5'11"	End
GALEN HULL, O'Neill	Sr.	192	5'11"	Tackle
ED DAVIS, O'Neill	Sr.	170	5'11"	Tackle
RONNIE BAZELMAN, O'Neill	Sr.	185	6' 1"	Center
LYLE DAVIS, O'Neill	Jr.	175	5'11"	Guard
DUANE ALTON, O'Neill	So.	161	5'11"	Guard
DAVE EBY, O'Neill	Sr.	157	5'11"	Back
GEORGE KILCOIN, O'Neill	Jr.	147	5' 8"	Back
BOB CARROLL, O'Neill	Sr.	147	5' 8"	Back
DUANE BOOTH, O'Neill	Jr.	183	5' 8"	Back

The monopoly of all-star slots serves only to add more laurels to a memorable season. The Blues are unofficial Holt county champions and official rulers of the North-Central Nebraska conference.

Landing a berth on the mythical all-star team means nothing more than newspaper publicity.

DUANE BOOTH, O'Neill, fullback: He delivered yardage consistently when Miller needed it, excelled on the buck, turned in creditable punting throughout the season. He was a deadly blocker. A junior, he'll be tough for Blues' opponents to reckon with another season. Booth never had a pot blocked. He was an extra good placekicker.

BOB CARROLL, O'Neill, halfback: The lightest man on the O'Neill team, Carroll regularly could be depended upon for a lengthy junket with the ball. He ate up probably as many yards as any ballcarrier on the club. Bob was a shifty runner and fast and an outstanding linebacker and blocker.

GEORGE KILCOIN, O'Neill, halfback: Georgie piled up more points than any of his mates. As a junior, he developed rapidly, learned to follow interference well and developed that peculiar sense of finding the holes and exploiting them at the right moment. Kilcoin has played his last football game because of age ineligibility.

DAVE EBY, O'Neill, quarterback: His clever ball handling, hard and accurate passing and keen analytical sense fortified the Blues with a chap whom all opponents feared. Eby's play was characterized by cool, calculating and methodical manners. He played end on defense and was a master at breaking 'em up and turning 'em in. He had more than his share of tackles for the season, blocked well.

JERRY WANSER, St. Mary's, end: This chap played standout ball through an up-and-down season for the Cards. His leaping snatches of passes, hard-running and vicious tackles made him the most versatile and most feared grider for SMA. Wanser led the Scarlet in scoring and was a rugged defender.

WARREN SEGER, O'Neill, end: This junior has been a fast-comer and his track training paid big dividends on the grid. Seger was a hard-charger, always got downfield under punts, accounted for several touchdowns on the receiving end of passes, ran good interference and tackled well. He has possibilities of being a great player.

ED DAVIS, O'Neill, tackle: Ed's play though never spectacular was consistent and he presided over his notch in a business-like way. He was always there at the right time. Great spirit.

GALEN HULL, O'Neill, tackle: Here was one of Holt county's all-time great linemen. Hull was consistently the star of the week in Nebraska prep circles and he'll make somebody a dandy college prospect. Hull, 192 pounds of him, completely dominated any opponent he ever faced, offensively and defensively. When Hull was out of the Eagles' lineup his absence was keenly felt. He's a natural ball player, loves it, and failed to gain statewide recognition only because his team didn't go against a stronger slate.

RONNIE BAZELMAN, O'Neill, center: When the books are finally close on O'Neill high's perfect 1952 slate there'll be a special notch for Mr. Bazelman, an ever-dependable snapper, a lad who could be depended upon for opening up the line when the play was ordered through his position. Moreover, he seldom yielded yardage through his post, and went through the season without a bad pass.

LYLE DAVIS, O'Neill, guard: Lyle (Ed's brother) salted down his position early in the season although he was not originally slated as a starter. A junior, he will be tough next year. He was a fine defensive player and a good tackler.

DUANE ALTON, O'Neill, sophomore: Youngest man on the honor squad, Alton carried a starting berth at O'Neill high and climaxed the season with a spot on the all-star team all because he listened well, learned fast, and played his heart out. He's the only soph on the honor crew.

City Cage Title Won by Eagles

Cardinals Wilt in 2d Period as Baker Kids Show Strength

Coach Paul Baker's more experienced O'Neill high Eagles were held down in the scoring department until midway in the second period during Friday night's annual intracity title clash with the St. Mary's Cardinals.

Baker adjusted his well-oiled attack a bit and the roof fell in on the game but outclassed Scarlet, O'Neill won, 45-22.

Long, lanky Gary Buckmaster, the Eagles' towering center, hit four fielders and 10 freethrows to lead the Blues. The big fellow was difficult for the Cards to handle without offending him.

Don Hollenbeck's floor play sparked and Davey Eby looked good for the winners, especially after he began snagging rebounds midway in the second.

St. Mary's Wayne Donohoe was a thorn in the side of the Eagles during the first, utilizing his bulk nicely under the O'Neill basket.

Buckmaster's counterpart, Duane Weier, dumped in nine points to lead the Scarlet offensive. However, he was being rushed and not connecting on his whirling tries from the foul circle.

O'Neill jumped to a 11-6 first period lead, stretched the margin to 21-9 at halftime, and zoomed ahead 34-14 at the end of the third.

A full-house (but not overflow) witnessed the game. St. Mary's was the host team. The Blues' win avenged a 30-28 Card victory last year.

In a prelim, the Baker-tutored reserves romped, 49-21, over the SMA seconds. O'Neill Soph Al Meyer, competing on the court for the first time, tallied 13 points for the winners. Meyers stands 6-1.

Boxscore:

O'NEILL (45)	fg	ft	pf	tp
Hollenbeck	3	3	0	9
Dexter	0	2	1	4
Chace	2	2	2	6
Buckmaster	4	10	3	18
Seeger	0	0	0	0
Eby	1	2	4	4
Closson	0	0	1	0
Carroll	2	0	2	4
Booth	0	0	0	0
Davidson	0	0	0	0
Totals	13	19	16	45

Page Eagles Split in Two Games

PAGE—The Page high school Eagles have won one and lost one during last week in cage play.

Clearwater measured the Holt team, 77-47, on Tuesday, Dec. 2. The fast-rolling Clearwater offensive units started strong and maintained a torrid clip. The Eagles couldn't muster their all-out scoring effort until the third period—and that was too late to save the evening. P. Norge, Clearwater center, hit 28 points; R. Park, Page forward, accounted for 14.

On Friday night, the Eagles blasted the Ewing Tigers, 54-28. L. Leist, Page tall boy, garnered 17 points to lead the offensive show.

Sophs Predominate in Ewing Squad

EWING — Sophomores are prominent in the Ewing high school basketball squad of 21.

The Tigers opened the season Friday night against Page, going down to defeat—28-54.

Leading candidates on the squad are Marvin Carl, Melvin Pruden, Walter Hand, Tom Christon, Joe Thoendal and Lowell Jensen.

Remainder of schedule:
December 9—Tilden here.
December 14—Elgin there.
December 16—Open.

December 19—Meadow Grove, there.
January 2—Clearwater, here.
January 5-9—Elkhorn Valley, there.

January 13—Orchard, here.
January 16—Inman, here.
January 19-23—Holt county, there.
January 27—Atkinson, here.
January 30—Open.
February 3—Royal, here.
February 6—Battle Creek, there.
February 10—Brunswick, here.
February 13—Inman, here.
February 17—Chambers, there.
February 23-28—Class C. tournament.

Ainsworth Walks on Stuart Quint, 60-24

STUART — The Stuart high school Broncos were trampled, 60-24, last Thursday night by the Ainsworth Bulldogs. The game was played at Ainsworth, a conference match.

The Ainsworth seconds won from the junior Broncos, 31-13. Tuesday evening at Stuart the Broncos lost another loop game, bowing to Bassett, 26-46. The prelim game also went to Bassett, 33-48. The Stuart and Bassett girls finished in a 32-32 deadlock in volleyball. Janelle Potratz was top point-getter for Stuart with 8, and Shirley Shald had 7.

Boxscore of the main event of Tuesday's show:

STUART (26)	fg	ft	pf	tp
J. Nelson, f	2	3	5	7
Wewel, f	0	1	0	1
Hytrek, f	2	4	3	8
M. Mitchell, c	0	1	0	5
Brewster	0	3	2	3
Seeger	0	0	1	0
Tielke	0	2	4	2
Total	6	14	13	26

BASSETT (46)	fg	ft	pf	tp
Young	3	3	4	9
Richards	3	1	3	7
L. Businger	2	0	2	4
Peterson	1	0	2	4
M. Businger	5	6	2	16
Grandt	0	1	0	1
Gordon	3	1	1	7
Herrin	0	0	1	0
Arnholz	0	0	1	0
Totals	17	12	18	46