

Page Crew Scores O'Neill Eagles

The Page high Eagles came to town Friday night and behaved like vultures. They sorely wanted (and almost got) the hides of their O'Neill high counterparts.

But O'Neill squeaked out a 41-37 triumph.

The home crew amassed 8 points during the first 2 minutes of play, then the visitors decided to make it a ball game. Page led, 11-10, at the end of the first period and held a 20-19 advantage at the rest period. Coach Paul Baker's kids regained the advantage in the 3d with a 34-29 lead at the start of the final canto.

Mlinar, c	0	0	0	0
Ulrich, g	1	0	2	2
J. Hytrek, g	0	0	0	0
D. Shald, g	1	4	4	6
Wewel, g	0	0	1	0
Totals	4	7	15	15
SPRING (40)	fg	ft	pf	pts
Swins, f	3	1	2	7
J. Libolt, f	1	0	1	2
Jairhead, f	5	0	1	10
Williams, f	0	0	0	0
S. Libolt, c	5	2	3	12
Thrude, c	0	0	0	0
Gieran, g	1	1	4	3
Morrison, g	0	0	0	0
Larsen, g	2	0	4	4
Clopton, g	0	2	5	2
Carr, g	0	0	0	0
Totals	17	6	20	40

Coyotes Split with Spencer and Royal

CHAMBERS—Coach Tom Hutton's Chambers high Coyotes split a pair of cage encounters last week.

Spencer eked out a 42-40 triumph after the Coyotes had led for 3 periods—12-8, 25-19 and 35-34.

Spencer's Center Sharp lived up to his name. He bucketed 25 points. The Spencer-Chambers game was played Tuesday night, January 15, at Chambers.

On Friday night, January 18, also at Chambers, the home crew built an amazing 38-1 halftime lead over the hapless Royal team. Going into the final quarter the scoreboard read: Chambers 42, Royal 3. The game ended 49-8.

The Chambers reserves copped 2 wins while the varsity was splitting. The Spencer seconds bowed, 13-33; Royal scrubs went down, 15-53.

Boxscore Spencer game:

CHAMBERS (40)	fg	ft	pf	pts
Gribble, B.	0	0	1	0
Rowse, N.	6	1	2	13
Adams, R.	7	3	2	17
Hoffman	0	0	1	0
Young, S.	4	2	1	10
Totals	17	6	7	40
SPENCER (42)	fg	ft	pf	pts
Commet	0	0	2	0
Johnson	4	0	3	8
Sharp	12	1	1	25
Black	0	1	1	3
Patton	3	2	4	8
Totals	19	4	16	42

Boxscore Royal game:

CHAMBERS (40)	fg	ft	pf	pts
Atkinson, M.	1	0	0	2
Rowse, N.	5	0	0	10
Blair, D.	0	0	0	0
Adams, G.	3	1	2	7
Adams, R.	5	4	3	14
Tangeman, A.	1	0	0	2
Hoffman, D.	2	3	2	7
Pavel, E.	3	0	0	6
Farrier, J.	0	0	3	0
Totals	20	8	10	49
ROYAL (8)	fg	ft	pf	pts
Piersol	0	0	3	0
Francis K.	0	0	1	0
Jeivers	0	0	2	0
Peterson	3	0	3	6
Smith, R.	0	2	0	2
Minalike, jr.	0	0	0	0
Holm	0	0	4	0
Mattison	0	0	0	0
Erickson, D.	0	0	0	0
Hergert	0	0	0	0
Totals	3	2	13	8

STUART — The Stuart high Broncos absorbed a pair of setbacks on the cage floor last week.

They lost to Page, 36-52, on Tuesday night, January 15, and then bowed to the Keya Paha county Indians (Springview), 15-40, on Thursday night, January 17. The latter game was played at Springview.

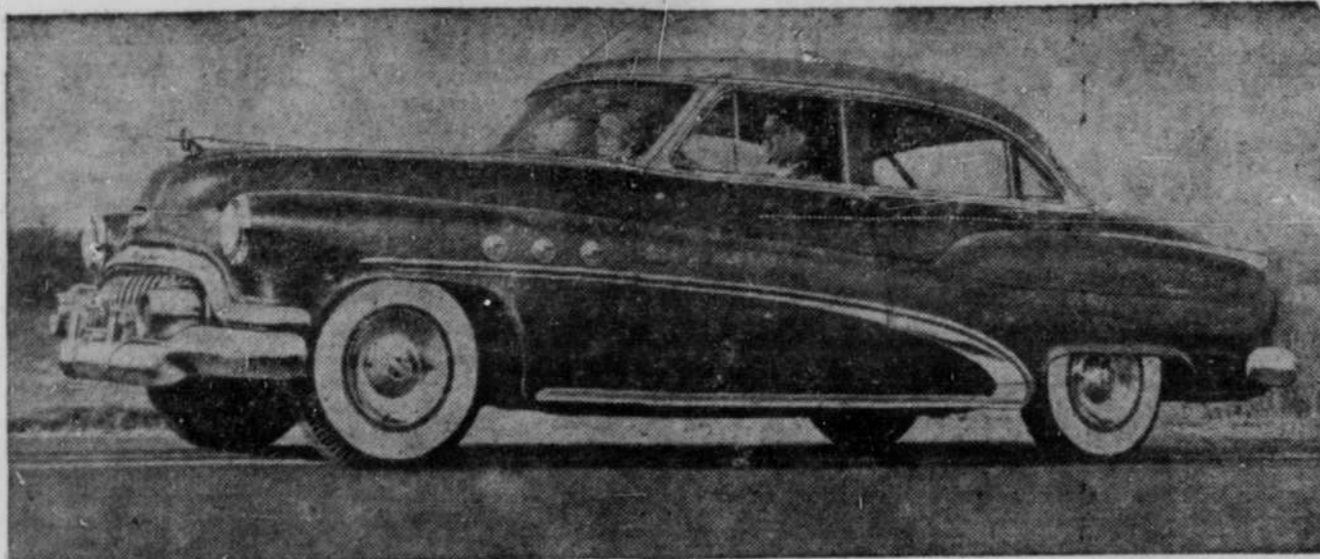
Page crashed the scoring column early in the 1st period in the game played at Stuart. At halftime the Eagles held a 28-14 margin. Ronnie Park led the offensive for the Page team with 16 points; Bob Sorenson tallied 11.

Costs, of Stuart, counted 17. In a prelim at Springview, the Stuart seconds copped a well-played thriller, 34-33.

Boxscore of Thursday's main event:

STUART (15)	fg	ft	pf	pts
Brewster, f	0	0	0	0
Nelson, f	0	0	1	0
Tielke, f	0	2	5	2
Peterson, f	0	0	0	0
D. Shald, f	0	0	0	0
Coats, c	2	1	2	5

Frontier for printing! Prompt deliveries!



There's more power and economy in the 1952 Buick, which went on display Saturday at the A. Marcellus Buick showrooms in O'Neill. Buick's popular 4-door Riviera sedan (above) in the Super Series features important new exterior styling changes and exquisite interior appointments.

O'Neill, St. Joe, Page Triumph

First Round Results: (Wednesday, January 23)
St. Joseph's 33 Inman 31
Page 59 Stuart 30
O'Neill High 51 Chambers 37

Tonight's Games (Thursday, January 24)
St. Mary's vs. St. Joe, 7 p.m.
Atkinson vs. Ewing, 8:30 p.m.

Friday Night
Winner of St. Mary's-St. Joe vs. winner of Ewing-Atkinson, 7 p.m.
O'Neill vs. Page, 8:30 p.m.

St. Joe 33; Inman 31
The plucky Inman high Tigers were ejected from the tourney in opening play after a seesaw struggle with the St. Joseph's hall Bluejays, of Atkinson. The Josies were in front 11-8 at the end of the initial stanza; Inman enjoyed a 5-point advantage—20-15—at intermission. The Josies moved ahead 26-25 as the third period ended.

Boxscore:

ST. JOE (33)	fg	ft	pf	pts
Gokke, f	4	1	4	9
Judge, f	2	1	2	5
Miller, f	1	0	4	2
Ries, c	1	1	2	9
Schmidt, G., g	1	0	1	2
Schmidt, C., g	2	2	4	6
Totals	13	7	17	33
INMAN (31)	fg	ft	pf	pts
Nielsen, H'd, f	4	5	2	13
Kelly, f	0	2	3	2
Sawyer, f	0	0	1	0
Coventry, c	2	3	2	7
Nielsen, H'n, g	1	1	1	3
Bohn, g	3	0	4	6
Totals	10	11	13	31

Page 59; Stuart 30
The Page Eagles grabbed a fat early lead and held a commanding advantage all the way—20-6 at the first quarter, 30-8 at halftime, 44-15 at the end of the third.

Boxscore:

PAGE (59)	fg	ft	pf	pts
Lamason, f	5	2	1	12
Heiss, f	0	0	1	0
Park, c	6	2	3	14
Leist, g	5	0	4	10
Christon, g	2	1	1	5
Sorenson, g	3	0	3	6
Zempel, f	5	2	2	12
Totals	26	7	15	59
STUART (30)	fg	ft	pf	pts
Brewster, f	3	1	2	7
Nelson, f	0	0	1	0
Tielke, f	2	2	2	6
Coats, c	0	2	0	2
Shald, g	1	0	3	2
Ulrich, g	4	5	3	13
Totals	10	10	11	30

O'Neill High 51; Chambers 37
The Chambers Coyotes trailed hot on the heels of the O'Neill Eagles during the first 2 periods of Wednesday's nightcap, but in the second half Coach Paul Baker's kids pulled away with the aid of some remarkable marksmanship on the part of Don Godel.

Godel, the nifty O'Neill forward, registered 24 points. O'Neill led 15-5 at the end of the first period, 23-18 at halftime, and 43-29 going into the final frame.

Boxscore:

O'NEILL (51)	fg	ft	pf	pts
Eby	2	0	5	4



—The Frontier Engraving

ON TOKYO LEAVE... Pfc. Ted L. Christensen (above) recently completed an 8-day leave in Tokyo, Japan. He is with the Third field hospital unit, APO 59, in Korea.

Private Christensen entered the service January 2, 1951. He took his infantry basic training at Ft. Riley, Kans. After a short furlough at home he was sent to Camp Stoneman, Calif., from where he embarked for overseas duty in May.

He landed at Asaka, Japan, and attended a medical school for 7 weeks. He then was sent to the hospital unit in Korea. This hospital has an average of 20,000 prisoners. Some of these prisoners are Chinese and the rest North Koreans. When these prisoners are able they are sent to an island off the Korean coast. Some are always kept back for labor. Private Christensen does much carpentering and painting in between work at the hospital. He is the son of Lewie Christensen and is a graduate of the Lynch schools.

Kileoin	1	1	3	3
Godel, D.	11	2	2	24
Buckmaster	5	4	1	14
Godel, V.	0	1	1	1
Calkins	1	0	1	2
Worth	1	1	3	3
Totals	21	9	16	51
CHAMBERS (37)	fg	ft	pf	pts
Gribble	3	1	7	7
Adams, E.	1	1	0	3
Young	4	2	1	10
Rowse	0	1	0	1
Adams, R.	5	5	3	15
Hoffman	0	1	1	1
Farrier	0	0	4	0
Totals	13	11	37	37

STUART (30)	fg	ft	pf	pts
Brewster, f	3	1	2	7
Nelson, f	0	0	1	0
Tielke, f	2	2	2	6
Coats, c	0	2	0	2
Shald, g	1	0	3	2
Ulrich, g	4	5	3	13
Totals	10	10	11	30

Frontier for printing!

WILLIAM W. GRIFFIN
ATTORNEY
First National Bank Bldg.
O'NEILL

Marcellus Shows Buick for 1952

Buick has introduced its 1952 line of cars and turned the spotlight on its new Airpower carburetor, described by Buick engineers as the greatest improvement in carburetion in a decade.

The O'Neill dealer is A. Marcellus, in whose showrooms the Buick for '52 was presented to the public Saturday for the first time.

The 1952 line, freshly restyled inside and out, includes 16 body styles in 4 horsepower ratings and 4 wheelbases. Eight models are offered in the Special Series and 4 each in the Super and custom-built Roadmaster Series.

The new 4-barrel Airpower carburetor, which is featured on the Roadmaster only, tops the list of engineering improvements for 1952. This carburetor, along with a change in manifolding and an increase in the compression ratio, boosts the horsepower output of the Roadmaster Fireball-eight engine to 170, and improves gasoline mileage and performance throughout the entire speed range. The compression ratio has been increased from 7.2 to 1 to 7.5 to 1.

Power steering, which takes most of the effort out of driving, is offered as an option on the Roadmaster. New and bigger front wheel brakes are featured on all models.

Improvements in body and engine mountings, and insulation, plus an even more generous use of sound deadener, make all 1952 Buicks quieter, adding to passenger comfort.

"We believe these improvements, coupled with our new styling features, make Buick the outstanding car value for 1952," said Ivan L. Wiles, general manager of Buick and vice president of General Motors.

Style-wise the 1952 Buick is new from every angle. New rear fender ornaments, smartly styled

in chrome, and a higher arc rear deck lid on the Super and Roadmaster Series, raise the silhouette of the rear section. The new trunk lid provides 7 per cent more room in the luggage compartment. Rear fender ornaments also are featured on the Special Series.

A restyled bumper-grille combination that retains that low, road-hugging effect characteristic of Buick styling, and handsome new sweepers moldings, add fresh beauty to the overall appearance of the car. Stainless steel rocker panel moldings previously featured on the Roadmaster only, have been added to all series.

New high luster, stainless steel wheel covers, embossed with the Buick emblem in the center, add a further touch of distinction to the 1952 line.

New and bigger front wheel brakes, designed for greater safety, give more braking capacity at points absorbing the greatest braking load. The width of the front wheel brakes on the Super and Special Series has been increased one-half an inch, to 2 1/4 inches. On the Roadmaster the width of the lining has been increased to 2 1/2 inches and the thickness has been increased 33 per cent. All brakes have full riveted linings, for longer life.

Dynaflo, which now has the unqualified approval of more than 1,000,000 Buick owners, continues as standard equipment on the Roadmaster and optional on the Super and Special.

Numerous changes also have been made in the interior appointments of the 1952 line, featuring many distinctive two-tone combinations in both leather and cloth. Steering wheels in red, green or blue, to match the interior colors, are featured on 5 models in the Roadmaster and Super Series, Mr. Marcellus said.

Pleasant Day Club Holds Card Party — All but 2 members and families of the Pleasant Day club met at the James Curran home on Friday night, January 18.

Visitors were Mr. and Mrs. Dale Curran and Judy, and Mrs. Gladys Richardson, who is a guest in the Blake Benson home. The evening was spent playing pitch, of which there were 7 tables. High score was won by Mrs. Albert Sterns and Dale Curran. St. Mary's vs. St. Joe, 7 p.m.

Schaffers to Mexico City — Mr. and Mrs. D. C. Schaffer returned Tuesday, January 15, from Ft. Worth, Tex., where they attended a stockmen's convention. While there they boarded a plane at Ft. Worth and flew to Mexico City.

Holt County Treasurer J. Ed Hancock had issued 3,615 sets of new 1952 license plates to motorists until late Wednesday, January 23. There are approximately 7,000 vehicles in the county, Hancock said.

O'Neill Cub Scouts Reorganize — At a meeting Thursday evening, January 17, a complete revision of the Cub Scout pack organization took place. After a general discussion of past pack operations, activities, advancement and parent interest, the following organization was established.

As a representative of the O'Neill Lions club, the sponsoring body of the Cub pack, Lester Jonas will again serve as institute representative. The newly-elected committee chairman is Herman Janzing.

Other officers: Neil B. Ryan, Cub master; Raymond Eby, assistant Cub master; Lloyd Cork, finance; Melvin Clyde, advancement.

Members of the activities committee are: Dean Jefferies, chairman; Charles Richter, Frank Searles and Levi B. Fuller.

The present group will hold monthly meetings, where direct planning with the den mothers will take place.

The present den mothers are: Mrs. Lester Jonas, Mrs. Sanford Gamel, Mrs. Verne Grenier, Mrs. C. Richter, Mrs. F. Searles, Mrs. O. Ross and Mrs. S. Steele.

If any additional mothers are interested in assuring their sons a real scouting experience contact H. J. Janzing, chairman.

The pack meetings each month will be held the third Thursday evening, courthouse annex basement.

TOO LATE TO CLASSIFY
WANTED: A used piano. —Mrs. Jerry Spittler, O'Neill. 38c

MILLER THEATRE
Atkinson, Nebr.
Fri.-Sat. Jan. 25-26
ALAN LADD
Branded
Mona Freeman, Charles Rogers

Sun.-Mon.-Tues. Jan. 27-28-29
Lucky Young
Rich and Young
and Pretty
Vic Damone, Herb Remick

Wed.-Thurs. Jan. 30-31
Inside
Straight
David Brian, Arlene Dahl

Commercial Printing . . .

FOR QUALITY PRINTING
SEE US!

- Letterheads
- Statements
- Bill Heads
- Invitations
- Announcements
- Catalogs
- Booklets
- Ruled Forms
- Sale Bills
- Posters
- Signs
- Directories
- Two and Three Color Circulars and Letters
- Advertising Photo Service
- Photo Service for Booklets and Circulars

IF IT'S PRINTED — WE HAVE IT!
Latest Printing Equipment
Quality Printing Service

The FRONTIER

IGA

LOW PRICES EVERY DAY!

EARL W. RALYA, Owner

Swan Floating Soap, lge. bar	10c
IGA Brand Apricot Nectar, 12-oz. tall can	13c
IGA French Dressing, 1/2-pt. btle.	21c
Gerber's Baby Cereals, pkg.	17c
IGA Brand, 150 Size Paper Towels, roll	20c
Ellis Chill Beans, 15 1/4-oz. can	15c
Waxed Sandwich Bags	10c
Van Camp's Special Rice, 15-oz. can	24c
Smucker's Pure Apple Jelly, 10-oz. glass	20c
Pink Grapefruit, 3 for	16c
Calif. Lemons, 3 for	14c
Spiced Luncheon Meat, lb.	48c
Pickle & Pimiento Loaf, lb.	49c

HEY! WHAT'S THE IDEA OF YOU TWO LOAFING HERE WHEN YOU SHOULD BE WORKING?

ONLY A SCREWBALL WOULD FISH THROUGH THE ICE IN SUCH WEATHER ANYWAY.

I'M SORRY, MR. TILLER. WE'LL GET RIGHT TO WORK!

WELL, YOU MIGHT AT LEAST HAVE THE COURTESY TO LEAVE A POLE AND SOME BAIT!