

**'Up to Taxpayers to Decide'—Berck**

"It is up to the taxpayers to decide if they want to vote on the increase in the gas tax and not up to the Farmers Union", Elton Berck, president of Nebraska Farmers Union, said Wednesday in answer to a request from State Sen. Don Thompson and 23 other state senators.

The request wanted Berck to withdraw his efforts toward cancelling the pending 1-cent gas

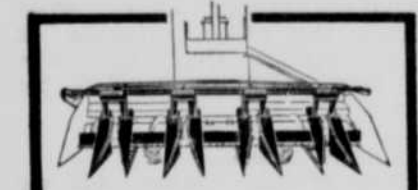
tax. "The union is interested in protecting the people's constitutional right to have a final vote on the vastly increased spending of one department of state government", Berck said.

"We may or may not agree with the voters' decision but the Farmers Union's effort is pledged to defend and preserve the right of decision through balloting," he added.

The senators' request states that a tax to finance roads needs further study by the legislature. It also says added revenue is now needed to build roads.

Berck said a study of high costs and efficiency of the department is long overdue and should have been made before a tax was added to meet an unproven need.

**HESSTON ROW CROP SAVER**



**SAVE UP TO 80%**

BRAND NEW PRINCIPLE picks up to 80% down moize—by actual field tests! For harvesting moize and other row crops. No real "slobber" or "heathered heads. Fits most combines.

SEE YOUR DEALER

PRODUCT OF HESSTON MANUFACTURING Co., Inc.

HESSTON • KANSAS

**Atokad Race Meets Underway Today**

**SOUTH SIOUX CITY**—Today (Thursday) the second season of racing gets underway at Atokad park, South Sioux City, with an eight-race card featuring some of the better horses. With over 800 horses at this meet, Racing Secretary Ralph Stubbs predicts many well matched races.

Racing will continue daily, except Sundays and Mondays, until October 19, with a 2 p.m. post time. Daily double windows close at 1:45 p.m.

The pari-mutal department has been improved with the latest equipment added assuring the public of quick and efficient service. The five-eighths mile track is in the finest of condition.



**\$3,500 Contribution Acknowledged**

Officers, directors and advisory committee members of the Save-the-Trains association met last Thursday at Stuart for an outdoor steak fry and conduct of routine business. It was announced by Secretary-Treasurer Ira L. Watson of Inman that all communities "except two or three" on the Omaha-Chadron line of the Chicago & North Western railroad had contributed 10 cents per capita to the running legal fight to retain the last two remaining passenger-mail-express trains 13 and 14. "Omaha livestock and other interests" recently turned \$3,500 into the fight. Seated (left-to-right): District Judge Lyle Jackson of Neligh, Fay C. Hill of Gordon and State Sen. Frank Nelson of O'Neill; back row—Lawrence Hamik of Stuart, Ira Ready of Stuart, Norbert Uhl of O'Neill, Mr. Watson, J. J. Moreland of Merriman and J. G. Brewster. Others who attended the meeting and were absent when picture was taken included District Judge D. R. Mounts, Dr. L. A. Burgess, K. L. VanVoorhis, Harry L. Peterson and Cal Stewart, all of O'Neill.—The Frontier Photo.

**CENTER UNION**  
C. P. Turner, minister  
Sunday, September 22, Sunday-school, 10 a.m.; preaching service, 11 a.m.; young people's meeting, 7:30 p.m.; preaching service following YP meeting.  
Prayer meeting and Bible study will be in the home of Mr. and Mrs. Otto Loring Wednesday evening at 8 o'clock.

**WESLEYAN METHODIST (O'Neill)**  
Rev. Don V. Olmsted, pastor  
Sunday, September 22: Sunday-school, 10 a.m.; worship, 11 a.m.; Wesleyan youth, 7:30 p.m.; adult Bible study, 7:30 p.m.; evening worship, 8 o'clock.  
Wednesday, September 25: Women's missionary society meets at the church at 2 p.m. for a devotional study; Mid-week prayer service in the evening at 8 o'clock.  
Sunday guests of Mr. and Mrs. J. B. Grady were Mr. and Mrs. Bill Marshall and family of Nebraska.

**COMMUNITY CAMPAIGN**

**JOIN NOW!**

**CONCERTS**

**Mon., Sept. 23 Thru Sat., Sept. 28**

O'Neill Community Concert Association Membership Headquarters

**Golden Hotel Lobby**

No Increase in Membership Fees!  
ADULTS \$6 — STUDENTS, \$3

Membership fee entitles holder to admittance to all O'Neill concerts PLUS free admission at Community Concerts in nearby cities—Valentine, Norfolk, Yankton, Columbus, Grand Island, etc.



**Todd Duncan Coming!**

- A "hold order" has been placed on Todd Duncan, baritone of "Porgy and Bess" fame.
- A "hold order" also on The Theater Men — a troupe of 10 singers excellent in popular American songs.
- Other top artists will be booked at the conclusion of the membership drive.

**INSURE A CARNEGIE HALL RIGHT HERE IN O'NEILL**

for the 1957-'58 Community Concert Season

**JOIN NOW!**

**A TAYLOR ANTENNA WILL BRING YOU BETTER PICTURES ON ALL CHANNELS**

CHANNEL 2, 3, 4, 5, 6, 7, 8, 9, 10, 11, 12, 13

IT'S "ANTENNA CHECK-UP TIME" CALL US TODAY... THERE IS NO OBLIGATION!

**PINKERMAN'S RADIO & TV**

O'NEILL PHONE 302

**CHRIST LUTHERAN (O'Neill)**  
Seventh and Clay Streets  
Rev. A. S. Gedwillo, pastor  
Saturday, September 21: All confirmation classes meet for instruction, 9:30 a.m.  
Sunday, September 22: Worship service, 9 a.m.; Sunday-school, 10:15 a.m.; W. Fricke, superintendent; The Lutheran Hour on WJAG, 4 p.m. Dr. Oswald Hoffman, the regular Lutheran Hour speaker will open the 25th season with this Sunday's broadcast.  
Tuesday, September 24: Sunday-school teachers' and staff meeting, 8 p.m. The new course of teacher-training will begin.

**IMMANUEL LUTHERAN (Atkinson)**  
Rev. A. S. Gedwillo, pastor  
Sunday, September 22: Sunday-school, 9:45 a.m.; S. H. Brauer, superintendent; worship service, 11 a.m.; The Lutheran Hour on WJAG, 4 p.m. Dr. Oswald Hoffman, the regular Lutheran Hour speaker, will open the 25th season with this Sunday's broadcast.

Frontier for printing!

**Church Notes**

**METHODIST (Page-Inman)**  
Lisle E. Mewmaw, pastor  
Friday, September 19 (to day): Women's Society of Christian Service meeting, 2 p.m.; junior choir practice, 4 p.m.; youth choir practice, 8 p.m.  
Sunday, September 22—Sunday-school, 10 a.m.; worship service, 11 a.m.; MYF, 8 p.m.  
Monday, September 23: Communion will meet at 8 p.m., followed by official board meeting.  
Wednesday, September 25: Prayer hour, 9 a.m. Read Mark 9:14-24.  
Friday, October 4: First quarterly conference.

**INMAN**  
Sunday, September 22: Morning worship, 9:45 a.m.; Sunday-school, 10:45 a.m.  
Wednesday, September 26—Women's Society of Christian Service meeting, 2:30 p.m.  
Thursday, October 3—First quarterly conference.  
Friday, October 5—Seventh annual fall festival.

**FOR BOTH CHURCHES**  
Friday, September 20—District conference at Randolph, beginning at 10 a.m. All church leaders and any others interested attend if possible.  
Sunday, September 29: District adult rally at Neligh for adults of all ages. Plan to attend.

**DANCE**

— AT —

**Ash Grove Hall**

**Sunday, Sept 22**

MUSIC BY —

**The Hi Fi**

Admission: 50c

**METHODIST (Chambers-Amella)**  
Harold Dean Bonath, pastor  
**AMELLA**  
Sunday, September 22: Worship service, 9:30 a.m.; Sunday-school, 10:30 a.m.  
September, Wednesday 25: WSCS, 1:30 p.m., at Phyllis Waldo's; parish prayer time, 8-9 p.m. Read Mark 11.  
Thursday, September 19: Choir and MYF, 7:30 p.m.  
**CHAMBERS**  
Sunday, September 22: Sunday-school, 10 a.m. worship service, 11 a.m.; senior MYF, 8 p.m.  
Monday, September 23: Junior choir, 7:30 p.m.; intermediate MYF, 8 p.m.; senior choir, 8 p.m.  
Wednesday, September 25: Parish prayer time, 8-9 p.m. Read Mark 11.  
Thursday, September 19: WSCS 2 p.m. at the church, hostesses, N. Fanquier and R. Woods.

**CHURCH OF CHRIST (O'Neill)**  
Rex James, evangelist  
Sunday, September 22: Bible school at 10 a.m.; preaching and communion at 11 a.m.; youth meeting at 7:30 p.m.; evening service, 8 p.m. The morning message will be: "If You Were In Jesus' Shoes" and the evening message will be "New Testament Priests".  
Wednesday, September 25: Prayer meeting and Bible study 8 p.m.  
A work day at the church property is planned for Wednesday, October 2.

Mr. and Mrs. Herb Kaiser and Mrs. Sadie Kaiser visited Francis Weller in Atkinson Sunday evening.

**It's a matter of record...**

**Consumers' NET EARNINGS are returned to YOU**

Operation of Consumers Public Power District is like that of a well-managed private business except for one thing: Consumers does not make a "profit" in the ordinary sense of the word.

Of course, through sound management, Consumers does earn a net over and above actual operating expenses. This net, instead of being divided as dividends among stockholders who have invested in the enterprise, is returned to all of the District's more than 117,000 customers in three ways:

- Through systematic bond retirements, increasing your equity in the system itself. Bond retirements at the end of 1956 totalled \$19,042,000.
- Through additions and improvements to the system. At the end of 1956, the District had paid for \$31,466,353 in additions and improvements out of earnings.
- Through rate reductions. Accumulated savings to the customers through rate reductions since the District was organized amounted to \$21,241,272 at the end of 1956.

Consumers is proud to serve as your efficiently-operated, self-supporting source of dependable low-cost electricity.

**LONG TERM**

**LOW RATE**

**LAND BANK FARM LOANS**

NFLA, owned by farmers—for farmers, saves you money when you borrow. Low interest rates. Dependable. Loans for most any constructive purpose.

For full information about a loan on your land, please contact:

**Elkhorn Valley NATIONAL FARM LOAN ASSN.**

O'Neill, Nebraska  
LYLE P. DIERKS, Secretary-Treasurer  
Member Federal Land Bank System



New Chevrolet Bel Air Sport Coupe with spunk to spare!

**Great to have—and only Chevy's got 'em!**

Chevrolet's the only leading low-priced car with any of these advances—the only car at any price with all of them!

**BODY BY FISHER.** You get more to be proud of in Chevrolet. No other low-priced car is quite so beautifully or substantially built down to the last detail.

**SHORTEST STROKE VS.** This helps explain Chevrolet's smooth and lively V8 ways. Short-stroke design also means less piston travel, longer engine life. Here's super-efficient power with plenty of vim and vigor!

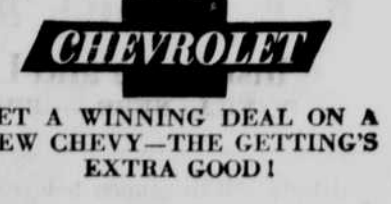
**STANDARD BALL-RACE STEERING.** Chevy's Ball-Race steering gear mechanism is virtually friction-free! That means easier parking, surer control, more relaxed driving.

**POSTRIGATION REAR AXLE\*.** When one rear wheel slips in mud, snow or ice, the wheel with the traction grips for sure going!

**TRIPLE-TURBINE TURBO-GLIDE\*.** The silkiest automatic drive anywhere! You move from standstill to top cruising speed in one gentle stream of motion. Special "Grade Retarder" position saves braking on hills.

P.S. Chevy's got the big "details," too! See all the exclusives at your Chevrolet dealer's!

\*Optional at extra cost



Only franchised Chevrolet dealers **CHEVROLET** display this famous trademark

**See Your Local Authorized Chevrolet Dealer**

**CONSUMERS PUBLIC POWER DISTRICT**

helping Nebraskans to live better...electrically