

Mon. — Wed. — Sat.

# THE FRONTIER

TWELVE PAGES

This Issue

North-Central Nebraska's BIGGEST Newspaper

Volume 76.—Number 36.

O'Neill, Holt County, Nebraska. Thursday, January 3, 1957.

Seven Cents



The Clydes . . . both enjoy good health. —The Frontier Photo.

## Clydes Wed 50 Years; Celebration Belated

### Baby Derby On; No Contenders

### Gift Shower Awaits First-Comer

No signs of the storm! That was the word late Wednesday from a survey of the O'Neill and Atkinson hospitals. All of which means the race is a free-for-all and some lucky little fellow (or gal) will cash in on a host of gifts being provided by O'Neill merchants in cooperation with the Frontier.

### Judge Gets Salary Boost on Population

Holt County Judge Louis W. Reimer will receive a \$1,100 increase in annual salary by virtue of the new population figures adopted by the Holt county board of supervisors in session last week.

### 4 Enlistments in Army Announced

The following army enlistments from this area have been announced by the recruiting office at O'Neill:

## Mrs. Biglin Dies at 69; Rites Held

### Widow 111 3 Years; Member of Early Graduating Class

Mrs. Constance F. Biglin, 69, widow of the late Frank J. Biglin, died at 10:15 p.m., Thursday, December 27, in St. Anthony's hospital at O'Neill. She had been hospitalized four days but had been in failing health about three years.

## Student, 18, Hurt When Car Overturns

### Francis Doty Suffers Fractured Pelvis

SPENCER—Francis Doty, 18, Spencer high school student and son of Mr. and Mrs. Arthur Doty of O'Neill, is in "good" condition at Sacred Heart hospital at Lynch.

## Mrs. Biglin . . . born and reared in O'Neill community.

where she graduated in 1907—a member of one of the early graduation classes.

## Auto Strikes Deer Near Journey's End

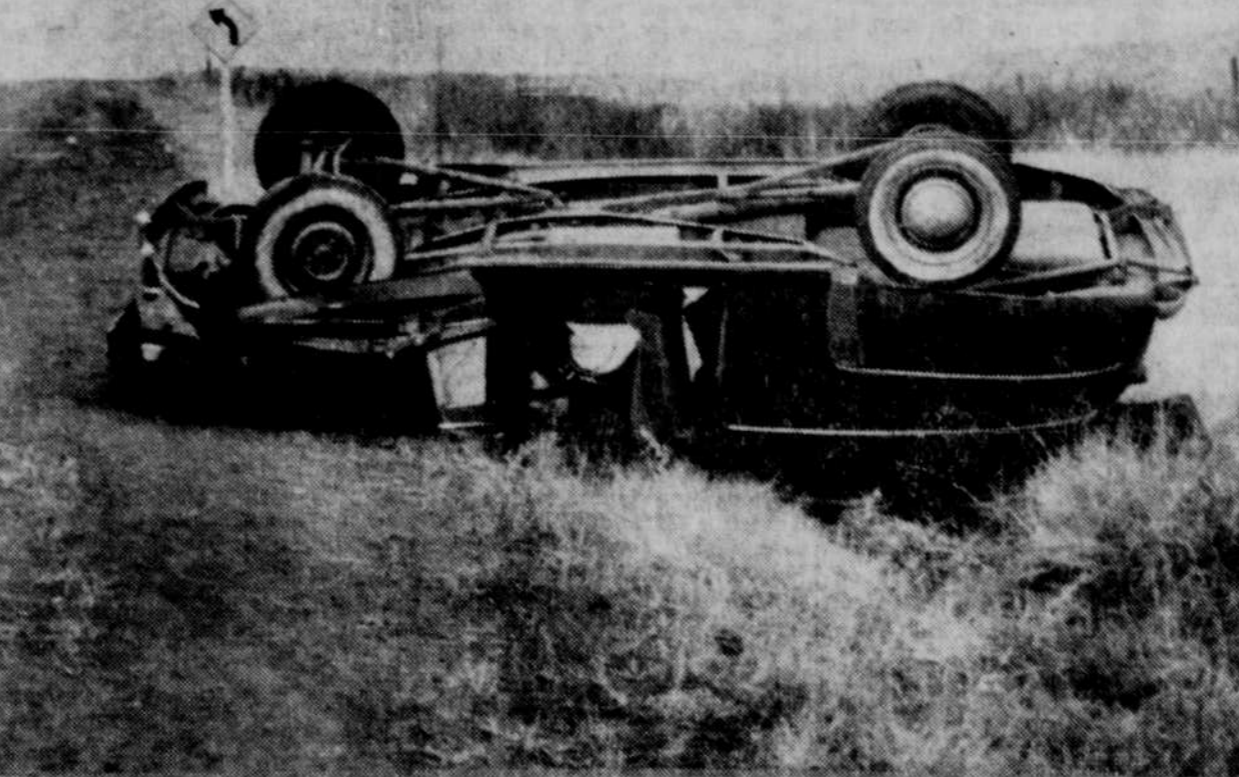
INMAN—Mr. and Mrs. James Banks and family returned Saturday from Clinton, Ia., where they visited their son and family for the week.

## Former Inman Resident Dies

INMAN—Mrs. Bessie M. Bentz, 63, of Valley, died last week at Valley. Her maiden name was Bessie Goree and she lived here a young woman.

## Mrs. Lorenz's Mother Dies in Kansas

Mrs. Lorenz's mother, Mrs. Hattie Bowles of Jewell, Kans., died Sunday morning. The funeral was held Wednesday at 2 p.m. She is the mother of Mrs. Vernon Lorenz of O'Neill. Her husband is also deceased.



The Doty car . . . badly wrecked, it overturned 2 1/2 times.—The Frontier Photo.

## Student, 18, Hurt When Car Overturns

### Francis Doty Suffers Fractured Pelvis

His car overturned about 1:30 a.m., new year's day on U.S. highway 281 curve about three-fourths of a mile southeast of Spencer.

## D-X Station Under New Management

D. D. DeBolt (left) has leased the recently-completed D-X Service Station at the corner of Sixth and Douglas streets from Jack Arbuthnot, who will continue to operate the bulk delivery.

## Michael Lee Day, 6-Weeks-Old, Dies

CHAMBERS—Michael Lee Day, 1 1/2-month-old son of Mr. and Mrs. Richard D. Day, who reside 12 miles southwest of Chambers, died Thursday, 27, at the farm home.

## Polio Victim Is Back in Hospital

CHAMBERS—Miss Carolyn Wintermute, the Nebraska Wesleyan university freshman from Chambers who was stricken with polio and was given permission to spend the Christmas holidays at home, has reentered Bryan Memorial hospital at Lincoln.

## Butte Couple Wedded 50 Years

BUTTE—Mr. and Mrs. J. B. Roush, who live south of Butte, celebrated their golden wedding anniversary Sunday, December 30. Two hundred eighty persons signed the guest book during the reception between 2:30 and 4 o'clock.

## Haynes Family Partial to 'L'

When little Larry Allen Haynes was born Sunday, December 30, at St. Anthony's hospital here, he became a "first" in the family and he also helped perpetuate a family tradition.

## Weatherman Smiles On Yule Travelers

Travelers during the Christmas holidays were blessed with ideal weather conditions, often more like early fall than winter. Highways were in excellent condition and no icy stretches were reported.

## Cardinals, Eagles Ready to Resume

The city's two high school basketball teams will resume play on their 1956-57 schedules. The St. Mary's academy Cardinals will entertain the high-scoring Center team here Friday night.

## Miss Lewis . . . reigns as American dairy princess.

Five speakers, well-qualified to discuss the Nebraska Dairy picture, are scheduled on the afternoon program which will start at 1 p.m. The speakers and their subjects are as follows:

## Dairy Princess to Appear at Clinic

A dairy clinic will be sponsored by the agricultural committee of the Norfolk Chamber of Commerce at the Norfolk city auditorium, Thursday, January 10.

## Auto Strikes Deer Near Journey's End

INMAN—Mr. and Mrs. James Banks and family returned Saturday from Clinton, Ia., where they visited their son and family for the week.

## Former Inman Resident Dies

INMAN—Mrs. Bessie M. Bentz, 63, of Valley, died last week at Valley. Her maiden name was Bessie Goree and she lived here a young woman.

## J.R. Russell Is Fatally Stricken

PAGE—Funeral services were held at 2 p.m. Monday afternoon, December 31 at the Page Methodist church for Judson R. ("Jud") Russell, 82, who died Friday, December 28, of a heart attack suffered as he was returning home from the post office.

## Weatherman Smiles On Yule Travelers

Travelers during the Christmas holidays were blessed with ideal weather conditions, often more like early fall than winter. Highways were in excellent condition and no icy stretches were reported.

## Cardinals, Eagles Ready to Resume

The city's two high school basketball teams will resume play on their 1956-57 schedules. The St. Mary's academy Cardinals will entertain the high-scoring Center team here Friday night.

## Miss Lewis . . . reigns as American dairy princess.

Five speakers, well-qualified to discuss the Nebraska Dairy picture, are scheduled on the afternoon program which will start at 1 p.m. The speakers and their subjects are as follows:

## Dairy Princess to Appear at Clinic

A dairy clinic will be sponsored by the agricultural committee of the Norfolk Chamber of Commerce at the Norfolk city auditorium, Thursday, January 10.

## Auto Strikes Deer Near Journey's End

INMAN—Mr. and Mrs. James Banks and family returned Saturday from Clinton, Ia., where they visited their son and family for the week.

## Former Inman Resident Dies

INMAN—Mrs. Bessie M. Bentz, 63, of Valley, died last week at Valley. Her maiden name was Bessie Goree and she lived here a young woman.

## J.R. Russell Is Fatally Stricken

PAGE—Funeral services were held at 2 p.m. Monday afternoon, December 31 at the Page Methodist church for Judson R. ("Jud") Russell, 82, who died Friday, December 28, of a heart attack suffered as he was returning home from the post office.

## Weatherman Smiles On Yule Travelers

Travelers during the Christmas holidays were blessed with ideal weather conditions, often more like early fall than winter. Highways were in excellent condition and no icy stretches were reported.

## Cardinals, Eagles Ready to Resume

The city's two high school basketball teams will resume play on their 1956-57 schedules. The St. Mary's academy Cardinals will entertain the high-scoring Center team here Friday night.

## Miss Lewis . . . reigns as American dairy princess.

Five speakers, well-qualified to discuss the Nebraska Dairy picture, are scheduled on the afternoon program which will start at 1 p.m. The speakers and their subjects are as follows:

## Dairy Princess to Appear at Clinic

A dairy clinic will be sponsored by the agricultural committee of the Norfolk Chamber of Commerce at the Norfolk city auditorium, Thursday, January 10.

## Auto Strikes Deer Near Journey's End

INMAN—Mr. and Mrs. James Banks and family returned Saturday from Clinton, Ia., where they visited their son and family for the week.

## Former Inman Resident Dies

INMAN—Mrs. Bessie M. Bentz, 63, of Valley, died last week at Valley. Her maiden name was Bessie Goree and she lived here a young woman.

## J.R. Russell Is Fatally Stricken

PAGE—Funeral services were held at 2 p.m. Monday afternoon, December 31 at the Page Methodist church for Judson R. ("Jud") Russell, 82, who died Friday, December 28, of a heart attack suffered as he was returning home from the post office.

## Weatherman Smiles On Yule Travelers

Travelers during the Christmas holidays were blessed with ideal weather conditions, often more like early fall than winter. Highways were in excellent condition and no icy stretches were reported.

## Cardinals, Eagles Ready to Resume

The city's two high school basketball teams will resume play on their 1956-57 schedules. The St. Mary's academy Cardinals will entertain the high-scoring Center team here Friday night.

## Miss Lewis . . . reigns as American dairy princess.

Five speakers, well-qualified to discuss the Nebraska Dairy picture, are scheduled on the afternoon program which will start at 1 p.m. The speakers and their subjects are as follows:

## Dairy Princess to Appear at Clinic

A dairy clinic will be sponsored by the agricultural committee of the Norfolk Chamber of Commerce at the Norfolk city auditorium, Thursday, January 10.

## Auto Strikes Deer Near Journey's End

INMAN—Mr. and Mrs. James Banks and family returned Saturday from Clinton, Ia., where they visited their son and family for the week.

## Former Inman Resident Dies

INMAN—Mrs. Bessie M. Bentz, 63, of Valley, died last week at Valley. Her maiden name was Bessie Goree and she lived here a young woman.

## Classes Resume

Students at O'Neill high school trekked back to their classes Wednesday after the yule holiday vacation. St. Mary's academy students will resume today (Thursday).