

KUBIK

KUBIK

FARM AND LAND AUCTION

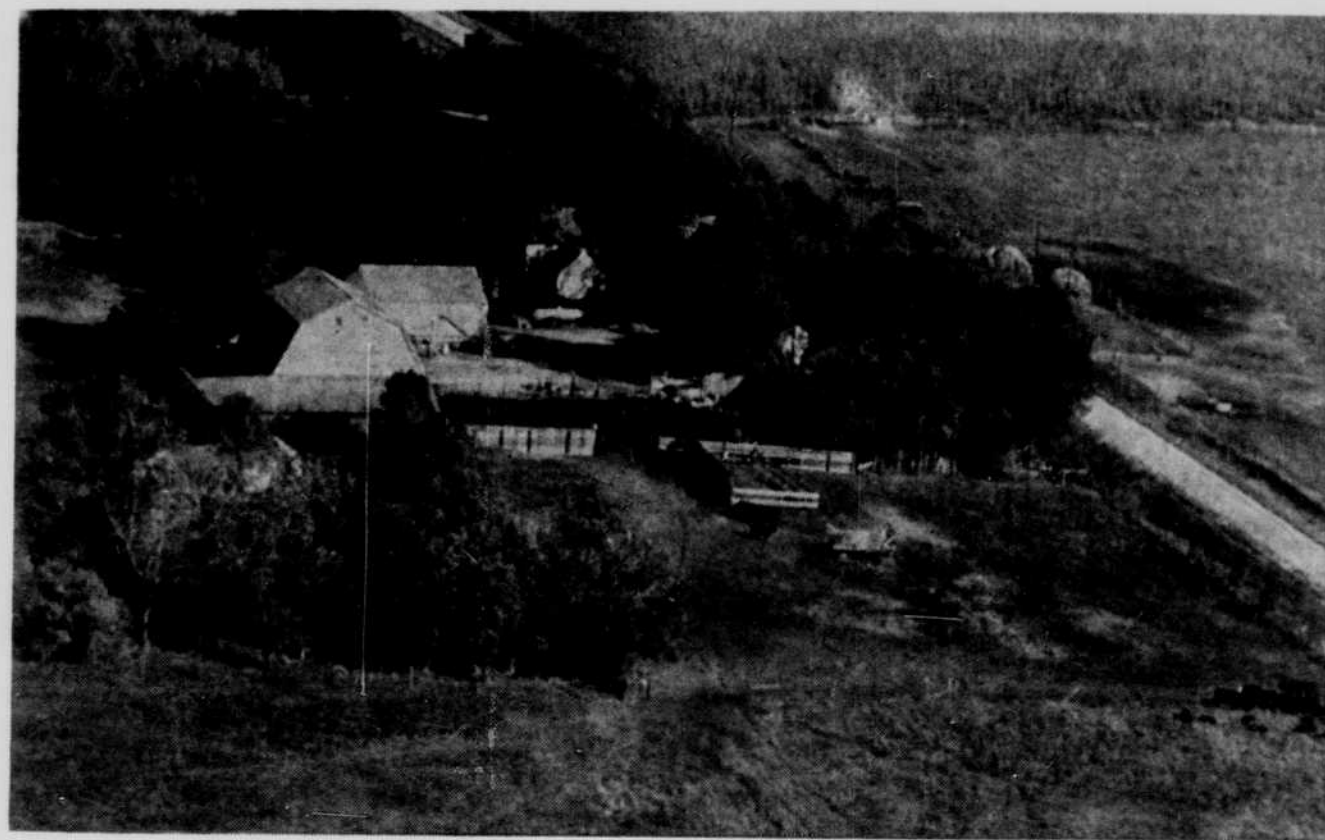
Because of my health I am quitting the farm and offering at public auction the following described personal property and land at the place LOCATED . . . from O'Neill 11 miles east, 10 north, 3 east and 1 north . . . OR . . . from Redbird, 10 south, 4 east and 1 north . . . OR . . . from Verdigre, 15 west and 2 north (Watch for Farm Sale Arrows) on . . .

Monday, October 22

Sale starts at 11:30 a.m.

Lunch by Ash Grove Ladies Auxiliary

360 Acre Land Sale



Farm consists of 360 acres of land on a well-balanced plan with about 170 acres under cultivation and in alfalfa. Rest is pasture, hay meadow and building site. The operator has followed the best of rotation plans and this year's crop will prove it to the prospective buyer.

The place is well fenced and cross-fenced. Excellent winter protection for live stock. Water system underground from supply tank to yards, dwelling and pasture across the road. Makes an ideal stock and grain farm set up. This property invites your closest inspection and must be seen to be appreciated.

Improvements include good telephone service, mail route past the house, on REA, only 2 miles to new school. Anyone wishing to inspect the premises may see the owner who lives on the place or contact Ed Thorin, O'Neill, licensed real estate broker.

BUILDINGS INCLUDE: 4 bedroom home with large living room, kitchen, enclosed porch, part basement, steel cupboards and sink in kitchen. Water piped to house; barn 40 x 40 with hay mow and 12-ft. lean-to on two sides; 14 x 28 poultry house; poultry houses, 14 x 10 and 10 x 12; 32 x 30 crib; 14 x 18 wash house and summer kitchen, new, gas heater in house; 20 x 20 garage, wired with 210.

VERY LIBERAL TERMS: Owner wants small down payment and will carry the balance. Payments will be arranged at sale. All 1962 and prior taxes will be paid by seller. Warranty deed and abstract will be guaranteed. **IMMEDIATE POSSESSION UPON SETTLEMENT**

MACHINERY AND MISCELLANEOUS

Auctioneer's Note: This is an outstanding line of machinery, kept in an excellent condition and ready to go. It invites your discriminating inspection.

Duncan loader with mounts for John Deere

John Deere go-dig, like new
J. D. 12-ft. rake, good
7 1/2-ft J. D. one-way power troll
Farm Hand loader, hay basket, pushoff, grapple fork, Like new

Wagon hoist
Winch for Oliver 77 or 88
Dehorning chute, like new, made by Kramer

Loading chute
McCormick Deering trail mower
300 gallon fuel tank on stand with hose and nozzle. All like new

McCormick Deering power wash separator, like new

1/2-in. electric drill
2 - 1/4-in. electric drills
Garden hose
Several long heavy duty extension cords

1956 Oliver Super 88 tractor, excellent condition, good rubber
1956 AC WD 45 tractor, excellent condition, good rubber

J. D. 8-ft. drill
J. D. 12-ft. windrower
36-ft. Kelly Ryan elevator
15-ft. J. D. disc, good
2 - New single horse rye drills
J. D. No. 8 mower, like new
AC mounted 2-row cultivator, good

New Quincy compressor with 2 spray paint guns
Sickle grinder, complete with motor
2 - 40-ft. endless belts
Bench grinder
Pump jack with 3/4 h. p. motor
Portable air tank
2 - Centrifugal pumps & motors
Several fuel barrels
Extra canvas for 12-ft. windrower
2 - rolls wire cribbing

2 - Hydraulic jacks
Electric fence
Brooder stove, fuel
Set thread cutters
Pipe threader 1/2-in. to 1 1/4-in., nearly new
J. D. power take off tire pump
Electric soldering iron
1-ton chain hoist
Dehorner
2 - Rolls wire cribbing
Complete set of excellent shop tools, a really outstanding collection
Registered Brand - Lazy K Bar on left hip

1951 John Deere A tractor. Only 100 hours after complete major overhaul, on good rubber
1950 Oliver self-propelled combine, 12 ft. with cutter bar, pickup attachment and reels. In good condition and on good rubber
AC mounted picker. Used two seasons
Oliver 2-row lister on rubber
New Idea spreader on rubber, like new

Underlung, completely rebuilt, with heavy duals
Fairbanks-Morse hammermill
J. D. wagon, flare box, on rubber
14-ft. feed bunk, near new
New electric gear on rubber
Steel gear

250 Pulletts just coming into production
250 Hens
Full line of poultry equipment including steel nests, electric heaters, waterers and feeders

2 - rolls wire cribbing
2 - 40-ft. endless belts
Bench grinder
Pump jack with 3/4 h. p. motor
Portable air tank
2 - Centrifugal pumps & motors
Several fuel barrels
Extra canvas for 12-ft. windrower
2 - rolls wire cribbing

87 HEAD OF CATTLE
17 - Black cows 4 to 7 years old.
5 are milk cows, milking now
Heifer coming with 1st calf
Heifer coming with 2nd calf
17 spring calves
Registered Angus bull
50 Angus cows, some are pure-bred, owned by E. J. Revell

250 Pulletts just coming into production
250 Hens
Full line of poultry equipment including steel nests, electric heaters, waterers and feeders

250 Pulletts just coming into production
250 Hens
Full line of poultry equipment including steel nests, electric heaters, waterers and feeders

250 Pulletts just coming into production
250 Hens
Full line of poultry equipment including steel nests, electric heaters, waterers and feeders

POULTRY AND EQUIP.

250 Pulletts just coming into production
250 Hens
Full line of poultry equipment including steel nests, electric heaters, waterers and feeders

BUILDINGS

3 - Brooder houses, 10 x 14, 10 x 12 and 12 x 12, two are like new

HOUSEHOLD GOODS

25,000 BTU propane space heater
65,000 BTU propane space heater
1,000 gallon propane tank
Chrome dinette set
2 - beds with springs and mattresses
Chest
Buffet
Double barrel shotgun
Remington .22 rifle
Other miscellaneous articles

HAY AND GRAIN

400 bu. Nemaha oats, clean
65 acres, more or less, of corn in field
7 stacks good new prairie hay
8 stacks alfalfa new
2 stacks old alfalfa
6 stacks 1961 prairie hay
29 Head OF HOGS
29 Choice feeder pigs

TERMS: CASH. No property to be removed until settled for

Joe and Rose and George

KUBIK

Ed Thorin, O'Neill, and Rudloff Bros., Verdigre, auctioneers

First National Bank, O'Neill, clerk

Delinquent Tax List		
Continued from Previous Page		
Township	Range	Page
Township 30, Range 16		
NW 1/4	4	
NE 1/4	5	121.80
SE 1/4	5	130.70
NE 1/4	6	116.26
SE 1/4	6	148.48
Pl. SW 1/4 NW 1/4	6	*24.62
NE 1/4	10	
Pl. NE 1/4 NW 1/4	11	410.96
Pl. NW 1/4	11	375.02
NE 1/4	11	368.02
SE 1/4	12	
NE 1/4 NW 1/4	13	423.40
Township 30, Range 16		
Description	Sec.	Tax
S 1/2 NW 1/4	13	118.08
N 1/2 SE 1/4	13	70.30
N 1/2	14	1186.52
NW 1/4	21	112.66
N 1/2	29	122.22
N 1/2	30	157.82
W 1/2	36	241.56
Township 31, Range 16		
Description	Sec.	Tax
S 1/2 SW 1/4, E 1/2	11	87.30
N 1/2 NW 1/4	3	
E 1/2	3	
N 1/2 NW 1/2	10	69.56
SW 1/4	7	181.66
N 1/2 NW 1/4, N 1/2 SW 1/4	11	35.84
SW 1/4	17	61.38
All	23	188.25
N 1/2	25	284.06
NW 1/4 & E 1/2	27	
NE 1/4	28	
SW 1/4	33	181.08
SE 1/4	34	87.96
NW 1/4	28	*241.56
Stuart Village		
Lot	Blk.	Tax
Pl. 8 all 9	1	103.04
1	3	132.31
14	4	623.34
17 - 18	4	202.76
19 - 20	4	521.50
22	4	56.80
1	5	180.08
Pl. 2 all 3 - 4	5	238.66
5	5	292.46
7 - E 1/2 8	5	65.22
Pl. Outlot B		25.42
Pl. Outlot B		8.20
Pl. Outlot B		129.04
Outlot C except N 135 ft.		252.42
N 135 ft. Outlot C		106.46
Outlot D		62.02
Hallock's Addition		
7	6	*427.35
15	6	144.40
9-10	7	*257.20
E 26 ft 11	7	84.46
13	7	331.08
19	7	*156.11
20 - 21	7	155.28
Pl. 5 all 6	11	381.42
Pl.	12	*515.06
Pl. Outlot G		734.35
Part of Outlot N		
N 90 ft. of N 180 ft 1.	L	582.14
S 60 ft. 2	L	138.96
3 - 4 - 5	L	255.30
S 180 ft 8	L	206.14
Carberry Addition		
1 - 2 - 3 - 4	C	25.42
5 - 6 - 7 - 8	C	188.36
9 - 10 - 11 - S 1/2 12	C	188.90
N 1/2 12 - 13 - 14	C	178.88
9 - 10	D	*565.14
Western Townlot Co. Add.		
1	1	93.00
5 & W 1/2 6	1	811.14
1 - 2	3	217.00
Kimball & Blairs Addition		
S 1/2 5 all 6	13	87.06
E 1/2 15-16 & 17	15	484.61
20	15	144.08
3	16	66.56
1 - 2 - 3 - 4	17	110.80
5 - 6	17	237.28
8 - 9	18	231.78
W 1/2 15 & 16	18	228.84
E 1/2 15 & 16	18	239.80
4	19	228.34
Hallock 2nd Addition		
1 - 2 - 3 - 4	1	41.46
3 - 4 - 5 - 6	1	*155.32
7 - 8	1	6.86
1 - 2	3	36.00
3 - 4	3	*553.72
1 - 2	5	*542.82
W 1/2 6 & 7	7	67.48
5 to 11 Inc.	8	157.28
9 - 10 - 11	9	140.42
10	10	201.60
E 1/2 1 & 2	10	274.52
8	11	220.64
6 - 7 - 8	11	152.76
11	12	113.98
6 - 7	13	22.70
4 - 5	13	379.60
15 - 16 - 17	14	105.36
1 - 2 - 3 - 4	15	13.68
8	15	40.58
9	15	*744.34
10	15	25.87
11 - 12 - 13 - 14	15	*569.80
16 - 17	15	118.64
21 - 22	15	197.30
23 - 24	15	*454.18
25 - 26 - 27 - 28	15	290.63
1 - 2 - 6 to 16	16	139.32
1 to 6 & N 1/2 7	18	*289.48
N 25 ft 10, 11 to 16	18	33.26
1	19	
P. T. S. Co. Addition		
9	22	149.84
10	22	53.12
11	22	37.46
12	22	122.60
13	22	98.02
11 - 12	23	*1,039.28
11 - 12	23	*583.48
All	26	53.58
1 to 6 Inc.	30	21.78
9-10-11-12	30	330.54
1 to 12	32	17.76
7-8-9	34	542.16
1 to 12	35	22.36
4-5-6	36	34.50
Pl.	40	*154.94
Swan Precinct		
Township 25, Range 15		
SW 1/4, SW 1/4 SE 1/4	21	
SE 1/4, W 1/2	28	295.85
E 1/2 E 1/2	29	
E 1/2 NE 1/4, NE 1/4 SE 1/4	32	33.78
W 1/2 NW 1/4, NW 1/4 SW 1/4	33	
NE 1/4, N 1/2 NW 1/4	34	140.88
SE 1/4 NW 1/4		
Township 26, Range 15		
N 1/2 NE 1/4, SE 1/4 NE 1/4	13	
NE 1/4 SW 1/4	13	63.21
N 1/2 SE 1/4, SE 1/4 SE 1/4	13	
Township 26, Range 16		
SE 1/4, E 1/2 SW 1/4	4	
NE 1/4, NE 1/4 NW 1/4	9	
S 1/2 NW 1/4	9	202.92
N 1/2 SE 1/4, SE 1/4 SE 1/4	9	
All	15	
NW 1/4 NW 1/4	5	
W 1/2, N 1/2 NE 1/4	6	114.48
N 1/2 NW 1/4	7	99.65
All	10	9.56
W 1/2 SW 1/4	11	
W 1/2 W 1/2	13	
All	14	219.04

Verdigris Precinct		
Township 28, Range 9		
Description	Sec.	Tax
NE 1/4	1	69.35
NW 1/4	1	111.61
NW 1/4	2	254.78
SE 1/4	3	246.14
SW 1/4	3	298.18
SE 1/4	9	314.36
SW 1/4 NE 1/4, W 1/2	12	358.76
SE 1/4	13	126.88
W 1/2	13	260.10
NW 1/4	14	235.70
SE 1/4	14	*806.58
NE 1/4	15	180.18
SE 1/4	15	502.92
NE 1/4, E 1/2 SW 1/4		
W 1/2 SE 1/4	16	266.77
E 1/2 SE 1/4	16	119.58
Pl. SW 1/4 NW 1/4	18	5.08
SE 1/4 NW 1/4, NE 1/4 SW 1/4		
SE 1/4, S 1/2 NE 1/4	19	406.32
NW 1/4	20	168.12
NE 1/4	22	229.96
NW 1/4	22	250.60
NW 1/4	27	
NE 1/4	28	439.76
SW 1/4	28	189.88
E 1/2 SE 1/4	29	100.70
SE 1/4	28	
E 1/2 E 1/2	33	120.87
W 1/2 & W 1/2 SE 1/4	29	306.72
NW 1/4	30	138.32
NE 1/4 NE 1/4	32	51.62
S 1/2 NE 1/4, N 1/2 SE 1/4	32	44.10
S 1/2 SE 1/4	32	27.30
W 1/2 SE 1/4, SW 1/4	33	96.26
S 1/2	34	258.54
Township 28, Range 10		
NE 1/4	1	265.20
NW 1/4	1	203.32
NW 1/4	3	177.62
SW 1/4	10	158.62
N 1/2 NW 1/4, No. 8		
Pl. SE 1/4 NW 1/4	13	162.72
Pl. S 1/2 SE 1/4 SE 1/4 18,		
Pl. S 1/2 NW 1/4 SE 1/4 17	13	74.88
W 1/2 SW 1/4	15	*269.20
E 1/2	23	294.36
NE 1/4	24	150.38

Page Village		
Township 28, Range 9		
Description	Sec.	Tax
Pl. SW 1/4 NW 1/4 M	18	76.94
Pl. NW 1/4 SW 1/4 N & T	18	52.44
Pl. NW 1/4 SW 1/4 K	18	108.84
Township 28, Range 10		
Lot	Blk.	Tax
Pl. SE 1/4 NE 1/4	13	66.90
Lots 3-4	4	*45.56
N 62 ft. 5 to 10	1	*14.02
1 - 2	2	*200.10
16-17-18	2	11.40
6 to 10	3	