

## Church Notes



All ministers are invited to send their church notes to The Frontier. For guaranteed publication, we ask that the notes are in our office by Saturday, one week prior to the services.

**St. Patrick's Catholic Church**  
(Msgr. Timothy O'Sullivan and Father Robert Duffy, assistant)  
Sunday: Masses, 7:30, 9 and 10:30 a.m.  
Saturday: Confessions from 4 until 5:30 p.m. and from 7:30 p.m. until 9 p.m.  
Masses in the church every day at 7:45 a.m.

**FIRST CHRISTIAN CHURCH**  
505 East Williams  
Sunday: Bible school, 10 a.m.;  
Worship and communion, 11 a.m.

**Immanuel Lutheran Church**  
Atkinson  
(The Rev. A. S. Gedwillo)  
Saturday: 1:30 p.m., Confirmation class.  
Sunday: 9 a.m., Divine worship and Holy Communion. Announcements are by registration. 10:15 a.m., Sunday school.  
Monday: 8 p.m., Annual meeting of the voting assembly.  
Tuesday: 7:30 p.m., Jr. choir. 8:30 p.m., Sunday school staff.

**Church of Epiphany**  
Emmet  
(Father Ralph O'Donnell)  
Masses at 8:30 a.m. the first, third and fifth Sunday of each month; at 10:30 on the second and fourth Sundays.

**Wesleyan Methodist Church**  
(Rev. Berniece Hubby, Pastor)  
Sunday: Sunday school, 10 a.m.; morning worship 11 a.m.  
Monday: Wesleyan Youth; evening worship, 8 p.m.  
Wednesday: Prayer hour, 8 p.m.

**Page Methodist Church**  
(The Rev. Robert Linder)  
Sunday: Church school, 10 a.m.; worship 11 a.m.  
Wednesday: Choir and MYF, 7 p.m.  
Thursday: WSCS, 2 p.m.

**Center Union Church**  
Sunday: Morning worship, 10 a.m.; Sunday school, 11 a.m., and Christian Endeavor, 7:30 p.m.  
Wednesday: Cottage prayer service, 8 p.m.

**Bethany Presbyterian Church**  
(The Rev. John Hart)  
Sunday: Worship, 9:30 a.m., Sunday school, 10:30 a.m.

**St. Joseph's Church**  
Amelia  
(Father Ralph O'Donnell)  
Masses at 10:30 a.m. the first, third and fifth Sundays of each month; 8:30 a.m. on the second and fourth Sundays.

**Wesleyan Methodist Church**  
Page  
(The Rev. Mina Smith)  
Sunday: Sunday school, 10 a.m.; worship, 11 a.m.; WY service, 7 p.m.; evening service, 7:30 p.m.  
Wednesday: Choir, 7 p.m.; prayer meeting, 7:30 p.m.

**Inman Methodist Church**  
(The Rev. Robert Linder)  
Sunday: Church school, 8:40 a.m.; worship, 9:40 a.m.  
Wednesday: Choir and MYF, 8 p.m.

**Methodist Church**  
Chambers  
(The Rev. Charles Cox)  
Sunday: Sunday school, 10 a.m.; worship, 11 a.m.

**Emmet Methodist Church**  
(The Rev. Glenn Kennicott)  
Sunday: Sunday school, 9 a.m.; morning worship, 9:45 a.m.

**First Methodist Church**  
The Rev. Glenn Kennicott)  
Thursday: Prayer group, 10 a.m.; Dorcas, 2 p.m.  
Friday: Senior Youth Fellowship breakfast, 8 a.m.; Mid-winter Institute at Wayne closes.  
Sunday: Church school, 9:45 a.m.; morning worship, 11 a.m.  
Wednesday: Junior choir, 4 p.m.; Senior choir, 8; Youth Fellowship, 7 p.m.

SEE Bankerslifeman —  
**Ernie Brinkman**  
IN ATKINSON  
About a Home Protection Plan  
BANKERS LIFE COMPANY  
DES MOINES, IOWA

**THE CHRISTIAN SCIENCE MONITOR**  
AN INTERNATIONAL DAILY NEWSPAPER

Good Reading for the Whole Family  
• News  
• Facts  
• Family Features

The Christian Science Monitor  
One Newbury St., Boston 15, Mass.  
Send your newspaper for the free trial. Business find my check or money order. 1 year \$20 □  
6 months \$10 □ 3 months \$6 □

**Church of Christ**  
Robert Granger  
Sunday morning Bible classes 10:00 a.m.; worship services, 11:00 a.m.; evening services from 7:45 until 9:00.  
Wednesday: Evening services, Bible study and prayer, 7:45 until 9:00.

**Assembly of God Church**  
(The Rev. Ivan Christoffersen)  
Thursday: Sectional Fellowship meeting at Woodlake, 3, 6:45 and 8 p.m.  
Friday: Sectional youth banquet at Valentine, 8 p.m.  
Sunday: Sunday School, 10 a.m. morning worship and junior church, 11 a.m.; Evangelistic service, 8 p.m. There will be a 7 p.m. youth service.

**Christ Lutheran Church**  
(The Rev. A. S. Gedwillo)  
Thursday: 8 p.m., Men's Club.  
Saturday: 9 a.m., Sr. Confirmation class. 10 a.m., Jr. class.  
Sunday: 9 a.m., Sr. Confirmation class. 10 a.m., Jr. class.  
Sunday: 9:45 a.m. Sunday school and Bible classes. 11 a.m., Divine worship and Holy Communion. Announcements are by registration. 8 p.m., Annual meeting of the voting assembly.

**St. Paul's Lutheran Church**  
Chambers  
(The Rev. William Roten)  
Sunday: Sunday school and Bible class, 10 a.m.; worship, 11 a.m.  
Saturday: Confirmation 9:30—11:30 a.m.

**First Presbyterian Church**  
(The Rev. John Hart)  
Friday: Evening church program will be given by the children.  
Sunday: Sunday school, 9:30 a.m., and morning worship, 11 a.m.  
Wednesday: Junior Youth and Choir, 7 p.m.; Senior youth 8 p.m.

# COMPARE

## WE WILL NOT BE UNDER SOLD ON WHITE MUSLIN SHEETS!



O'Neill, Nebraska

Just Say "Charge It!"

### NOW! LOWEST PRICES!!



## JANUARY WHITE Sale!

**BIG PRICE CUT! HADDON HALL**  
**1st QUALITY SHEETS—Fitted or Flat**

**BUY NOW ON LAY-AWAY!**

Lowest prices of the year! Time to fill your linen closet with cotton muslin sheets by Haddon Hall! 132 thread count flat sheets have taped selvages, 3" top hem, 1" bottom hem. Fitted bottom sheets are designed to fit smoothly and snugly for easy bed-making, comfortable sleeping. Bleached snowy white.

81 x 108" FLAT ..... reg. 1.57 ea.  
OR FITTED FULL SIZE ..... 1.98

MATCHING PILLOW CASES .. reg. 98c 34c ea.

**1.37**  
REG. 1.79  
72x108" or TWIN FITTED

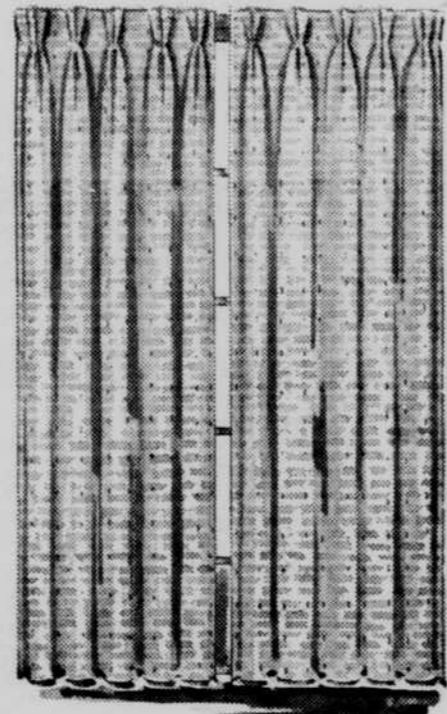


**CANNON PERCALES**

A fine blend of combed and 6% Pima cotton make Cannon percale sheets and cases so much softer, smoother—even after washing! 186 thread count with tapered selvages, bleached bright white. Minimum shrinkage. Save now.  
81x108" Fitted or Flat ..... Reg. 2.39 NOW 2.12  
Matching Pillowcases ..... Reg. 55c NOW 49c ea.

### LOOK! WINDOW BRIGHTNERS AT LOW WHITE SALE PRICES!

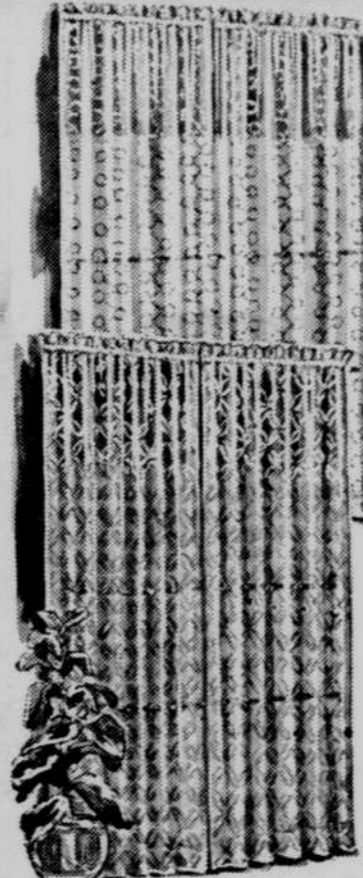
**Permanently Pleated DRAPERIES**



Machine Washable

**3.77**  
PR.

Rayon/acetate draw draperies have metallic threads running through the weave for an added decorator interest. Solution dyed beige, gold, seafam or white is wash-fast. 48x90-inch size. Give your home a fresh new look with elegant draw draperies. Save!



**Duralon Panels**

**\$1** EACH ONLY

Easy-care Duralon® rayon panels drape so gracefully, retain their beautiful color through many washings. No stretching or ironing required. 40x81-inch size in white or toast.

**Dacron Panels**

JUST **2.99** PR.

Delicate lace design panels of Dacron® polyester look smart alone or with draperies. Easy to wash, need no stretching or ironing. White only in 72x81-inch size. Value!



**Dacron Sets**

**1.98**

Sheer Dacron® polyester marquisette tier and valance sets look so dainty in bedroom or kitchen. Flocked. 60x36" with 54x11" valance.



**Rayon Tiers**

**2.98**

Easy-care rayon challis tier sets are gaily flocked in toast, pink or blue. A cheery home buy. 72x36-inch size with 72x10" valance!

**PRINT TOWELS**

Reg. 49c

**3 for \$1**

Cotton terry kitchen towels. Lint-free, absorbent. 18x30".

**IRONING SET**

Reg. 98c

**66c**

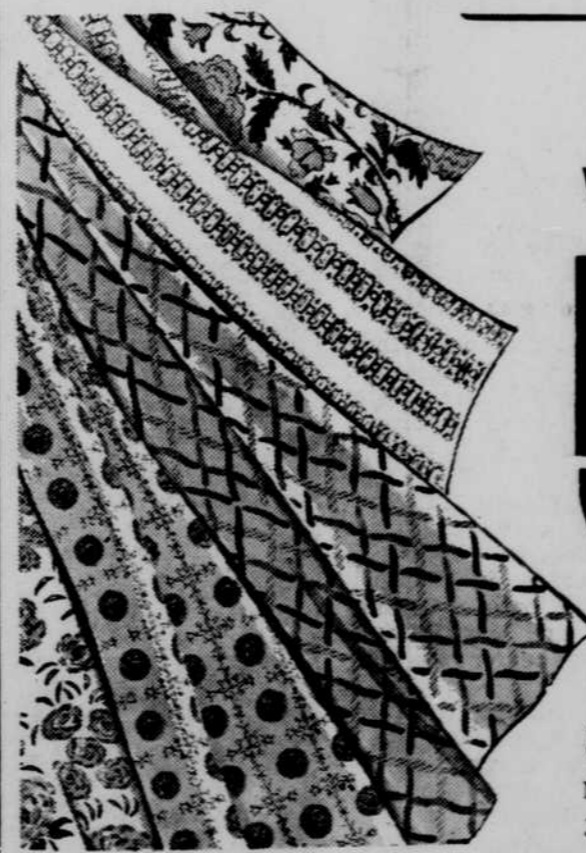
Scorch-proof silicone cover with burnproof siltex pad.

**FLOUR SACKS**

Reg. 29c

**4 for \$1**

100 lb. flour sacks, bleached white, ready for hemming.



### 1st QUALITY COTTONS

Wash 'n Wear prints—New Spring Colors

**59c** YD.  
Reg. to 79c Yd.

Sew up a whole new spring wardrobe at terrific savings! Make dresses, blouses, shirts and skirts in gay new prints, fresh vibrant colors. Choose plaids, florals or smart geometrics for your spring sewing needs. All 36 inches wide. Big bargain!

Charge It at Gambles! — Save on Every Yard!

**36" FLANNEL PRINTS**

3 Yds. **\$1**

Nursery prints make cute sleepwear for tots, there are pajama prints and florals for the rest of the family. 36" W.

**PILLOW TUBING**

**54c Yd.**

128 thread count in tubular weave. Bleached white. 42" W.

**27" FLANNELETTE**

**5 Yds. \$1**

Soft and snowy white—just right for baby's diapers!

**SHEET BLANKETS**

Reg. 1.98

**1.77**

70x90-inch size in unbleached cotton. Stock up and save!

## Dairy Sale

40 Head of home raised, registered & grade Holstein, Guernsey, Swiss dairy cows & heifers.

SALE STARTS PROMPTLY AT 1:00 P.M. — AT THE AINSWORTH LIVESTOCK MARKET  
Ainsworth, Nebraska

**SAT., JAN. 6**

18 HEAD OF TOP-PRODUCING HOLSTEIN AND GUERNSEY COWS AND 22 HEAD OF HOLSTEIN, GUERNSEY AND SWISS HEIFERS.

Part of these cows are milking now—the rest of the cows and heifers are heavy springers.

Part of the Holstein cows and heifers are registered stock. These cattle will be tested for TB and Bangs by date of sale.

**NELSON DAIRY FARM**

Vic and Vera Nelson, Owners

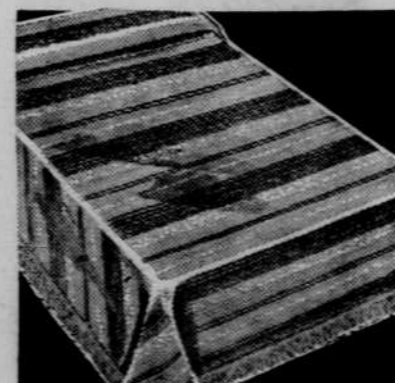


**BIG BATH TOWELS**

Reg. 69c

**48c**

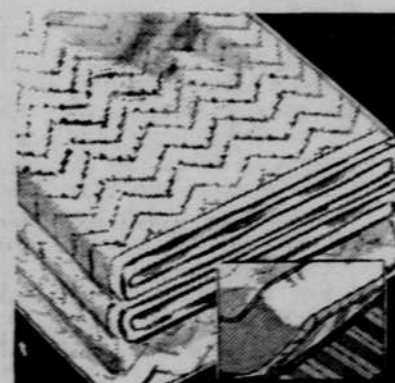
24x46" size in rose, turquoise, yellow. Soft cotton terry. Washcloth to match ..... 6/88c



**CHENILLE SPREADS**

**4.99**

Viscose rayon covered chenille won't shed lint! 90x105"; pink, beige, antique gold, blue.

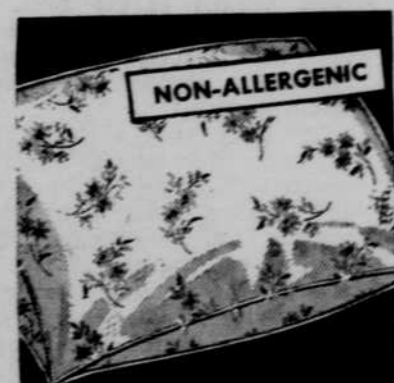


**MATTRESS PADS**

Reg. 4.49

**3.66**

Contour fitted pad is 1" box stitched. 54x76" full bed. Twin Size, 39x76" ..... 2.88



**DACRON PILLOWS**

Reg. 4.98

**3.99 Ea.**

Plump Dacron® polyester filled pillows have floral cotton percale cover. 21x27" cut size.



**JUMBO BLANKET**

Only **3.66**

72x90" rayon/acrylic blanket in cherry, turquoise, green, gold, camel, pink or lilac.



**VISCOSE RUGS**

Just **1.99**

Foam rubber backed Viscose rayon, handsome tweeds. 27x48". 27x72" Runner ..... 2.99

\*Prices and offers apply to all Gambles-owned stores, and in most Dealer stores.\*

### STOCK UP DURING THIS SAVINGS EVENT! BUY ON LAY-AWAY AT GAMBLES