

SHREDS as it SPREADS as it FLAILS!

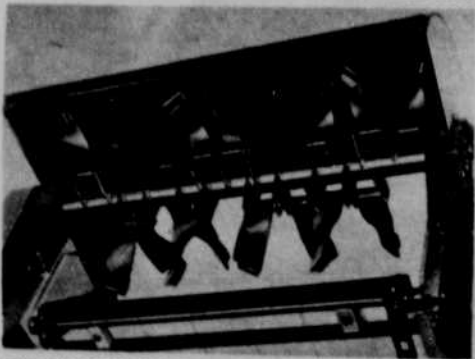


NEW IDEA Flail-Type Spreader

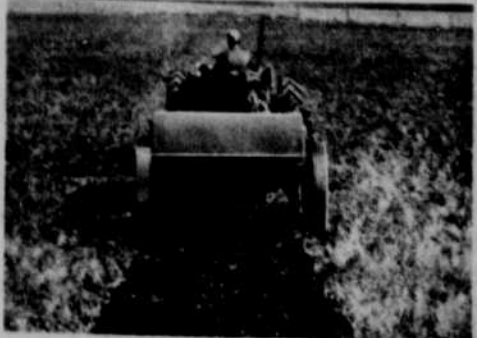
*Patented

SPREADS MANURE EVENLY... EVEN IF IT'S FROZEN!

WEATHER'S NO PROBLEM WITH THIS 130 BU. FLAIL SPREADER



THE SECRET'S IN THE FLAILS. Undershot action throws manure down and back for an unusually even, 80-90" wide pattern, regardless of cross wind. Flails are powered through a Warner bevel gear box and roller chain drive.



SHREDS FINE, SPREADS EVEN. See that pattern? The NEW IDEA flail spreader handles frozen manure or sloppy manure without build-up in sub-zero weather. Easy-to-reach lever gives 5 conveyor speeds, plus neutral.

NEW IDEA proudly announces an all-new flail-type spreader which does an excellent even-spreading job in sub-zero weather, or on shirtsleeve days. A large steel hood covers the flails for maximum safety and keeps flying manure low where the wind cannot carry it. We tested it on our torture track and tested it on farms in sub-zero weather to prove its ability to spread sloppy manure without build-up, as well as spread frozen manure.

The NEW IDEA Flail Spreader has a

130 bushel capacity, and a low 53 3/4" profile for easy loading with barn cleaner or hydraulic loader. It has a water-repellent Penta-treated box, full-length steel flares, and many other long life features. Heavy-duty conveyor is standard; extra heavy is optional. Only NEW IDEA offers this years-ahead spreader and dares to back it up with a full-year guarantee the same as on all NEW IDEA spreaders. See it at your NEW IDEA dealer's—\$195 down on the NEW IDEA Finance Plan buys it!

MAIL THIS COUPON TODAY!

NEW IDEA

Box 113, Coldwater, Ohio

Please send me free literature on the spreaders checked.



PTO SPREADERS

- 95 bushel
- 125 bushel
- 145 bushel



GROUND DRIVE SPREADERS

- 70 bushel
- 95 bushel
- 75 bushel, 4-wheel



FLAIL SPREADER

- 130 bushel



BUMP TRUCK SPREADER

- 6 tons or more



FACTS ON FINANCING

NEW IDEA'S COMPLETE LINE GIVES YOU THE RIGHT TYPE AND SIZE SPREADER FOR ANY TYPE OR SIZE FARM

NAME _____

STUDENT

ADDRESS _____

TOWN _____ STATE _____

NEW IDEA

PRODUCTS OF J&B CORPORATION



You'll need to feed some hay if there's a snow cover on the ground. However, don't feed more than cattle will clean up. This increases your costs. Records of Indiana beef cow owners show a ration consisting entirely of premium quality legume hay would cost about \$31 per head for a wintering period of five months. When only enough hay was fed to meet minimum nutritional requirements, wintering costs were about \$26 or a savings of \$5 a head.



If cows cannot get sufficient protein when there's a snow cover on the ground, feed some protein. The owner of these cows has spread protein cubes on the ground with the hay being fed. Once the hay is cleaned up it's easy for the cows to pick up the protein cubes.



Making complete use of crop residues can be a big help in stretching feed supplies. Besides, the cattle will pick up what little grain was left in the field. If you're interested in getting satisfactory gains on this type of feed you'll need to also provide some protein, though. Several companies now have protein blocks available that work well for cattle grazing stalk fields. Generally you can figure the cattle will consume about one pound of protein daily.