

# CONTROL FLIES...



Just one residual application of  
**DIAZINON**  
INSECTICIDE  
 in your dairy barn  
**KILLS FLIES**  
 for weeks!

**Why spray every day?**

Just one residual application of Diazinon insecticide kills flies for weeks at a time.

You save in time, labor and cost per day of protection.

This year spray less and pay less for fly control. Ask your farm supply dealer for Diazinon—one of the safer phosphorus insecticides.

ORIGINATORS OF DDT INSECTICIDES



GEIGY AGRICULTURAL CHEMICALS

Division of Geigy Chemical Corporation • Saw Mill River Road, Ardsley, New York

All purpose  
 farm insecticide

SAFE, EFFECTIVE

Geigy

# METHOXYCHLOR

**LIVESTOCK**

Controls horn flies and cattle lice

**FIELD AND FORAGE CROPS**

Controls leafhoppers, spittlebugs and many other insect pests

**GRAIN STORAGE BINS**

Residual control of insects attacking stored grain

**VEGETABLES**

Controls many insects on many vegetable crops

**FRUIT**

Controls plum curculios, codling moths and many others.

Follow label directions. May be used on food crops up to seven days before harvest.



ORIGINATORS OF DDT INSECTICIDES

GEIGY AGRICULTURAL CHEMICALS

Division of Geigy Chemical Corporation • Saw Mill River Road, Ardsley, N.Y.

# MECHANIZE YOUR

During the past few months you've probably heard a lot about new feed augers, distributors and other items that simplify and reduce the effort of feeding chores. Hundreds of new items have been developed to help cut the labor and back-work needed in feeding cattle. They range from complete systems to small components which can be combined into one workable feeding operation.

You may question whether you can afford to install augers, conveyors, timers, etc., for feeding but a prominent midwestern farm management concern says, "Almost any feeder now in business can afford to mechanize his operation to some extent. You don't have to do it all at once, but if you lay out a plan for development and improvement, you can add more equipment as finances and time allow."

Time is a critical factor on most farms. It seems you just don't have enough time to get everything done. Reliable studies of hundreds of Midwest farm operations indicate that, on the average livestock feeding and handling take about 40% of a farmer's time. This can only be justified if enough cattle are handled to return a satisfactory level of net profit for the year's work.

Figures show that the value or cost of labor has increased about five times during the past 20 years while machinery and equipment costs have increased only half this figure. This shows quite clearly that you can't afford to overlook the value of farmstead equipment and facilities that help you reduce labor and increase volume.

**Investment Guides**

The amount you can afford to invest in mechanizing your feeding setup depends on many factors. Reducing the amount of time needed for feeding may permit you to handle more cattle or farm more land. There is an infinite number of other possibilities. Here's a guide developed by Purdue University economists on the basis of recent studies which they have conducted.

**GUIDE TO BUYING CHORE-SAVING MACHINERY**

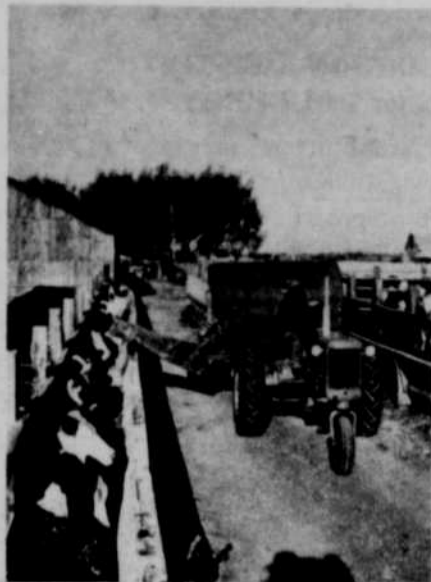
If a machine saves this time per day:

	\$ .75	\$ 1.00	\$ 1.50	\$ 2.00
60 minutes	\$1,750	\$2,250	\$3,700	\$4,800
50 "	1,450	1,900	3,050	4,000
40 "	1,050	1,500	2,400	3,200
30 "	750	1,100	1,750	2,400
20 "	500	700	1,100	1,600
10 "	250	300	600	800

and the hourly labor rate is:

\*These figures cover cost of original equipment plus a charge of 5% per year to cover interest, taxes, insurance and repairs.

Agricultural engineers also give this rule of thumb: Each \$2,000 invested in labor savers—such as augers, conveyors and equipment with electric motors that fit into the livestock operation—will cut labor about 10% until



Self unloading wagons can be a big labor saver in the feeding operation. With a central driveway, cattle can be fed without driving into the lots. It certainly reduces winter feeding problems. A self unloading wagon can be quite practical, especially if the feed is stored some distance from the cattle lots or if you're also feeding on pasture. This system also seems to be the most workable in a large majority of landlord-tenant operations.

**Warp's** AS LOW AS 11 SQ. FT.  
 COVERALL  
**POLYETHYLENE**  
 The ORIGINAL Polyethylene Film For Farm Use\*  
 Made in Clear or Sun-Resistant Black  
 Seamless Widths Up to 32 Feet  
 COVERALL is water-proof, rot-proof, acid-proof. Meets FHA specifications. Durable, inexpensive. The Best Polyethylene Sheeting Money Can Buy. Made by Warp Bros., Chicago 51, Ill.—Established 1924.  
 \*Warp's Coverall Was the First Polyethylene To Be Successfully Tested and Used for Silage Covers  
 Available At All Leading Hardware, Lumber Implement or Feed Dealers

*They're light, fast, built to last..*

Today's most wanted shotguns are

# REMINGTON



From \$114<sup>95</sup>\*

**New Remington Model 878 "Automaster" Autoloading Shotgun**—Exclusive "Power-Matic" action lessens recoil effect, yet gives full knockdown power because self-adjusting "Power-Piston" which automatically selects the right amount of gas to work the action with different loads. Quick-Change Barrel feature. American Walnut stock. 3 shot. In 12 gauge only.

From \$89<sup>45</sup>

**Remington "Wingmaster" Model 870 Pump-Action Shotgun**—Available in 12, 16, 20 gauges... It's the pump-action shotgun with the original Quick-Change Barrel feature. Exclusive breech-block locking mechanism. Double action bars keep action velvet-smooth. "Vari-Weight" plug in 12 gauge gives shooter three guns in one.

**Remington** MADE IN U.S.A.

\* Prices subject to change without notice. "Wingmaster," "Power-Matic" are Reg. U. S. Pat. Off. and "Automaster" is a trademark of Remington Arms Company, Inc., Bridgeport 2, Conn. In Canada: Remington Arms of Canada Limited, 36, Queen Elizabeth Blvd., Toronto, Ontario.