

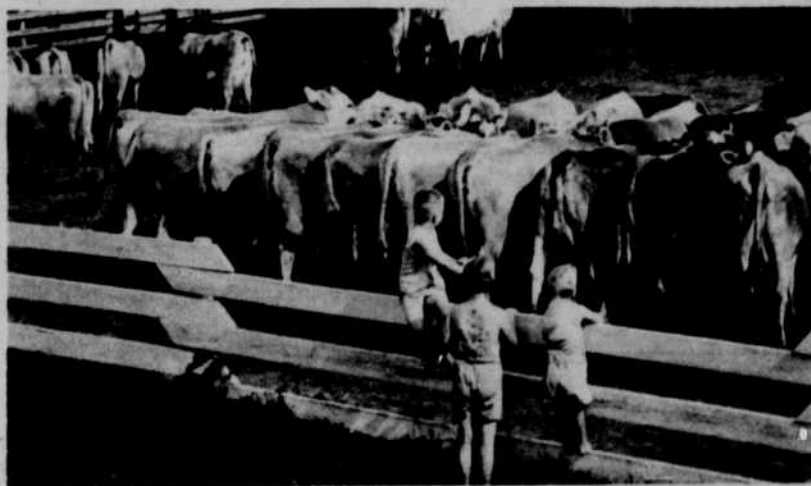
Some dairymen find that feeding grass silage during summer works better than chopping fresh grass daily. They take less risk with wet weather, which can keep them out of fields, and forage quality is more uniform throughout the summer. When using fresh green chopped grass, it's difficult to schedule the forage production program to give highest quality grass when needed.



With a drylot feeding operation you'll want to provide plenty of premium quality hay all the time. For many dairymen this is the secret to their excellent herd production averages. Efforts spent in growing, harvesting or buying premium quality forage can often make the difference between an 8,000 and a 10,000 plus herd average. Newer type ground-level hay storage buildings, from which cows can be self-fed, can save you a lot of time and let you handle more cows.



Here's a typical loafing barn used with drylot dairy operations in this part of the country. Cows are easy to keep clean in this type setup as long as the loafing area is kept well-bedded and adjoining concrete lots are kept clean. Loafing barn should provide 40 to 50 square feet of area per cow, depending on their size.



For a drylot dairy operation you'll need to provide plenty of lot and feeder space. Overcrowding can hurt production and create unnecessary management problems. Cows will need 24 to 30 inches of feeder space per head unless they have access to roughage all the time. In this case, they'll need only 15 to 18 inches each. In terms of lot space, figure on a minimum of 75 to 100 square feet per cow in addition to about 20 square feet of holding area near milking parlor.

CONTROL FLIES...



Just one residual application of
DIAZINON
INSECTICIDE
in your dairy barn
KILLS FLIES
for weeks!

Why spray every day?

Just one residual application of Diazinon insecticide kills flies for weeks at a time.

You save in time, labor and cost per day of protection.

This year spray less and pay less for fly control. Ask your farm supply dealer for Diazinon—one of the safer, phosphate insecticides.

ORIGINATORS OF DDT INSECTICIDES



GEIGY AGRICULTURAL CHEMICALS

Division of Geigy Chemical Corporation • Saw Mill River Road, Ardsley, New York

Warp's AS LOW AS 1¢ SQ. FT.
COVERALL POLYETHYLENE

A Seamless Polyethylene Sheeting Made in Clear or Sun-Resistant Black

COVERALL is water-proof, rot-proof, acid-proof. Meets FHA specifications. Durable, inexpensive. The Best Polyethylene Sheeting Money Can Buy. Made by Warp Bros., Chicago 91, Ill.—Katach, 1964. Originators and Largest Producers of Plastic Sheeting for Farm Use.

Gauge	Thickness	Width	Length
2 Gauge (.002)	1/8"	3, 4, 8, 16 ft.	16 ft. width
4 Gauge (.004)	3/16"	3, 6, 10, 12, 14, 16"	
6 Gauge (.006)	1/4"	20, 24, 32 ft.	width
8 Gauge (.008)	5/16"	12, 16, 20 & 24 ft.	width

Plastic Per Square Foot Width Available — 100 Lb. Ft. Rolls

Take This Ad With You To Your Local Hardware, Lumber, Implement Or Feed Dealer To See The Old Fashioned Way's COVERALL At Their Low, Low Prices

You're sure of satisfaction

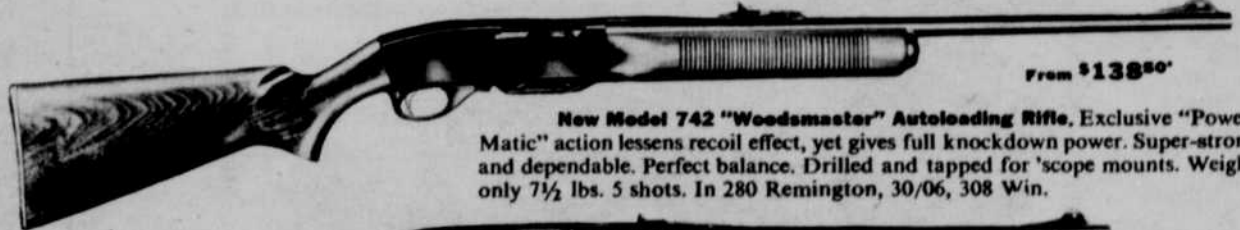
... when you buy by Brand Name!

DOUBLE DUTY REMINGTON RIFLES

give you varmint rifle accuracy
... get bigger game, too!

Take your choice of autoloading, slide- or bolt-action. All these Remington rifles in new long-range 280 Remington caliber give you accuracy out to the limits of human sighting and holding ability. In the 100-grain Bronze Point bullet you get the super-precision

needed for varmints. And you can use the same rifle in the fall with 125-grain Pointed Soft Point "Core-Lokt," 150-grain Pointed Soft Point "Core-Lokt" or 165-grain Soft Point "Core-Lokt" for heavier game. See the new double-duty Remington rifles now!



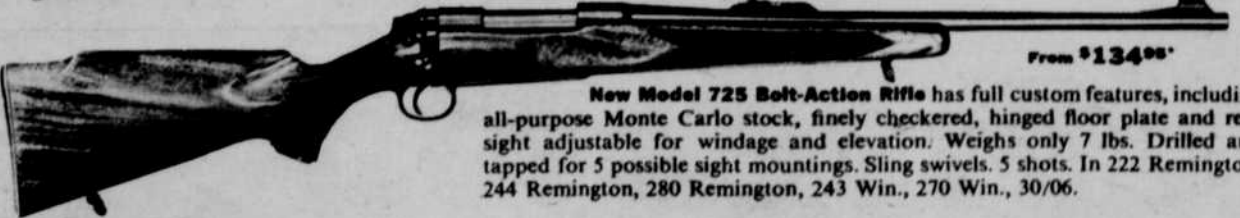
From \$139.50*

New Model 742 "Woodsmaster" Autoloading Rifle. Exclusive "Power-Matic" action lessens recoil effect, yet gives full knockdown power. Super-strong and dependable. Perfect balance. Drilled and tapped for scope mounts. Weighs only 7½ lbs. 5 shots. In 280 Remington, 30/06, 308 Win.



From \$115.00*

New Model 760C "Gamemaster" Slide-Action Rifle is the world's fastest-handling carbine and is the only brush and saddle gun chambering modern, high-power cartridges. Weighs just 6½ lbs. 38½" over all, 18½" barrel. 5 shots. Drilled and tapped for scope mounts. In 280 Remington, 30/06, 270 Win.



From \$134.00*

New Model 725 Bolt-Action Rifle has full custom features, including all-purpose Monte Carlo stock, finely checkered, hinged floor plate and rear sight adjustable for windage and elevation. Weighs only 7 lbs. Drilled and tapped for 5 possible sight mountings. Sling swivels. 5 shots. In 222 Remington, 244 Remington, 280 Remington, 243 Win., 270 Win., 30/06.

*Prices subject to change without notice.
"Woodsmaster," "Gamemaster," "Power-Matic" and "Core-Lokt" are Reg. U. S. Pat. Off. by Remington Arms Company, Inc., Bridgeport 3, Conn. In Canada: Remington Arms of Canada Limited, 26 Queen Elizabeth Blvd., Toronto, Ont.

Remington **DUPONT**