

**Class Night Held At O'Neill High**

"A Flight Into New Horizons" was the theme of the O'Neill high school Class Night Wednesday evening at the high school auditorium. The cast for the "trial" included Gary Gillespie as the judge; Emerson Steele as the lawyer for the plaintiff; Gerald Reynolds, defense lawyer; Paula Reed, class historian; Bonnie Lawrence, class poet; Joan Wilson, class prophet; Kathy Brady and Sheryl Young, gufforians; and Darlene Pierson, class will.

**WCS Installs New Officers Thursday Here**

The Women's Society of Christian Service met Thursday afternoon at the First Methodist Church for installation of officers. Rev. Glenn Kennicott conducted the installation ceremonies for the following officers: Mrs. Clay Johnson, Jr., president; Mrs. Roy Wayman, vice president; Mrs. Dale

Perry, recording secretary; Mrs. Louis Wray, promotion secretary; Mrs. Harold Lindberg, treasurer; Mrs. Frank Eppenbaugh, missionary education and service; Mrs. Ben Wayman, Christian social relations; Mrs. William Spence, local church activities; Mrs. A. Neill Dawes, youth and student work; Mrs. Dale Fetrow, children's work.

Mrs. Louis Reimer, sr., spiritual life; Mrs. Dwayne Philbrick, literature and publications; Mrs. Ruby Wayman, supply work and Mrs. Gilbert Poesse, publicity chairman.

The pledge service was given by Mrs. Harold Lindberg. The worship was conducted by Mrs. William Spence. Cards and handkerchiefs were given members having birthdays in the months between January and May.

A dessert luncheon was served by Mesdames Dale Perry, Carl Schenzel and Clay Johnson, Jr.

**Poppy Sales Chairman Thanks Community**  
Mrs. Dorel Graham, Poppy Day Chairman for the O'Neill American Legion Auxiliary, Simonson Unit No. 93 today thanked volunteer workers for the part they played in this year's memorial observance to veterans.

Legion who volunteered their services this year to this worthy program," Mrs. Graham said.

**Eighteen Transfer To O'Neill Church**

Eighteen new members were received by transfer into membership of the First Methodist church in O'Neill at Sunday services May 8 and 15.

Members transferred on Sunday by Rev. Glenn Kennicott were: Mr. and Mrs. George Peterson and sons Stephen and Kent from the Genoa Methodist church; Mr. and Mrs. Harry Spall, Valentine Methodist church; Mrs. Orpha Switzer and sons Warren and Richard, Clearwater Methodist church; Mr. and Mrs. Norman Hesson, McCook Methodist church. Mr. and Mrs. John Pithan were received as affiliated members from Our Savior Lutheran church in Sioux City, Ia.

Mr. and Mrs. John Enke and William, Tekamah Methodist church; Mr. and Mrs. Melvin Lorenz, Inman Methodist church and Mr. and Mrs. A. J. Snyder, Trinity Methodist church at Grand Island were transferred on May 8.

**O'Neill Teams Win Invitation**

The rain-plagued O'Neill Invitational track meet was finally held in O'Neill Tuesday under cloudy skies and the threat of more rain. In Class A, O'Neill easily won their own meet with 90 1/3 points compared to second place Crofton with 67 2/3. St. Mary's Cardinals took a 5 1/2 point win over second place Lynch for the Class B title. Records were established in all events as this was the first meeting for the annual affair.

The Class A results follows: O'Neill, 90 1/3; Crofton, 67 2/3; Pierce, 55; Neligh, 15 and Ainsworth, 6. Class B teams finished in this order: SMA, 57; Lynch, 51 1/2; Chambers, 29; Atkinson St. Joe, 25 1/2; Page, 21; Atkinson, 10; Bartlett, 10; Spencer, 8; and Stuart, 6.

Event results of area schools: **Class B Discus** 1st. Ickes, Page, 115' 4"; 2nd. Higgins, SMA; 3rd. Schaaf, St. Joe; 4th. Barnes, Lynch; 5th. Humpal, St. Joe.

**Class B 440 yd.** 1st. Shoemaker, SMA, 53' 6"; 2nd. Eby, O'Neill; 3rd. Schaaf, St. Joe; 4th. Gidka, Spencer; 5th. Spitzberger, SMA.

**Class A 440 yd Dash** 1st. Eby, O'Neill; 2nd. Eby, O'Neill.

**Class A Broad Jump** 2nd. Schaaf, O'Neill; 4th. Kilcoin, O'Neill.

**Class A High Jump** 1st. Eby, O'Neill, 5' 9 3/4"; 3rd. 4th., and 5th. McGinn, O'Neill; Donlin, O'Neill.

**Class A Discus** 5th. Donlin, O'Neill.

**Class B Shot Put** 1st. Humpal, St. Joe, 45' 7"; 2nd. Barnes, Lynch; 3rd. Kamphaus, SMA; 4th. Higgins, SMA; 5th. place Tie; Schaaf, St. Joe; Rostard, Lynch.

**Class A Shot Put** 1st. Donlin, O'Neill, 44' 7"; 4th. Schmeichel, O'Neill; 5th. Jeffries, O'Neill.

**Class B High Jump** 1st. Schaaf, St. Joe, 5' 6"; 2nd. Peters, SMA; 3rd. 4th., and 5th. Tie. F. Cronk, Page; Dobias, Atkinson; Lawan, Lynch.

**Class A Pole Vault** 1st., 2nd., and 3rd. Tie, McGinn, O'Neill, 10' 3"; McCabe, Crofton; Schmeichel, O'Neill; 4th. Love, Crofton; 5th. Nelson, O'Neill.

**Class B Pole Vault** 1st. Persons, Spencer, 10' 3"; 2nd. Hall, Page; 3rd. Ickes, Page; 4th. G. Shoemaker, SMA; 5th. Cronk, Page.

**Class B Broad Jump** 1st. T. Schaaf, St. Joe, 20'; 2nd. L. Swanson, Chambers; 3rd. Rostard, Lynch; 4th. Lloyd, Lynch; 5th. Ickes, Page.

**Class B 120 yd. High Hurdles** 1st. Swanson, Chambers, 16.5; 2nd. Lanman, Lynch; 3rd. G. Shoemaker, SMA; 4th. Hynes, SMA; 5th. Peters, SMA.

**Class A 120 yd. High Hurdles** 2nd. Schaaf, O'Neill; 3rd. Ermer, O'Neill; 4th. Larson, O'Neill.

**Class B Mile Run** 1st. Brewster, Stuart, 4:57.5; 2nd. Pelster, Bartlett; 3rd. Stewart, Lynch; 4th. Chavala, Lynch; 5th. Sullivan, SMA.

**Class A Mile Run** 4th. Godel, O'Neill.

**Class B 100 yd Dash** 1st. Berney, Bartlett, 11.0; 2nd. Swanson, Chambers; 3rd. Pinkerman, Lynch; 4th. Burrell, Chambers; 5th. Adams, Chambers.

**Class A 100 yd. Dash** 1st. Kilcoin, O'Neill, 10.6 (10.4 preliminary); 5th. Tomlinson, O'Neill.

**Class B 80 yd. Run** 1st. Vesely, Lynch, 2:14.8; 2nd. Fricke, Atkinson; 3rd. B. Kamphaus, SMA; 4th. Schollmeyer, Lynch; 5th. Kruse, Chambers.

**Class A 80 yd. Run** 1st. Dexter, O'Neill, 2:08.9.

**Class B 180 Low Hurdles** 1st. Lanman, Lynch, 23.0; (Bennett of Bartlett ran 22.5 in preliminary); 2nd. Hynes, SMA; 3rd. Shoemaker, SMA; 4th. Darnell, Lynch; 5th. Dobias, Atkinson.

**Class A 180 Low Hurdles** 2nd. Schaaf, O'Neill; 4th. Ermer, O'Neill.

**Class B 220 yd. Run** 1st. Shoemaker, SMA, 24.5; 2nd. Adams, Chambers; 3rd. Burrell, Chambers; 4th. Spitzberger, SMA; 5th. Micaneck, Lynch.

**Class A 220 yd. Run** 1st. Kilcoin, O'Neill, 23.7; 4th. Eby, O'Neill; 5th. Havranek, O'Neill.

**Class A Two-Mile Relay** 2nd. O'Neill.

**Class B 880 Relay** 1st. SMA, 1:39.2; 2nd. Chambers; 3rd. Lynch.

**Class A 880 yd. Relay** 3rd. O'Neill.

**Class A Mile Relay** 2nd. O'Neill.

**Class B Mile Relay** 1st. Lynch; 2nd. SMA; 3rd. Atkinson.

**Class B Mile Relay** 1st. Lynch; 2nd. SMA; 3rd. Atkinson.

**Class B Mile Relay** 1st. Lynch; 2nd. SMA; 3rd. Atkinson.

**Class B Mile Relay** 1st. Lynch; 2nd. SMA; 3rd. Atkinson.

**Class B Mile Relay** 1st. Lynch; 2nd. SMA; 3rd. Atkinson.

**Class B Mile Relay** 1st. Lynch; 2nd. SMA; 3rd. Atkinson.

win. The losing pitcher was Wettlaufer. Credit and Krugman got the O'Neill hits and Crumley got Page's only hit.

West O'Neill handed Page another defeat May 16 on the 3-hit pitching of Troshynski. O'Neill collected six hits off pitcher Hansen. The game was played at O'Neill. Leading hitters for O'Neill in the game were Troshynski, two doubles, and Spittler, a triple and a single. Page hits were collected by Allen, Shaw and Anson.

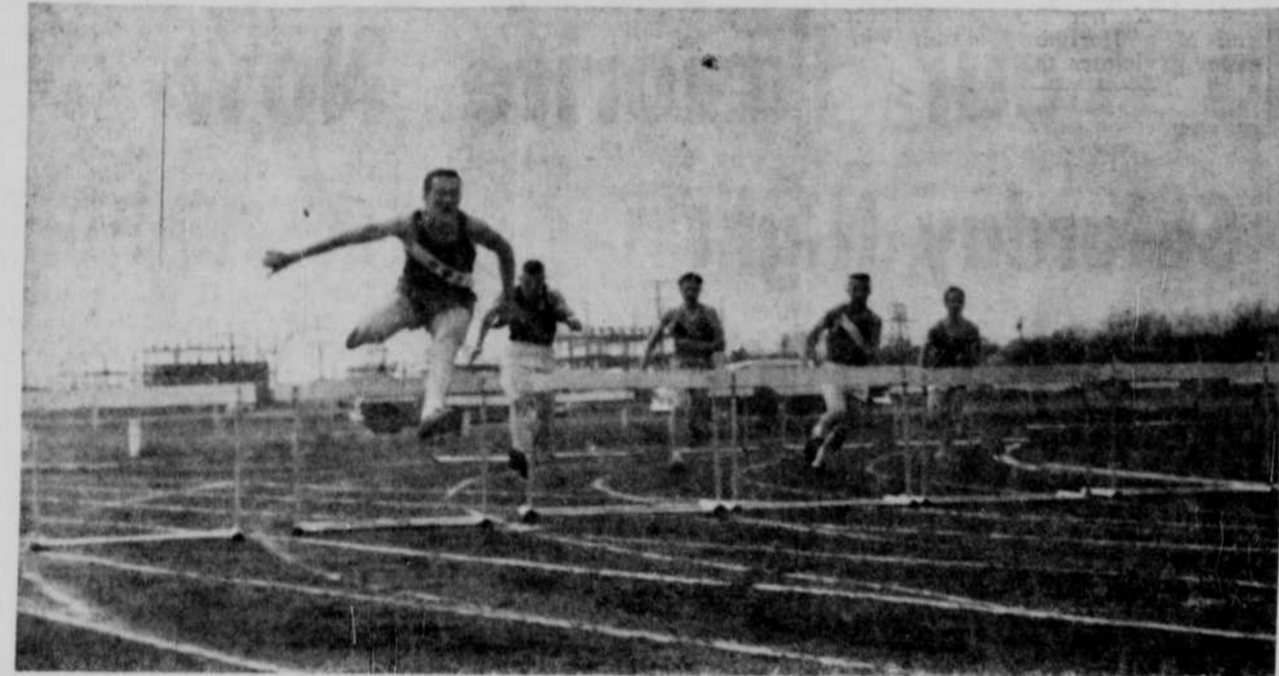
Emmett downed Orchard May 13, 10-3. The winning pitcher for Emmet was Fox—Holm was the loser for Orchard.

The top ten hitters in the O'Neill city Little League play are:

Troshynski, Indians	667
Spittler, Braves	500
Credit, Cardinals	500
Richter, Cardinals	500
McKay, Phils	500
Kelly, Braves	429
Booth, Braves	400
Yantzi, Phils	400
R. Riley, Braves	333
Sindelar, Braves	333
Krugman, Phils	333

**Eagles Place Eighth**  
O'Neill's Eagles placed eight men in the state track meet with a number of first and second place finishes at the District meet held at Burwell Friday.

**Scenes from the 1960 O'Neill Invitational Track Meet**



Bill Hynes clears the low hurdle on his way to victory in the heat. Darnell of Lynch and Dobias of Atkinson are to his left. Frontier photo and engraving.



Bennett of Bartlett is first over the hurdle with Lanman of Lynch a close second. Frontier photo and engraving.



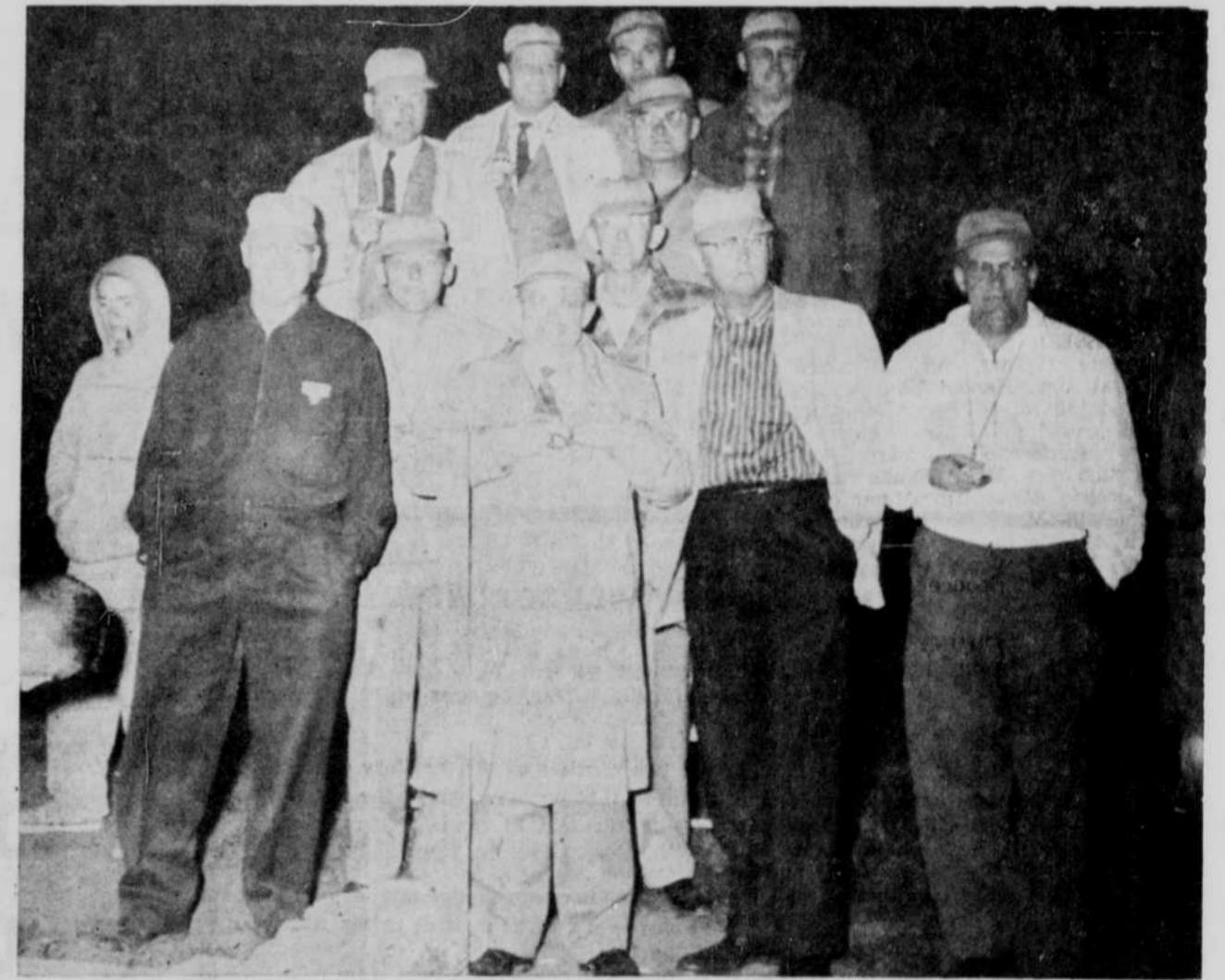
Jim Shoemaker hits the tape with the baton for SMA in the 880 relay. St. Mary's won the Class B division of Tuesday's meet. Frontier photo and engraving.



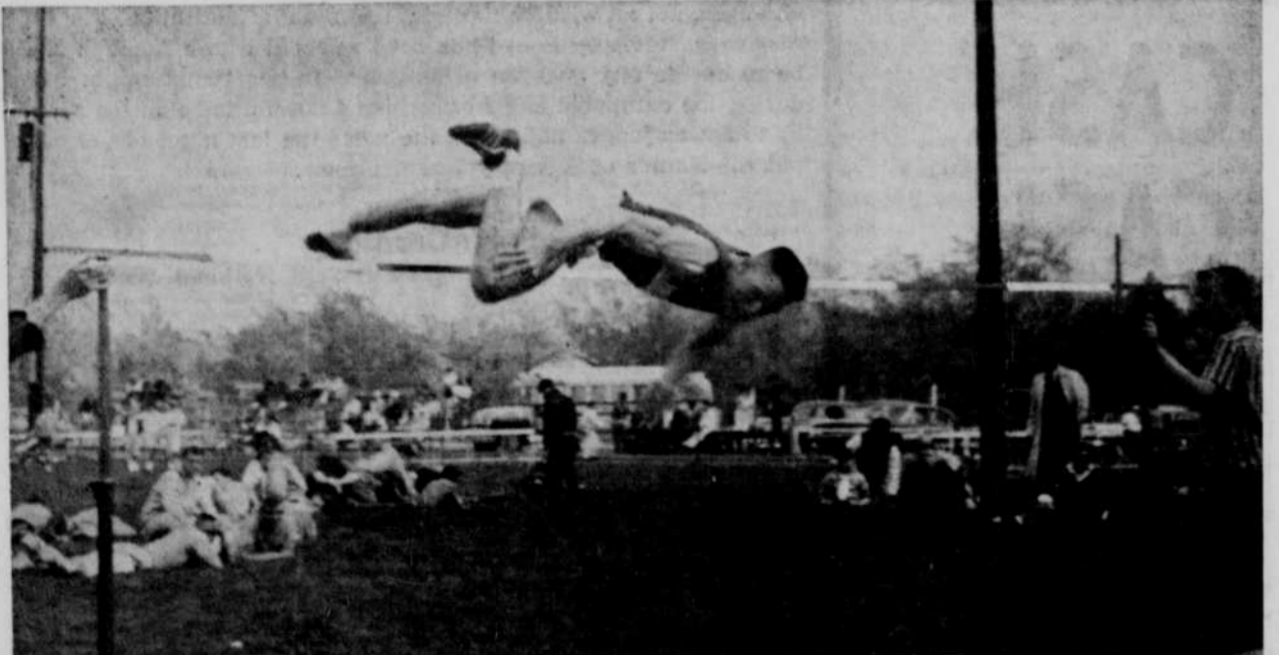
These Eagles competed at Burwell. Left to right, front row, Dennis Tomlinson, Jerry McGinn, John Harder, Curt Larson and Mike Hand. Second row, Leonard Havranek, Bill Nelson, Bill Eby, Bob Eby, Jerry Kilcoin, Larry Godel and Larry Donlin. Third row, Richard Ernst, Jerry Dexter, Don Schaaf, John Kurtz, Darold Ermer and Ron Schmeichel. Frontier photo and engraving.



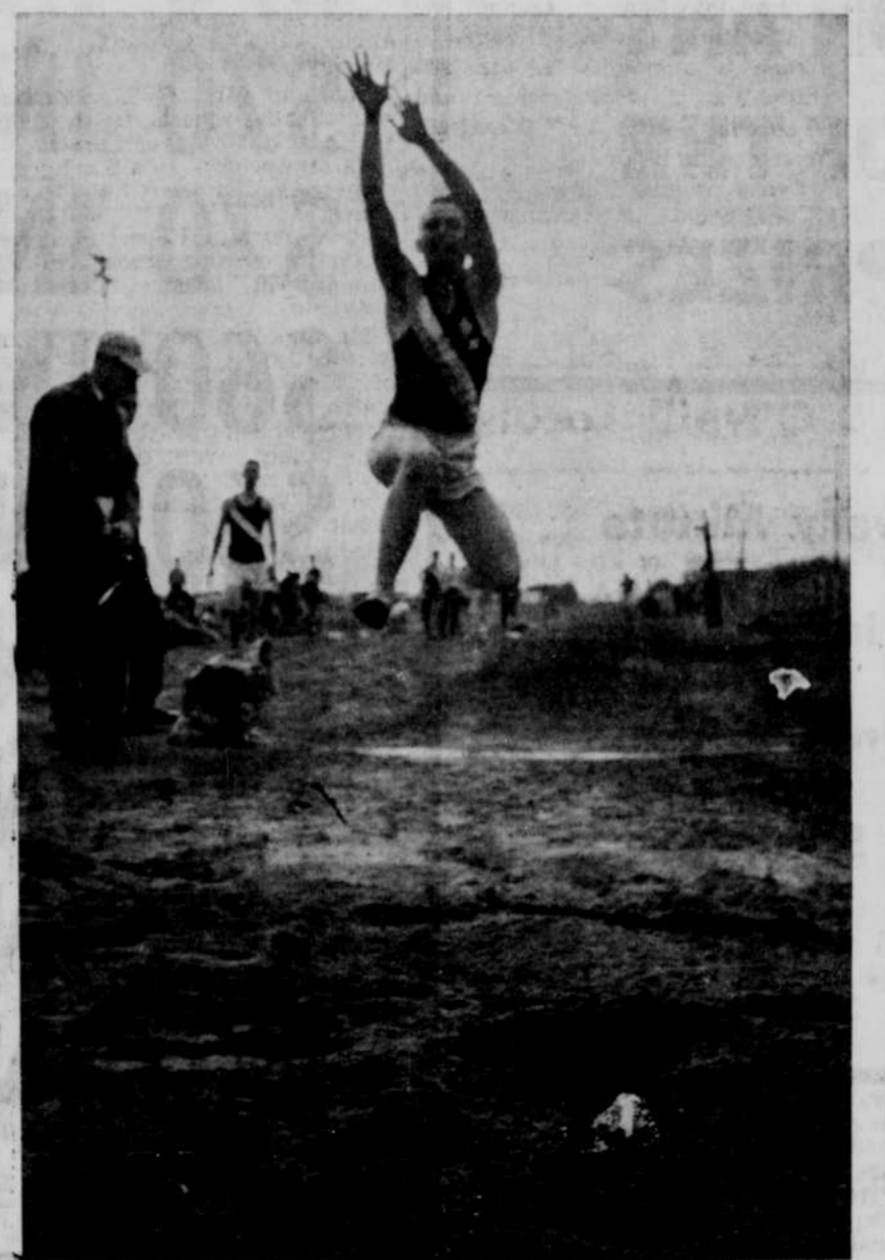
Swanson of Chambers puts out a mighty effort in the broad jump. Frontier photo and engraving.



This fine track team showed up at the O'Neill Invitational to take on all comers, but when it was discovered that there were no track uniforms big enough to fit them they decided to act as timers. (They won the meet). Pictured are, front row, Ray Eby, Gil Poesse, Bill McIntosh, Wayne Spels, Sarge Cousins, and Bob Forwood. Standing on the steps are Virg Laursen, George Hammond, Dale French, Tom Liddy and Howard Manson. Frontier photo and engraving.



Bob Eby clears the bar at 5' 9 3/4" to win first in the high jump. Bob will compete in the state meet at Lincoln for O'Neill high. Frontier photo and engraving.



Dennis Ickes reaches for the sky as he attempts to jump to the hankie. Frontier photo and engraving.



Jerry Kilcoin is first to the tape in the Class A 100 yd. dash at Tuesday's O'Neill Invitational. Frontier photo and engraving.



Coaches posed with their trophies won at the O'Neill Invitational track meet. Pictured are, front row, Class A winner Jake Hawley and Class B winner Don Templemeyer. Back row, Supt. Milton Baack, Pierce coach Bill Rolling, Crofton coach Jim Taylor, Lynch coach Paul Wilson, and O'Neill coach Bill Edwards.