

## 4-H Clubs Defy Adverse Weather

Approximately 375 4-H club members, leaders and families braved the icy roads and severe weather to attend the annual family fun night at O'Neill on Saturday, March 10.

Highlight of the evening was giving out awards to leaders and members for outstanding work done during the past year.

A program was given by the following clubs: Riverside 4-H club, musical number; Victory Boys and Girls, musical number; Busy Beavers, twirling act; Hoosier Hot Shots, musical novelty numbers; Curly Q's, musical number; O'Neill Willing Workers, skit; report on club congress, by Pat Boyle; community singing, led by Barbara Trowbridge, of Page, accompanied by Elsie Manson, of O'Neill.

Five leaders—Mrs. E. E. Keyes, of Inman; Mrs. Edward Boyle, of O'Neill; Lyle Abney, of Inman; George Fullerton, of Amelia; C. E. McVay, of O'Neill—were given recognition and were awarded a silver four-leaf clover pin for serving as club leader for five years.

The following received plaques for two-year leadership: Mrs. John Babl, of O'Neill; Mrs. Ralph Beckwith, of O'Neill; Mrs. Frank Cronk, of Page; Mrs. Fern Davis, of O'Neill; Mrs. Merle DeLong, of Page; Blaine Garwood, of Amelia; Mrs. Glenn Garwood, of Amelia; Mrs. Herman Gans, of Atkinson; Mrs. Melvin Held, of Page; Mrs. Herman Janziag, of O'Neill; Mrs. Berlin Mitchell, of Stuart; Lawrence Pacha, of Atkinson; Mrs. Joe Ramold, of Atkinson; Dale Revell, of Star; Mrs. Herb Sweet, of Stuart; Mrs. John Weichman, of Atkinson. These medals and plaques were presented by Mrs. Bayne Grubb, of Chambers, who is a member of the county 4-H club committee.

One of the outstanding awards given to 4-H club members was the \$50 17-jewel wrist watch, which was given to Edward Boyle, who was state champion on the home grounds beautification project. This watch was given by Mrs. Walgren, Edward also received the county medal on yard beautification.

The other medals and awards to county champions were as follows:

**Foods**—Mary Taggart, of Chambers, Silver Star Sisters. Dairy foods—Darlene Grimes, Mary Taggart, Silver Star Sisters.

**Homemaking**—Ramona Schneider, of O'Neill, Riverside; Joanne Lansworth, of O'Neill, Up and At It; LaDonna McNulty, of O'Neill, Up and At It.

**Clothing**—Beverly Small, of Amelia, South Fork Community. Dress revue—Beverly Small, of Amelia, South Fork Community; Darlene Grimes, of Chambers, Silver Star Sisters; Maxine Peterson, of Amelia, South Fork Community; Shirley Roth, of Atkinson, Clover; Rita Marie Weichman, of Stuart, Cleveland; Doris Pierson, of O'Neill, Up and At It; Alice Young, of O'Neill, Up and At It.

**Field crops**—Murray Mellor of Atkinson, Clover. Tractor—Edward Boyle, of O'Neill, Riverside.

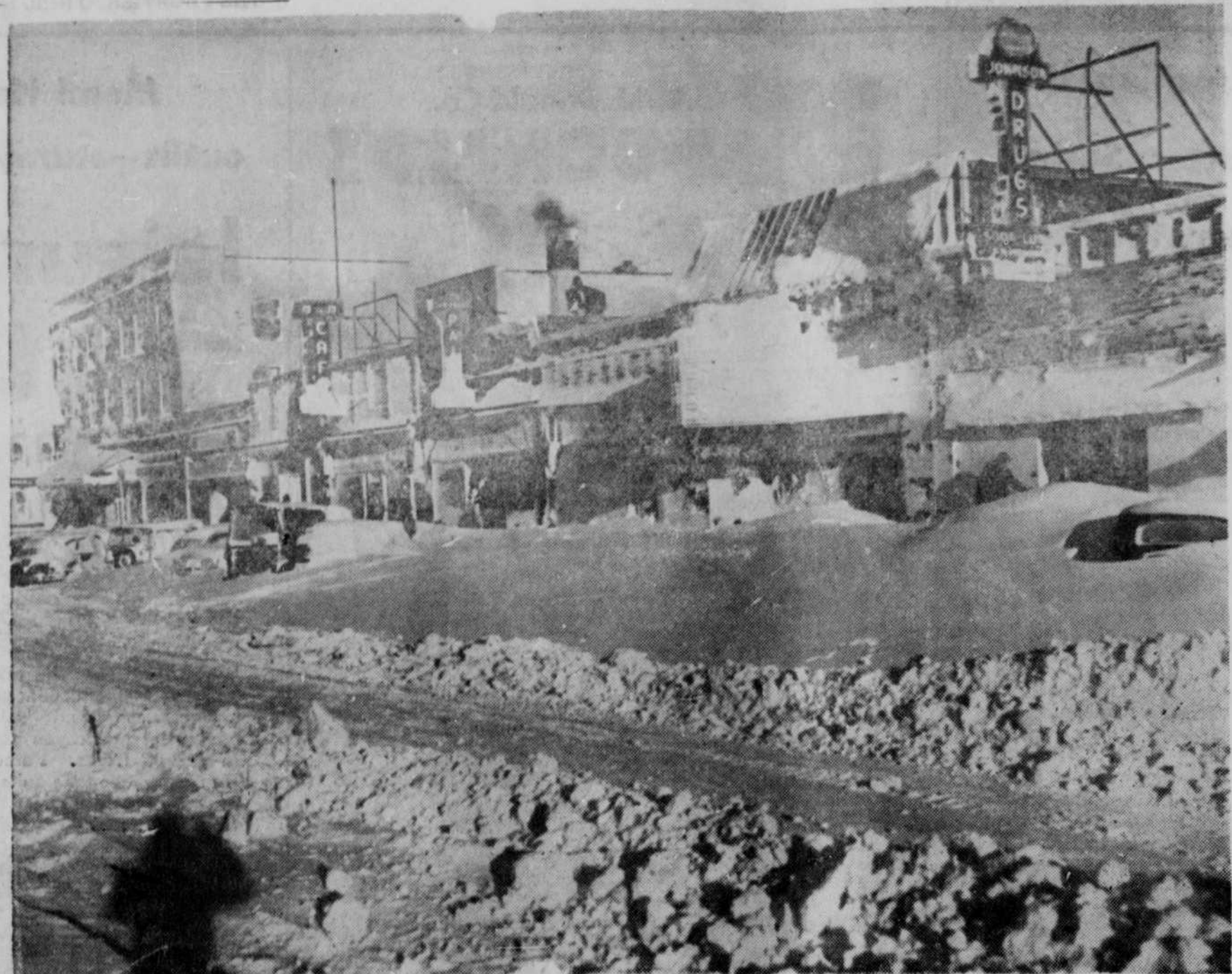
**Poultry**—Michael Boyle, of O'Neill, Riverside; Elaine Babutka, of O'Neill, Riverside.

**Dairy**—Bobby Reimers, of Inman, Victory Boys and Girls; Levon Gunter, of Ewing, Happy Hollow; Roland Hansen, of Inman, Victory Boys and Girls.

**Garden**—Patrick Boyle, of O'Neill, Riverside; Joelyn Backhaus, of O'Neill, 212 South Fork; Jimmy Sawyer, of Inman, Victory Boys and Girls; Bridget Boyle, of O'Neill, Riverside.

**Home grounds**—Edward Boyle, of O'Neill, Riverside. Girl's record—Marie Schneider, of O'Neill, Riverside.

**Achievement**—Edward Boyle, of O'Neill, Riverside. Club week trip—Murray Mellor, of Atkinson; meat animal medal—Wayne Hoffman, of Chambers; beef medal—Beverly Small, of Amelia; dairy medal—John Engler, of Stuart; certificate—Caroline Skopec, of Stuart;



In case anyone suggests to you that Sunday's and Monday's storm paralleled in any way, manner, shape or form the Hurricane Blizzard of March 7, 1950, show them these pictures. Top panel illustrates how last year's 100-mile-per-hour gale drove sugar fine snow into every crevice and the formations of packed

snow presented a sight never before seen by O'Neillites. Snow was piled high, too, almost obscuring the theater marquee on O'Neill's Douglas street. An aerial view of the town digging out from the Hurricane Blizzard is shown below.



club week registration—Patrick Boyle, of O'Neill; member's service medal—Alice Whaley, of O'Neill; conservation camp trip—Joelyn Backhaus, of O'Neill; certificate for rural arts and recreation—Riverside 4-H club, Clover 4-H club, 212 South Fork 4-H club, Green Valley Blue Birds 4-H club; achievement medal—Beverly Small, of Amelia. The following clubs were recognized as being reorganized: O'Neill Eager Beavers, O'Neill Willing Workers, Up and At It, Stuart Elkhorn Valley, Sons of

the Soil, Eagle Hustlers, Curly Q's, Fancy Ropers, Victory Boys and Girls, Sunnyside, Green Valley Blue Birds, Riverside, Eagle Creek, Cleveland, 212 South Fork, Nifty Needlers, Clover club, South Fork Community, Silver Star Sisters, Sandhill Billies, Kitty Clover, Martha, Wide Awake Bird club, Busy Beavers, Hoosier Hot Shots.

### Ewing High Posts New Honor Roll

EWING—During the first six weeks of the second semester at the Ewing high school, the following students received no grade below B as an average grade for the six weeks' period in any subject.

**Seniors:** Keith Bartak—3 A's, 1 B; Leola Cary—2 A's, 2 B's; Sally Christon—4 A's; Beverly Montgomery—4 B's; Thelma Primus—2 A's, 2 B's; Jerry Rotherham—1 A, 3 B's; Dwight Schroeder—1 A, 3 B's; James Weber—4 B's; Carol Wulf—2 A's, 2 B's.

**Juniors:** Levon Gunter—2 A's, 2 B's; Jackie Mosel—3 A's, 1 B; Patricia Rotherham—1 A, 3 B's; Nick Sojka—2 A's, 2 B's; Patty Vandersnick—1 A, 3 B's; Fred Van Vleck—2 A's, 2 B's.

**Sophomores:** Geraldine Bauer—2 A's, 2 B's; Lois Ann Bergstrom—4 A's; Joan Binkerd—2 A's, 2 B's; Marcia Gibson—3 A's, 1 B; Bernadine Rotherham—4 A's.

**Freshmen:** Shirley Angus—4 B's; Tommy Christon—4 A's; Sandra Dierks—4 B's; Judy Jeffries—3 A's, 1 B; Kenneth Lee—1 A, 3 B's; Rosetta McDonald—1 A, 3 B's; Patrice Mosel—4 B's; Bernadine Sanders—1 A, 3 B's; Susanne Slizoski—1 A, 3 B's; Jeanne Welke—4 A's; Marilyn Weyrich—4 A's.

**CARD OF THANKS**

WE WISH to express our thanks and appreciation for the floral offerings and many acts of kindness by our friends and neighbors at the time of the death of O. L. Reed, our husband and father. Also our thanks to the Masonic and Odd

Fellows lodges and the American Legion for their helpfulness.

MRS. O. L. REED  
DR. G. A. CLINTON  
45p50.

"Voice of The Frontier," Mon., Wed., Sat. 9:45 a. m., WJAG, 780 k. c.

### Ticklers



"We'll turn right, drive slowly and worry the folks on this street!"

### To Gravel No. 11 South from Butte

Maintenance graveling of Nebraska highway 11 from Butte south 14 miles is among the projects to be included in an April letting, according to an announcement Wednesday from the state highway department.

About 2,200 cubic yards of gravel are to be placed on the highway.

Bids for bituminous surfacing the 1 1/2 miles of newly relocated and constructed highway 20, east of Chadron, also will be taken at a letting April 5. This work will begin at Spruce street in Chadron and continue east on highway 20 to Bordeaux, near the Dawes-Sheridan county line. Within the city limits of Chadron, the highway will be surfaced to a 34-foot width extending to the existing curbs and gutters. The rural surfacing will be 24 feet wide. A crushed limestone base course from 3 to 5 inches thick will be laid down first, followed by a 3-inch thick bituminous mat and an armor coating.

The grading, culverts and bridges on this relocation of No. 20 was completed in 1950.

While the highway is being surfaced, traffic will go north out of Chadron, east 2 1/2 miles, south a mile and then proceed along the old highway route, north of Bordeaux Creek. The work advertised for bidding includes the graveling of the road connecting with the old highway.

The surfacing of the highway will require more than 419 thousand gallons of asphaltic oil and about 54 thousand cubic yards of limestone, sand and gravel, according to highway department estimates.

### EWING NEWS

Mrs. Hallie Maben received a long distance telephone message when her son, Conrad Maben, navy, called her on Monday from Honolulu, Hawaii. He is now at Pearl Harbor, but has been stationed in Korean waters for several months. His ship assisted in evacuating U.N. troops from ports in Korea. He left the United States on August 27, 1950.

Miss Donna Rudisil, home economics instructor of the Ewing high school, attended the fourth annual joint convention of the Nebraska home economics association and the Nebraska district association which was held at the Cornhusker hotel in Lincoln March 8 and 10. The theme of the meeting was "Home Economics in Mid-Century." Miss Fern Pruden, of Ewing, instructor of home economics in the Neligh public school, also attended the convention.

### Loan Limitations Are Increased—

J. O. Walker, Farmers Home administration county supervisor for Boyd and Holt counties, has already been notified that the farm ownership loan limitation in those counties has been increased to \$16,000.

Farm ownership loans can be made to eligible farmers to purchase family-type farms, or to enlarge or develop farms now owned. These loans are made for a period of 40 years to those who are unable to obtain adequate credit from any other source.

The Farmers Home administration also makes farm housing loans to land owners who are unable to finance the construction or repair of buildings on their farms. Such loans are made for a period of from 5 to 33 years.

The O'Neill FHA office is located in the courthouse annex, and Mr. Walker is in the sheriff's office in Butte every Wednesday afternoon.

### "The Perfect Idiot"

The St. Mary's academy senior class will present its class play, "The Perfect Idiot," tonight (Thursday) at the public school auditorium. The curtain will rise at 8 p.m.

"The Perfect Idiot" is a three-act farce comedy. Members of the cast include: Claire Cavanaugh, Gerald Wills, Lou Ann Verzanni, Morris Howard, Jack Carney, John Wallen, Gene Stasch, John Vitt, Mary Murphy, Barbara Muff, Mary Hynes, Luanne Fritton, John Uhl, Helen Ann Wallenstein, Mary Lois Kelly, Larry Krysl, Connie Murphy and Marlene Kaster.

USE

**WANT ADS**

RENT

SELL

BUY

TRADE

ETC.

**THE FRONTIER**  
Phone 51

## Let's Talk About

# — THE — Amana Food Freezers!

Your AMANA FOOD FREEZER makes it possible to save \$7.06 per person per month. The more you use your AMANA the more you save.

You make it a part of your daily life . . . living out of it for breakfast, lunch, dinner, and between-meal snacks . . . restocking it when you visit a farm or roadside stand, or when you take advantage of sales at the store or quantity purchases at a savings. Like thousands of other freezer families, you'll change your way of living once you have your Amana. You'll use it more and more because you'll like the frozen food better. And you'll find that the more you use it the more you save. The savings shown in the following table are really conservative estimates. People who plan their buying and cooking so they can use their freezers constantly, save much more.

From the Amana you can select the size, style, and model best suited to your individual requirements. Regardless of whether it's the six foot chest model or the big stainless steel "walk-in," every Amana Food Freezer reflects the intense pride of workmanship of the skilled Amana craftsmen.

Start enjoying a better way of living today—the Amana Food Freezer way! Thrill to out-of-season delicacies, better, more balanced, more nutritious meals, and all the while save money from your present food budget. That's not all, you'll save time and work, too!

Remember, for the finest in living, the finest in food freezers — Amana is your best buy.

Ask About and See the AMANA Today!

Phone 415

**Jacobson's**

Across from The Golden

## Notice to Taxpayers

Assessment starts March 10th, 1951, and continues to April 20. It is the duty of each taxpayer to see that their schedule is made out and returned to the county assessor.

I have been appointed to help the citizens of O'Neill to fill out their schedules.

Beginning March 13th, I will be at the Buick garage, north of the First National Bank, from 8 till 6. Don't put it off till the last day for you may be unable to get help.

**H. W. TOMLINSON,**  
Deputy Assessor