


**Santa says he will be at**  **Saturday Afternoon**

**He wants all the kiddies to come in and see him so he can learn what they want for Christmas!**  
**GIFT FOR YOU KIDDIES, TOO!**

**LADIES' WINTER COATS** Reduced to Clear  
 Nice Variety of Sizes and Colors



**Free Turkey**



All you have to do is come in our Store and register. Some lucky customer will have FREE TURKEY for Xmas.

**CHRISTMAS TREE STAND**  
 For Any Size Tree  
**95c**

Twist Link  
**Tire Chains**  
 600x16 — Reg. 8.45  
**Special \$7.45**

White Platonite  
**Cups & Saucers**  
 Reg. 8c each. Special—  
**2 for 8c**

**ALL STEEL WAGONS**  
 28 x 13 With Large Tires **\$5.98**  
 21 x 10 **\$2.10**

Child's 2-Sewed  
**Play Broom**  
**39c**

**Waffle Iron**  
 Knapp Monarch. Reg. 14.95  
**Special \$8.95**

**MECHANICAL SPARKLING FREIGHT TRAIN**  
**\$2.98**

**Christmas Tree Light Set 85c**  
 With 8 Bulbs

Outdoor String **2.59** Large 15-Bulb Multiple Set **3.98**

12" TOY DRUMS  
 All Metal Frame  
**65c**

**BLACKBOARD**  
 On Stand  
**2.98**

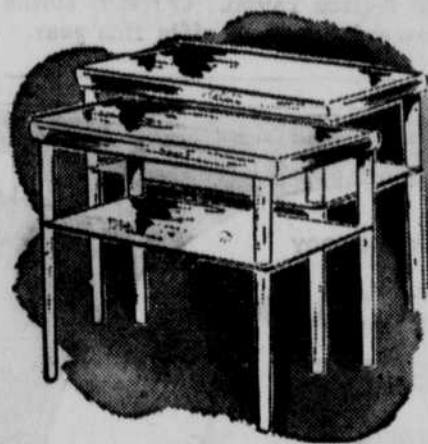
Buy HIM An Electric  
**DRILL PRESS**

for Christmas  
 Heavy 1/2-In. Drill on Stand with Jacobs Chuck  
 Reg. 34.95

Eri., Sat., Mon. **26.95**  
 Only

**JUST RECEIVED!**  
 ANOTHER SHIPMENT OF  
**TOYS**  
 SOMETHING for EVERYONE

WHEAT OR RICH WALNUT FINISHES!  
**Modern End Tables**

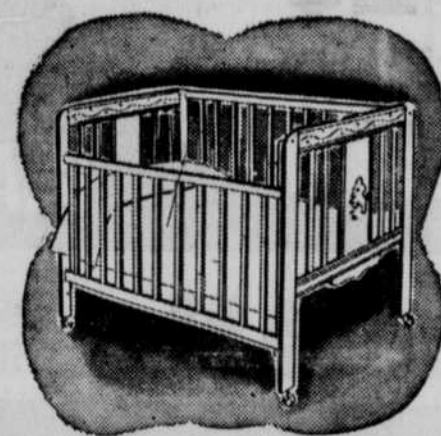


**13.50 OR 6.75**  
 pair each

- Beautifully Styled!
- Extra Shelf for Magazines
- All Sturdy Hardwood

Choose a pair of these thrifty priced end tables for your livingroom! Newest styling with rounded corners, tapered legs!

Complete with Steel Sagless Spring  
**DROP-SIDE CRIBS**



**19.95**

1.25 per week, payable monthly  
 Baby can sleep in this crib 'til he's 6 years old! Well built of solid hardwood to give years of service! Legs are mounted on easy-rolling casters. Choice of natural, maple finish. Tufted Crib Mattress, \$4.69



Pastel China Base  
**TABLE LAMPS**  
**3.95**

So fresh and pretty for college or home. With braid-trimmed plastic shades. Value!



Deluxe Chrome Trim  
**METAL SMOKERS**  
**2.35**

Attractive chair-side smoker with ash-disposal! Baked crackle finish. Taupe, brown.



Lawson Style Steel  
**KITCHEN STOOLS**  
**3.49**

Heavy gauge steel. Braced legs. Rubber cushioned feet. Red, yellow, blue, or white.



6-Way Indirect  
**FLOOR LAMPS**  
**8.88**

10.95 Value  
 Popular 6-way lamps at a new low price! Ivory or bronze. Colorful braid-trimmed shade.

Cozy Luxury at a Special Low Price!  
**Chenile ROBES**



**4.98**

Intriguing design overlaid on a handsome skirt!

Comfortable wrap-around style with tie belt across the front. Pointed shawl collar, big roomy pocket!

Choice of aqua, blue, melon, or cherry. Sizes 12 to 20.



**PLATFORM ROCKERS**

Upholstered in Frieze or the New Velon Plastic.

**49.95**

In Hi-Pile Velour **57.50**  
 In Tapestry **39.50**



Roomy 4-Pocket Style  
**MAGAZINE RACKS**  
**4.59**

Thrifty priced walnut finish rack keeps magazines and newspapers always in order!



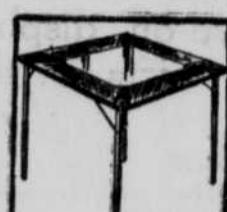
**Waterfall Chests**  
**47.95**

Low Down Payment and Terms  
 Haddon Hall exclusive! Level-lift tray. \$250 moth insurance policy!



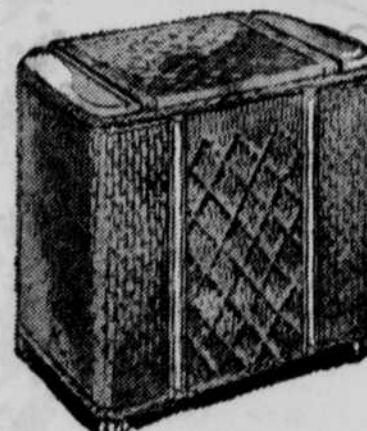
**2-Tone Hassocks**  
**4.39**

Kapok cushion top! Vinyl-kote for long wear. Many colors!



**Card Tables**  
**4.39**

Sturdy built Table at a thrifty price! Steel legs, metal corners.



**Bench HAMPERS**  
**6.75**

**Boys' Satin Twill JACKET**

Bomber style, mouiton lamb collar, two slack pockets, all wool interlined. Reg. 9.95 Value

**8.00**

Color-Rich, Neat Tying, Smart Patterns!  
**MEN'S NECKWEAR**



Rayon crepes, satins, twills, and foulards. Rayon lined ends and wool interlining gives these ties that smooth draping, knife look. Bold and medium patterns in assorted lively contrasting colors... add a keener "flavor" to your suits and shirts!

**1.00-1.50-2.00**