

All-Holt County Football Team--1950 Cards, Eagles Grab Most Honors

SECTION 3 — PAGES 17-24

THE FRONTIER

O'NEILL, NEBR., THURSDAY, DECEMBER 7, 1950.—PAGE 17.



KEN BATENHORST
Stuart
Halfback

JOHN JOE UHL
St. Mary's
Halfback

JACK CARNEY, St. Mary's
Center

DON CALKINS, O'Neill
Quarterback

DWIGHT SCHROEDER, Ewing, End →



JERRY WANSE
St. Mary's, Tackle.

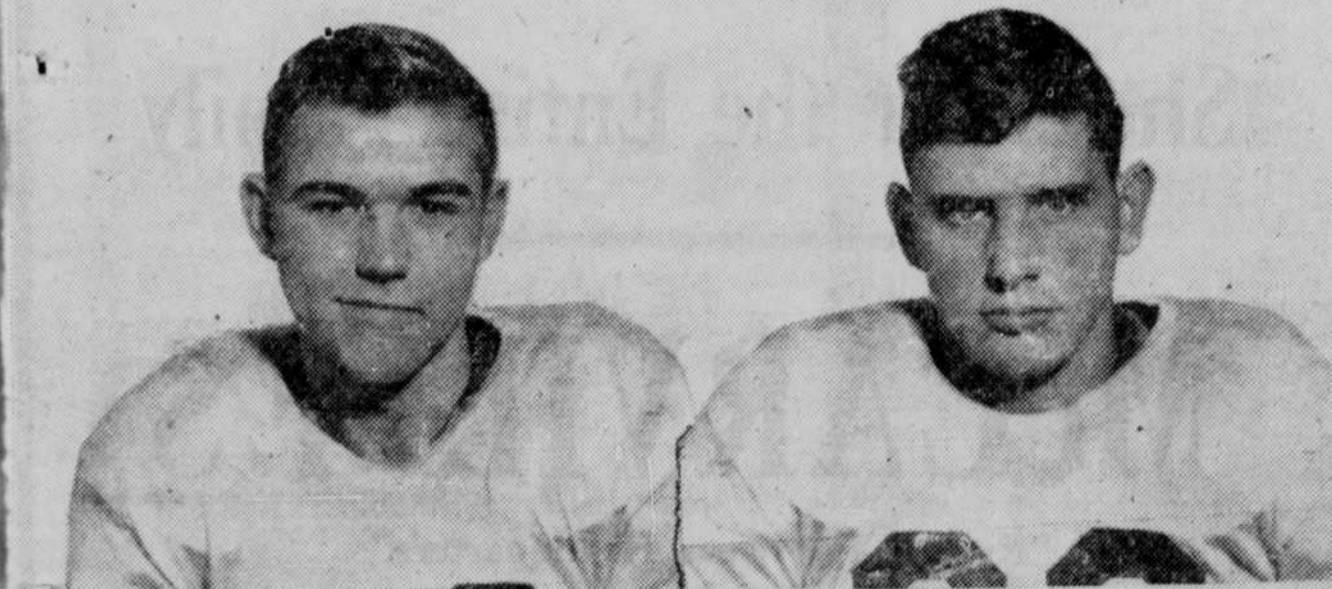


JOHN OSBORNE
Atkinson
Fullback



CLAYTON GOKIE
Atkinson
Guard

LARRY KRYSL, St. Mary's, End



GENE SEGER, O'Neill
Guard

DON KLOPPENBORG, O'Neill
Tackle

Abundance of Backs and Lack of Good Lineman Makes Picking Difficult

By a Staff Writer

The Frontier is pleased to present its mythical all-Holt county football team for 1950. But not without certain misgivings. There was an over-abundance of backfield material and a pronounced lack of linemen qualified for the all-star laurels. Consequently competition was keen for the backfield berths while at least one line position went begging and a back (who couldn't be omitted because of the votes he did receive) was granted a line slot.

St. Mary's academy, of O'Neill, and O'Neill high school dominated the honor list with four and three representatives, respectively. During the season St. Mary's won four games, lost three and tied one while the O'Neill Eagles won three and lost five.

Atkinson high school landed two berths — one backfield and one line—while Stuart and Ewing placed one each. The only Holt team failing to place on the first team was Chambers.

The make-believe backfield would be no pushover. If banded together, Don Calkins (O'Neill high), John Osborne (Atkinson), John Joe Uhl (St. Mary's) and Ken Batenhorst (Stuart) could make tough going for any opposing prep line in the area.

Calkins, 16, a junior, was hurt early in the season and didn't hit his stride until late. A hard runner, good passer and a fine tackler, he was the most reliable performer in the Eagles' backfield. In O'Neill's last three games of the season, Calkins produced 58 points. Calkins did O'Neill's kicking.

Osborne, a repeater from the 1949 all-Holt team, has still another year of competition. He was Atkinson's leading scorer, was always good for yardage in the clutch. Osborne was a power on defense and for the second consecutive year was a 60-minute man for the Balers, who finished on the wrong side of the ledger. Against Springview this year Osborne was sprung on a statue of liberty play and went 95 yards to score. Last year he was a lineman on the honor team.

Uhl, St. Mary's senior, was the level-headed quarterbacking sparkplug for the Cardinals, who had a good season considering the undefeated record in 1949 and the subsequent graduation toll. Uhl was a hard runner, he led the Card pack in scoring, and defensively he was indispensable.

The only Stuart Bronc to make the dream team was Batenhorst, a senior back. He was Stuart's leading scorer in a season which saw the Broncs win only one game. The Stuart defense left a lot to be desired except for Work Horse Batenhorst's play; He made 95 percent of the tackles, according to an observer who knows. He slugged down more than his share of enemy passes during the campaign and he was a bright spot on a team that needed more of the same.

Don Hoffman, a Chambers back, pressed the Calkins-Osborne-Uhl-Batenhorst crowd for the honors, probably one reason he lost out was because too few voters saw him play. Hoffman was a marked man on every grid, he represented most of the Coyotes' offensive strength and he's expected to shine come the autumn of 1951.

The 1950 all-Holt line lacks the finesse and maturity of its predecessors. Obviously the less-glamorous men in the line had a rough go on all six Holt teams during the past season. Because most of the teams were pushed around each week, the gems were hard to spot at the end, tackle, guard and center positions.

Chosen at end were: Larry Krysl (St. Mary's) and Dwight Schroeder (Ewing); tackle—Don Kloppenborg (O'Neill) and Jerry Wanser (St. Mary's); guard—Gene Seger (O'Neill) and Clayton Gokie (Atkinson.) The center is Jack Carney (St. Mary's).

Carney, St. Mary's senior, played both center and halfback for the Cards this season and earned the mythical honor by virtue of his all-around play.

He was an apt hole-maker on offense and could knife through interference to haul 'em down from his defensive position. He was a good blocking back and when called upon could carry the mail effectively.

Krysl latched on to four touch-down passes during St. Mary's six-man campaign as well as catching numerous other flips that piled up yardage. Defensively he was a "perfectionist," one ballot stated.

Schroeder, the Ewing entry, is the backfield performer who couldn't be overlooked on such an aggregation. So he was given an end berth. He was Ewing's fastest man and was at his best when the Tigers were on the offensive. Kloppenborg, usually head-and-

shoulders above other Eagles on defense, was the only unanimous choice for the 1950 team. He was mentioned by every voter! He was a rugged tackler (his 190 pounds helped emphasize this), a fine blocker and he was a morale factor for a team that had lots of rough sledding.

Wanser, of St. Mary's, is the only sophomore on the honor team. He played end for the Cards and developed rapidly as the season moved along. He specialized at getting into the opponents' backfield before the plays got underway. His selection here will come as a surprise to some observers, perhaps. That he earned a berth cannot be disputed when his performance for the season is analyzed.

The Seger and Goeke selections might also surprise some, but they got the votes. Seger, a 6 foot 1 inch junior, laid down some key blocks at the right time and the guys with the voting pads remembered. He was a good blocker. One official said Seger was as good a lineman as he'd seen in the county.

Goeke is a 200-pound 17-year-old lad who usually went 60 minutes for the Balers. The kid has an even disposition, was very aggressive and delighted in breaking up opposition plays. The brains of the other team usually discovered early in the game there was no use trying to go through Goeke.

This is the fifth annual all-Holt county football team selected by The Frontier in cooperation with the coaches, superintendents and officials who have been working with these teams.

Like most honorary teams, the award means nothing except for newspaper publicity.

O'Neill, Atkinson, Ewing and Stuart played 11-man football while St. Mary's and Chambers competed in six-man.

Atkinson played three Holt foes while Ewing, Stuart and O'Neill faced one each. St. Mary's and Chambers played all games against out-of-county opponents.

EWING TIGERS ARE NIPPED IN OPENER

EWING — The Ewing high school Tigers lost their opening game to Brunswick Friday evening, at Brunswick, 16-15. A final effort by Warren Klinefelter, which would have won the game for Ewing, barely missed.

The Ewing reserves won easily, 20-16. Coach Pennington, using every player in suit. Klinefelter led the reserves with 10 points followed by Pollock with 6. Dwayne Hobbs broke up a considerable number of Brunswick plays and it appears that Klinefelter and Hobbs are pressing for first team berths.

The schedule:
Dec. 1—Brunswick, there.
Dec. 8 — Page (Conference), there.
Dec. 12—Tilden, here.
Dec. 15—Elgin, there.
Dec. 21—Meadow Grove, here.
Jan. 2—Osmond (Conference), here.
Jan. 5—Clearwater (Conference), here.
Jan. 9-12 — Elkhorn valley tournament (Brunswick.)
Jan. 16—Orchard (Conference), here.
Jan. 19—Inman (Conference), there.
Jan. 23-26—Holt county tournament, (O'Neill.)
Jan. 30—St. Boniface, here.
Feb. 9—Battle Creek, there.
Feb. 13—Brunswick (Conference), here.
Feb. 16—Inman, here.
Feb. 20—Chambers (Conference), there.
Feb. 23—Oakdale, there.*

1950 All-Holt County Football Team

Player	School	Pos.	Age	Wgt.	Hgt.	Year
DON CALKINS	O'Neill	QB	16	165	5'8 1/2"	Jr.
JOHN OSBORNE	Atkinson	FB	17	180	6'1"	Sr.
JOHN J. UHL	St. Mary's	HB	17	160	5'9"	Sr.
KENNETH BATENHORST	Stuart	HB	17	150	5'9"	Sr.
JACK CARNEY	St. Mary's	Center	17	175	5'10"	Sr.
DWIGHT SCHROEDER	Ewing	End	17	155	5'10"	Sr.
LARRY KRYSL	St. Mary's	End	17	165	5'11"	Sr.
DON KLOPPENBORG	O'Neill	Tackle	17	190	6'2 1/2"	Sr.
JERRY WANSE	St. Mary's	Tackle	16	160	5'8"	Soph.
GENE SEGER	O'Neill	Guard	16	165	6'1"	Jr.
CLAYTON GOEKE	Atkinson	Guard	17	200	6'	Jr.

HONORABLE MENTION
Backs—Don Hoffman, Chambers; Jay McConnell, O'Neill; Alston Rasmussen, Chambers; Don Shald, Stuart; Jerry Willis, St. Mary's; Don Godel, O'Neill; Jim Good, Ewing; Don Donohoe, St. Mary's.

Linemen—Pat Knapp, Ewing; Jim Hytrek, Stuart; Dean Cadwallader, Stuart; LaVern Timmermans, Stuart; Floyd Butterfield, Atkinson; Dick White, Atkinson; Jerry Rotherham, Ewing; Ray Harmon, O'Neill.

hand her a Bag at CHRISTMAS

She'll Love It!

You'll Love Selecting It Here!

Genuine steerhide satchel bag... hand-tooled dressy envelope bags...

\$21 to \$36

Make this her Sterling Inlaid Christmas..

WEATHERPROOF

Wyler
incaflex

She'll remember this Christmas every day for years... as she sets her table with your gift of lovely, longer-lasting Holmes & Edwards. It's the finer silverplate inlaid at backs of bowls and handles of most-used forks and spoons with blocks of sterling silver. See it now!

WATERPROOF — 17 jewels, sweep second hand, luminous dial.

\$29 Up

Any weather, any activity, anywhere — Wyler Incaflex never has to leave your wrist. Sealed against water, secure against shock.

How the flexible balance wheel absorbs shock:

ordinary balance wheel — rigid spokes relay shocks straight to vital balance mechanism.

Incaflex actually gives with the shock in all directions... fully guaranteed against damage.

HOLMES & EDWARDS
STERLING INLAID SILVERPLATE

HERE AND HERE 'S Sterling Made

52-Pc. Service for Eight 69.75

Free Engraving

Your name will be ENGRAVED FREE on all watches sold at our store.

GIVE A WATCH FOR XMAS

WYLER, HAMILTON, ELGIN
WATCHES, Up from \$29.95

We Give S & H Green Stamps
— Open Thursday Evenings —

McCrary's Jewelry
— O'Neill —