

Fat Calves Class

- 12. Angus Heifers
Blue Red White
- 13. Shorthorn Heifers
Blue Red White
- 14. Hereford Heifers
Blue Red White
- 15. Angus Steers
Blue Red White
- 16. Shorthorn Steers
Blue Red White
- 17. Hereford Steers
Blue Red White

A purple award group throughout Dairy. All breeds competing for purple.

29. Dairy Heifers, born before July 1, 1949.

Blue ribbon, \$5.00; Red ribbon, \$4.00; White ribbon, \$3.00. All other \$2.00. Purple award group.

30. Dairy Cows in production. Blue, \$5.00; Red, \$4.00; White, \$3.00. Purple award group.

31. Club group of three Dairy animals. Any club may select three animals from one class and show as a group.

32. The Ewing Co-Operative Creamery will give a Special award in addition to the regular prize of a maximum of \$50.00 to be divided among the blue and red ribbon winners in the Junior Calf division with not more than \$30.00 to the blue awards and not more than \$20.00 to red awards, as the show warrants. No blue shall receive more than \$5.00 and red not more than \$3.00.

Lot 4 — HOGS

4-H members carrying market hogs or Sow and Litter projects are eligible to show in this lot. An animal can be shown only in one class in 4-H division.

33. Fat Barrow or Gilt
Blue Red White
Blue, \$3.00; Red, \$2.00; White, \$1.00. All other, 50c. Purple

group 50c additional.

34. Litter of Pigs
Blue Red White
Blue, \$10.00; Red, \$7.50; White, \$5.00. All other \$2.00. Purple group \$1.00 additional.

Lot 5 — SHEEP

Only 4-H club members carrying sheep projects may compete.

35. Fat lambs
Blue Red White

36. Breeding Ewe Lambs
Blue Red White

Blue, \$3.00; Red, \$2.00; White, \$1.00. All other 50c. Purple groups, 50s additional.

Lot 6 — Stock Saddle

37. Yearling Colts, 1 yr. & under
Blue Red White

38. One to two year old
Blue Red White

39. Over two years of age
Blue Red White
Blue, \$5.00; Red, \$4.00; White, \$3.00. All other \$2.00. Purple award, maximum \$5.00.

Stocker & Feeder — Steers & Heifers

- 18. Angus Heifers
Blue Red White
- 19. Shorthorn Heifers
Blue Red White
- 20. Hereford Heifers
Blue Red White
- 21. Angus Steers
Blue Red White
- 22. Shorthorn Steers
Blue Red White
- 23. Hereford Steers
Blue Red White

Club Group of Three

Baby Beef, Stocker Feeder, Beef Breeding

25. Any club may select three animals to show as a group. All three must belong in the same class such as Baby Beef, etc.

Blue, \$5.00; Red, \$4.00; White, \$3.00.

4-H Dairy Cattle

Blue, \$5.00; Red, \$4.00; White, \$3.00.

26. Jr. Division, Calves born after Jan. 1, 1950.

27. Sr. Division, Calves born July 1, 1949 to Jan. 1, 1950.

28. Each breed will have all divisions. Awards will be the same for each division.

Wanna House Moved?

We Specialize in

MOVING OF ALL KINDS ANYWHERE

Cecil Thornton

Chambers

Nebraska

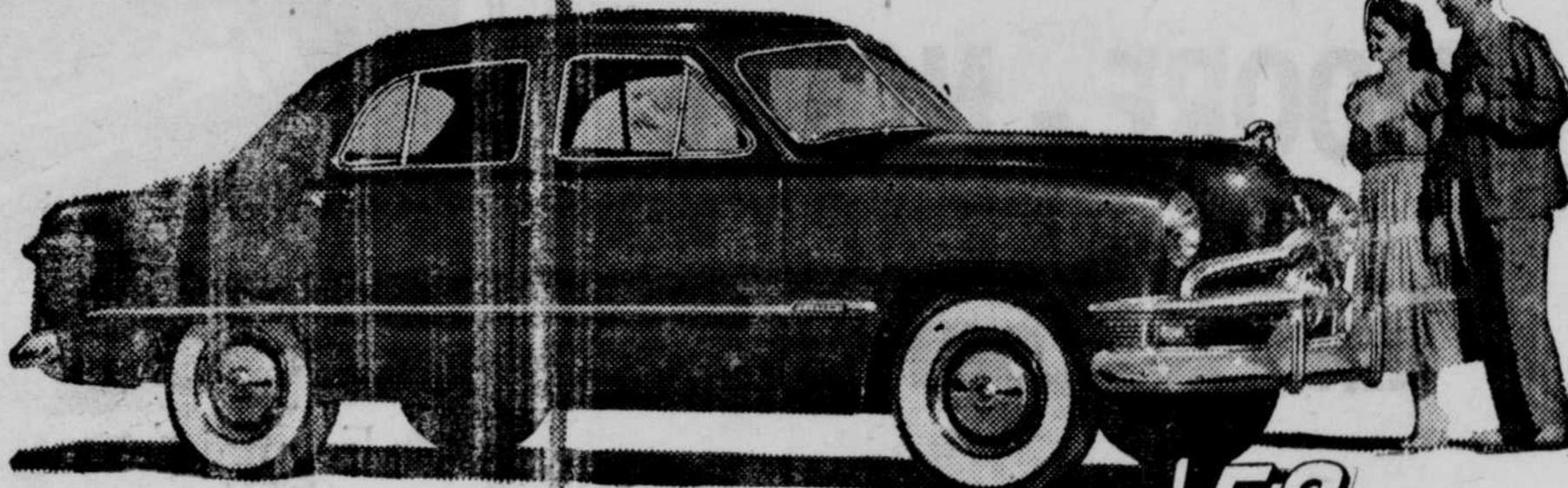
Upper bracket

Beauty



For the second straight year, Ford has received the Gold Medal award as "Fashion Car of the Year." And its good looks are matched, as owners will tell you, by its fine-car quality. Take a "Test Drive" in this '50 Ford and you'll find it has the "feel" of America's finest cars, too. We call it "big-car roadability" — you'll call it the smoothest, quietest ride on wheels. You'll agree Ford's

THE ONE FINE CAR IN THE LOW-PRICE FIELD



White sidewall tires and wheel trim rings optional at extra cost.

Low bracket

Cost

Compare the '50 Ford, feature for feature, with cars costing hundreds more! Only Ford, in the low-price field, offers an engine choice of either the 100 h.p. V-8 or its companion-in-quality, the 95 h.p. Six! Only Ford offers a "Lifeguard" Body! Only Ford offers 35% easier-acting King-Size Brakes! And no car offers a bigger combination of savings—savings in original cost, savings in running costs and the long run savings that result from Ford's high resale value.

"TEST DRIVE" IT AT YOUR FORD DEALER'S TODAY!

'50
Ford

**PHILLIPS
66**

Gasoline and
Kerosene

**PHILLIPS
66**

Motor & Tractor
Lubricants

Tank Wagon
Delivery

**DRY GOODS
APPLIANCES**

JAMES PLATT
— Chambers —

TAYLOR MOTOR CO.
- Chambers -

Welcome
To the Fair