

# Show-Down Near In Power Dispute

### Atkinson Editor Rallies People to Support Consumers

ATKINSON — There has been lots of bickering over Atkinson's power situation during recent months.

Realizing a major crisis had arrived, Editor Ralph J. Kelly of the Atkinson Graphic decided to do something about it. In the May 26 issue of the Graphic, he planted the issue squarely in the hands of the people by presenting them the facts.

The Atkinson power picture is rather complicated by now. Here's why:

For several years an old Elkhorn river valley transmission line has been inadequate in supplying power to the town. Consumers Public Power district engineers, handicapped after the war by personnel and material shortages, readied plans for a new transmission line into the city where a substation would be located in the "heart of the power load," an established principle for delivering power efficiently.

Two routings through the city were opposed for 1 reason or another. There was some litigation regarding 1 proposed route through the residential section.

Finally, it was decided to run the incoming power line from the east (O'Neill) along the Chicago & Northwestern railroad tracks to connect with a recently-built substation.

As if enough arguing and bickering and starting and stopping of construction crews had not already taken place, the Atkinson city council voted 3-2 in favor of asking Consumers to abandon the railroad route.

If Consumers were to agree, only 2 possible alternatives remained: 1) to build around the town; 2) to mend the old line. This would, in effect, deny Atkinson a 50-thousand-dollar improvement in their power setup and deny for a considerable period of time any chance to bring Atkinson's power service level up to standards enjoyed in most towns.

Following the 3-to-2 decision, L. C. Walling manager of the O'Neill district headquarters, ordered his crews off the railroad route and began to withdraw equipment and material.

This prompted Mr. Kelly to arouse the interest of the citizenry. The Graphic made ballots available to the people and maintained a ballot box at the newspaper office.

A special meeting of the council is to be held at which time the unofficial ballots will be counted and an unofficial consensus will have been learned.

The council's 3-to-2 action was induced by a petition that had been circulated earlier and bore 264 names.

A special meeting of the council was to have been held Monday night but 1 member was out-of-town and the session was not called. The special meet was tentatively planned to have been held Wednesday night, May 31, but if all councilmen were not present the results of the secret balloting were to be withheld until the next regular session of the board on Monday, June 5.

### William W. Watson Osborne's Manager

William W. Watson, 30, has been appointed manager of Osborne's shoe store here.

Watson, who is a veteran of World War II having served with the air force, has been manager at Osborne's Ord store for 1½ years before coming to O'Neill.

A junior partner with the Osborne firm, Watson is a native of Holt county. He was reared in the Inman community and graduated from the Inman high school. He attended the University of Nebraska at Lincoln from 1939-'41.

Married, Watson is the father of 2 children.

Meanwhile, Osborne's are expanding the store shelf space and will devote the south part of the store to a children's department.

### Superintendent Takes Over Today

L. C. Anderson, 54, of Benklemen, recently signed general superintendent for the city of O'Neill, assumes his duties here today (Thursday).

He was hired by the city council in special session on Tuesday, May 23.

Meanwhile, it has been announced that the city dump grounds has been fenced-in and, beginning Monday, June 5, the gate will be open each weekday from 7 a. m. to 7 p. m., but will not be open on Sundays. A custodian will be in charge of the grounds who will show persons where to dump garbage and burnable refuse during those hours.



LIONS CLUB QUEEN

Bernadette Hynes, 16-year-old, brown haired St. Mary's academy senior, Wednesday, May 24, was chosen to represent O'Neill in a state beauty contest to be held at Scottsbluff June 4-5, sponsored by the Lions club.—O'Neill Photo Co.

### LEVI RITTS, 82, EXPIRES MONDAY

#### Farmed North of O'Neill Until 10 Years Ago; Dies at Coleridge

Funeral services were held here Wednesday, May 31, for Levi Ritts, 82, a retired Holt county farmer.

Ritts, who had been living at Coleridge, died Monday morning at 8 o'clock of a heart disease.

Ritts had been a Holt county farmer up until 10 years ago when he retired. He had farmed north of O'Neill.

Born during 1868 in Chickasha county, Ia., the son of the late Joseph and Mary Ritts, the late Mr. Ritts came to Holt county during 1894 from Sioux City.

Only survivor besides nieces and nephews, is a brother, Michael Ritts, of Ravanna, S. D.

### 3 Injured In Holiday Mishaps

Two auto accidents — near Ewing and north of Redbird, respectively — marred the O'Neill region traffic record for the Memorial day holiday.

State Highway Patrolman Frank Dineen, of O'Neill, said he classified both accidents as "serious."

As a result of the 2-car Ewing mishap, a 75-year-old man is in a Norfolk hospital in "poor" condition after the car he was driving turned completely over and plunged down a 30-foot embankment.

The man is John G. Bauer. Bauer was described by Patrolman Dineen as the driver of the northbound car on state highway 108.

The driver of the other car was Wendell O. Potter, 29, of Long Pine. He was traveling west on U. S. highway 275 when the vehicles met at the intersection of the highways, a point one-half mile east of Ewing. This occurred around 2 p. m.

Wendell's wife and 2 passengers and a passenger in the Bauer car escaped serious injury. Bauer was taken directly to a Norfolk hospital.

Meanwhile, a 1-car accident occurred a quarter mile north of the Redbird postoffice. The car rolled completely over several times, sending its 2 occupants to the Lynch hospital.

Chauncey Hull 23, who farms north of O'Neill, was the driver of the car and Bud Carsten, a farmer in the Scottville community, was the occupant.

The accident occurred as the pair were returning from Lynch around 6 p. m. The car went out of control on a curve and hit an embankment rolling over several times. The car was demolished. Occupants were removed from underneath.



QUEEN OF MAY

Miss Nancy Beha (above), daughter of Mr. and Mrs. Paul Beha, was crowned Queen of May at St. Mary's academy.—O'Neill Photo Co.

### CHURCH OBSERVES 70TH BIRTHDAY

#### Page Methodists Hear Anniversary Sermon by Dr. Jackman

PAGE — The Page Methodist church on Sunday, May 28, held special services commemorating the 70th anniversary of the first worship service conducted by that denomination in this eastern Holt county town.

Dr. Everett E. Jackman, Norfolk district superintendent, delivered the anniversary sermon during the morning worship.

A basket dinner was served at noon in the church parlors.

Raymond Heiss was chairman of the program committee and presided over the program which was presented during the afternoon. The program was opened and closed by group singing. Special musical numbers were: a vocal duet "Beyond the Horizon," by Marvin and Dale Stauffer, and a vocal solo, "I Walked Today Where Jesus Walked," by Miss Mildred Haynes, of Denton.

Letters were read from former pastors and members of the Page church. Mrs. Eva Murten, of Inman, was the only former pastor or pastor's wife present. Mrs. J. I. Gray and Mrs. H. S. Harper gave the history of Methodism in this community.

The remaining pioneers and guests from a distance were called on to relate their outstanding experiences in relation to the church. Guests attended from Waverly, Stromsburg, Denton, Inman and Atkinson.

Rev. T. O. Brownfield pronounced the benediction. The late Rev. Bartley Blain perhaps had greater part in the establishing of Methodism in this community than any other person. He came to Nebraska in 1880 and immediately started to hold services. The first Sunday-school organized in this vicinity was held in the sod schoolhouse one-half mile south of the present site of Page and was known as Pleasant Valley Union Sunday-school.

About 1890 of 1891 Mr. Blain organized a Methodist church and Sunday-school which was held in the upstairs part of a feed mill located near the railroad track on the main thoroughfare of the newly-laid out town of Page. After the completion of Page's first frame school building, meetings were held there until the erection of the first church.

In 1893 Mr. Blain was appointed to Page and Maxfield. As there was no parsonage here he bought a 40-acre tract east of town, moved a house to it and made himself a home.

Two years later he retired and Rev. H. H. Chappel was appointed to this charge. During his first year here the first parsonage was built on the ground where the church now stands.

The quarterly meeting held November 22, 1897, authorized a committee consisting of Roy French, George Hunter, Mr. Blain and Mr. Chappel to investigate the possibility of erecting a church building. June 28, 1898, the first church building was dedicated. This church stood west of the present church.

In 1910 it was deemed advisable to have a larger church. The parsonage was moved back from the street and the present cement-block building was erected. It was dedicated August 13, 1911, by Rev. Thomas C. Hiff, of Denver, with Rev. E. T. George, district superintendent, and past ministers, Rev. W. C. Kelly and Mr. Blain, assisting. Rev. Joseph Stopford was then pastor.

The old church building was sold to James Shanner, who moved it to another part of town, where it was used as a part of a theater for several (Continued on page 8)

Poppy Day Sale Grosses \$256.25— American Legion auxiliary of Simonson post 93 Saturday grossed \$256.25 in the sale of paper poppies on the annual poppy day here.

Mrs. Dean Streeter, chairman in charge of sales, said "this was very gratifying from the O'Neill public."

Nine volunteer auxiliary workers and 4 high school girls students composed the sales staff.



BROWNIES POSE . . . Members of the O'Neill Brownie troops held an outing and picnic on Tuesday, May 23, at Ford's park and were induced to pose for The Frontier's cameraman, John H. McCarville. In the photo are (left-to-right): First row—Ann Saunto, Jackie Arbuthnot, Diane Corkle, Nancy Sipes, Norma McClellan, Mary Lou Yarnell, Puhla Reed; second row—Marjorie Marcellus, Beverly Peterson, Lucille Davidson, Bonnie Lawrence, Nancy Fetrow, Sandra Perry, Sharon Marcellus, Mrs. E. F. Sullivan (leader); third row—Nancy Jo Sullivan, Sharon Hartonft, Leona Niles, Joan Searles, Donna Asher, Mary Etta Perry, Sharon Heerman; fourth row—Kay McCarthy, Susan Hickey, Ellen Lohaus, Nila Jaszowskiak, Jane Petersen, Connie Kurtz, Ann Arbuthnot, Karen Hartonft.

### 'Ted' and 'Bill', 31- and 28-Years-Old, Are Reunited in Lush Meadow for Death Call

By MAUDE SILVERSTRAND Special Correspondent

ATKINSON — If horses could talk, "Ted" and "Bill" are having many riverside gabfests this spring.

"Ted" is 31-years-old. He was born in the ranch country south of Atkinson. He is a dark brown saddle horse, nearly grey now. He belongs to Harry McShane, a former sandhill rancher and cattlemen who retired last fall and is now living in Atkinson. That is when old "Ted" came to spend his last days along the river. Imagine his surprise when he was stabled with a sorrel horse he had known since they were both colts out in the sandhills. Their paths had been widely separated through the years.

"Bill" was the sorrel, is 28-years-old and was born at the J. P. Murphy home, south of Stuart. He was sold to John Silverstrand when he was a 2-year-old, along with another sorrel, who was called "Charley." Mr. Silverstrand was living with his parents at that time in the same ranch hill country where "Ted" was born. "Bill" and "Charley" spent their first season putting up hay for cattle that roamed those hills. Charley died in 1942 and belonged to the Silverstrands.

"Ted" if he could talk, would probably tell of raging blizzards and terrifying prairie fires. His job of course was to carry his master through season after season of branding, roundups, calving, etc. Many little calves have been carried to safety draped across his back, and many a wiley steer has bit the dust to be branded when "Ted" set his feet and stood firm.

"Bill's" life was very different. He went with Mr. Silverstrand to the farming country north of Atkinson that fall. He stayed with hopeful young farmers through blizzarding winds that dried the crops that he and his pal, "Charley," had put in—onetime as many as 110 acres with a 1-row lister. He felt the sting of sand in his eyes as it piled to a depth of 2 and 3 feet along the field. He was plowing furrows in it to hold the soil, if possible. He blissfully shook himself as the rain settled the dust and he was relieved of the hot sticky harness. The Silverstrands are hoping he will celebrate their 25th wedding anniversary with them this winter.

Dogs are faithful friends, I know, but to me, the picture of these 2 old horses grazing together along the river in a lush meadow is a satisfying one.

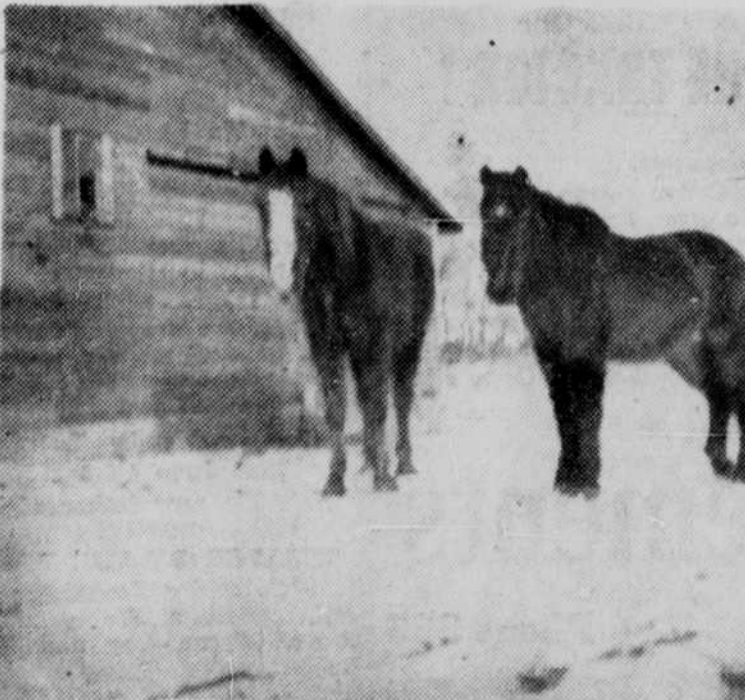
### Youth Center Fund Mounts

Contributions are still coming in for the proposed O'Neill youth center. Already the fund has reached the \$2,600 figure.

Most of the money was raised on the plan of converting a building which formerly housed an auto repair shop into a recreational building for Boy Scouts, 4-H club groups and other youth organizations.

Meanwhile, the committee is entertaining a possibility of erecting a more centrally-located building to serve as a center. The 40 x 70-ft. concrete block structure originally intended for conversion is located on the north outskirts of the city.

Mrs. Richard Minton and Mrs. Janie Judge went to Atkinson Monday, May 29.



"Ted" and "Bill" . . . they compare notes on more active days gone by.

### PRELIM COUNT SHOWS 506 GAIN

#### Unofficial Figures Will Be Released in 'Few More Days'

O'Neill today is a city of more than 3 thousand persons. O'Neill's population gain, percentage-wise, has been extraordinary — in fact, a bright spot in a state that has been depopulated during the past decade.

The Frontier learned Wednesday that 3,038 would be "fairly close" to the 1950 census figure for the city. In 1940 the count was 2,532 — or a gain of 506 persons.

Over the state most county-seats have been showing slight gains or holding their own, but there have been some examples of loss.

Most non-county seat towns that have been holding their own have been among the so-called better towns.

Most other communities have entered 1950 with a net loss. Unofficial reports have been released for Rock county, which has absorbed a substantial loss.

Holt county, likewise, is expected to lose in the neighborhood of a thousand people. Vernon Taylor, district census supervisor at Kearney, said Wednesday that unofficial figures for Holt county and its incorporated cities and towns are not yet available, but conceded that O'Neill's apparent population picture shows a "remarkable gain."

At Ainsworth, where enthusiasts predicted the new count would crowd the 2,500 figure, the 1950 mark may fall short of 2,000. Bassett turned in a slight gain.

Atkinson will show a gain of about 50 although earlier figures indicated it may have lost.

By virtue of depopulation that has taken place in the county, Holt may drop from a class 4-A county to a class 4 county.

Class 4-A counties are those with populations from 16,500 to 20,000; class 4, 13,000 to 16,500.

When counties are declassified salaries of county officers automatically become smaller.

### Injuries Fatal To Orchard Man

ORCHARD — After remaining unconscious 2½ weeks following an automobile accident, Warner ("Gus") Golter, 32, Orchard automobile dealer, died Monday afternoon, May 29, in a Sioux City hospital.

Funeral services will be held today (Thursday) at Orchard. Survivors include: Widow, 2 small sons and a small daughter.

Accident occurred near Laurel. Philip ("Buddy") Wirth, 21, son of Rev. and Mrs. P. J. Wirth, was injured in the accident.

### Dr. Vincent Will Intern at St. Louis

Dr. Keith E. Vincent, who graduated last week from the University of Nebraska college of medicine, will intern at St. Louis City hospital in St. Louis, Mo.

A son of Mr. and Mrs. Jack Vincent, he graduated from O'Neill high school in 1942, took 1 year of premedical training at the University of Nebraska and then entered the navy. He participated in the V-12 training with the navy at Northwestern university for 2 years, receiving his bachelor of arts degree.

Later he was stationed at Little Rock, Ark., and at the Great Lakes naval hospital near Chicago.

After the war he returned to Nebraska university to complete his doctor of medicine degree. While attending the university he was affiliated with Upsilon Nu of the Phi Chi fraternity.

### Witness Son's Graduation

Mr. and Mrs. L. M. Merriman went to Omaha Wednesday, May 24, to attend the graduation of their son Jim, on Thursday from the Creighton university college of commerce. Jim's fraternity recently honored him by awarding him a ring for his leadership.

Frontier for printing.