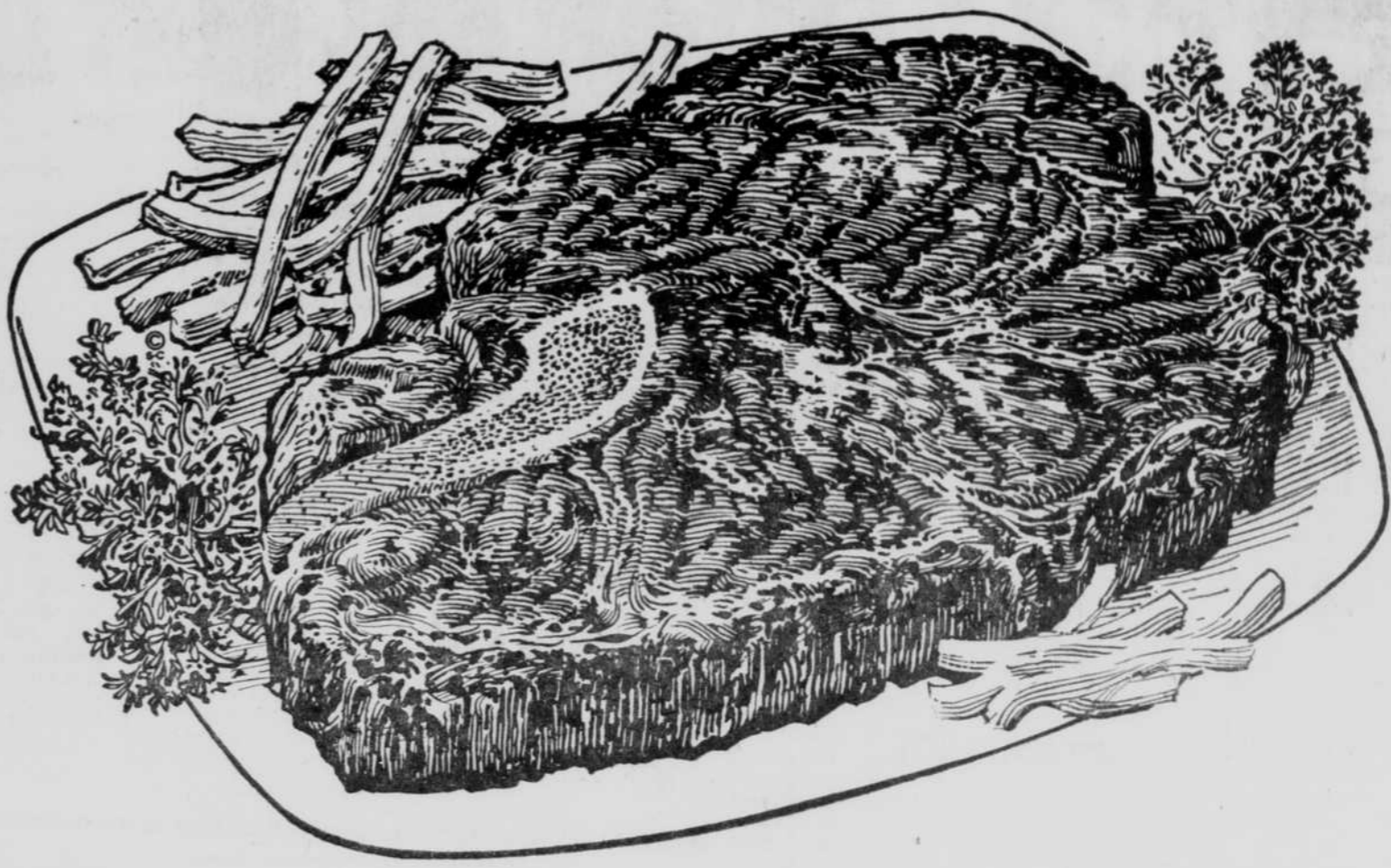


IT'S UNANIMOUS! MAKE MINE...

# STEAK



U. S. D. A. CHOICE  
CHUCK STEAK  
Pound

U. S. D. A. CHOICE  
RIB STEAK  
Pound

U. S. D. A. CHOICE  
ROUND STEAK  
Pound

U. S. D. A. CHOICE  
SIRLOIN STEAK  
Pound

U. S. D. A. CHOICE  
T-BONE STEAK  
Pound

All Meat  
**WIENERS**  
2 Lb. Bag  
**89c**

Morrell's  
Spiced  
**LUNCH MEAT**  
Lb. **49c**

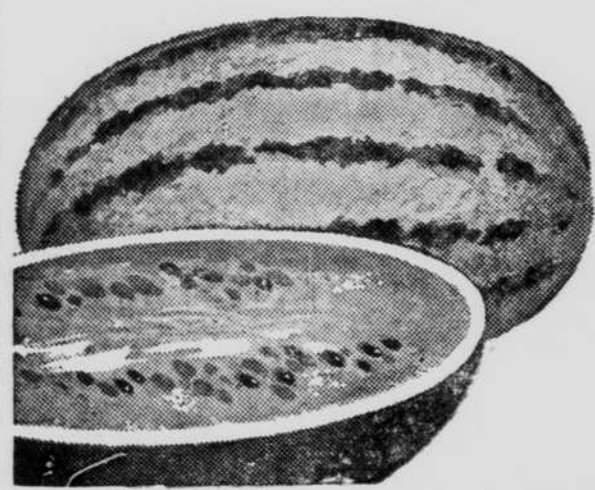
**BRAUN-SWEIGER**  
Lb. **49c**

Young Tender  
Fryers  
**TURKEYS**  
Lb. **35c**

Morrell's  
**SMOKIES**  
Lb. **49c**

**49<sup>c</sup> 59<sup>c</sup> 69<sup>c</sup> 79<sup>c</sup> 89<sup>c</sup>**

## PRODUCE SPECIALS



100% GUARANTEED RIPE

**Melons**  
Each **59c**

**Celery**  
CRISP—FRESH  
LARGE STALK **19c**

**New Potatoes**  
CALIFORNIA Red or White  
10 Lbs. **49c**



U. S. NO. 1  
FREESTONE

**PEACHES**  
17 LB. LUG  
**2<sup>29</sup>**



REGULAR OR BUTTERMILK  
**Pillsbury Biscuits** 3-oz. Tube **10c**

**Dog Food** GRAVY TRAIN 5-Lb. Bag **71c**

Van Brodie ASSORTED

**CEREALS**  
Pkg. of 10 **29c**

**SPRY**  
7c OFF  
3 1/2-Lb. Cans  
**79c**

**SUGAR**  
10-Lb. Bag **89c**

Sunnyvale  
**PINEAPPLE JUICE**  
46-oz. Can **25c**

DEL MONTE  
**TUNA** 4 Reg. Cans **\$1**

**NORTHERN TISSUE**  
4 Roll Pkg. **29c**

No Fuss! No Waste! GET THE DISH YOU WANT, FOR LESS  
**FROZEN FOODS**



**SNO-FRESH**

Cut Corn — Leaf Spinach

Peas & Carrots — French Fries — Broccoli Spears

**6** Pkgs. **\$1**

Tom Thumb  
**PIZZA**  
Each **89c**

Tom Thumb  
**STEAKETTES**  
1 1/2 Lb. Pkg. **89c**

Fresh Frozen  
Fillet of  
**HALIBUT**  
Lb. **49c**

Fresh Frozen  
**BULLHEADS**  
3 Lbs. **\$1**

FOLGERS

**COFFEE** LB. **65c**

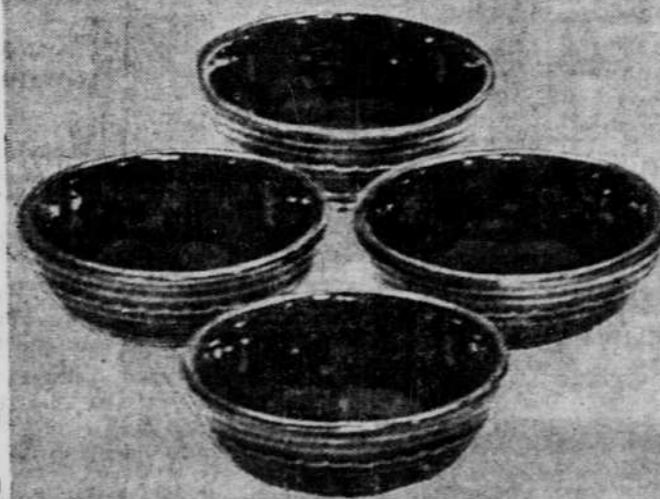
Mar-crest  
**OLD FASHIONED STONWARE**

Coupon No. 6A  
And 6B

**NOW VALID**

COUPON NO. 6A  
3 Piece Set Reg. .... 1.49  
Coupon Value ..... .50  
YOU PAY ONLY ..... .99

COUPON NO. 6B  
4 Pieces — Soup, Salad,  
Cereal Bowl  
Reg. Value ..... 1.49  
Coupon Value ..... .50  
YOU PAY ONLY ..... .99



SOUP, SALAD, CEREAL BOWLS—SET OF 4

Bon Air  
**ICE CREAM**  
Half Gallon **59c**

Hunt's Halves or Sliced  
**PEACHES**  
2 1/2 Can **25c**

Lark Orange and Grape  
**DRINK** .... 2 Cans **23c**

Pillsbury Apple Sauce  
**PAN. MIX** .... Pkg. **10c**

**BOOK MATCHES**  
Gin. of 50 **10c**

**THE NEW OUTLAW**  
WEST ONEILL

PRICES EFFECTIVE  
THRU SATURDAY,  
JULY 8th, 1961  
Quantity Rights  
Reserved