

Church Notices

METHODIST (O'Neill)
 Rev. Wallace B. Smith, pastor
 Thursday, February 4: Choir rehearsal at 7 p.m.; Methodist youth fellowship at 8 p.m.; building committee at 8 p.m.
 Friday, February 5: Dorcas circle meets with Mrs. O. W. French at 2 p.m.
 Sunday, February 7: Cherub and junior choirs at 9:30 a.m.; church school at 9:45 a.m.; worship service at 11 a.m.; membership training class at 7 p.m.
 Monday, February 8: The four commissions will meet at 7:13 p.m.; the official board convenes at 8 p.m.
 Wednesday, February 10: WSCS prayer cell at 10:15 a.m.; WSCS study group meets at 2 p.m. at the church.
 The attendance crusade continues in a successful way. Last Sunday there were 190 people at church. Of these, 119 were members. That's roughly 40 percent of the membership. Next Sunday let's have 200 in attendance and 50 percent of membership.

left. During these last meetings it would be a fine thing if all who have attended even one session of the study would try to be present for the remaining ones! Have you been to church this past month? We're keeping a close record! So far, the proportion of membership attendance is not so good. Next Sunday—February 7—we'd like all members of the church, along with their families, to be present! Let's fill your church with people!
 A few more folks are attending the church school each Sunday. No one knows enough about the Christian life. Make it a point to be at church and church school next Sunday morning!

ASSEMBLY OF GOD (O'Neill)
 Rev. Wayne A. Hall, pastor
 The revival will close with the service tonight (Thursday). We thank the Lord for all who have received help for spirit, soul and body. Many have testified to this fact.
 Sunday-school, 10 a.m.; worship service, 11 a.m.; story hour, 7:30 p.m.; rally, 8 p.m.
 Monday through Friday, February 8-12, 8 p.m., are the dates for the workers' training course taught by Rev. Clyde King, pastor of the Assembly of God church at Broken Bow. The study book that has been chosen is entitled, "Bible Doctrines," by Rev. P. C. Nelson. Anyone interested in a course like this is welcome.
 Thursday, February 11: Sectional fellowship meeting at Wood Lake, services at 2:30, 7 and 8 p.m.

METHODIST (Emmet)
 Rev. Wallace B. Smith, pastor
 There are only a few more sessions of the Bible study group

General Auto and Truck Repairing
 Albert ("Shorty") Dennis
 MECHANIC
Smith Motor
 O'Neill Phone 562

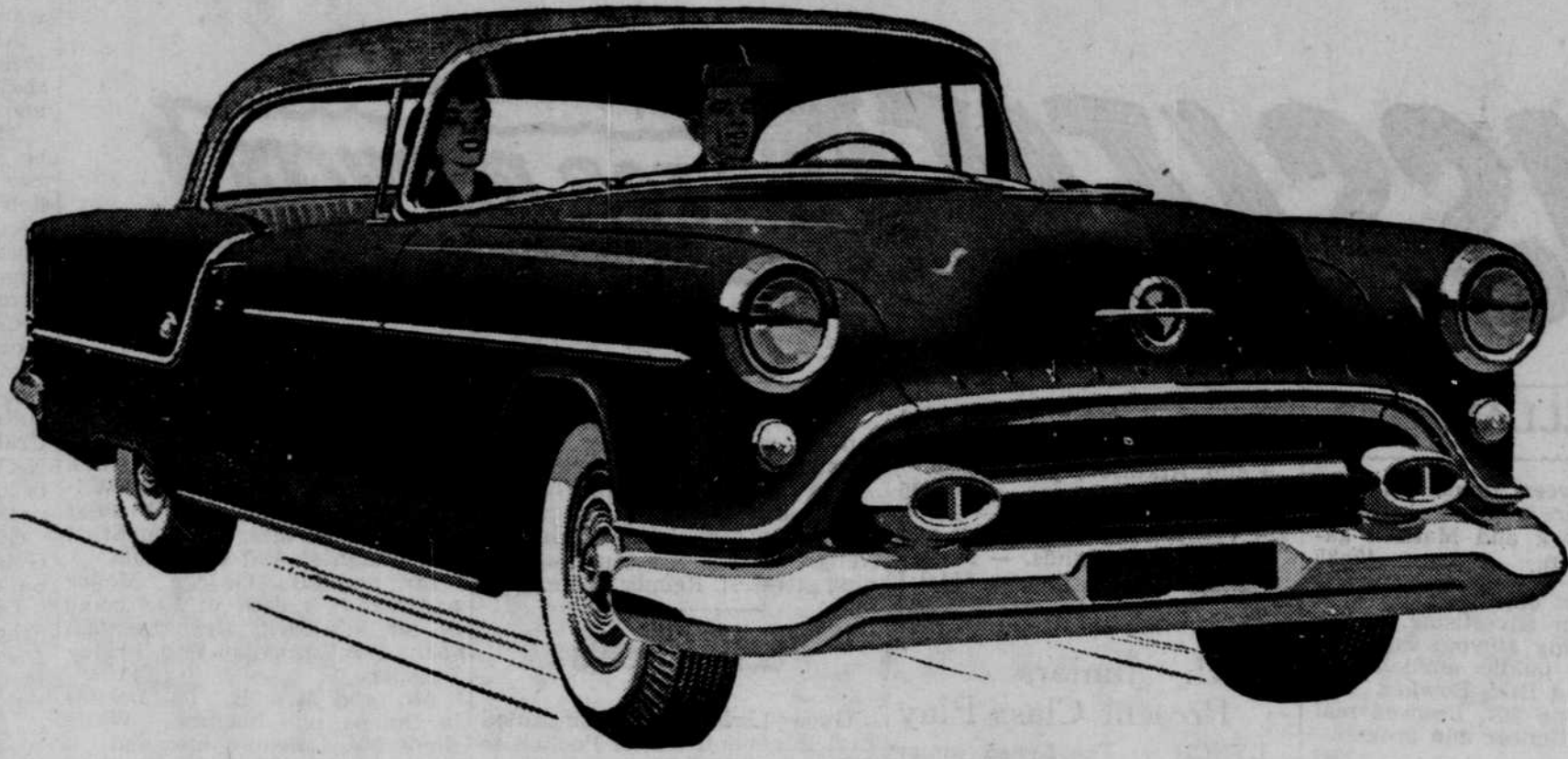
POLIO Benefit Dance
 at Chambers Legion Hall
Friday, Feb. 5th
 Music by Rhythm Ramblers

CENTER UNION (O'Neill)
 Rev. Melvin Grosenbach, pastor
 Midweek prayer meeting every Wednesday evening in the home of one of our members.
 Sunday, February 7: Worship at 10 a.m.; Sunday-school at 11 a.m.; young people's service and Bible study at 7:30 p.m.
 Some one asked Billy Sunday: "Why do you need to keep holding revival meetings? They don't seem to have a lasting effect?"
 He said: "Why is it that you need to take a bath so often and it doesn't seem to last?"

BETHANY PRESBYTERIAN (RFD, Ewing)
 Rev. Samuel Lee, pastor
 Miss Helen May, assistant to the pastor
 Worship, 9:30 a.m.; the Sunday-school hour follows the worship service; Sunday, 8 p.m., adult Bible study class meets at the church.
 Frontier for printing! Prompt deliveries!

CHURCH OF CHRIST (O'Neill)
 Corner of Sixth and Grant
 John Thomas, minister
 Bible school, 10 a.m.; communion and preaching, 11 a.m.; evening worship, 7:30 o'clock.
 Bible study and prayer session, Wednesday, 7:30 p.m.
 Adults' choir practice, Wednesday, 8:30 p.m.
 We invite everyone to attend these services.

METHODIST (Chambers)
 Rev. L. R. Hansberry, pastor
 Sunday-school, 10:30 a.m.; Clair Grimes, superintendent; worship, 11:30 a.m.
 The Women's society will meet today (Thursday) at the home of Mrs. R. K. Platt.



Oldsmobile . . . '54 model is full year ahead.

FIRST PRESBYTERIAN (O'Neill)
 Rev. Samuel Lee, pastor
 Miss Helen May, assistant to the pastor

Sunday-school, 9:45 a.m.; nursery class, 11 a.m.; worship, 11 a.m.
 The junior high Westminster fellowship will meet Sunday at 5 p.m.
 Spiritual life group meets on Monday at 2 p.m., in the pastor's study.
 The college-age Westminster fellowship will meet Wednesday, February 10, at 7 p.m. The lesson will be led by Priscilla Holsclaw.
 The senior high fellowship will meet Thursday from 6 to 8 p.m.
 The church choir will practice Saturday morning at 10 o'clock. The children's story hour begins at 10:45 a.m.
 The Women's association will meet today (Thursday) at 2:30 p.m., at the church. Mrs. D. E. Nelson will present the lesson.
 A meeting of the teachers and officers of the Sunday-school is called for Monday evening, February 8, in the pastor's study.

WESLEYAN METHODIST (O'Neill)
 Rev. Melvin Grosenbach, pastor
 Thursday, February 4: Midweek prayer meeting, 8 p.m.
 Saturday, February 6: Prayer conference at Atkinson Wesleyan Methodist church. Services at 10:30 a.m. and 2 p.m. Basket dinner at the noon hour.
 Sunday, February 7: Sunday-school at 10 a.m.; worship at 11 a.m.; devotional period at 7:30 p.m.; adult Bible class in charge; the 8 o'clock service will be conducted by the Gideon camp of Holt county.
 We had capacity crowds at the 7 o'clock and 8 o'clock showings of the Billy Graham films Monday night.

YOUNG FOLKS HOME—PAGE
 Many young folks were home for the weekend.
 Carroll French and Lionell Jekes, students at the University of Nebraska, came last Thursday.
 Paul Robinson, Misses Byrdie Ann Parks and Jo Ann Braddock of Lincoln and Misses Ruth Parks and Lorna Stevens of Grand Island came Friday.
 Mr. and Mrs. Donald Summers and Misses Lorraine and Elaine Clasey and Marlene Kelly came Saturday. All these young folks are graduates of the Page high school.
 Loui Storm of Rapid City, S.D., has been a guest at the Tom Enright home.

Half-District Missionary Rally at Church Here—

On the afternoon of Sunday, February 14, beginning at 2:30 o'clock, at the Methodist church here in O'Neill, a missionary rally will be held. This was announced recently by the district superintendent of the northeast Nebraska district, Rev. J. L. Jay of O'Neill. The speaker is to be a returned missionary from China, Rev. Wesley M. Smith.
 Included in the rally will be a training session for those who are members of the official board commission on missions. This will be in addition to the messages of Rev. Wesley Smith. The meeting will close after the evening session.
 Expected to attend are Methodists, ministers and congregations, from the west half of the district which extends from Neligh to Wood Lake.

CHAMBERS NEWS
 Mr. and Mrs. Hale Osborne and Sharon of Winner, S.D., came Sunday and spent the day in the Wilbur Osborne home.
 Mr. and Mrs. Robert Turner and family of Grand Island spent the weekend with his parents, Mr. and Mrs. William Turner, and her brother-in-law and sister, Mr. and Mrs. Jack Christian-son.
 Mrs. Lee Taylor of Dubois.

Prompt Tankwagon Service
 Rural & City
PHILLIPS "66" PRODUCTS
 New & Used Tires
 Greasing & Washing
BORG & WORTH
 Phillips "66" Station
 Phone 362

'Rocket' Engine Bigger than Ever

The Oldsmobile for 1954, to be on display at the O'Neill auto show this week, will be one full year ahead of schedule.
 The new 1954 Oldsmobile models originally were planned for release in 1953, according to Lew White, manager of the Lew White Motor Co., of O'Neill.
 "But original plans were scrapped early in 1953 when it was found possible to move the 1955 model up to 1954. The result of this skip-a-year program is the most completely new, completely changed, completely advanced Oldsmobile in many years."
 The new models, "88" Super "88" and "98", are a full three inches lower than their predecessors without sacrificing ground clearance. They feature such sweeping changes as an all new body by Fisher, a new wide, wrap-around, panoramic windshield, new sweep-cut fender and door design and many other styling innovations.
 The new "Rocket" engine is bigger—in horsepower—from 165 to 185 in the Super "88" and "98" models, (170 in the "88" models) and up in compression ratio from 8 to 1 to 8.25 to 1. Engine displacement is increased from 303 to 324 cu. in., and the entire car is engineered so that the increased power is useable power—power that the driver can put to use in the medium

and low speed ranges—in ordinary, every day situations.
 Many of the new styling features were inspired by the General Motors experimental dream cars, particularly the Oldsmobile Starfire. All models in the "88" and Super "88" series are not only three inches lower, but are two inches longer, and this, of course, gives the cars the new long, low-level silhouette, Mr. White explained.

ANNOUNCING the breath-taking new Oldsmobile Super "88" for 1954! The Oldsmobile so ultra-new in design . . . so original in style throughout . . . there's never been a car like it before! Just wait till you see its completely new Body by Fisher—that new lower, longer, lovelier silhouette! The daring new slant of its panoramic windshield! The dramatic new flair in its sweep-cut doors and fenders! And just wait till you drive the new 185-horsepower World's Record "Rocket" Engine with 8.25 to 1 compression ratio—the engine that outperforms, out-economizes even the power-famous '53 "Rocket". For a completely new view on modern automobiles, see the thrilling new Super "88" . . . on display now! And watch for Oldsmobile's new "Dream Car", the Classic Ninety-Eight . . . coming to your dealer's soon!

Wyo., was a guest of her cousins, Mr. and Mrs. William Turner, Saturday night and Sunday.
 Mr. and Mrs. Clarence Young and boys drove to Magnet Sunday to visit his brother, Chris Young, and family.
 Sunday dinner guests in the Osburne home were Mr. and Mrs. Tom Osborne of Winner, Mr. and Mrs. Hale Osborne and Sharon of Winner, S.D., Mr. and Mrs. Eugene Baker, Mrs. Victoria Wood and Mrs. Hattie Tibbets of Chambers.
 Mr. and Mrs. L. V. Cooper entertained Mr. and Mrs. Hale Osborne of Winner, S.D., Mrs. Hattie Tibbets and Mrs. Genevieve

Bell of Chambers at lunch Sunday evening.
 Sunday dinner guests in the Herman Cook home were Mr. and Mrs. Tom Englehaupt and Mrs. John Wintermote.
 Mr. and Mrs. E. H. Medcalf and Mrs. Anna Albers were Sunday evening visitors in the Asa Hubbard home.

DR. DONALD E. DAVID
 OPTOMETRIST
 Eyes Examined
 Glasses Fitted
 Phone 2101, Spencer, Nebr.

Be Wise
 BUY AN **OK** USED CAR
 Your dollar will go farther on these select trade-ins. Won't you come in and see for yourself?

- 1947 Chevrolet 2-door Deluxe with heater. Clean as a pin inside and out. 495.00
 - 1948 Chevrolet 2-door, radio, heater, sun visor. You just won't find nicer for our low price of 645.00
 - 1951 Pontiac 4-door Chieftain Eight, radio, heater, hydraulic, 25,000 miles. 1,195.00
 - 1950 Chevrolet 2-door. Has a heater, beautiful black finish and is a local one-owner car. 895.00
 - 1949 Chevrolet with the needed accessories. Priced for a quick sale. 735.00
 - 1950 Dodge 2-door. Complete with radio and heater. You'll save money. 735.00
 - 1953 Chevrolet Deluxe 4-door, radio, heater, tinted glass, 2-tone green, less than 8,000 miles and way below new cost. 1,845.00
 - 1953 Chevrolet 4-door, radio, heater, Powerglide, power steering. Was our demonstrator. 1,965.00
 - 1953 Oldsmobile 98, 4-door, demonstrator, loaded with extras. Save \$\$\$
 - 1949 Chevrolet pickup. Runs and looks good. A bargain at 675.00
 - 1950 Ford 1/2-Ton stake. A clean, low mileage, town pickup. Only 715.00
 - 1953 Chevrolet 3/4-ton cab and chassis. New. You save hundreds at 1,400.00
 - 1940 Chevrolet 1 1/2-ton truck with comb. rack and good tires. Needs motor. 150.00
 - 1940 Chevrolet 2-door and 5-pass. cpe. Really nice, with good tires, body, and paint on both. Your choice. 175.00
- LOW COST GMAC PAYMENT PLAN
LEW WHITE MOTOR CO.
 "THE SHOWPLACE OF QUALITY AUTOMOBILES"
 CHEVROLET — OLDSMOBILE — CADILLAC
 Phone 100 O'Neill

DeKALB POULTRY FILM
 DeKalb Will Show a Poultry Film
 American Legion Auditorium — O'Neill
Wednesday, Feb. 10 — 8 P.M.
 FILM PORTRAYING poultry management followed by a discussion on feed management will be open to all interested in poultry raising, \$35 in prizes will be given. Free coffee will be served.
 For Further Information Contact—
BOB STRONG

CHURCH OF CHRIST (O'Neill)
 Corner of Sixth and Grant
 John Thomas, minister
 Bible school, 10 a.m.; communion and preaching, 11 a.m.; evening worship, 7:30 o'clock.
 Bible study and prayer session, Wednesday, 7:30 p.m.
 Adults' choir practice, Wednesday, 8:30 p.m.
 We invite everyone to attend these services.

FREE! DOUBLE HEADER!
 Family party and new equipment show

You are cordially invited to be our guests at our new IH Family Party and New Equipment Show. It's new! It's different! It's exciting! You'll laugh your sides off and thrill to the antics of professional actors. You'll see the latest in farm equipment that makes your work faster and easier. Be sure to come and bring the whole family.

Fun for Everyone!
Tuesday, Feb. 9th
 Starting at 2 P.M.
 ★ ★ ★
American Legion Auditorium
 — O'NEILL —
 ★ ★ ★
 Jimmy Lee: "Hats Off to Fun"; Gladys Oliver: "A musical treat that can't be beat"; Fred Ketch: "The Ole Cowhand and His Pal"; Marilyn Foster: "Scintillating Star of Skates"; Bill Harris: "Noble of Novelty"; Bob Sieberg: "Musical Master of Note."

See the Nationally Famous Fast-Hitch Tractor Square Dance

You'll see the nationally famous Fast-Hitch tractor square dance and a big parade of machines in full-color movies. Don't miss this never-to-be-forgotten thrill.

See the newest in IH farm equipment

Come Early! All Seats Are Free!
Shelhamer OIL & EQUIP. CO.
 "Your International Harvester Dealer."
 Phone 570 O'Neill

New On Display at the O'Neill Auto Show

the **Ultra - New for '54**

OLDSMOBILE

World's Record "Rocket"
OLDSMOBILE
LEW WHITE MOTOR CO.

Car illustrated: 1954 Super "88" Holiday Coupé, White Sideval Tires, optional at extra cost. A General Motors Value.