

Church Notices

FIRST PRESBYTERIAN (O'Neill)
 Rev. J. Olen Kennell, pastor
 Sunday, February 27: Sunday-school, 10 a.m.; worship service, 11 a.m.; mariners fellowship for all young married couples at the manse, 7:30 p.m.
 Monday, February 28: Spiritual life group meeting, 2 p.m.; session meeting in the study, 8 p.m.
 Wednesday, March 2: Westminster youth fellowship, 7 p.m.; trustees' meeting in the study, 7:30 p.m.; choir practice, 8 p.m.
 Thursday, March 3: Membership class meeting in the pastor's study, 7 p.m.; Lenten service, 8 p.m.

ASSEMBLY OF GOD (O'Neill)
 Rev. Wayne A. Hall, pastor
 Sunday, February 27: Sunday-school, 10 a.m.; worship, 11 a.m.; Sunday-school teachers' and officers' conference, 2 p.m.; boys' and girls' story hour, 7:30 p.m.; evening rally, 8 o'clock.
 Tuesday, March 1: Young people's meeting at 8 p.m.
 Wednesday, March 2: Bible study and prayer meeting at 8 p.m.
 We welcome any who desire to worship with us. Your attendance at church is an American liberty for all.

WESLEYAN METHODIST (O'Neill)
 Rev. Duane Lauber, supply pastor
 Sunday, February 27: Sunday-school, 10 a.m.; Carl Colfack, superintendent; worship, 11 a.m.; youth meeting, 7:30 p.m.; evening service, 8 o'clock.
 Prayer meeting, 7:30 p.m., on Thursday.
 The public is invited to all services.

METHODIST (Chambers)
 Rev. J. M. Hodgkin, pastor
 Sunday, February 27: Sunday-school, 10 a.m.; Eugene Baker, superintendent; worship, 11 a.m.

FARM BUILDINGS COST LESS
 When You Use Adaptable Butler Buildings



★ FOR GRAIN STORAGE



★ FOR IMPLEMENT SHELTER & TOOL SHOP



★ FOR CATTLE SHED

Save on farm building costs with Butler Steel Buildings. Permanent. Weather-tight. Rodent-proof. Fire-resistant. Widths: 20', 24', 28', 32', 36', 40', 50', 60', 70' and wider; lengths variable. Inquire today.

BUTLER Steel Buildings
 Straight Sidewalls — Use All the Space You Pay For

Sold and Recommended by
Farmer's Lbr. & Supply Co.
 BASSETT, NEBR.
 Phone 333

CHRIST LUTHERAN (O'Neill)
 5th and Clay Sts.
 Rev. E. G. Smith, pastor
 "The church of the Lutheran Hour."
 Thursday, February 24: Ladies Aid meets, 2 p.m.; Bible study group, 8 p.m. The group is studying and discussing the Gospel according to St. Luke. Everyone is cordially invited to attend.
 Saturday, February 26: Confirmation class, 1:30 p.m.
 Sunday, February 27: Worship, 9:30 a.m.; Sunday-school, 10:30 a.m.
 Wednesday, March 2: Lenten service, 8 p.m. We invite everyone to attend these special mid-week services to hear the story of God's love for us as shown in Jesus Christ.

METHODIST (Page-Inman)
 Rev. Lisle E. Mewmaw, pastor
 Thursday, February 24: Inman WSCS executive meeting at 1:30 p.m., followed by society's quarterly birthday meeting at 2:30 p.m.
 Sunday, February 27: Inman worship service at 9:45 a.m.; church school at 10:45 a.m.; Page church school at 11 a.m.; MYF at 7:30 p.m.
 Tuesday, March 1: Page King's Daughters' family night meeting at 8 o'clock.
 Wednesday, March 2: Inman choir practice and MYF at 7:30 p.m.; commission on education meeting at 8 p.m.
 Thursday, March 3: Page WSCS meeting.

ST. PAUL'S LUTHERAN (Chambers)
 Rev. Howard E. Claycombe, pastor
 Thursday, February 24: Senior Walther league, 8 p.m.
 Friday, February 25: Finance and stewardship meeting, 8 p.m.
 Saturday, February 26: Confirmation class, 10 a.m.
 Sunday, February 27: Sunday-school and adult Bible class, 10 a.m.; divine worship, 11 a.m.
 Monday, February 28: Sunday-school training, 7:30 p.m.
 Tuesday, March 1: Adult class, 8 p.m.
 Wednesday, March 2: Lenten services, 8 p.m.

METHODIST (O'Neill)
 Rev. W. B. Smith, pastor
 Thursday, February 24: WSCS prayer cell with Mrs. J. L. Jay, 10 a.m.
 Friday, February 25: Dorcas society, 2 p.m.
 Sunday, February 27: Junior choir practice, 9:30 a.m.; church school classes, 9:45 a.m.; worship, 11 a.m.; MYF cabinet, 1:30 p.m.
 Monday, February 28: Finance commission, 7 p.m.; worship commission, 8 p.m.
 Tuesday, March 1: Worship commission, 7 p.m.; adult fellowship, 8 p.m.
 Wednesday, March 2: Choir practice, 7 p.m.; MYF, 8 p.m.

COMMUNITY (Stuart)
 Rev. D. D. Su, pastor
 Sunday, February 27: Sunday-school, 10 a.m.; worship service, 11 a.m.; church conference at the church, 2 to 5 p.m.
 Intermediate youth fellowship each Wednesday, 7 p.m.
 This afternoon (Thursday) the Women's society will meet at 2 o'clock. Cleveland Presbyterian ladies will join us in a world day of prayer service at this meeting.
 Senior youth fellowship tonight (Thursday), 7 o'clock, followed by choir practice at 8 p.m.

CHURCH OF CHRIST (O'Neill)
 Corner of Sixth and Grant
 Rev. John Thomas, minister
 Bible school, 10 a.m.; communion and preaching, 11 a.m.; youth fellowship hour, 6:30 p.m.; evening worship at 7:30 o'clock.
 Bible study and prayer session Wednesday, 7:30 p.m.
 In the name of Jesus Christ we bid you a sincere welcome to these services.

CENTER UNION (O'Neill)
 Rev. C. P. Turner, pastor
 Sunday, February 27: Sunday-school, 10 a.m.; preaching service, 11 a.m.; young people's meeting, 7:30 p.m.; preaching service following at 8 o'clock.
 Midweek prayer meeting and Bible study will be in the home of Mr. and Mrs. Otto Lorenz, Wednesday, March 2, at 8 p.m.

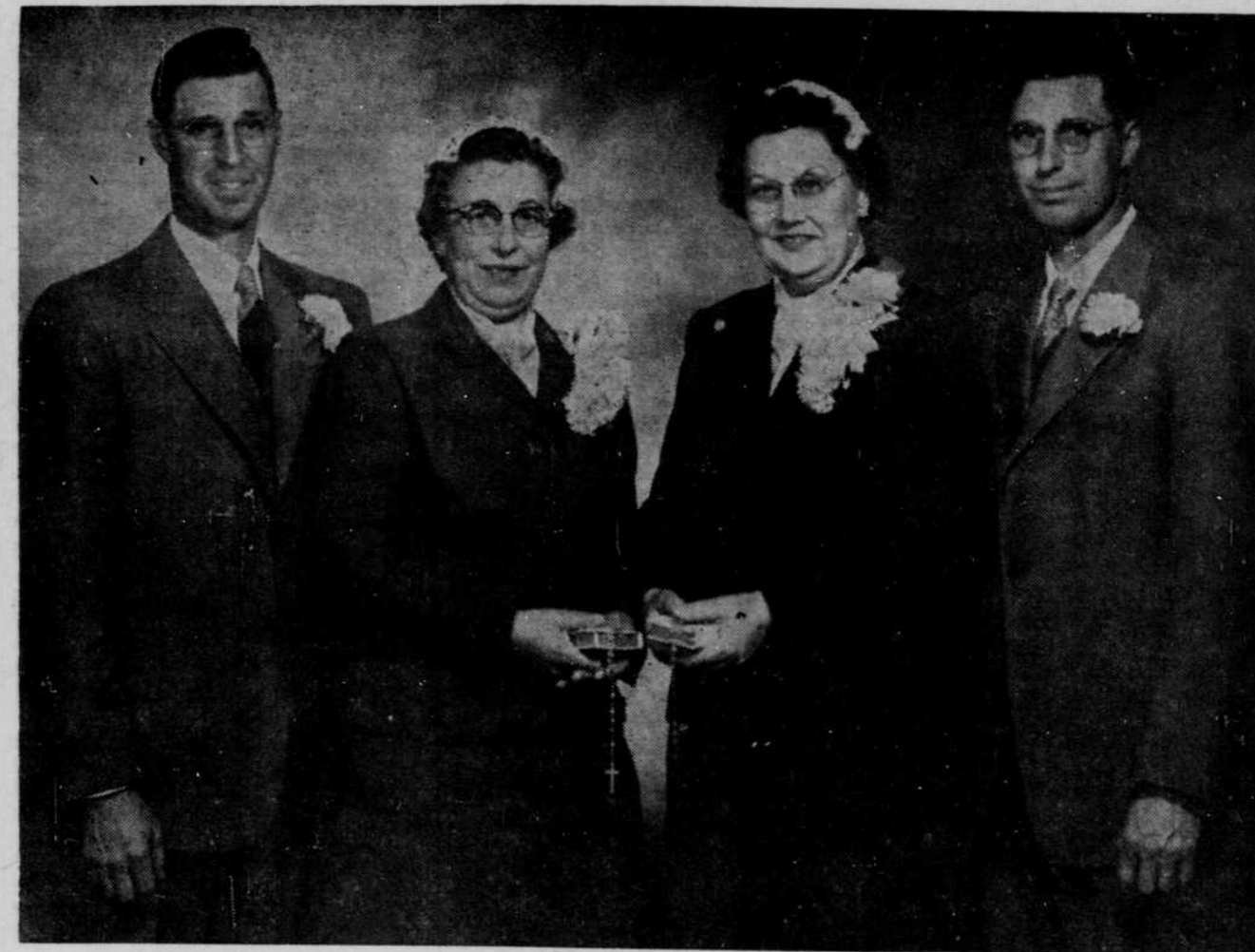
METHODIST (Emmet)
 Rev. W. B. Smith, pastor
 Sunday, February 27: Worship, 9:30 a.m.; adult-youth church school, 10:30 a.m.
 Thursday and Friday, March 3, 4: Conference WSCS meeting at Hastings.

BETHANY PRESBYTERIAN (RFD, Ewing)
 Rev. J. Olen Kennell, pastor
 Sunday, February 27: Worship service, 9:30 a.m.; Sunday-school, 10:30 a.m.
 Wednesday, March 2: Women's society meeting, 2 p.m.

Livestock Feeding Is Made Difficult

CELIA—The worst storm of the season hit this community over the weekend, beginning Friday afternoon with snow, strong winds and zero weather. Snow was very fine, but by Sunday evening when the snow let up huge drifts had been piled in many places.
 Feeding of livestock was a difficult task. Hay racks instead of underslung could do the job better as well as get around easier.

Other Celia News
 Mr. and Mrs. Ed Bausch and father, Steve Bausch, were Sunday evening, February 13, visitors at the Earl Schlotfeld home.
 Mr. and Mrs. Lawrence Smith, Mr. and Mrs. Joe Hendricks and Alex Frickel attended the grass-land meeting in Stuart Monday, February 14. An estimated 500 persons attended the meeting.
 A card party was held at the Emil Colfack home Friday evening. Those attending were Mr. and Mrs. Charles Dobias and sons, Mr. and Mrs. William Maloun and and Mr. and Mrs. Duane



In Double Wedding at Atkinson

Mr. and Mrs. Melvin Meals and Mr. and Mrs. Marvin Meals (above) were married at St. Joseph's Catholic church in Atkinson Monday, February 14. Mrs. Melvin Meals is the former Della Van Fleet and Mrs. Marvin Meals is the former Viola Van Fleet, daughters of the late Mr. and Mrs. Fred Van Fleet. The bridegrooms are twin sons of Mr. and Mrs. George Meals of Atkinson. —O'Neill Photo Co.

Beck.
 Mr. and Mrs. Earl Schlotfeld were Monday, February 14, dinner guests at the Stanley Johnson home.
 Mr. and Mrs. Ray Elder were

Tuesday afternoon, February 15, visitors at the Joe Hendricks home.
 Dorothy Scott and Mrs. William Maloun were Tuesday, February 15, dinner guests at the D. F. Scott

home.
 Clarence Focken and sons, Darrel and Dale, were Butte visitors Wednesday, February 16.
 Millie Ernst held a party at the Mark Hendricks home Tuesday

evening, February 15. Twenty-four adults and 17 children were present.
 Mr. and Mrs. Perry Terwilliger and sons, also Charlie Ballon and Ed Disterhaupt, went to Omaha Tuesday, February 15, returning last Thursday night.
 Mr. and Mrs. Joe Hendricks were Wednesday, February 16, dinner guests at the O. A. Hammerberg home.
 Emil Colfack accompanied Mr. and Mrs. Charles Dobias to Butte Wednesday, February 16.
 Leola Jane Weichman, 18, of Stuart, February 18.
 Leo Edward Sobotka, 20, of Inman and Lucille Beatrice Jauernig, 22, of O'Neill, February 18.
 Donald Godel, 22, of O'Neill and Phyllis Harmon, 20, of O'Neill, February 18.
 Phone us your news!

Money to Loan
 — on —
 AUTOMOBILES
 TRUCKS
 TRACTORS
 EQUIPMENT
 FURNITURE
Central Finance Corp.
 C. E. Jones, Manager
 O'Neill, Nebraska

Run Depends Upon Weather, Roads
 • The managers of the O'Neill market estimate at least 250 cattle for today's sale—but the size of the run will be determined largely by weather and road conditions. There were no large consignments listed until Wednesday morning, but several good small consignments of pretty good cattle.
 • Hog sale will start at 1 o'clock.
O'Neill Livestock Market
 Phone 2, O'Neill

BUDGET SAVER SALE!

WE RESERVE THE RIGHT TO LIMIT QUANTITIES

Prices for Feb. 25th & 26th

BLUE LABEL KARO 1/2 LB. BOTTLE 19¢	BOOTH'S FROZEN FISH PERCH FILLETS 1-LB. PKG. 33¢ HADDOCK FILLETS 1-LB. PKG. 39¢ HALIBUT STEAKS 14-OZ. PKG. 53¢
Suprb GRAPEFRUIT HEARTS No. 303 CANS 2 FOR 35¢	"GENUINE HICKORY SMOKED" Sliced Bacon RATH'S MULBERRY BRAND WONDERFUL FLAVOR 1-LB. PKG. 29¢
MORNING LIGHT CREAM or WHOLE KERNEL GOLDEN CORN No. 303 CAN 10¢	U. S. GRADED "GOOD" BEEF CHUCK ROASTS ... LB. 39¢ and 49¢
EATWELL GRATED TUNA No. 1/2 CAN 19¢	BEEF TO BOIL POUND 10¢ PORK LIVER Sliced. POUND 10¢
Chase & Sanborn COFFEE Per Lb. 85¢	100% PURE FRESH MADE Ground BEEF LB. 33¢
COMBINATION COOKY SALE BUY 1-LB. FROSTED TANGO COOKIES... 39¢ and you get 1-LB. CRYSTAL GEMS FOR ONLY 10¢ YOU GET 1-LB. OF EACH (2-LBS.) FOR 49¢	ARMOUR'S STAR BRAUNSCHWEIGER , lb. 39¢ SPICED LUNCH LOAF, lb. 49¢
GOLD MEDAL FLOUR 5-lb. bag... 51¢ 10-lb. bag... 99¢ 25-lb. bag... \$2.25 50-lb. bag... \$4.49	Frozen Foods FLAV-R-PAC GREEN PEAS 10-oz. Pkg. 17¢ FLAV-R-PAC STRAWBERRIES 12-oz. Pkg. 29¢
NORTHERN TISSUE WHITE OR PASTEL COLORS 6 ROLLS 49¢	CARROTS FRESH, CRISP, TENDER. LARGE CELLO BAG 5¢
MR. BUDGET SAVER	FANCY GOLDEN-RIPE BANANAS 2 lbs. 29¢ SUNKIST NAVAL ORANGES Large Size, Dozen 35¢

Suprb thick, rich

CATSUP 15¢

NO FINER CATSUP SOLD AT ANY PRICE! 14-oz. bottle

Dairy Cattle Sale

EIGHTY HEAD
 Wisconsin and Minnesota
 Holstein — Guernsey — Brown Swiss
AT AUCTION
 Thursday, March 3rd
 Starting at 12:30 P.M.
 At the ARNOLD THIELE FARM located 2 1/2 miles southwest of Clearwater

- Featured in this sale are 36 head of baby calves; 20 first and second calf heifers fresh by sale day, and 20 heavy springers. Many of these are officially calfood vaccinated. Certificates are available.
- As a special attraction, they have four of the finest 9-months-old Brown-Swiss that are officially calfood vaccinated and are TB and Bang's free. These cattle were personally selected by ARNOLD THIELE direct from the Wisconsin and Minnesota farms. Positively no stockyard or sale barn cattle. Dairy cattle are on hand at all times.

ARNOLD THIELE FARM
 FREE: Heifer calf to be given.
 AUCTIONEERS: Brian, Conyers, Hopkins