

(Cont. from preceding page)  
**Breeding Classes—**  
**(Cow and Calf)**  
 (Only cow and calf projects may compete.)  
 5. Angus cow and calf under 1 year — Blue, Red, White  
 6. Shorthorn cow and calf under 1 year — Blue, Red, White  
 7. Hereford cow and calf under 1 year — Blue, Red, White  
 Blue, \$5; red, \$4; white, \$3. All others \$1.  
**Fat Calves Class**  
 8. Angus heifers — Blue, Red, White  
 9. Shorthorn heifers — Blue, Red, White  
 10. Hereford heifers — Blue, Red, White  
 11. Angus steers — Blue, Red, White  
 12. Shorthorn steers — Blue, Red, White  
 13. Hereford steers — Blue, Red, White  
 Blue, \$5; red, \$4; white, \$3. Purple group to be selected. Non-ribbon winners, \$1.  
**Stocker-Feeder Steers & Heifers**  
 14. Angus heifers — Blue, Red, White  
 15. Shorthorn heifers — Blue, Red, White  
 16. Hereford heifers — Blue, Red, White

17. Angus steers — Blue, Red, White  
 18. Shorthorn steers — Blue, Red, White  
 19. Hereford steers — Blue, Red, White  
 Blue ribbon award, \$4; red ribbon, \$3; white ribbon, \$2. Purple ribbon group to be selected. All non-ribbon calves, \$1.  
**Club Group of Three**  
**Beef and Dairy**  
 20. Any club may select three animals to show as a group. All three must belong in the same class, such as baby beef, stocker-feeder, etc. All beef groups compete together. All dairy groups compete together.  
 Blue, \$5; red, \$4; white, \$3.  
**4-H Dairy Cattle**  
 Each breed will have all divisions. Awards will be the same for each division. A purple award group within dairy will be selected if show warrants. Co-Op special award first three in each class.  
 21. Jr. division calves born after July 1, 1953, and before March 1, 1954.  
 25. Dairy heifers, born before July 1, 1953, not over 2 yrs.  
 23. Dairy heifers over 2 yrs.  
 24. Dairy cows in production. Blue, \$5; red, \$4; white, \$3.  
**Club Group of 3**  
 25. Club group of three dairy animals. Any club may select three animals from one class and show as a group.

**Agriculture & Home Economics**  
 Only members of 4-H clubs are eligible to exhibit in the following classes. A member must exhibit in the project he or she is carrying, and the article must have been completed since the last fair. Members are urged to make entries early with Mrs. Glead. Entries may be made up until 3 p.m., Tuesday.

**Let's Sew**  
 May choose any 3 B R W  
 Head kerchief or neckscarf .35 .25 .10  
 Shoulder cover .35 .25 .10  
 Dust cloth .35 .25 .10  
 Pot holder .35 .25 .10  
 Pincushion .35 .25 .10  
 Mittens .35 .25 .10

**Learning to Sew**  
 May choose any 3 B R W  
 Kitchen hand towel .35 .25 .10  
 Kitchen apron .35 .25 .10  
 Holder .35 .25 .10  
 Shoulder cover .35 .25 .10  
 Laundry bag .35 .25 .10

**Lounging and Sleeping Clothes**  
 May exhibit 1 outfit only B R W  
 Lounging clothes and accessories 1.50 \$1 .75  
 Sleeping clothes and accessories 1.50 \$1 .75

**Work and Play Clothes**  
 Exhibit only 1 outfit B R W  
 Work clothes and accessories 1.50 \$1 .75  
 Play clothes and accessories 1.50 \$1 .75

**School Clothes**  
 Exhibit only 1 outfit B R W  
 School outfit and accessories 1.50 \$1 .75

**Advanced Unit**  
 One in each project B R W  
 Dress up clothes and accessories 1.50 \$1 .75  
 Simple tailored clothes and access. 1.50 \$1 .75  
 New clothes from old and accessories 1.50 \$1 .75

**Let's Help Mom and Dad**  
 Choose any 2 B R W  
 Decorated tray .35 .25 .10  
 Bulletin board .35 .25 .10  
 Collection of pictures of pets .35 .25 .10  
 Dust cloth holder .35 .25 .10

**Learning to Be a Homemaker**  
 Choose any 3 B R W  
 (Cont. on following page)

**LOT 4 — HOGS**  
 Four - H members carrying market hogs or sow and litter projects are eligible to shown in this lot. An animal can be shown only in one class in 4-H division.  
 26. Market hog—fat barrow or gilt.  
 Blue, \$3; red, \$2; white, \$1; all others 50c.  
 27. Market litter—6 or more gilts and barrows.  
 Blue, \$10; red, \$7.50; white, \$5; all others, \$1.  
 28. Purebred litter—6 or more boars and gilts.  
 Blue, \$10; red, \$7.50; white, \$5; all others, \$1.  
 29. Purebred gilt born after January 1, 1954.  
 Blue, \$3; red, \$2; white, \$1; all others, 50c.  
 30. Purebred boar born after January 1, 1954.  
 Blue, \$3; red, \$2; white, \$1; all others, 50c.  
 All classes of hogs to be shown by breeds with purple awards if show warrants, all breeds competing together in each class for purple award.

**LOT 5 — SHEEP**  
 Only 4-H club members carrying sheep projects may compete.  
 31. Fat lambs. Blue, Red, White  
 32. Breeding ewe lambs — Blue, Red, White  
 33. Bucks over 1 year — Blue, \$3; red, \$2; white, \$1. All others, 50c. Purple award if show warrants.  
**LOT 6 — SADDLE STOCK**  
 34. Yearling colts, 1 year and under.  
 35. One to two years of age.  
 36. Over two years of age.  
 Blue, \$5; red, \$4; white, \$3. All others, \$1. Purple award if show warrants.

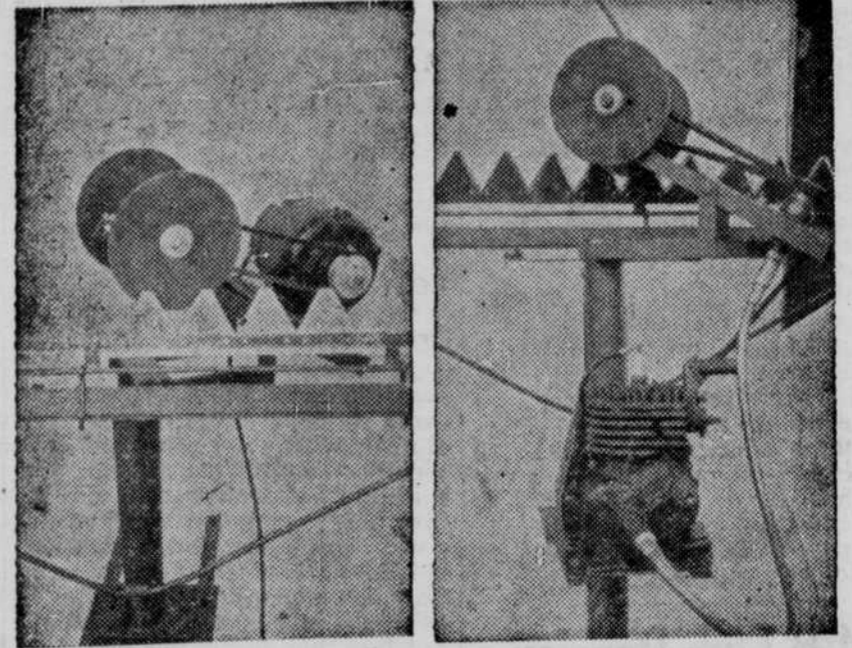
**Many Attractions on Fair's Midway**

The midway on the Holt county fair grounds at Chambers will be jam-packed with entertainment attractions—as customary. There will be a ferris wheel, kiddie rides of all kinds, refreshment stands, popcorn stands, and novelty stands.  
 The Holt fair board prides itself in keeping the "midway clean"—and that's exactly what parents can expect when they bring along their children.  
 "A clean, wholesome midway is a vital part of the fair," says Lloyd Glead of Chambers, president of the Holt County Agricultural society, the organization that sponsors the event.

**HAY PRODUCERS ATTENTION!**

IF YOU WANT to sharpen your sickles in the hay field, saving costly time and trips to town, here is the hay grinder that'll do the job and pay for itself in a jiffy. It's the B&N Sickle Grinder!

NO VIBRATION, driven with a flexible shaft, very fast and efficient.



We stock these models (illustrated above). The new, improved electric model (at left) has an automatic set to gauge adjustments for various sickles.

Call and See Them

We Gladly Demonstrate for You

**B&N Sickle Grinder Co.**

Phone 49

Ewing, Nebr.

**BIG! DELUXE! New Colors!**

**Cyclamatic Frigidaire**

Here's the biggest refrigerator value in years! 8.4 cu. ft. storage space with completely separate food freezer and all these features:

- Refrigerator Defrosts itself
- Roll-to-You Shelf
- Full-Width Hydrator
- Butter and Cheese Compartments
- Egg Server
- Golden-trimmed color interior
- All-aluminum Shelves
- Right or left-opening Door
- 5 Year Protection Plan

Choice of white, pastel yellow or green exterior in Dulux or Porcelain Finish!

**W. D. RENINGER**  
 Chambers, Nebr.



The milk that's loved  
 By young and old  
 Is mighty good—  
 It's Meadow Gold!

**Meadow Gold HOMOGENIZED GRADE A Milk**  
 Beatrice Foods Co.

Phone 464-W  
 O'Neill

