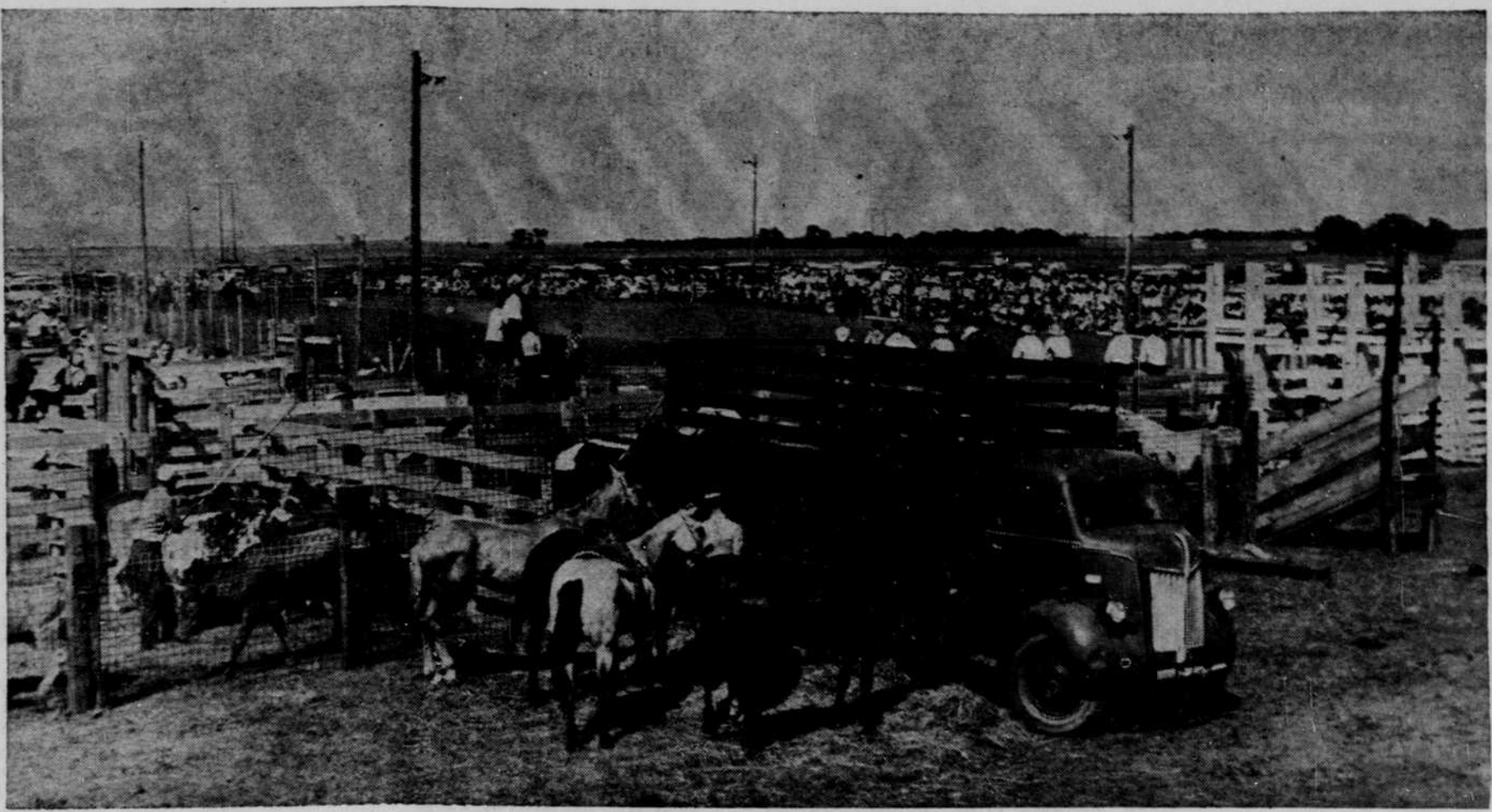


BETHANY PRESBYTERIAN

(RFD, Ewing)
Rev. Samuel Lee, pastor
Miss Helen May, assistant to the pastor
Morning worship each Sunday at 9:30 o'clock. Sunday school follows immediately upon the church service.
The monthly family night of the church was held Sunday night, and a large number of people enjoyed the potluck supper and the evening program. A singfest preceded the showing of the color movie film, "The Church of the Empty Cross." The film presented

the work of our church among the Spanish-speaking people of the Southwest.
Next week, five of our young people will attend the Presbyterian junior high camp at the Y. M. C. A. camp grounds at Columbus. Reverend Lee will be directing the camp and Mrs. Lee and Helen May will be serving as faculty members and counselors. Those attending from our church will be Danny LaRue, Lanny LaRue, Jerold Harkins, Karen Kruse and Roberta Klaben. They will leave for camp Sunday afternoon and return on Saturday.

Helen May has been away on vacation but will return this weekend.
The sacraments of the church will be observed at the morning service on June 27th. This will be the pastor's last Sunday in the pulpit.
METHODIST (Emmet)
Rev. Wallace B. Smith, pastor
Attend the church of your choice every Sunday. It will help you as well as the church.
Today (Thursday): WSCS meets with Mrs. Florence Abart, 2 p.m.

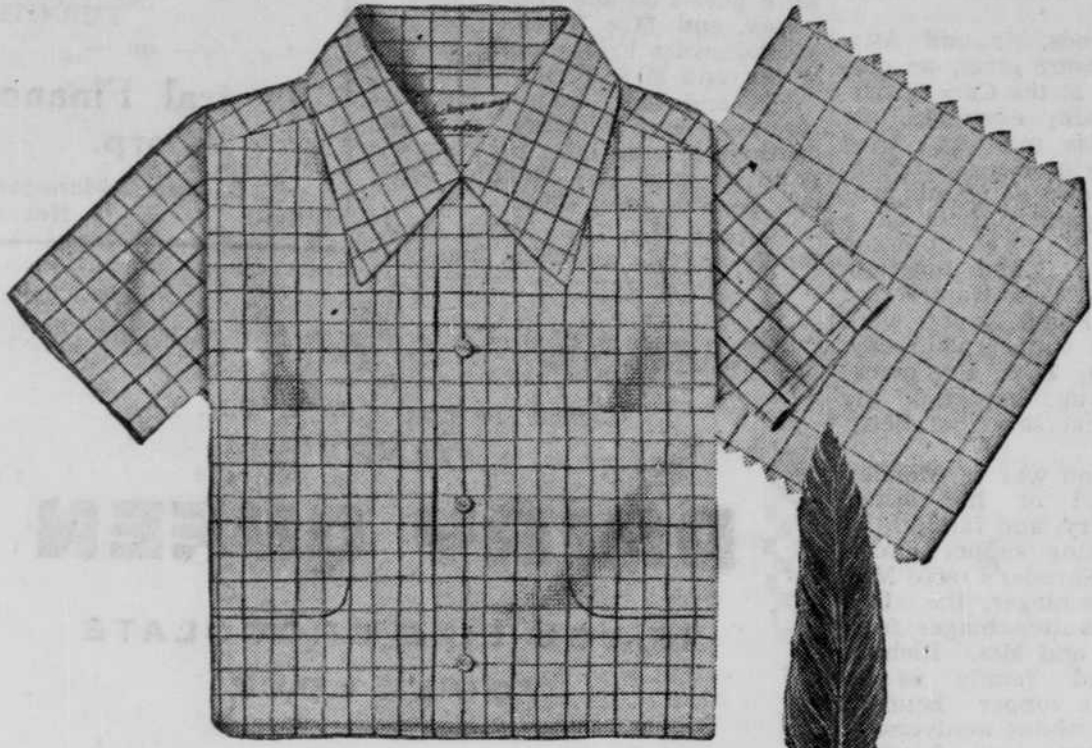


This is a panoramic view of the O'Neill Saddle club's arena, located at the east outskirts of the city, taken during Sunday afternoon's rodeo. The two-day show opened Saturday. A portion of the vast crowd is shown by the camera.—The Frontier Photo.

are invited to bring vegetables, milk, eggs, cream, lard and meat as you can.
Rev. Melvin Grosenbach will be in charge of the O'Neill Drive-In church service Sunday.

THE NEW SENSATIONAL
SUC
ROCKET CYLINDER WATCH CRYSTAL
EXPERTLY FITTED FOR YOU BY US!
Unconditionally GUARANTEED TO YOU BY US!
FOR ONE YEAR AGAINST
• Fading Out
• Breaking
• Leaking Dust
• Chipping
• Discoloring
QUICK, RELIABLE SERVICE ON ALL WATCH REPAIRS
McIntosh Jewelry

Father's Day is Sunday, June 20!!



FEATHER CHEK

a **Jockey** feature Sportshirt from the house of *Coopers*

You'll enjoy the so-light-you-don't-feel-it sensation of wearing this Feather Chek Jockey Feature sportshirt. Millions of tiny openings let the breezes through—you're cool and comfortable on the hottest day.
Fine check pattern in three-color combination. Tubfast cotton.
Come in today and get the shirt you'll want to wear all of the time. **\$3.45**

Petersen's Clothing
High Quality, Guaranteed Merchandise

Church Notices

David Lee Chosen Assembly Delegate

David Lee, son of Rev. and Mrs. Samuel Lee of O'Neill, has been elected by the youth of Presbyterian as one of four delegates to the Westminster fellowship national assembly meeting at the University of Illinois June 30 to July 6. As a delegate, he will be one of the 1,200 young persons representing more than 500,000 youth of the Presbyterian church, U. S. A. These young people have invited over 500 adult teachers, ministers, business and professional and other lay leaders of the church to join them for a week of study and discussion of Christian living in a world of day-to-day crisis.
At Urbana, the Westminster fellowship assembly will be addressed by Dr. Charles T. Leiber, general secretary of the board of foreign missions, who has completed a recent tour to study new missionary strategy in a divided world; Prof. Alexander Miller of Stanford university; Dr. Eugene Carson Blake, stated clerk of the terian church, U. S. A.; Dr. Hayes general assembly of the Presbytery M. Fuhr, head of the conservatory of music, Hastings college; and Dr. Frances P. Miller, statesman from Virginia. Dr. Joseph Gettys of First Presbyterian church, Dallas, Tex., will guide the daily Bible study of the assembly.

ASSEMBLY OF GOD (O'Neill)

Rev. Wayne A. Hall, pastor
Today (Thursday) the Women's Missionary Council meets at the church at 2 p.m.
Saturday night at 8:30 o'clock there will be a street service at the corner of Fourth and Douglas.
Sunday services at the usual hours: Sunday school at 10 a.m.; worship at 11 a.m.; children's Bible hour at 7:30 p.m.; and evangelistic service at 8 p.m.
Monday through Friday, June 21 to 25, is boys' and girls' camp in Lexington. A goodly number of the boys and girls plan to attend.
Tuesday, June 22, at 8 p.m. the young people have their meeting.
Wednesday, June 23, at 8 a.m. is the Bible study and prayer service in the church.
Remember this announcement in advance. There will be a tent meeting in Baker's grove, south of Ainsworth, June 28 through July 5. All of the Assembly of God churches of the north section will sponsor the meeting. C. B. Roberts of St. Joseph, Mo., will be the evangelist.

FIRST PRESBYTERIAN (O'Neill)

Rev. Samuel Lee, pastor
Miss Helen May, assistant to the pastor
Sunday school, 9:45 a.m.; worship, 11 a.m.
There will be no nursery Sunday and 27.
The men's council dinner will be Monday evening, June 21, at 7 p.m. All men of the church are invited to attend.
There will be no meeting of the spiritual life group on June 21 because of the absence of the pastor, but there will be a meeting on the following Monday.
During the week of June 20 to 26, the pastor will be directing the junior high camp at Columbus. Mrs. Lee and Helen May will be serving as members of the camp faculty.
College age Westminster fellowship will meet on Wednesday, June 23, at the church.
The choir will practice on Thursday evening at 7:30 o'clock.

COMMUNITY (Stuart)

Rev. D. D. Su, pastor
Sunday, June 20: Bible study 10 a.m.; worship service, 11 a.m.
The Women's society will meet this afternoon (Thursday) at the church basement with Mrs. John Newman. Mrs. George Reidel and Mrs. Fred Zink as hostesses.
The Bible camp for intermediates at Cleveland opens on June 22 and closes June 27 on camp Sunday with Dr. George S. Bancroft of Omaha as guest speaker (Camp for high school young people will be June 28 through July 1).
There will be no services at this church on Camp Sunday.

CENTER UNION (O'Neill)

Rev. Melvin Grosenbach, pastor
Prayer meeting each Wednesday night at 8 o'clock.
Sunday, June 20: Worship at 10 a.m.; Sunday-school, 11 a.m.; young peoples' service and Bible study at 8 p.m.

METHODIST (O'Neill)

Rev. Wallace B. Smith, pastor
Today (Thursday): Prayer cell with Mrs. Claude Bates at 10:15 a.m.; Methodist youth fellowship meets at the church at 7:30 p.m., under the guidance of Friday, June 18: DVCS picnic at the park at noon; Dorcas circle with Mrs. C. G. Shelhase at 2 p.m.; house evening at the parents 7:30 p.m. This is also an open DVCS program at the church at and friends of the children of the

WESLEYAN METHODIST (O'Neill)

Rev. Melvin Grosenbach, pastor
Camp meeting dates are June 17-27. The first service will be tonight (Thursday) at 8 o'clock. Children's meetings will be held at 1 p.m., each day. Morning services will be conducted at 10:30 o'clock; afternoon services at 2 o'clock; evening evangelistic services at 8 o'clock.
Sunday services will be held in the school auditorium with Sunday-school at 10 a.m.; worship at 11 a.m.; Bible college service at 2 p.m.; singspiration at 7:30 p.m.; and evening evangelistic service at 8 o'clock.
You are urged to attend all of these services. Meals will be on the freewill offering plan. You

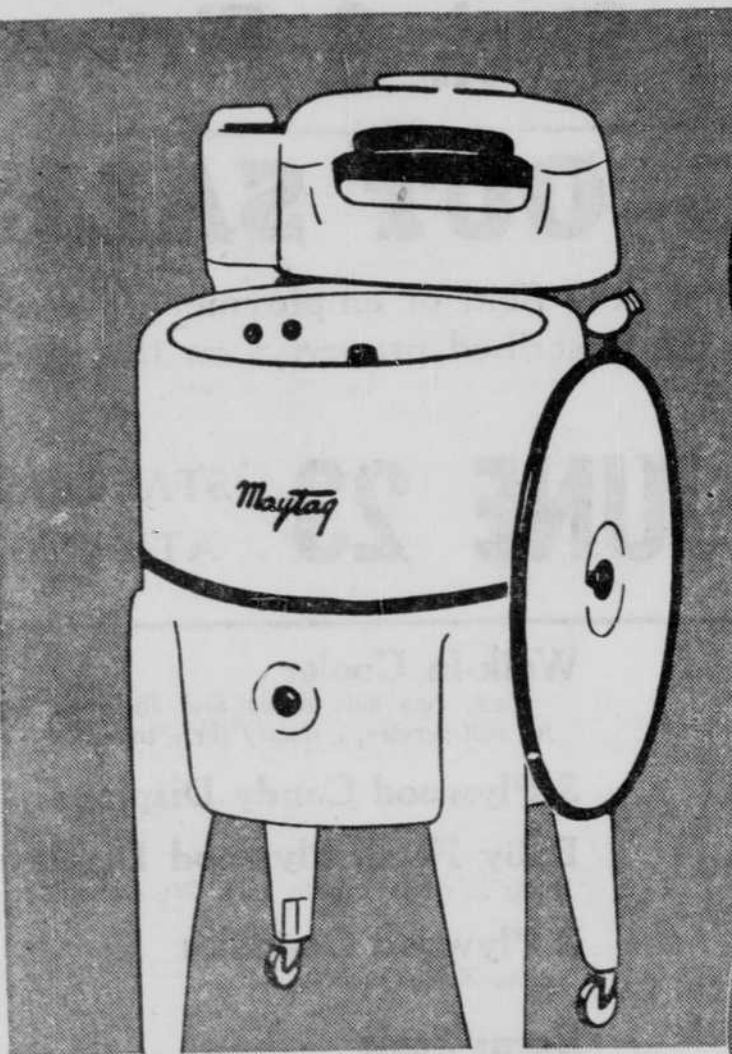
TIDE LARGE PKG. **25¢**
LIMIT 1 PKG. TO A CUSTOMER PLEASE.
ALL BRANDS OF CHOC. CHIPS **23¢**
FINEST PORK & BEANS **19¢**
Pillsbury or Robin Hood FLOUR **49¢**
SNO-WHITE MARSHMALLOWS **19¢**
SO GOOD IN THOSE COOL FRUIT SALADS.
1-LB. PKG.
COUNCIL OAK STORES
BLUE RIBBON OLEO **19¢**
TV Special - 99¢ JUNE 26th
STAR-KIST Chunk Style TUNA **\$1**
3 NO. 2 CANS FOR

FRESH PURE 100% GROUND BEEF 29¢ LB.
FRESH PORK ROASTS LB. 39¢
FRESH PORK STEAK LB. 49¢
SWIFT'S RIVAL SLICED BACON ONE-LB. PACKAGE 49¢
PURITAN SKINLESS DINNER FRANKS LB. 39¢
CUDAHY NUTWOOD SHORTIES CERVELAT LB. 49¢
CRISP, FRESH LETTUCE PER HEAD... 10¢
WATERMELONS WHOLE or HALF 5¢ LB.
CANTALOUPE MELLOW-RIFE 15¢ EACH
TOMATOES... LB. 15¢
NEW POTATOES U.S. No. 1 RED 10 59¢ LB.
RING CHERRIES—PLUMS—CARROTS—LEMONS—ASPARAGUS
• FROZEN FOODS •
FLAV-R-PAC STRAWBERRIES 12-oz. package **29¢**
FLAV-R-PAC LEMONADE 2 6-oz. CANS **29¢**

Charmin Toilet Tissue 12 ROLLS \$1

DOLLAR DAY SPECIALS
for Monday, Tuesday, Wednesday — June 21, 22, 23
Superb Golden Cream Style **CORN 6 No. 303 Cans \$1**
Superb **FRUIT COCKTAIL 4-303 tins \$1**
Granulated **SUGAR 10 Lbs. \$1**
Carnation **MILK 7 Cans \$1**
Old Manse **JELLIES 5 Jars \$1**
Swift's, Armour's, Cudahy's **LARD 4 Lbs. \$1**

MONEY-SAVING MAYTAG!



This **GENUINE MAYTAG** washer costs scarcely more than the lowest-priced washer you can buy!

129.95

- Saves money!
- Saves time!
- Saves your clothes!
- Here's your biggest washer value!
- Come in and see it!

Maytag has all these convenient features!

- Gyrafoam washing action to get clothes really clean safely.
- Exclusive Roller Water Remover to remove more water.
- Maytag construction throughout for many extra years of finest performance.

We'll give you a liberal trade-in for your old washer, and easy, easy terms

WM. KROTTER CO.

Maytag Sales & Service

WEST O'NEILL

PHONE 531