

4-H (Continued)

(Continued from page 15)

- 11. Angus steers
Blue, Red, White
- 12. Shorthorn steers
Blue, Red, White
- 13. Hereford steers
Blue, Red, White
Blue, \$5; red, \$4; white, \$3.
Purple group to be selected. Non ribbon winners, \$1.
- Stocker-Feeder Steers & Heifers**
- 14. Angus heifers
Blue, Red, White
- 15. Shorthorn heifers
Blue, Red, White
- 16. Hereford heifers
Blue, Red, White
- 17. Angus steers
Blue, Red, White
- 18. Shorthorn steers
Blue, Red, White
- 19. Hereford steers
Blue, Red, White
Blue ribbon award, \$4; red ribbon, \$3; white ribbon, \$2.
Purple ribbon group to be selected. All non-ribbon calves, \$1.

Club Group of Three Beef and Dairy

- 20. Any club may select three animals to show as a group. All three must belong in the same class, such as baby beef, stocker-feeder, etc. All beef groups compete together. All dairy groups compete together.
Blue, \$5; red, \$4; white, \$3.

4-H Dairy Cattle

Each breed will have all divisions. Awards will be the same for each division. A purple award group within dairy will be selected if show warrants.

Special Awards

Co-op special award first three in each class.

Harding Creamery, give Dairy heifer as special dairy award.

Duane Gray & Curtiss Candy Company, free breeding service to two top exhibitors in each class.

- 21. Jr. calves (born Jan. 1, 1955 to Feb. 28, 1955).
- 22. Senior calves (born July 1, 1954 to Dec. 31, 1954).
- 23. Junior yearlings (born Jan. 1, 1954 to June 30, 1954).
- 24. Senior yearlings (born July 1, 1953 to Dec. 31, 1953).
- 25. 2-year-olds (born July 1, 1952 to June 30, 1953).
- 26. Cows over 2 years old. (All cows born prior to July 1, 1952.)
Senior yearlings that have been freshened on or before the day of the show must show in class for 2-year-olds.
Blue, \$5; red, \$4; white, \$3

Club Groups of 3

- 27. Club group of three dairy animals. Any club may select three animals from one class and show as a group.

LOT 4 — HOGS

4-H members carrying market hogs or sow and litter projects are eligible to show in this lot. An animal can be shown only in one class in 4-H division.

- 28. Market hog — fat barrow or gilt
Blue, \$3; red, \$2; white, \$1; all others 50c.
- 29. Market litter—6 or more gilts and barrows
Blue, \$10; red, \$7.50; white, \$5; and all others, \$1.
- 30. Purebred litter — 6 or more boars and gilts
Blue, \$10; red, \$7.50; white, \$5; all others, \$1.
- 31. Purebred gilt born after January 1, 1955
Blue, \$3; red, \$2; white, \$1; all others, 50c.
- 32. Purebred boar born after January 1, 1955
Blue, \$3; red, \$2; white, \$1; all others, 50c.

All classes of hogs to be shown by breeds with purple awards if show warrants, all breeds competing together in each class for purple award.

Special Award

\$75 Sears Roebuck Foundation award, to exhibitors of Sears Foundation swine projects.

LOT 5 — SHEEP

Only 4-H club members carrying sheep projects may compete.

- 33. Fat lambs—Blue, red, white
- 34. Breeding ewe lambs
Blue, red, white
- 35. Bucks over 1 year
Blue, red, white
Blue, \$3; red, \$2; white, \$1. All others, 50c. Purple award if show warrants.

LOT 6 — SADDLE STOCK

- 36. Yearling colts, 1 year and under.

- 37. One to 2 years of age.
- 38. Over two years of age.
Blue, \$5; red, \$4; white, \$3. All others, \$1. Purple award if show warrants.

Agriculture and Home Economics

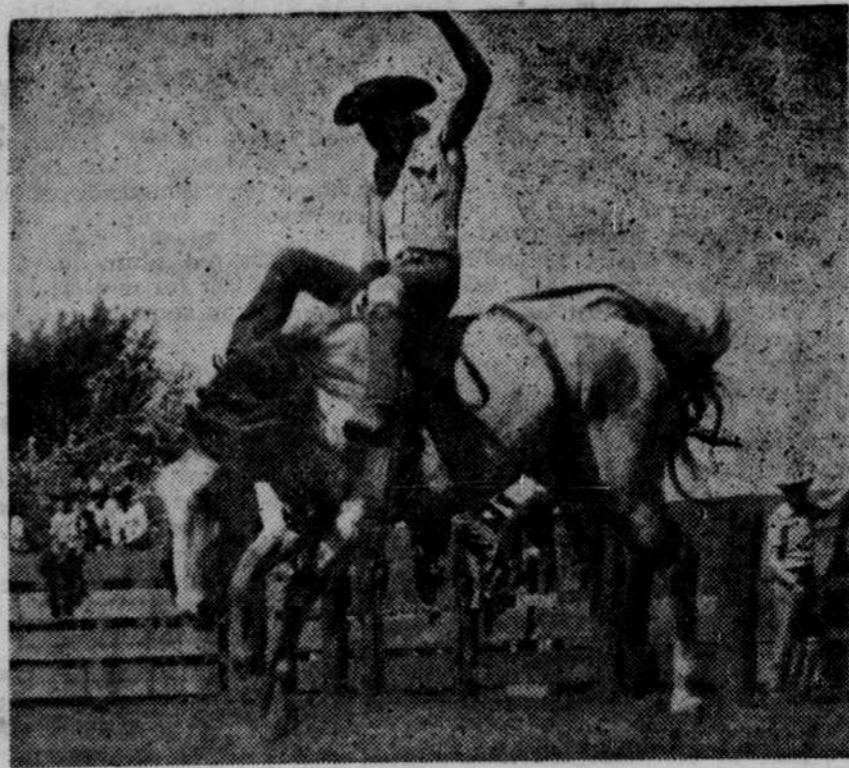
Only members of 4-H clubs are eligible to exhibit in the following classes. A member must exhibit in the project he or she is carrying, and the article must have been completed since the last fair. Members are urged to make entries early with Mrs. Glead. Entries may be made up until 6 p.m., Wednesday.

Commercial Club Awards

The Chambers Commercial Club is again this year giving cups in the 4-H classes. These cups to go to the animals judged best in their class picked from the purple ribbon winners in each class, regardless of breed.

- Breeding heifers.
- Cow and calf.
- Fat calves.
- Stocker-feeder.
- Dairy heifer.

(Continued on page 17)



Ride 'em, cowboy. This scene will be re-enacted frequently at this year's rodeo!

Fewer Nebraskans Leaving State—

Nebraska lost about 5.3 people per 1,000 population because of interstate migration from April, 1950, to June, 1954, according to figures published in the statistical bulletin of the Metropolitan Life Insurance Co.

The emigration rate, although slightly higher than the July, 1945, to March, 1950, figure, was much lower than during the World War II years.

Nebraska's rate of loss during the 1950-'54 period was lower than those of Iowa and the Dakotas. Kansas lost 2.1 per thousand.

Only state in the seven-state west north-central area, which includes Nebraska, that recorded a gain was Missouri.

Nevada, which gained 63.7 per thousand, was the biggest gainer from interstate migration. Other high gainers were Arizona, California and Florida.

Tune in "Voice of The Frontier", thrice weekly!

We'll be seein' you . . .

— AT THE —



. . . and the 1955 . . .

HOLT COUNTY FAIR

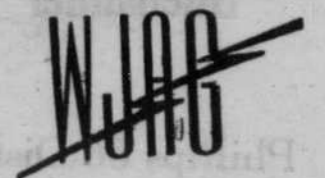
VOICE OF THE FRONTIER

SPECIAL EVENTS UNIT

"The Voice of North-Central Nebraska's BIGGEST Weekly Newspaper"

Ask your neighbor, ask anyone . . . they'll agree that folks in the O'Neill region listen most to the "Voice of The Frontier" . . . they depend upon this concise, newsy and entertaining program for what they want to hear.

Half Hour Show!
"Voice of The Frontier"



Mon. — Wed. — Sat.
9:30-10 A.M. — 786 k.c.