

Assessed Valuations for '55 Down in Holt

Holt county's assessed valuation for 1955 is lower than a year ago, according to an abstract of valuations filed last week with the state tax commissioner. Total assessed valuation for 1955 is \$34,361,133, excluding rail and franchise valuations, according to County Assessor William F. Welso.

Total assessed value of real estate	22,203,805
Total assessed value of individual schedules	8,673,283
Total assessed value of business schedules	1,297,462
Total assessed value of special schedules	2,206,583
Total assessed value*	\$34,361,133

(*This does not include R.R. franchises)

Intangible "A"	\$2,827,006
Intangible "B"	\$23,502
Banks, Loan and Trust Co.	\$1,139,130

Harvesting Progresses Rapidly

Oats crop 'Good' in Page Area While Holt Hay Only 50%

Holt county's 1955 small grain harvest is progressing rapidly. Conditions have been good for harvest, although most farmers and ranchers would welcome moisture at the expense of delaying the finish in the harvest field.

Board Named in Equalization Suit

The Holt county board of equalization has been named defendant in a petition filed Saturday, July 16, in district court here. The petitioners, Frank J. Brady, Earl Coxbill and Charley W. Peterson, all of Atkinson, are appealing to the district court from the recent actions and decisions of the board on real estate valuations.

Mrs. Michael Hull Funeral Today

Funeral services will be conducted at 2 p.m. today (Thursday) in Lynch for Mrs. Michael Hull, 81, longtime resident of northern Holt county. Mrs. Hull died at 3 a.m., Tuesday, July 19, at her home at Redbird.

On December 19, 1894, she married Michael Hull at O'Neill. They spent several years farming near Boone, Ia., but lived in Holt county, in the Scottville and Redbird vicinities, about 58 years. Last December they observed their 60th wedding anniversary.

Dr. F. J. Fisher Taken by Death

Funeral services will be conducted today (Thursday) in Sacred Heart Catholic church in Norfolk for Dr. F. J. Fisher, 69, a Norfolk dentist who formerly resided in O'Neill. Burial will be at Wahoo.

Postal Receipts Up; New Carrier Named

Receipts for the fiscal year ending June 30, showed a substantial increase for the first-class O'Neill postoffice—an increase of about five thousand dollars.

WILSON RETURNS
Clark Wilson, former manager of the Tri-State produce, hatched and turkey farm, has returned to O'Neill and is now at the turkey farm, which he is managing. Mr. Wilson has been located in the Southwest.

Half Hour Show!
"Voice of The Frontier"

W. J. AB

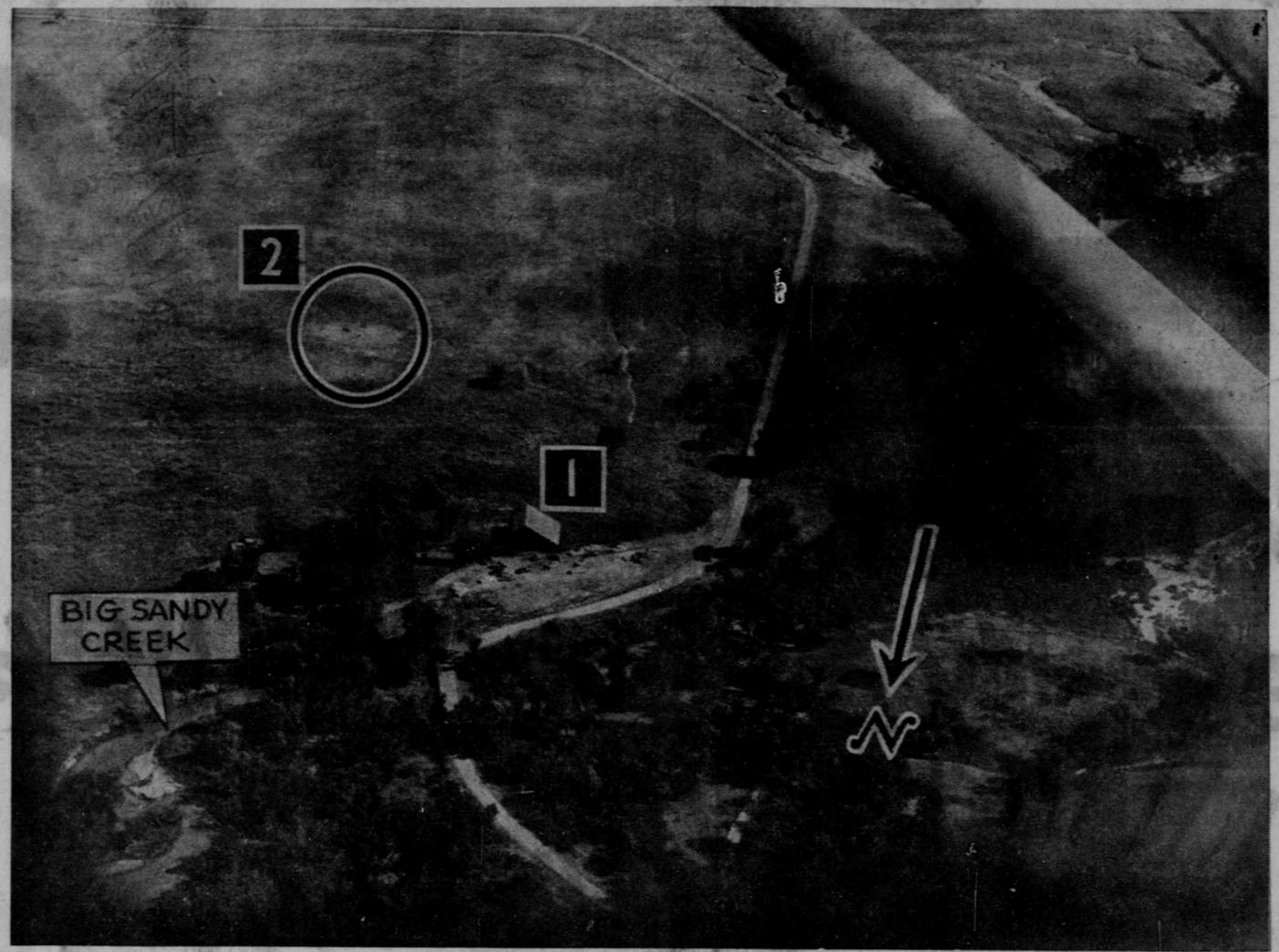
Mon. — Wed. — Sat.
9:30-10 A.M. — 780 k.c.

THE FRONTIER

North-Central Nebraska's BIGGEST Newspaper
Volume 75.—Number 12.
O'Neill, Nebraska, Thursday, July 21, 1955.

TWELVE PAGES
Pages 1 to 12
Seven Cents

Murder, Suicide Causes of Deaths



The search for Moran Pettijohn was centered in this area shown (above), known as the Lemon ranch, 19 miles north of Atkinson. Mrs. Michaelsen's blood-stained car was located in the abandoned barn (1) Saturday evening; the body of Pettijohn was located by a sheriff's posse Sunday afternoon about three hundred yards away (2). The deserted hillside chapel is obscured by trees in the left foreground.—The Frontier Photo.



Among the members of the posse locating Pettijohn's decomposed body, thus ending a difficult and widespread manhunt, were (left-to-right): Francis Kollman of Stuart, Lawrence Rudolph of Stuart (the town's marshal), John A. Hoffman of Bassett and H. S. Duvall of Atkinson. Pettijohn's body is shown in tall weeds in foreground; blankets are at left.—The Frontier Photo.

Doctor Bennett's Condition 'Grave'

A Sioux City heart specialist called Wednesday to attend Dr. H. L. Bennett, longtime O'Neill veterinarian, has described the O'Neill man's condition as "very grave."

EXTRA COPIES AVAILABLE

Extra copies of this issue of The Frontier, which conveys a complete picture and text story of the Michaelsen-Pettijohn case are available at the regular newsstands and at The Frontier counter, The Wilson drug store in Atkinson and the Mueller drug store in Stuart, both in the center of interest area, have The Frontier on sale at seven cents per copy.

FRACTURES BACK
NEWPORT — James Seger, rancher near Newport, fell from the top of a haystack Friday afternoon and suffered a fractured back. He was taken to Atkinson Memorial hospital and his condition is "good." Seger will be confined to his bed for some time.

Michaelsen-Pettijohn Sidelights

closing gates and checking windmills and he was driving much less than 80 per.

Pettijohn 'Clean, Industrious'
Fred Horn, Atkinson rancher, said Moran Pettijohn had worked for him until about two years ago. He described Pettijohn as "clean, industrious and smart."

Atkinson reported about an inch of rainfall Tuesday evening. In the early hours Wednesday morning O'Neill recorded .07 of an inch; the Midway locality received a light shower about 1:30 o'clock Wednesday afternoon.

Pettijohn attended school in Stuart. He started high school but quit before graduation. He

(Other photos on pages 6 and 9)
The bizarre story of a murder and suicide unfolded in northern Holt county during the weekend. Badly decomposed bodies of two persons were found 15 miles apart.
The body of the woman accidentally was found about 3 p.m., Friday at a point 13 miles north of Stuart and one mile west; the body of the man was located about 4:15 p.m., Sunday at a point 19 miles north of Atkinson.
Dead are:
MRS. BETTY MICHAELSEN of Stuart, 45, who died of strangulation, apparently the victim of a deranged man who had been known to be her companion.
MORAN ("SARGE") PETTIJOHN of Stuart, 41, a former Norfolk state hospital patient, who took his own life.

Ex-Serviceman Is Drowning Victim

LYNCH—Military funeral services were held for Eugene Simpson, 23, in the Assumption Blessed Virgin Mary Catholic church at Lynch Saturday, July 16, at 10 a.m., with Rev. John Wiczorek reading requiem high mass. The Verdel and Lynch American Legion posts had charge of the services.

JAYCEES TO PRESENT SOUSA MUSIC AWARD
The first annual John Philip Sousa awards to the leading band member from each of the city's schools—O'Neill public and St. Mary's academy—will be presented during an outdoor concert Sunday afternoon, July 24, in Ford's park. The free concert will start at 2 p.m., under the direction of Charles B. Houser.

DR. FISHER TAKEN BY DEATH
Funeral services will be conducted today (Thursday) in Sacred Heart Catholic church in Norfolk for Dr. F. J. Fisher, 69, a Norfolk dentist who formerly resided in O'Neill. Burial will be at Wahoo.

REDBIRD WOMAN, 81, LONG ILL
Funeral services will be conducted at 2 p.m. today (Thursday) in Lynch for Mrs. Michael Hull, 81, longtime resident of northern Holt county. Mrs. Hull died at 3 a.m., Tuesday, July 19, at her home at Redbird.

POSTAL RECEIPTS UP; NEW CARRIER NAMED
Receipts for the fiscal year ending June 30, showed a substantial increase for the first-class O'Neill postoffice—an increase of about five thousand dollars.

DR. FISHER TAKEN BY DEATH
Funeral services will be conducted today (Thursday) in Sacred Heart Catholic church in Norfolk for Dr. F. J. Fisher, 69, a Norfolk dentist who formerly resided in O'Neill. Burial will be at Wahoo.

REDBIRD WOMAN, 81, LONG ILL
Funeral services will be conducted at 2 p.m. today (Thursday) in Lynch for Mrs. Michael Hull, 81, longtime resident of northern Holt county. Mrs. Hull died at 3 a.m., Tuesday, July 19, at her home at Redbird.

POSTAL RECEIPTS UP; NEW CARRIER NAMED
Receipts for the fiscal year ending June 30, showed a substantial increase for the first-class O'Neill postoffice—an increase of about five thousand dollars.

DR. FISHER TAKEN BY DEATH
Funeral services will be conducted today (Thursday) in Sacred Heart Catholic church in Norfolk for Dr. F. J. Fisher, 69, a Norfolk dentist who formerly resided in O'Neill. Burial will be at Wahoo.

REDBIRD WOMAN, 81, LONG ILL
Funeral services will be conducted at 2 p.m. today (Thursday) in Lynch for Mrs. Michael Hull, 81, longtime resident of northern Holt county. Mrs. Hull died at 3 a.m., Tuesday, July 19, at her home at Redbird.

POSTAL RECEIPTS UP; NEW CARRIER NAMED
Receipts for the fiscal year ending June 30, showed a substantial increase for the first-class O'Neill postoffice—an increase of about five thousand dollars.

DR. FISHER TAKEN BY DEATH
Funeral services will be conducted today (Thursday) in Sacred Heart Catholic church in Norfolk for Dr. F. J. Fisher, 69, a Norfolk dentist who formerly resided in O'Neill. Burial will be at Wahoo.

REDBIRD WOMAN, 81, LONG ILL
Funeral services will be conducted at 2 p.m. today (Thursday) in Lynch for Mrs. Michael Hull, 81, longtime resident of northern Holt county. Mrs. Hull died at 3 a.m., Tuesday, July 19, at her home at Redbird.

POSTAL RECEIPTS UP; NEW CARRIER NAMED
Receipts for the fiscal year ending June 30, showed a substantial increase for the first-class O'Neill postoffice—an increase of about five thousand dollars.

DR. FISHER TAKEN BY DEATH
Funeral services will be conducted today (Thursday) in Sacred Heart Catholic church in Norfolk for Dr. F. J. Fisher, 69, a Norfolk dentist who formerly resided in O'Neill. Burial will be at Wahoo.