

Cardinals Claim State 8-Man Title

By a Staff Writer
As far as folks in these parts are concerned, the 1936 St. Mary's academy Cardinals are eight-man grid champions of Nebraska.

The claim is not easily contested. Lawrence, south of Hastings, had been rated in the top three

slots in mythical standings by the Omaha World-Herald, and had floated in Lincoln Star ratings but last week was pegged at fifth. SMA regularly rated below Lawrence and a veterans day game was cooked up.

Coach Don Templemeyer's kids flashed power early but it wasn't until the dying seconds of the first period—after a punting duel—that the ice was broken. Gene Schneider faked a kick and carried 20. From the Lawrence three, Bill Craig bounced across the corner of the endzone.

In the second, Craig hit Larry Tomlinson for a pass that carried 31 yards. Gale Stevens jump-passed to Tomlinson, who took it on

the nine and carried several Panthers across the goal with him. The PAT tries had failed but St. Mary's led 12-0. It was still early in the second.

After an exchange, Craig fooled everyone including some of his own teammates. He doubled back after running wide on the Lawrence 23, went through middle, drifted to the sidelines and cut across. It was 18-0 and the heralded Panthers were reduced to a paper threat.

Lambert Belina on an end-around carried 40 yards to setup the next TD in the period that resembled a blitz. Stevens carried a half-yard on a quarterback sneak, Craig ran the point and it was 25-0 and intermission time.

South-Nebraskans were dumbfounded by the storm that had struck out of the north! Statistically each club had racked up seven first downs but the scoreboard told the story.

On the second play after intermission, Craig zeroed Tomlinson. The play covered 45 yards and hid the production figure to 31. Schneider plunged for the extra point.

Tomlinson had taken the ball over his shoulder in full stride at the Panther 15 and nobody touched him going across.

Schneider capped a drive with a plunge from the three and he also carried for the PAT. Score: 39-0. From the Panther 26, Craig hit Tomlinson again and Schneider added. The board read 46-0 and it was midway in the fourth.

Wanser Hits
Larry Wanser, operating at the quarterback slot, sneaked from the Panther one after a second try for the final TD and Craig added, ending the scoring.

The TD was setup on a Craig-to-Belina pass that covered 40. Schneider's driving power netted 78 yards in 13 carries. Craig hit seven of 10 aerial tries for 215 yards and a bushel of points. Tomlinson snagged five passes.

Four times Lawrence was inside SMA's 10 (thrice in one period), but couldn't puncture the Cardinal line.

Seniors playing the last game for SMA were Tomlinson, Belina, Craig, Wanser, Schneider, Larry Donohoe, Gene Turner, Paul Ziska, Keith McKim, Charley Mahoney, Terry Hynes.

Ziska, Hynes, Stevens and Tom Higgins turned in outstanding games in addition to action described.

Lawrence had 13 first downs; SMA, 11. The parochial kids rolled up 412 yards passing and rushing compared to 135 for the host team. Tomlinson had turned in his greatest grid game of his career, accountable for nearly half the tackles. Craig's throwing was great.

Gregg McBride of the Omaha World-Herald had picked Lawrence a winner in a pregame selection.

Fullback Himmelberg, 185-pounder, bruised the Cards with some of his running and End Don Bekye snagged four passes for the losers. Lawrence entered the game undefeated.

The win climaxed a perfect season for the Templemeyer kids who have just finished the greatest SMA grid season in history.

O'Neill's Eagles Make It Official

Sink Atkinson, 34-0, in Finale

Coach Marv Miller's O'Neill high Eagles wrapped the 1936 North-Central conference grid crown Friday night on a cold and windswept Atkinson high grid, winning in a walk, 34-0.

Technically the Eagles hadn't led the crown the week before by turning back Valentine, 7-6, but it was as good as in the fold and the Balers couldn't alter things.

It was finale for Ronnie Smith, Jimmy Larson, Bob Williamson, Butch Wheeler, Mike Spitzzenberger and Merik Pease, playing their last game in Blue grid togs. Although there had been showers in the area it was dry underfoot.

O'Neill scored initially when Fullback Dennis Tomlinson smashed across from the three. It was the start of a big evening for "Squeaky".

Smith carried for the PAT and O'Neill led 7-0 early in the first. "Squeaky" intercepted an Atkinson aerial and ran 40 yards for the second TD—still in the first period. No one was in front and he sped the distance unmolested. Smith plunged for the point and it was 14-0.

Larson skirted 25 yards around his own left end on O'Neill's third marker—still in the opening period. A kick for point was wide and the stanza ended, 20-0.

O'Neill went scoreless in the second but Miller used substitutes liberally. Darald Ermer looked good at left half and Bill Fricke sparkled up front at right guard.

In the third, Tomlinson went through the middle for 35 yards to score again and picked the point. The board read: 27-0.

Jack McGinn, sub quarterback, sneaked later for O'Neill's fifth TD and Ermer added the point.

It was no contest with O'Neill's second and third teams playing the Balers on fairly even terms.

Paul Baker of Omaha, former O'Neill high cage coach, points out that the Eagles first joined the North-Central in 1932 and won the conference championship in football, basketball and track with the grid team—under Miller—enjoying an undefeated and untied season. The 1936 edition is O'Neill's best in the six-year interval.

Meanwhile, Friday night the Stuart Broncos hit the Bassett Tigers, 14-12, in a loop encounter which wrapped up season's play.

Final league standings, according to Ferd Mulford of Stuart, league statistician:

NORTH-CENTRAL CONFERENCE STANDINGS

Team	W	L
O'Neill	4	0
Stuart	4	1
Valentine	4	2
Bassett	3	3
Ainsworth	3	3
Springview	2	4
Atkinson	0	6

Bible Conference Set at Plainview
PLAINVIEW—Plans are well under way for a three-day Bible conference to be held at the Plainview Methodist church November 23-24-25 with Dr. Charles F. Kraft of Garrett Methodist seminary, Evanston, Ill., an outstanding Bible lecturer and authority on the Old Testament, as the featured speaker. There will also be a question and answer period each evening.

The meetings will begin at 8 p.m. and are open to the public. Methodist church workers of many towns in the Plainview area are expected to attend.

A coffee hour will follow each evening after the sessions.

Parents Celebrate 50th Anniversary
Mr. and Mrs. George Burrows of Platte Center Sunday celebrated their 50th wedding anniversary at the Platte Center auditorium. Two hundred persons were served at noon. Mrs. Brock Reynolds of O'Neill is a daughter of the honored couple.

Visits Parents
Leaving Sunday for their home in Kansas City, Mo., were Mr. and Mrs. Richard Bogan, who visited her parents, Dr. and Mrs. F. J. Kubitschek, Dr. William Kubitschek of Denver, Colo., was here hunting with his father and left Monday.

Please phone us your news!

Good Reading for the Whole Family

• News • Facts • Family Features

The Christian Science Monitor
One Norway St., Boston 15, Mass.

Send your newspaper for the time checked. Enclosed find my check or money order. 1 year \$18 00
6 months \$9 00 3 months \$4.50 00

Name _____
Address _____
City _____

The Frontier's All-Holt Selections



ROBERT KLABANES, Chambers Center



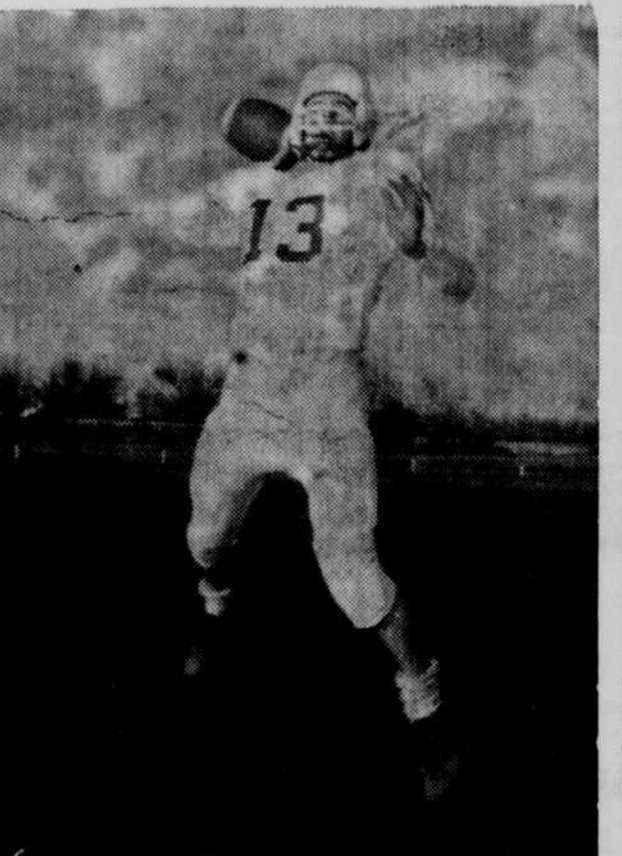
LARRY DONOHOE, St. Mary's, Guard



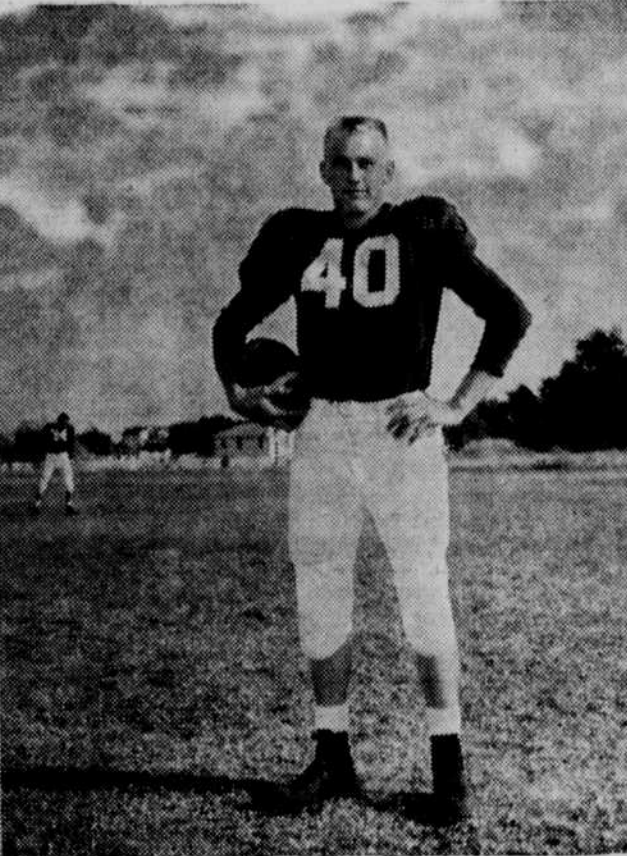
ROBERT WHEELER, O'Neill, Tackle



RONNIE SMITH, O'Neill, Halfback



BILL EBY, O'Neill, Quarterback



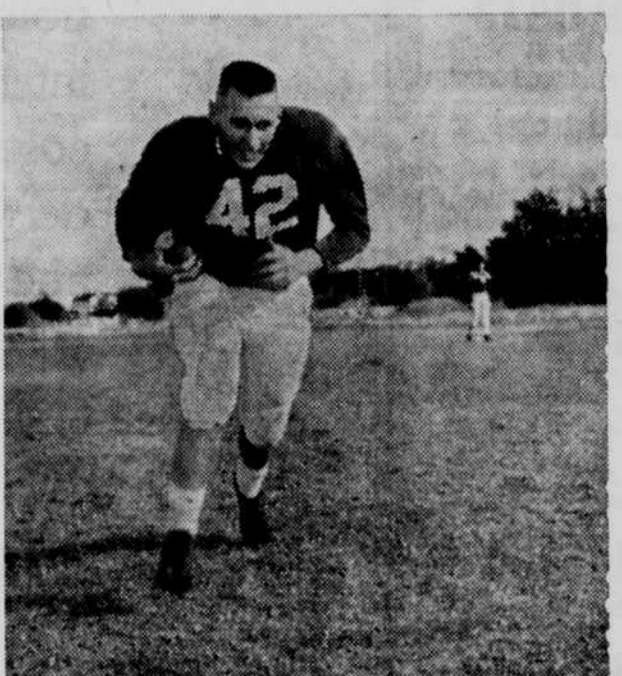
LARRY TOMLINSON, St. Mary's, End



JERRY WALLINGER, Stuart, End



JERRY TAYLOR, Stuart, Halfback



GENE SCHNEIDER, St. Mary's, Fullback



MIKE SPITZENBERGER, O'Neill, Guard



WILLIAM BAKER, Atkinson, Tackle

Presenting The Frontier's 12th Annual All-Holt Grid Team

END—LARRY TOMLINSON, St. Mary's	Senior	17	6' 1"	192
END—JERRY WALLINGER, Stuart	Senior	17	5' 10"	158
TACKLE—ROBERT WHEELER, O'Neill	Senior	18	6' 1"	175
TACKLE—WILLIAM BAKER, Atkinson	Senior	17	5' 9"	155
GUARD—LARRY DONOHOE, St. Mary's	Senior	17	5' 9"	186
GUARD—MIKE SPITZENBERGER, O'Neill	Senior	18	6' 0"	170
CENTER—ROBERT KLABANES, Chambers	Senior	17	5' 9"	180
QUARTERBACK—BILL EBY, O'Neill	Junior	16	5' 10"	157
HALFBACK—JERRY TAYLOR, Stuart	Senior	17	5' 8"	160
HALFBACK—RONNIE SMITH, O'Neill	Senior	17	5' 9"	167
FULLBACK—GENE SCHNEIDER, St. Mary's	Senior	17	5' 10"	179

Picking the mythical all-holt county 11-man football team has been a breeze in seasons past compared to the problems confronting coaches, officials, sport writers and a sportscaster who participated in The Frontier's 12th annual selections.

This year's honor team was put together laboriously and painstakingly and, not surprising, all ballots were at wide variance. No single coach saw all teams play. Some of the voters saw only one or two other teams in action other than their own.

In a nutshell: O'Neill high landed four berths, O'Neill St. Mary's, three; Stuart, two; Atkinson and Chambers, one each.

Unanimous choices were SMA's Larry Tomlinson, end, a repeat, from last year's honor club; Ronnie Smith, hardrunning O'Neill back; Jerry Taylor, Stuart back who is the fleetest of all in these parts, and Butch Wheeler, strong O'Neill tackle.

Here were some of the problems that had to be hammered out with The Frontier sports editor: Under pressure, a plenty by virtue of O'Neill's schedule, Bill was crowded by SMA's Bill Craig, also an excellent passer. But Craig didn't get into as many crucial situations because the SMA line always dominated the opposition line. Craig was out part of the season and showed greatness against Lawrence. Eby's choice won't be popular at Stuart where they owned Tom Bigelow, 6'1 1/2" and 160 pounds, an excellent ball handler and signal caller.

RONNIE SMITH, O'Neill, halfback: Hard and shifty runner and carried the brunt of the Eagles' offensive running load. Barely passed over last year, a shoo-in this season.

JERRY TAYLOR, Stuart, halfback: Gained 1,172 yards in 149 carries for an average of 8.1. He scored 75 points and is the fastest back by far in Frontier Land.

GENE SCHNEIDER, St. Mary's, fullback: Most powerful runner in the area, averaged 13 yards per carry in eight-man competition and racked up 112 points (school record). Seven of his TD's came on runs over 40 yards. Topflight linebacker.

It happens there are only 11 berths on the mythical roll. Others unavoidably left by the wayside: Jerry Hahlbeck, Ewing back, who couldn't draw enough support from Atkinson and Stuart balloters; Richard Schmaderer, Stuart fullback, who would have landed the berth except for Schneider's polish; Jim Larson, O'Neill half, who ran well and deceptively but had to relinquish to the unanimous Smith-Taylor duo; Lambert Belina, SMA end, who scored six TD's on pass receptions and intercepted four; Jim Cavanaugh of Chambers, most powerful offensive lineman; and Dave Garwood and Charley Sweet, Atkinson linemen.

Ballots were turned in by these coaches: Don Templemeyer of SMA, Marv Miller of O'Neill high, Tom Hutton of Ewing, Wayne Gesireich of Chambers, Bob Lindstead of Atkinson, Ray Shearer of Stuart, John Brady of KVHC, Ira Ready of the Stuart Advocate and The Frontier sports department.

Niobrara Valley Conference All-Stars

Coaches of the eight-man Niobrara Valley grid conference Monday night at Spencer selected the following mythical all-conference honor teams for the just-ended season:

FIRST TEAM
ENDS—Knudson of Niobrara and Larry Tomlinson of St. Mary's (latter the only unanimous choice).

GUARDS—Tunender of Spencer and Sukup of Verdigris.

CENTER—Sting of Butte.

BACKS—Gene Schneider of St. Mary's, Bob Kryas of Butte, Al Brady of Lynch.

SECOND TEAM
ENDS—Reisselman of Butte and Sixta of Lynch.

GUARDS—Jack Welch of Verdigris and Vic Pickering of Lynch.

CENTER—Gene Turner of St. Mary's.

BACKS—Lukens of Niobrara, Jerry Roether of Butte, Andy Ohri of Spencer.

St. Mary's resignation from the league was accepted. SMA wants to play 11-man ball next year and already has three or four teams tentatively signed.

Friends of St. Mary's card party Sunday eve, November 16. Everyone invited.

The TRUE VALUE OF YOUR INSURANCE CAN ONLY BE MEASURED IN SERVICE!

STATE AUTO Agent
Why not ask your Agent to review your present insurance policies—perhaps he can "package" them at a saving to you.

RITCHEE AUTOMATIC HEATED WATERERS
SAVE LABOR
MAKE GREATER PRODUCTION GAINS

The RITCHEE automatic heated waterers work for you twenty-four hours a day unattended. They come in many sizes and combinations, and are ideal for the dairy farmer, beef feeder and hog raiser. These fully insulated automatic waterers are the result of years of development and successful farm use.

Kelly's Plumbing
O'Neill — Phone 721

50th Anniversary
Good Reading for the Whole Family

• News • Facts • Family Features

The Christian Science Monitor
One Norway St., Boston 15, Mass.

Send your newspaper for the time checked. Enclosed find my check or money order. 1 year \$18 00
6 months \$9 00 3 months \$4.50 00

Name _____
Address _____
City _____

INSURANCE

For reliable low cost Dwelling and Auto Insurance in the Farmers Mutual Insurance of Nebraska, and the Iowa Home Mutual Insurance of Des Moines, Ia., WITHOUT PAYING AN EXTRA PREMIUM TO PAY LOSSES OF \$50.00 OR LESS, FOR WIND AND HAIL (DWELLING AND COMPREHENSIVE—CAR)

— SEE —
L. G. Gillespie Insurance Agency
O'NEILL, NEBR. — PHONE 114 OR 218

Thanks & Appreciation

To the voters of the Third District

CLARENCE ERNST