

## North-Central Crown Goes to Miller's Eagles

By a Staff Writer  
With the North-Central conference title at stake, the O'Neill high school football team played a hard fought game Friday night with the result the goal posts were uprooted.

You see, O'Neill won it, 7-6, giving the Eagles the first loop title in 10 years.

Valentine scored first when Jack Murphy backed across from the O'Neill one midway in the second period. A pass intended for Gooch for the PAT was no good.

By this time the game bore all the earmarks of a ripper.

O'Neill's aerials were clicking and Bill Eby hit twin brother, Bob, carrying to Valentine's 21. It was the second brother-to-brother connection 'til that point. A Badger offside penalty moved the piskin to the 16. Jim Larson carried to the 10; Ronnie Smith went to the seven.

Eby uncocked across center to Larson and it was 6-6. Bill Eby, quarterback for the Blues, faked a kick attempt for the PAT and completed a pass for what turned out to be the all-important point.

After an exchange of punts in the third, Bill missed finding Brother Bob. Larson ran to the 16 and O'Neill was knocking again. O'Neill tried the air again and lost the ball on downs.

Murphy ripped off 18 yards for the Badgers, carrying to the 39. The march never materialized and O'Neill took over. The Eagles

couldn't move and the third ended. Valentine blocked Bill's boot and took over on O'Neill's 35. Valentine's Don Eby broke loose and moved to O'Neill's 20. The same guy hunted for a receiver, fumbled, recovered, was chased by the Badger, finally got back to O'Neill's 45. It was fourth and 35.

The determined Valentine bid ended on O'Neill's 15 and O'Neill partisans wiped perspiration from their brows.

Smith, running hard all evening, carried out to O'Neill's 29 for a first down. He slammed in again to the 34 and picked up a shoulder injury. O'Neill was obliged to boot and Eby's kick was almost blocked by the Badgers who were pressing hard for a break.

Smith looked a Badger aerial and O'Neill took control again on the Eagles 24 with four minutes left.

Smith and Larson carried to the 36 with three minutes on the clock. Bill Eby deftly handed off to Smith who carried to the 44 and virtually sealed control for most of what was left. Larson shook off three would-be tacklers in picking up a couple of yards.

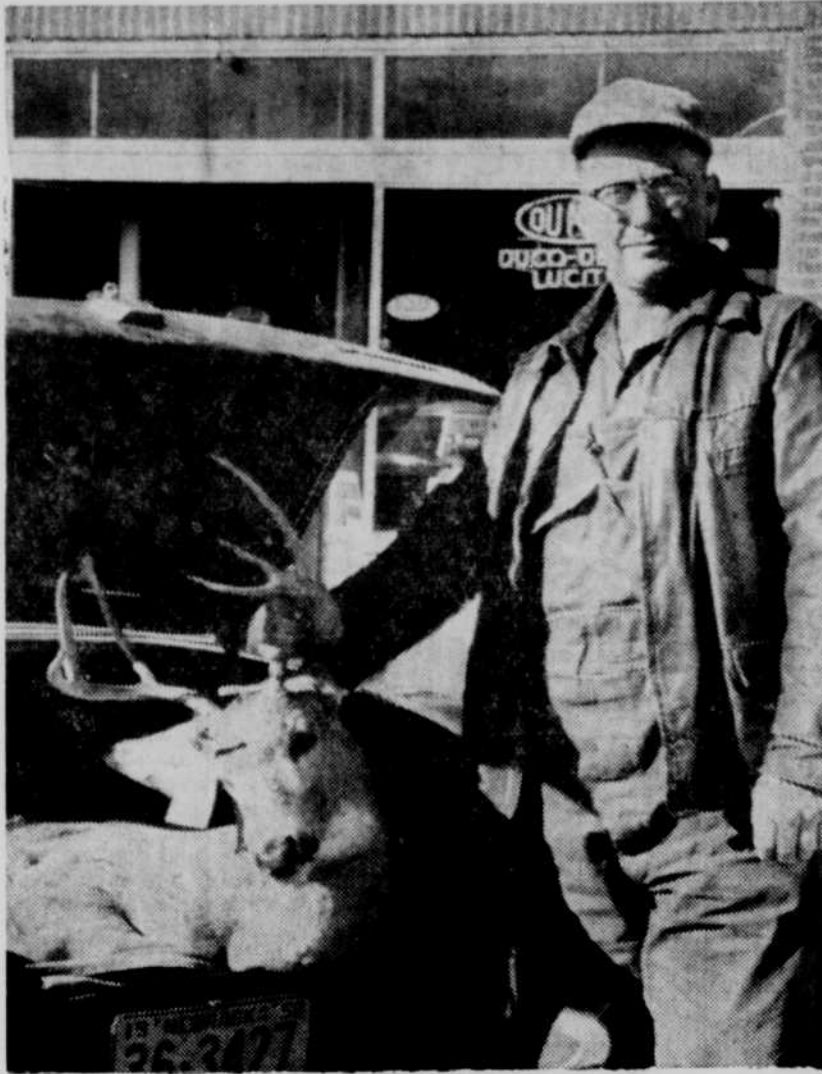
Durable Mr. Smith smacked 'em for seven. Bill, on a keeper, carried to Valentine's 47. O'Neill lost five on too much time. Smith on a handoff found seven. Eby managed two.

O'Neill finally kicked to Valentine's Eby who ran hard up field but Larson nailed him. Murphy was on the receiving end of a pass play that covered 10, but . . . of a sudden the gun barked and the goal posts came down!

Coach Mary Miller's kids, underdogs, had won it. O'Neill travels to Atkinson Friday night for the season's finale. League standings according to Ferdy Mulford of Stuart, league statistician:

	W	L
O'Neill	3	0
Stuart	4	2
Valentine	3	2
Bassett	3	2
Ainsworth	3	3
Springview	1	4
Atkinson	0	5

Entertains Guests—  
Eddie Gatz, a pre-med student at Creighton university, Omaha, entertained three houseguests over the October 25-26 weekend. They are also students at Creighton.



Lawrence Rouse . . . his deer was the first shot at the O'Neill station.—The Frontier Photo.

## 54 Deer Checked at Station Here

### Rouse, Laursen Are First In

Fifty-four deer were checked in at the O'Neill checking station at the courthouse until 5 p.m. Wednesday. The 1958 season on bucks-only ended two hours later.

Antelope, Knox, Boyd and Holt formed the upper Missouri river district. In Keya Paha county deer hunting was permitted Wednesday only. The season opened Saturday.

Deer were generally scarce, probably frightened into seclusion by pheasant hunters who have been beating the bushes.

Harold Edwards of Norfolk, employee of the state game commission, was in charge of checking here. Lawrence Rouse of O'Neill brought in the first deer. Second was checked in by Arden Laursen of O'Neill, a 175-pounder.

Twenty-five were checked in at Neligh. The first was brought in by Warren Hill, 16, of Orchard, who had a leg amputated early this year as a result of a football injury.

Checking deer here were: Saturday: Lawrence Rouse of O'Neill, Arden Laursen of O'Neill, Rex Young of Omaha, Orville Miller of O'Neill, George Eickhoff of O'Neill, Ronald Jones of Stuart, William White of O'Neill, Dale Gilbert of Stuart, Otto Terrill of Page, Byron Grenier of O'Neill, Bruce McElhenny of Lincoln.

Sunday: Larry Root of Atkinson, Donald Burival of O'Neill, Ray Jensen of Omaha, Kenneth Baumfalk of Lincoln, Lavern Stevens of O'Neill, Floyd Belik of Page, James Rador of Omaha, Elwyn Grutsch of O'Neill.

Monday: Raymond Revell of O'Neill, Wayne Root of Atkinson.

John Andrus of Valentine, Robert Papeheimer of O'Neill, Merle Farrier of O'Neill, George Mellor of Spencer, Marlin Miller of O'Neill, Ray Fernau of Spencer, Don Fernau of Spencer, Lyle Wells of Redbird, Roman Phillips of O'Neill, Joe Grutsch of O'Neill, Robert Nelson of Omaha, Dewayne Anson of O'Neill, Arthur Humpal of Atkinson, Donald Borg of O'Neill, Max Grenier of O'Neill, Ray Shearer of Stuart.

Tuesday: Norman Kleeb of Broken Bow, Clyde McKenzie, jr., of O'Neill, Vern Wrede of O'Neill, Junior Adamson of O'Neill, Keith Kennedy of Page, Edwin Thorin of O'Neill.

Wednesday: John Cleary of O'Neill, Cecil Grenier of O'Neill, Joe Prochaska of Alba, Eugene Koenig of Ewing, Gordon Drayton of Orchard, Dale McCumber of Omaha, Albin Saffer of Omaha.

## Lynch, Lawrence Next for Cardinals

The St. Mary's academy Cardinals will hit the road Friday afternoon for a game with the Lynch Tigers—a game that will decide the Niobrara Valley eighth-man league title.

SMA owns a 5-0 record at the top but Lynch has a 4-1 record. A Lynch win would produce a three-way tie with Butte, SMA and Lynch.

But the Cardinals will be entering the game a heavy favorite although Lynch has a sophomore, Al Brady, who has run wild all season. Up front the Tigers boast Jim Soulek, 190-pound end; Vic Pickering, 182-pound guard, and M. Barnes, 181-pound center. Only three teams have been able to score more than once against Lynch.

Gene Turner and Larry Wanser have returned to the Cardinal fold after midseason injuries.

Next Tuesday the Cardinals will face the Lawrence Panthers at Lawrence in a holiday game. Unbeaten Lawrence is ranked number one in eight-man circles by the Omaha World-Herald; St. Mary's, fifth.

Lawrence is situated south of Hastings.

## Holt Rural Teachers Schedule Meeting

All members are urged to attend the first meeting of the Holt County Rural Teachers association which will be held Monday, November 10.

The meeting will begin promptly at 7:30 p.m., in the band room of the O'Neill public school and will close at 9 p.m.

A talk on Alaska will be given by a guest speaker. There will also be a panel on "Alaska, Our 49th State" presented. Lunch will be served after the meeting.

## STEER FOUND

EWING—A May truck from Valentine had an accident between Ewing and Clearwater. One steer was hurt and had to be killed. Another steer disappeared from the wreck scene near the Eddie Shrader place and was located the following day.

## MARRIAGE LICENSES

Max Wayne Stalup, 26, of Casper, Wyo., and Donna Winnifred Stalup, 24, of Casper, Wyo., on November 1.

Carlyle David Strong, 19, of O'Neill and Sharon Kay Niemand, 15, of Inman on November 1.

Try Frontier want ads.

**Ponton Insurance**  
Insurance of All Kinds and Bonds  
FLORENCE PONTON, Prop.  
Phone 106 Golden Bldg.

**Electric Motors**  
Rewinding—Rebuilding  
Call 243-W—24-hr. Service  
**Northwest Electric**  
O'Neill

## Brooks Surprises Governor Anderson

BUTTE — Boyd county voters, Tuesday gave U.S. Sen. Roman Hruska, republican incumbent, a substantial margin over challenger, Frank B. Morrison, democrat.

They favored Ralph G. Brooks, democrat, 941-836, over Gov. Victor Anderson, republican, and gave Demo Frank Sorrell 832 votes compared to GOP incumbent Dwight W. Burney's 796 for lieutenant-governor.

GOP candidates on other state tickets fared better than their demo opponents except for J. C. Reynolds' demo, who defeated incumbent Joseph J. Brown, GOP incumbent, 783-749, for the railway commission.

Boyd voters wanted A. L. Miller, GOP congressman, returned to the house in a 919-781 race with Donald McKinley.

John P. Classen, former county judge who is serving by appointment, was easy victor in a three-way petition race for the judge's office. Classen received 983 votes; Charles E. Putnam, 631; S. J. Reinherz, 173.

Claude Collins, GOP incumbent sheriff, received 1,290 votes compared to 554 given Harold J. Look, democratic challenger.

Loris H. Anderson, republican incumbent assessor, was defeated by Lee M. Mathre, 952-857.

The figures are unofficial totals for all 11 precincts.

## Josten, Stonebraker Antelope Winners

NELIGH—There was heavy voting Tuesday in Antelope county. Voters gave republican incumbents a substantial lead over democratic contenders in all offices except the Third district congressional race and the state treasurer race.

Antelope voters gave Brock, democrat, candidate for congress, a three hundred vote margin—1,911-1,655 for Robert D. Harrison, republican incumbent. J. Monroe Bixler, republican, received 1,747 or state treasurer, outdistancing Richard R. Larsen, democrat, 1,401.

The big interest in Antelope county centered in the legislative race in which John G. Donner, of Elgin, incumbent, was being challenged by Herman J. Estrom, of Albion. Antelope voted Donner, 2,228, Estrom, 1,173.

In Boone county, the other half of the 27th district, the race was closer.

Antelope voters gave Richard E. Adkins a substantial margin over William Spear for university regent. There were four county races, according to the Antelope county Clerk Lillie Fallesen.

For county superintendent—Fredia Josten, 2,408; Ralph M. Fluett, 1,077.

For clerk of district court—Clinton Stonebraker, democrat, 2,274; Gus Aleck, republican, 1,195.

For county supervisor, district one—Frederick L. Schneck, democrat, 241, victor over Harvey A. Larson, republican, 203.

For county supervisor, district seven, John H. Flaherty, democrat, 397; George A. Ward, 279, republican.

The bingo vote was close—for bingo, 1,594; against, 1,506.

## Rock Goes GOP; Voting Light

BASSETT — Voting was not heavy in Rock county in Tuesday's general election and the county voted solidly republican. Only two-thirds of the voters in Bassett turned out compared to the voting total of two years ago.

Rock countyans voted like this: U.S. senate—Hruska, 621; Morrison, 305. Governor—Anderson, 632; Brooks, 340. Lieutenant-governor—Burney, 587; Sorrell, 271. Secretary-of-state—Marsh, 714; Foster, 223.

State auditor—Johnson, 604; Kelly, 238. State treasurer—Bixler, 548; Larsen, 281. Railway commission—Brown, 511; McReynolds, 316.

Miller received 633 in the congressional race; McGinley, 311.

Here were three county-level races: For sheriff—George A. Ruder, democrat incumbent, 685; Marvin Kreitman, republican, 326. Commissioner of first district—Schubert, republican incumbent, 168; Elbert J. Iverson, demo, 43. Second district—A. O. Gurnsey, republican, 339; H. C. Carr, demo incumbent, 225.

Figures represent unofficial totals on all 14 Rock precincts.

## Garfield Goes to Republicans

BURWELL — George Tuncliff, republican incumbent, defeated George Fleming, candidate by petition, in the race for county treasurer in Garfield county.

W. D. Johnson, democrat incumbent, defeated Trevor Brandenburg, by petition, for county assessor.

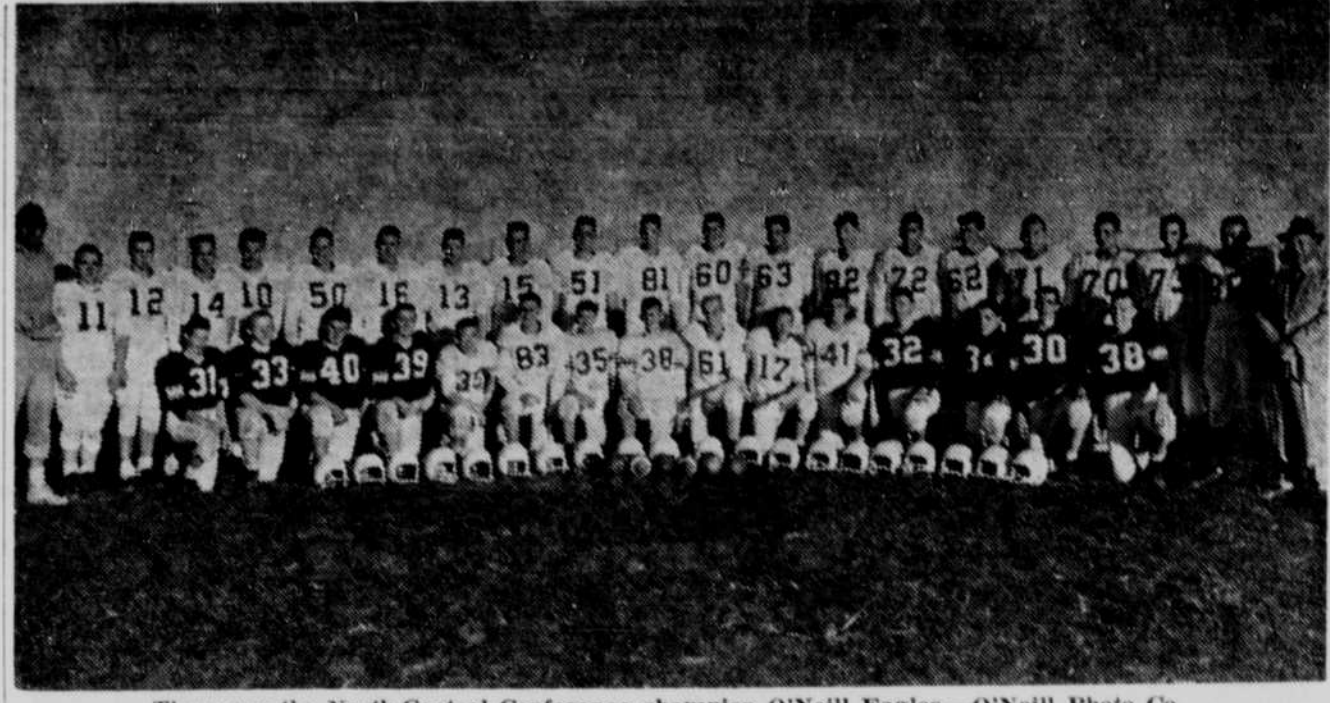
In the Second commissioner district, Marvin Huffman, republican, defeated Ernest Tetschner, democrat.

In the Third district, Archie Dahlstedt, democrat, was victor over Arnold Garska, republican. Dahlstedt was incumbent.

It was light voting for a general election in Garfield county—three hundred below the turnout two years ago. Hruska, Anderson, Miller and other republicans were winners in Garfield.

MNO Meets—  
The MNO extension club held its regular meeting Tuesday, October 28, at the home of Mrs. Arnot Buxton with Mrs. Leonard Davis as cohostess. There were 16 members present. The lesson, "Lamps and Lighting" was presented by Mrs. Eugene Hastraiter.

Mrs. Becker Hostess—  
O'Monde club met Thursday evening with Mrs. Don Becker. Winners were Miss Barbara Birmingham, Mrs. Fred Appleby and Mrs. Ted Kyster. Guests were Miss Birmingham and Mrs. Kyster.



These are the North-Central Conference champion O'Neill Eagles.—O'Neill Photo Co.

## Phone Construction Project Still Short

### Star Group Needing About \$700

Nineteen members of the Chamber of Commerce Monday evening heard James W. Rooney of the Municipal airport authority report on progress to date toward airport development.

He traced the formation of the authority and told steps that have been taken to provide funds for constructing a 4,200-ft runway.

President Clayton Nelson and a delegation from the South Star Telephone corporation explained progress of the organization which represents 32 subscribers. The group hopes to construct a phone line to O'Neill. Subscribers are being assessed four hundred dollars, Nelson said, to finance the project. The community at present is isolated because exchanges formerly linked have converted to dial systems.

Nelson said the company was short about two-thousand-dollars in having enough money to finance the project. He said estimated costs are higher than originally expected. Twenty-four O'Neill firms were canvassed privately last week and the deficit is still about seven-hundred-dollars.

The C of C voted to expend five-hundred-dollars for additional yard decorations for the streets.

A two-day meeting of the Sandhills Cattle association will be held here later and the C of C extended an invitation and offered hospitality services.

## AMELIA NEWS

Mr. and Mrs. Art Doolittle, Pat Kennedy, Bernie Kennedy, Mrs. Della Ernst, Floyd Adams and Sam Gilman were among those attending the funeral of Joe Rotherham in O'Neill Friday morning. He died Monday, October 27, at his home in Burlington, Ia.

Mrs. Dick Porter, Mrs. Blossom Butler and Mrs. George Withers were in O'Neill Tuesday, October 28, where Mrs. Butler was receiving dental care.

Overnight Guests—  
Mr. and Mrs. Estel Warner of Cheyenne were overnight guests Sunday at the J. H. Davis home.

## Compicker Accident at Tilden

Sunday when Mr. and Mrs. Richard Hovey were dinner guests of her sister and husband, Mr. and Mrs. Clifford Pittack, of Tilden, they learned of a compicker accident last Thursday when Frederick Pittack of Tilden lost a hand and three toe nails when he put his foot up to free himself. Unmarried, he is the son of Mr. and Mrs. Herman Pittack of Tilden. After the accident, he walked to a house about a half-mile away. His sister-in-law took him to the Tilden hospital.

Others attending the dinner were Mr. and Mrs. Frank A. Murray and daughter, Miss Etta and son, Francis, a business administration student at the University of Nebraska.

Mrs. Frank Beclaert and Mrs. Marvin Stouffer were hostesses.

## North American Neighbors' Topic

PAGE—Members of the Kings Daughters met at the Wesleyan room of the Methodist church Monday evening for the November session. Mrs. Frank Cronk had the devotional period and Mrs. Norman Trowbridge presented the lesson on "Our North American Neighbors."

Mrs. Frank Beclaert and Mrs. Marvin Stouffer were hostesses.

## GOOD HATS deserve factory rebuilding!

Cleaned, blocked, re-styled with new bands, bindings and leathers with postage paid back to you . . . for only —

**\$4**  
Hats of Distinction  
Made to Order  
Styled to your individual measurements  
**\$10 to \$100**  
(Style folder on request)

**Cy Langdale**  
CUSTOM HATTER  
Box 869 Norfolk, Nebr.

Every one of these Ford Dealer

**USED CARS**  
is clean and classy . . . loaded with extras!

**1951 Mercury**  
2-DOOR, radio, heater, overdrive. Real clean.  
**\$350.00**

**1950 Chevrolet**  
2-DOOR deluxe, radio, heater, new seat covers, runs like new.  
**\$250.00**

**1952 Chevrolet**  
½-TON PICKUP, Radio, heater. Just had a valve job.  
**\$650.00**

**1956 Ford Fairlane**  
4-DOOR, 8-cylinder, heater, overdrive. Looks like new.

**1957 Ford Fairlane**  
500, 4-DOOR, 8-cylinder, Fordomatic, radio heater, tu-tone and white side walls, low mileage.

**1957 Ford**  
2-DOOR Ranch wagon. New tires. A real buy.

**1955 Ford Fairlane**  
4-DOOR, radio, Fordomatic, motor reconditioned.

**1958 Ford Fairlane**  
500, 4-DOOR, demonstrator, 8,000 miles, 300 h.p., Fordomatic, power steering, power brakes, tinted glass, tu-tone paint, white side walls

More to choose from!

**Lohaus Motor Co.**  
— O'NEILL —

**Ray Lawrence**  
O'NEILL — PHONE 274  
Dealer of Nixon & Co.  
F-E-E-D-S  
General Livestock Hauling

**BEAUTYLAND**  
Beauty Salon  
Phone 565 for appointment  
Located across street from bakery. Closed every Monday morning.

**O'NEILL TRANSFER**  
JOHN J. TURNER, Prop.  
Call Us for Prompt, Efficient Service  
DAILY direct service to and from Omaha  
Pick up & door-to-door Delivery in O'Neill

Also: Emmet, Atkinson, Stuart, Bassett, Newport and Springview  
Moving our specialty — anywhere in Nebraska (U. S. and Canada by agents interline)

If You've Got It — A Truck Brought It  
Your business will be appreciated  
Patronize a Home Owned and Operated Firm  
Phone: O'Neill 578 Omaha AT-0600

# Forsythe Land

This real property was owned by the late Alex Forsythe and is being offered for sale by the Executor of his estate at private sale:

The South Half of Section 5, Northwest quarter of Section 8, Township 31, Range 14;

The Southeast quarter of the Northwest quarter, the Southwest quarter of the Northeast quarter, the East half of the Southwest quarter, the West half and the Southeast quarter of the Southeast quarter of Section 27, the Northeast quarter of the Northeast quarter of Section 34, Township 32, Range 14.

The land will be offered as a unit of 800 acres, more or less; or an improved 320 acres, 80 acres upland hay and 80 acres idle land, more or less; or improved 320 acres, more or less; or 80 acres upland hay and 80 acres idle land, more or less; and 320 acres hay and pasture, more or less. The land will be sold whichever way it brings the most money, as a unit or in separate tracts.

The improved 320 acres has a good house 36' x 26' (pitcher pump in kitchen), with oil storage tank; good barn 36' x 24' with 1 lean-to 24' x 10' and another 24' x 16'; double crib and granary 29' x 24'; cattle and machine shed 60' x 18' with lean-to 18' x 10'; stock well and electric pump at buildings; 2/10 of a mile heavy windbreak on North and West. This half section pastured 35 cows, 2 heifers, 1 bull and 35 calves this summer. Small field of alfalfa and small meadow cut 11 tons hay. Served by REA. A share in the Celia Independent Telephone Co. goes with this tract. The 80 acres of upland hay cut 31 tons this year. The idle ground was not used.

The 320 acre unimproved hay and pasture tract cut about 120 tons of hay. Most of this meadow cuts hay with considerable clover in it. There were 80 heifers in the pasture for a month and a half and 50 cows and calves on the aftergrowth and pasture for a month.

The Executor invites bids from all persons interested in buying this place or any part of it. All bids are subject to the approval and acceptance of the Executor and all others whose approval may be required.

Property will be sold for cash. If prospective buyers desire time, loan arrangements will have to be made by them elsewhere.

Terms 25% down when sale is confirmed, balance on March 1, 1959, when transaction is completed.

**James W. Rooney, Executor**  
Box 550  
O'Neill, Nebraska

**Phone Construction Project Still Short**  
Star Group Needing About \$700

**Compicker Accident at Tilden**

**North American Neighbors' Topic**

**GOOD HATS deserve factory rebuilding!**

**AMELIA NEWS**

**Overnight Guests**

**Rock Goes GOP; Voting Light**

**FRIENDLY FIXIN'S for Snacks 'n Get-Togethers!**

**ALA MONITA SANDWICH**

**Garfield Goes to Republicans**

**Nebraska Farmer Says: "d-CON CLEANED UP MY RAT-INFESTED FARM!"**

**NEBRASKA DIVISION United States Brewers Foundation**

**STEEER FOUND**

**MARRIAGE LICENSES**

**Ponton Insurance**

**Electric Motors**

**Northwest Electric**

**USED CARS**

**1951 Mercury**

**1950 Chevrolet**

**1952 Chevrolet**

**1956 Ford Fairlane**

**1957 Ford Fairlane**

**1957 Ford**

**1955 Ford Fairlane**

**1958 Ford Fairlane**

**Lohaus Motor Co.**