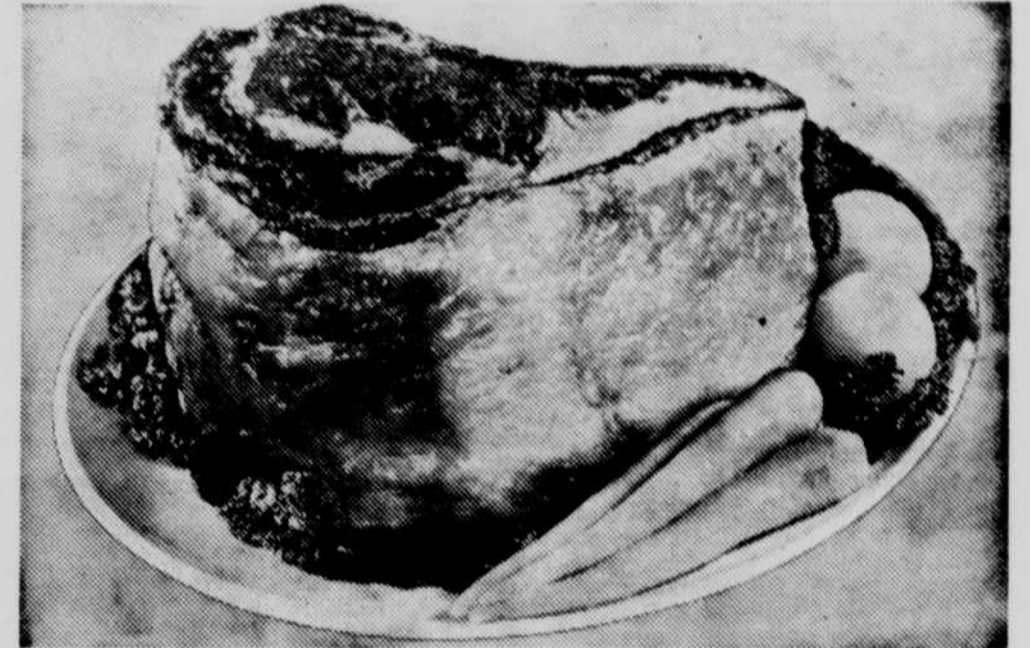
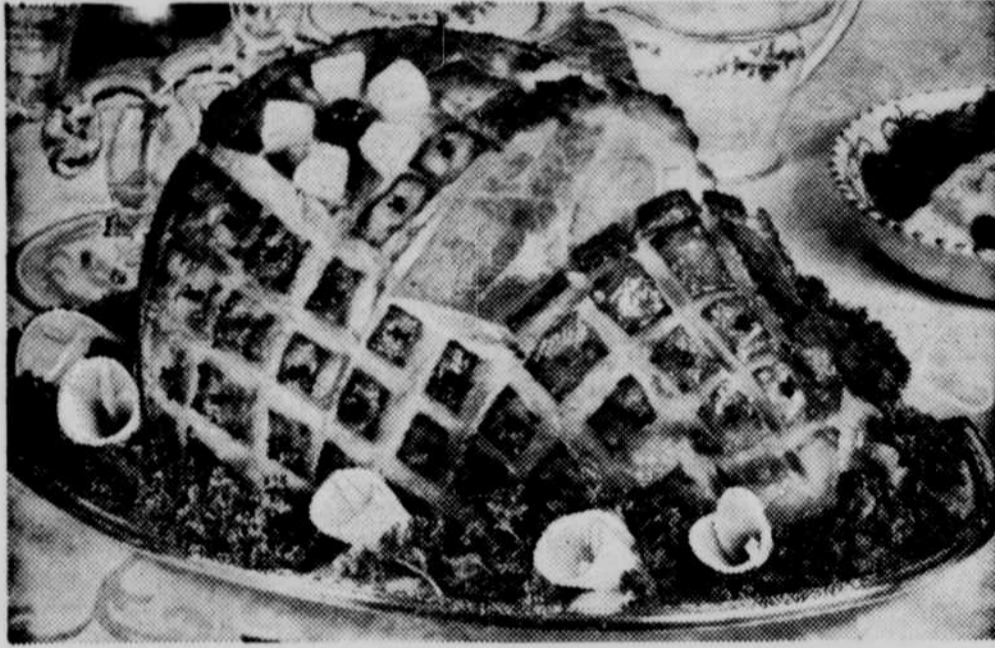


at **SAFEWAY**—

# Fine Foods for Easter



**HAMS**  
First quality brands,  
Ready-to-Eat,  
14 to 16-lb. Avg.  
Half or Whole  
**Lb. 59<sup>c</sup>**

**Chickens**  
Fresh, plump,  
Fryers  
Whole  
**Lb. 39<sup>c</sup>**  
Cut-up  
**Lb. 43<sup>c</sup>**

**Rib Roast**  
U.S.D.A. Choice  
Grade Beef, 7-inch  
standing cut  
**Lb. 79<sup>c</sup>**

Sauce CRANBERRY; 2 No. 303 Cans 45c  
Ocean Spray  
Cocktail FRUIT, Town House; choice 3 No. 2 1/2 Cans \$1.00  
Pie Filling Wilderness; Apple, No. 2 ready to pour into crust Can 33c  
Syrup CHOCOLATE, Hershey's; delicious 2 16-oz. Cans 49c

Bread White or Wheat; Mrs. Wright's; fresh, baked daily 20-oz. Loaf 19c  
Gelatin Jell Well 2 pkg. 15c  
Cookies MIXED; Melrose; Big Family Assortment 24-oz. Pkg. 49c  
Orange Base Real Gold; mix in water 2 6-oz. Cans 39c

Wafers Waverly; Nabisco; crisp, crunchy cookies 11 1/4-oz. Pkg. 31c  
Cake Mixes Betty Crocker; white, choc., yellow 20-oz. Pkg. 35c  
Coffee Edwards; wonderfully rich, more flavor lift per cup 1-lb. Can 85c  
Treats Armour; Ready to Eat; serve with eggs 12-oz. Can 49c

Hot Roll Mix Pillsbury; for Easter dinner 14 1/2-oz. Pkg. 29c  
Fresh Butter Harding's Quartered 1-Lb. 69c  
Tomato Soup Heinz; Cond. 4 10 1/2-oz. Cans 49c  
Dressing SALAD; Wishbone; Italian Style 8-oz. Bottle 39c

**Cakes — ANGEL FOOD**  
Peter Pan, (Reg. Price 55c; Save 16c a cake) 16-oz. Cake **39<sup>c</sup>**  
**Coffee** Nob Hill; rich, 1-lb. Bag **77<sup>c</sup>** Airway; mild coffee, 1-lb. Bag **73<sup>c</sup>**  
**Peas** Gardenside; No. 303 Standard Quality 1 Can **10<sup>c</sup>** Town House; No. 303 Fancy Quality 2 Cans **29<sup>c</sup>**

Your Easter is bound to be more enjoyable with farm fresh

**EGGS**

Large Grade A Doz. **45<sup>c</sup>**  
Med. Grade A Doz. **43<sup>c</sup>**

**Safeway's your BEST place to Save!**  
... because weekly specials mean "bonus" savings ... so shop Safeway this week and every week ... then watch your savings grow!

**Cake Mixes**  
PILLSBURY 4 Pkgs. **95<sup>c</sup>**  
White  
Chocolate  
Orange  
Spice  
Caramel  
Yellow

**Sugar**  
Powdered or Brown  
2 1-Lb. Ctns. **25<sup>c</sup>**

**Green Beans**  
Gardenside Cut 303 Can **10<sup>c</sup>**  
Case \$2.39

**Shortening**  
Royal Satin 3 Lb. Can **79<sup>c</sup>**

Brighten Your Easter Table with Safeway's Fresh Fruits and Vegetables

**ASPARAGUS**  
Put springtime on your Easter table with a dish of fresh, tender Asparagus ... from Safeway!

**29<sup>c</sup> lb.**

Head Lettuce Fresh, crisp, clean, trimmed Lb. 19c  
Cauliflower Tender texture of white, pearly curds Lb. 19c  
Green Onions young and tender, mild 2 Bchs. 15c  
Golden Yams Rich, smooth, uniform size Lb. 19c  
Grapefruit Pink, seedless, sweet, juicy, tart Lb. 12c  
Pineapple Rich, delicious, brimful of flavor 3 for \$1.00

Special "Get Acquainted" Offer

Skylark; 11-oz. Brown 'n Serve — **Dinner Rolls**  
(Reg. Price 28c; Save 9c a Package)

— or Curtsy; 8-oz. Almond **Coffee Cake**  
(Reg. Price 24c; Save 5c a Package)

**ONLY 19<sup>c</sup> each**

Closed Good Friday 3:00 to 5:00 p. m. — Open 5:00 to 8:30 p. m.  
RIGHT RESERVED TO LIMIT QUANTITIES

**SAFEWAY**

Prices Effective thru Saturday, April 5, in O'Neill