

Cards Convincingly Whip Eagles, 62-43

Inman Triumphs in Three Outings

Brunswick, St. Joe Bow to Tigers

INMAN—Ned Kelley's steady shooting lead the Inman high Tigers to three wins during the week. Against Brunswick, he poured in 17 points while against St. Joseph's of Atkinson he netted 16, and against Clearwater he scored in 26.

Inman defeated Brunswick, 86-35, and downed the Josies, 57-30. On Tuesday night at Clearwater they knocked off a hot Clearwater club, 58-37.

Brunswick had a good first half, but wilted under the shooting of Ned Kelley, Neal Kelley and Dick Appleby. Larry Pachop led the losers with 14 points.

At Atkinson Friday night Inman rushed to a 31-12 half-time score and then coasted to an easy triumph. Along with Kelley, Sam Watson and Dick Appleby also scored 11 and 8 points respectively. Ray Schaffer was the main cog in St. Joe's line-up, scoring 18 points and grabbing most of the rebounds.

Coach Bill Miller's Tigers encountered stubborn opposition at Clearwater, leading 25-18 at half-time. But in the third the Inman kids poured in 22 points and breezed the rest of the distance.

Watson's floor work was excellent at Clearwater. Neal Kelley scored 11.

Kirschmeier led Clearwater with 14 points and was a constant threat.

Miller's crew, by virtue of the fat week, sounded an alarm they'll be tough to reckon with in class D circles and will be equally hard to handle for any class C or B competition in these parts.

The Inman volleyball team met Brunswick on the home court Tuesday, December 3, and won 49-25. Lois Morsbach was high server for Inman with 12 points. Janis Forbes served six for the losers. The Inman girls met Clearwater Tuesday, December 10, and will play Page Friday, December 13.

Valentine Downs Atkinson, 43-37

ATKINSON — The Valentine high Badgers Tuesday night came from behind in the second half to hand the Atkinson Balers a 43-37 setback—the first loss of the season for the crew coached by Marv Bosen. It was a North-Central conference game and there is strong suspect the conference title hinged on Tuesday's game.

Atkinson led 10-6 at the quarter, and 19-15 at intermission. Valentine scored 18 points in the third period to take a 33-26 lead. Atkinson hit 11 points and Valentine 10 in the final quarter.

Duane Humphrey swished in 20 points for Atkinson and Nathan Swinford led Valentine with 15. Valentine 6 9 18 10-43 Atkinson 10 9 7 11-37

The Atkinson girls' volleyball team defeated the Valentine girls two-out-of-three sets.

Frontier for printing.

Coach Don Templemeyer's St. Mary's academy Cardinals held the upper hand virtually all the way Friday night in vanquishing their across-the-street intricacy rivals, the O'Neill high Eagles.

The Cards won 62-43 after building a 17-8 first period lead and enjoying a 31-20 half-time margin. It was the Cards' second hard-wood outing and the first for Coach Bill Edwards' Blues, who were sluggish and not playing the aggressive type of ball the old professor had expected of his kids.

Larry Tomlinson, junior gem at the academy, was getting more than his share of rebounds off both boards, turned in a swell floor game and dumped 21 points for the winners. Gary Holly, elusive and durable SMA forward, likewise potted 21 points. Larry Oetter's 13 were best for losers.

The parochial school established hangboard control, largely on Tomlinson's efforts, and that generally spelled out the difference.

Larry Mudloff paced the academy reserves in a 38-33 win over the Eagle seconds. Bob Eby hooked 14 for O'Neill; Mudloff 12 for SMA.

The house was filled to capacity. Boxscore of main event:

SMA (62)	fg	ft	pf	tp
Tomlinson	9	3	3	21
Holly	10	1	1	21
McGinn	2	4	3	8
Stevens	3	0	3	6
Craig	2	1	3	5
Shullivan	0	1	0	0
Donohoe, L.	0	0	2	0
Schneider	0	0	0	0
Clark	0	0	1	0
Belina	0	0	0	0
Froelich	0	0	0	0
Donohoe, T.	0	0	0	0
Totals	26	10	16	62

O'Neill (43)

Smith	2	5	4	9
Parks	1	2	4	4
Larson	2	0	2	4
Eby, Fred	1	0	3	2
Schaff	1	2	1	4
Oetter	5	3	3	13
Eby, Bill	0	0	0	0
Dexter	2	1	1	5
Strong	1	0	0	2
Totals	13	13	19	43

St. Mary's 69; Naper 34

With Larry Tomlinson leading the way, the academy Cards racked up victory number 2 as they easily handled the Naper Bears, 69-34, in a Monday night contest on the O'Neill court. Tomlinson set two new SMA records as he hit 14 fielders and two charity tosses for 30 points—one better than the 29 established by Dave Schaffer against Lynch in 1956. Larry's 14 fielders also bettered the 12 tallied by Schaffer against Inman in 1956.

Gale Stevens found the range for 13 and played a fine floor game. He and Gary Holly played the role of "feed men" during the closing period to aid Tomlinson in his effort to better the SMA record. Steady rebounding by Larry Donohoe and Lambert Belina enabled the Cards to control the defensive boards. With the outcome never in doubt, the Cardinal reserves were used freely through out the contest with all hands giving a good accounting.

Boxscore:

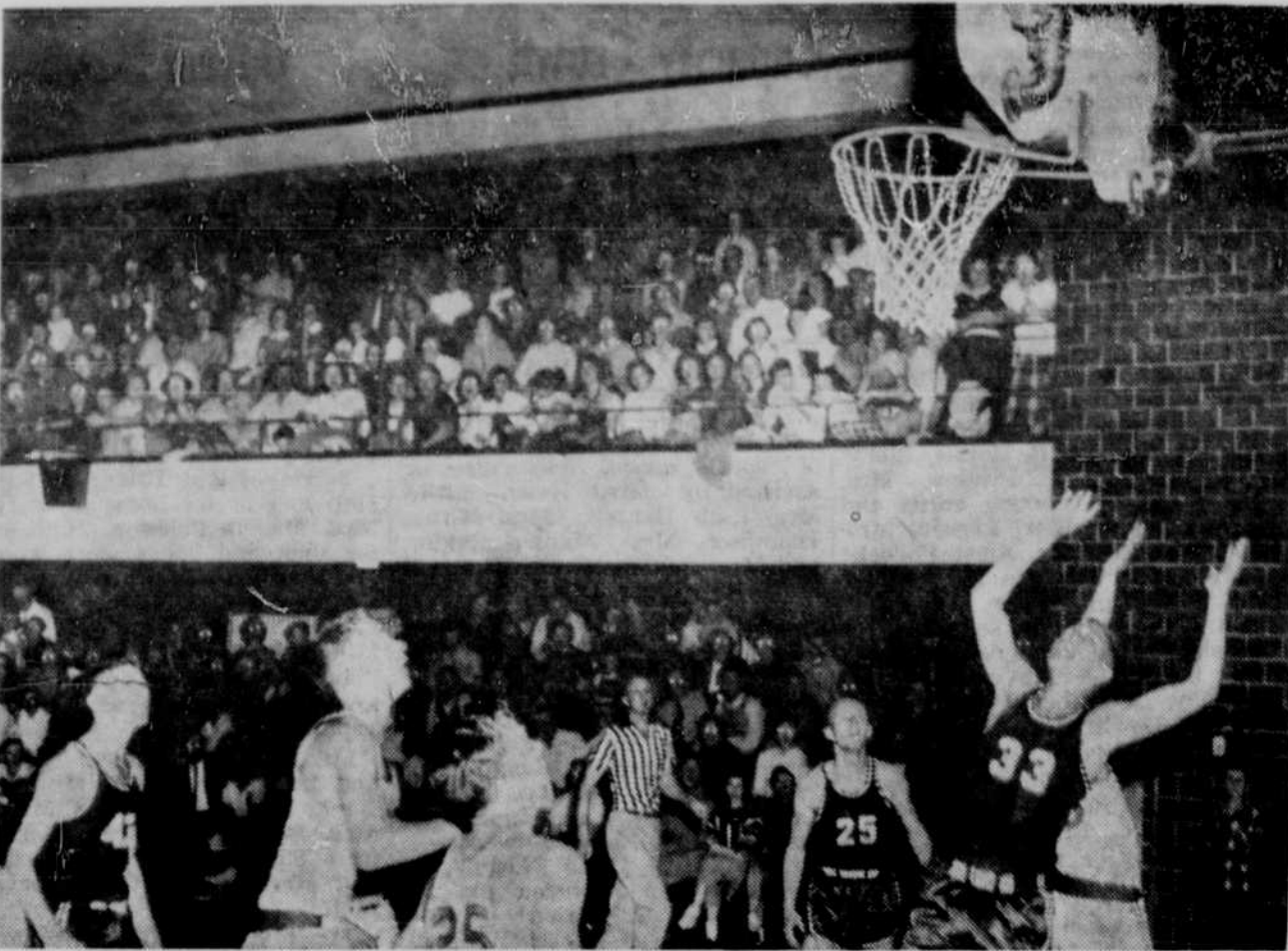
SMA (69)	fg	ft	pf	tp
Tomlinson	14	2	4	30
Holly	4	3	5	11

Stuart Here Friday; Eagles to Hit Road

In upcoming cage games, the St. Mary's academy Cardinals will entertain the Stuart high Broncos here Friday night. Meanwhile, the O'Neill high Eagles will take to the road and face the Ainsworth Bulldogs on the cavernous Ainsworth court.

The Atkinson Balers will go to Springfield the same evening.

Earlier Grid Practice Okayed by Group—North-Central Nebraska football teams will be permitted to start grid practice one week earlier than other schools in the state, a compensation for weather. That was decided Friday by the Nebraska High School activities association delegate assembly.



Two points for St. Mary's. Cards in work: Bill Craig (43), Jim McGinn (25), Gary Holly (33), who laid the ball in the bucket. Eagles in white: Ronnie Smith (25).—The Frontier Photo.

Stevens	6	1	2	13
Donohoe, L.	1	1	0	3
Belina	3	1	2	7
Clark	1	1	0	3
Schneider	0	0	1	0
Donohoe, T.	0	2	0	2
Froelich	0	0	1	0
Totals	29	11	15	69

The academy reserves posted their third straight victory without a defeat by a 60-14 margin as Chuck Froelich notched 12 and Larry Mudloff followed with 11.

EWING — While their coach was under the knife in St. Anthony's hospital at O'Neill for an emergency appendectomy, the Ewing high Tigers dropped a heartbreaker Tuesday night to the visiting Newman Grove team. It was an overtime affair, Newman Grove winning, 42-40.

Sonny Carl hit 28 points for the winners and for a time it appeared the Tigers were going to conquer this one for their stricken coach. Nelson sparkled for the winners.

Supt. Lewis Carter, who tutored athletics up until a few years back, directed the team. The Ewing reserves won, 25-23, also in an overtime.

Coach Fritz Reifert was taken to the hospital late Tuesday for the operation. His condition is good.

The Ewing team defeated Page, 60-41, Friday night after leading, 24-19, at halftime. Sonny Carl grabbed 22 points for Ewing. Dick Clark tallied 18 for Page. The Page reserves, however, dumped the Ewing seconds, 28-17.

1958-'59 Concert Drive Is Talked

The O'Neill Community Concerts association officers and directors, in session Monday evening, decided to conduct the 1958-'59 membership drive next spring. Instead of in the fall.

The drive will be kicked off with a tea on Sunday afternoon, April 20. That evening the Theater Men will be entertaining in the final concert of the 1957-'58 concert season.

Details of the spring campaign will be announced at a later date. President, F. E. Parkins said.

Todd Duncan will be here Monday, February 9, to open this season's concerts; Pat and Bill Medley will appear Wednesday, March 19, and the Theater Men will climax the current season with the April 20 appearance.

Sprains Ankles

LYNCH — Herb Mannen of Lynch sprained both ankles Wednesday, December 4, in a one-car accident near the Andy Classen place. An oncoming car failed to dim its lights, Mannen said, and Mannen took the ditch.

Auction Calendar

Friday, January 3: Quarter section of land belonging to the A. V. Forsberg estate, at farm; Col. Ed Thorin of O'Neill, auctioneer-estate broker. (Details next issue).

SPENCER—The Spencer Pirates Friday night rocked the Lynch Eagles, 45-35, in Niobrara Valley conference cage game.

Coach Under Knife; Tigers Drop Thriller

EWING — While their coach was under the knife in St. Anthony's hospital at O'Neill for an emergency appendectomy, the Ewing high Tigers dropped a heartbreaker Tuesday night to the visiting Newman Grove team. It was an overtime affair, Newman Grove winning, 42-40.

Sonny Carl hit 28 points for the winners and for a time it appeared the Tigers were going to conquer this one for their stricken coach. Nelson sparkled for the winners.

Supt. Lewis Carter, who tutored athletics up until a few years back, directed the team. The Ewing reserves won, 25-23, also in an overtime.

Coach Fritz Reifert was taken to the hospital late Tuesday for the operation. His condition is good.

The Ewing team defeated Page, 60-41, Friday night after leading, 24-19, at halftime. Sonny Carl grabbed 22 points for Ewing. Dick Clark tallied 18 for Page. The Page reserves, however, dumped the Ewing seconds, 28-17.

1958-'59 Concert Drive Is Talked

The O'Neill Community Concerts association officers and directors, in session Monday evening, decided to conduct the 1958-'59 membership drive next spring. Instead of in the fall.

The drive will be kicked off with a tea on Sunday afternoon, April 20. That evening the Theater Men will be entertaining in the final concert of the 1957-'58 concert season.

Details of the spring campaign will be announced at a later date. President, F. E. Parkins said.

Todd Duncan will be here Monday, February 9, to open this season's concerts; Pat and Bill Medley will appear Wednesday, March 19, and the Theater Men will climax the current season with the April 20 appearance.

Sprains Ankles

LYNCH — Herb Mannen of Lynch sprained both ankles Wednesday, December 4, in a one-car accident near the Andy Classen place. An oncoming car failed to dim its lights, Mannen said, and Mannen took the ditch.

Auction Calendar

Friday, January 3: Quarter section of land belonging to the A. V. Forsberg estate, at farm; Col. Ed Thorin of O'Neill, auctioneer-estate broker. (Details next issue).

SPENCER—The Spencer Pirates Friday night rocked the Lynch Eagles, 45-35, in Niobrara Valley conference cage game.

Sandhills Scout Workers to Omaha

A group of Sandhills district Boy Scout workers went to Omaha Saturday in a special Valentine bus to see a "scouting in action show" in connection with a Scout jubilee.

Aboard the bus were Robert Ireland and Roy Buckles of Merriam; Leonard Alder of Valentine; Harold Blesh of Wood Lake; Harry DeVillbiss of Ainsworth; C. W. Ripley and Ray Meith of Springfield; Arthur Weber, Otto Welfring, Clint Davis and Larry Martin, all of Bassett; Rusty Davis and Harold Jaquot of Long Pine; Richard Scheerer, Ira Ready and Lawrence Hamik, all of Stuart; Bill Cousins, Donald Maw, Robert Milner and Albert Stoffer, all of O'Neill; Elmer Trowbridge of Page; and John Drayton of Wood Lake, who was host at a 5 o'clock dinner Saturday evening at Omaha and arranged the chartered bus.

The scouting show consisted of two hundred separate booths and displays.

Three-Part Yule Program Planned

St. Mary's academy students will present a three-part Christmas program on Sunday and Monday, December 15-16.

The first portion will be a cantata, "Carols of Christmas," sung by the girls' glee club.

The speech class will present a one-act play, "The Allen Star," and a set of tableaux titled, "The Angel and the Shepherds," will feature 88 graders as angels.

The grade school will give a Christmas program Thursday, December 19. Each grade will have a selection on the program.

Richard Janssen Dies at Notfolk

SPENCER — Richard Janssen, who had been ill for sometime, died early Wednesday December 11, in a Norfolk hospital.

Evert Janssen of Spencer is a brother.

The Jones funeral home will be in charge of funeral arrangements, which are not yet complete.

SPENCER—The Spencer Pirates Friday night rocked the Lynch Eagles, 45-35, in Niobrara Valley conference cage game.

Friday, January 3: Quarter section of land belonging to the A. V. Forsberg estate, at farm; Col. Ed Thorin of O'Neill, auctioneer-estate broker. (Details next issue).

SPENCER—The Spencer Pirates Friday night rocked the Lynch Eagles, 45-35, in Niobrara Valley conference cage game.



Scout workers . . . Omaha.—The Frontier Photo.



A passenger car belonging to Hometown Motors collided with a truck loaded with baled hay Wednesday noon at the cemetery corner. Driver of the car, Dale Hewitt, suffered a fractured rib.—The Frontier Photo.

Mrs. Bell Wins Door Prize

CHAMBERS — The Beautiful Valley Garden club met Tuesday December 3, at the home of Mrs. Genevieve Bell with Mrs. C. E. Tibbets hostess. Eighteen members and four visitors and one child were present.

A regular business meeting was conducted. Mrs. Kenneth Adams gave the legend of the Christmas rose. This being the Christmas party, a program was presented with each member participating. Gifts were exchanged and mystery sisters revealed. Mrs. Tibbets showed articles she had brought back from Arizona.

Mrs. Genevieve Bell received the door prize. Lunch was served by the hostess.

Next meeting will be January 7 with Mrs. Charles Spann.

Harry Carney Burial at Niobrara

NIORARA — Funeral services for Harry Carney, 52, a disabled Niobrara man, were conducted at 10 a.m., Monday, December 9, at the Catholic mission church here. Mr. Carney died Friday, December 6, in the Lynch hospital.

Survivors include: Widow and two children.

The Jones funeral home was in charge of arrangements.

Birthday Noted

Mr. and Mrs. R. J. Rhode and Mr. and Mrs. Bernard Rhode and son, Dennis, spent Tuesday afternoon and evening at the home of Mr. and Mrs. Francis Rhode where they enjoyed a six o'clock dinner in honor of the birthday anniversary of Mrs. R. J. Rhode.

CHRISTMAS SPECIAL

RCA WHIRLPOOL PORTABLE DISHWASHER

with set of dishes and a year's supply of soap

For Only \$199.00

SHELHAMER EQUIPMENT CO.

When in Omaha

HOTEL CONANT 200 ROOMS \$2 to \$3

Hewitt Hurt in Car-Truck Smash

Dale Hewitt, 59, of the Hometown Motors firm suffered a broken rib about noon Wednesday in an intersection accident northwest of the city.

Hewitt's car, eastbound on the airport road, pulled onto U.S. highways 20-281 at the cemetery corner and entered into the path of a truck driven by Dean Perry of Emmet.

Hewitt was alone. Perry's wife was with him in the northbound truck loaded with baled hay. The impact caused seven bales of hay to topple from the top of the load.

The right side of the Hewitt machine was damaged and the front of the truck was smashed, requiring a wrecker. The Perrys were unhurt.

Deputy Holt Sheriff James Mullen said damage to both vehicles would total several hundred dollars.

Hewitt, who was not hospitalized, lives at the Golden hotel. He is affiliated with the motor firm.

About \$30 damage was sustained to Howard G. Stab's car when he hit ice on a corner and skidded into a tree in front of Ann Moos residence on West Fremont St. Sunday. Officer Milford Coats investigated the accident.

Wintertime Punch . . . Serve It Piping!



This hot fruit punch will chase away the chills on a wintery night. It's a perfect after-skating or skiing drink, wonderful to serve in front of a log-burning fire.

The base of this cherry drink is hot tea, spiced with cloves and allspice, and sweetened with Sucaryl. To the sweetened tea, you add cider (or apple juice), orange juice and lemon juice. And, of course, you serve the drink piping hot, from a brightly polished brass kettle, if you like, or from a tea kettle or canafe.

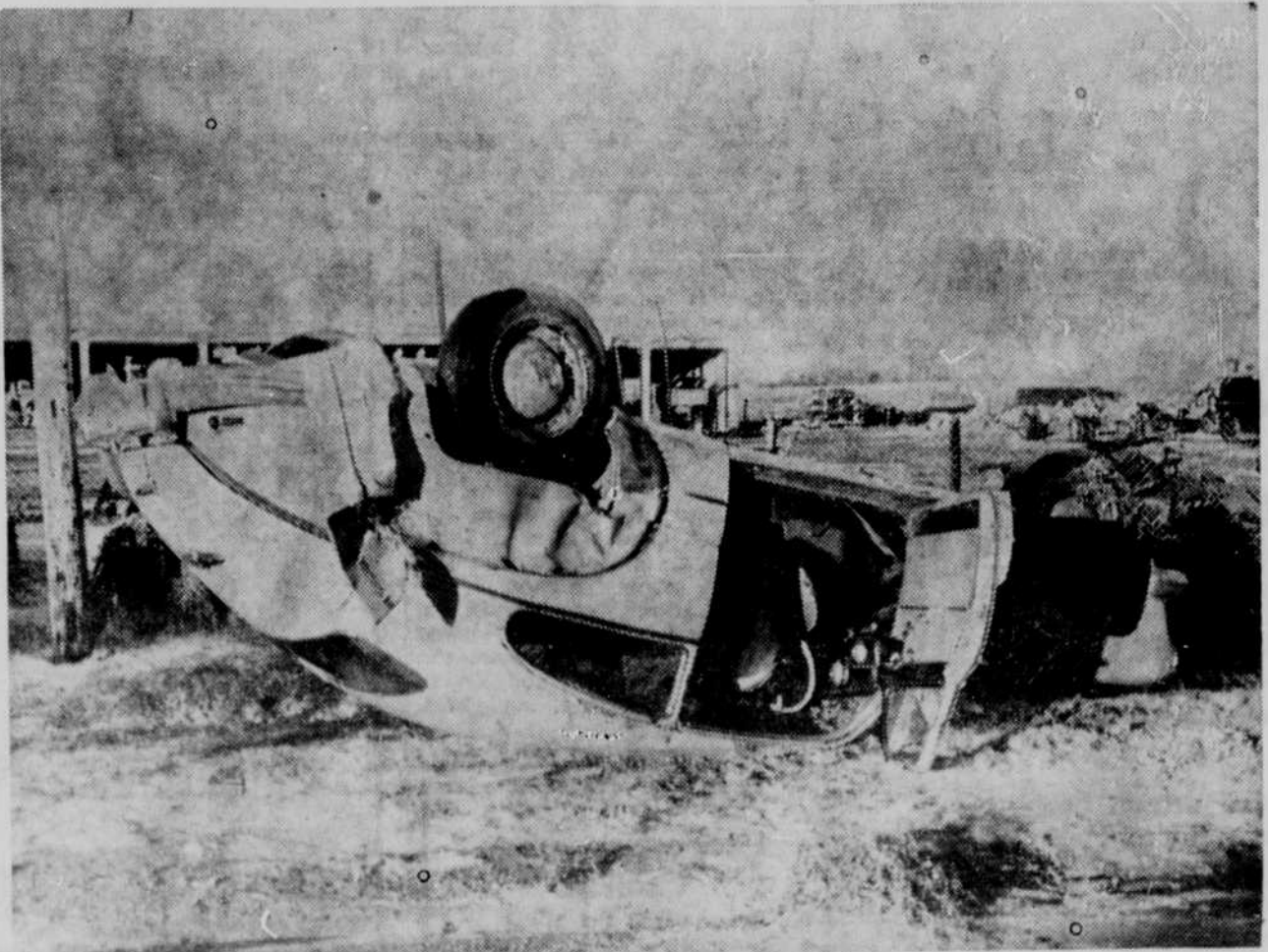
Extra point in favor of this tempting cider punch is that it's low in calories. Reason is that, simply by using the non-caloric sweetener, Sucaryl, rather than sugar, you cut out two-thirds of the total calories normally contained in the drink. Without adding a single calorie, this sweetener gives the punch a delightful, natural-tasting sweetness. It's delicious!

Mulled Cider

4 lemons	2 tablespoons tea
2 cups boiling water	6 whole cloves
8 teaspoons Sucaryl solution	6 whole allspice
or 64 Sucaryl tablets	2 cups orange juice
	2 cups apple juice or cider

Parse peel from lemons and extract juice. To the boiling water, add the peel, Sucaryl, tea and spices; steep 8 minutes. Strain. Combine orange juice and apple juice; heat, but do not boil. Add to the hot tea mixture. Just before serving, add lemon juice. Serve hot.

Makes 7 cups or 12 servings. Each serving contains 45 CALORIES; 0.5 gram protein; 0.2 gram fat; 12 grams carbohydrate. Made with sugar, each serving would contain 131 CALORIES.



Escape Serious Hurts as Car Overturns

Darrel ("Dutch") Strong, 17, and Leroy Knepf, 21, were occupants of this car which overturned about 1:30 a.m. Sunday near the West O'Neill corner on U.S. highways 20-281. Their southbound car struck a sign in the island at the corner, the machine overturned and landed on its

top on the west side of the road where it was viewed by churchgoers. Strong, who was driving, suffered a scratched hand and was hospitalized overnight to determine if there were any other injuries. The youths blamed the icy condition of the highway.—The Frontier Photo.

Elkhorn Valley NATIONAL FARM LOAN ASSN. O'Neill, Nebraska LYLE P. DIERKS, Secretary-Treasurer Member Federal Land Bank System