

Skating in Hanscom Park

Nature has been none too lavish in furnishing places where the boys and girls of this community may enjoy themselves during the winter days and evenings skating. Of course there are the Missouri river and Cut Off lake, but it is seldom the ice on either river or lake is in prime condition for the sport. Besides, skating on these sheets of water is not safe, even during the coldest weather. On both the river and the lake there are numerous air holes through which the skater is in danger of plunging at any time. Aside from the danger, the ice is usually rough and frequently covered with sand and snow.

What nature has failed to do man has accomplished and when properly cared for the little pool in Hanscom park furnishes an ideal place for skating. As everybody here-ways knows, the Hanscom park lake is a gem of its kind. It is located down in the southeast corner of the park, well protected from the winds by the hundreds of huge oaks, elms and other forest trees, scores of which are shown by the accompanying picture, taken soon after the lake froze over this season. The lake is nearly circular and covers a couple of acres in area, and when in good condition its surface is as smooth as glass, not being marred by hill, hummock or crack.

Two years ago the Hanscom park lake was one of the finest skating resorts in the country. That winter the members of the park commission took the matter in hand and flooded the surface twice a week during the cold weather. The total cost of keeping the lake in good condition approximated \$500. Last winter it was allowed to care for itself and as a result after the first fall of snow there was practically no skating. This winter there is a move on foot to make the place more popular than ever.

The park commissioners have their annual meeting about December 27, and at that time if the skaters take interest enough in the matter to be present and present their claims it is more than likely that the members of the board will order the ice flooded at least once and perhaps twice each week.

Superintendent Hunt of the Omaha Water Works company, in discussing the proposition, says: "If the park people want to flood the lake, we will make a very low rate for the water. I think that it can be done for the entire season for less than \$500. We can flood the lake any afternoon during reasonably cold weather and have fine skating for the evening. It is an easy



SKATING AT HANSCOM PARK—MISS MARTHA PARKS—Photo by Louis R. Bostwick.

matter, for all that will have to be done will be to attach a hose to one of the hydrants near the shore of the lake and turn on the water. From one-half to an inch of water twice a week will keep the surface of the lake in the best of condition."

Secretary Bates of the park commission says: "There is no money in the treasury at this time, yet I think that if the people will take the matter up we can squeeze out enough funds to pay for the water, but we must first have some evidence that the young people of Omaha are anxious to have the lake put in condition for skating. They can't stand around and expect the board to take the initiative."

The upper lake in the park is full of water and its surface is pretty smooth, but on this skaters are not allowed, as it is monopolized by the members of the Omaha Curling club, who play their games there every



SKATING AT HANSCOM PARK—CHES-TER P. PEDERSEN—Photo by Louis R. Bostwick.

Saturday. Even if skaters were permitted to use this lake it would be of little value to them as a resort, as it is entirely too small, so that it is skate on the lower lake or not skate.

Whence Mistletoe Comes

Women the world over are interested in the pretty green parasite that adds to the fun and frolic and happiness of the Christmas season.

Mistletoe for centuries has been one of the most important factors in yuletide decorations, its use dating back as far as the days of the Druids. The hanging of the mistletoe on Christmas eve, between 11 and 12 o'clock, in many homes is the beginning of the season's merrymaking. The bough is hung in a place where there will be no obstacle to passing under it, and the penalty for being caught beneath its branches all know.

The mistletoe of the Druids is viscum album. It is a true parasite, existing on the sap of other trees, and never at any time is it in contact with the soil. It grows freely on apple, pear and plum trees; on poplars, thorns, maples and basswood, and rarely on the oak. It is said that the only sacred mistletoe of the Druids was that found upon the oak. The propagation is by the seeds. These are covered with a translucent, gummy substance. They are placed in position by birds, which, in trying to rid their beaks of the sticky seeds, rub them on the bark. The seeds, which are deposited on the east or north side of the trees, grow more rapidly than those to the south or west.

Some idea of the quantity of mistletoe that is used annually in London may be had when it is known that from the two counties of Worcester and Hereford alone more than 100 tons are shipped each season. Much also finds its way from Normandy and from France to the London market. Large quantities are imported yearly to New York, Boston and Philadelphia, and much reaches Chicago.

The mistletoe generally seen in the market here is a cousin to the European species, and is known as phoradendron flavescens. It is smaller, both in berries and leaf. It is found in great quantities in New Jersey and southward through the Carolinas, New Mexico and Indian Territory.

Pointed Paragraphs

Chicago News: Party lines are usually drawn at campaign poetry.

The stage door frequently leads to the divorce court.

Wise is the man who derives happiness from his delusions.

It is human nature to attribute the success of others to chance.

The magazine poet may be equal to his task, but few of his readers are.

The goodness of our intentions never excuses the badness of our actions.

If it takes nine tailors to make a man how many dudes can one tailor turn out?

Some men who pay their bills promptly want considerable credit for it later on.

A first-class bookkeeper is one who can keep the books away from meddlesome creditors.

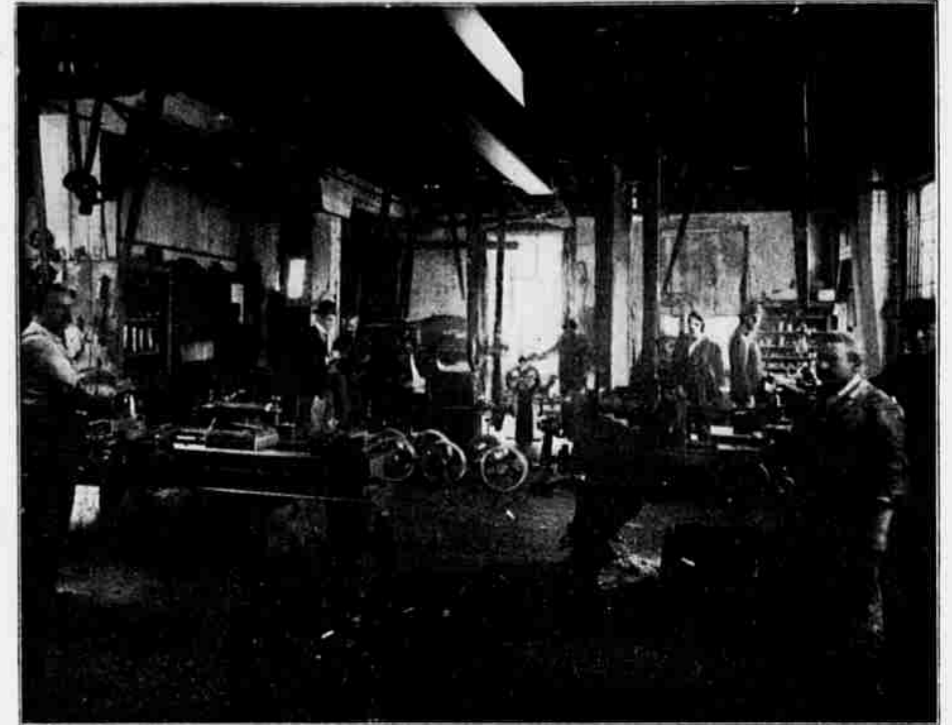
Suspicion sometimes makes a square meal on jealousy—and finds there is nothing left for dessert.

A western clergyman denounces Sunday funerals. Most people are in favor of postponing them indefinitely.

After observing the antics of some folks the theory that man descended from the monkey doesn't seem so ridiculous.

Davis & Cowgill Iron Works

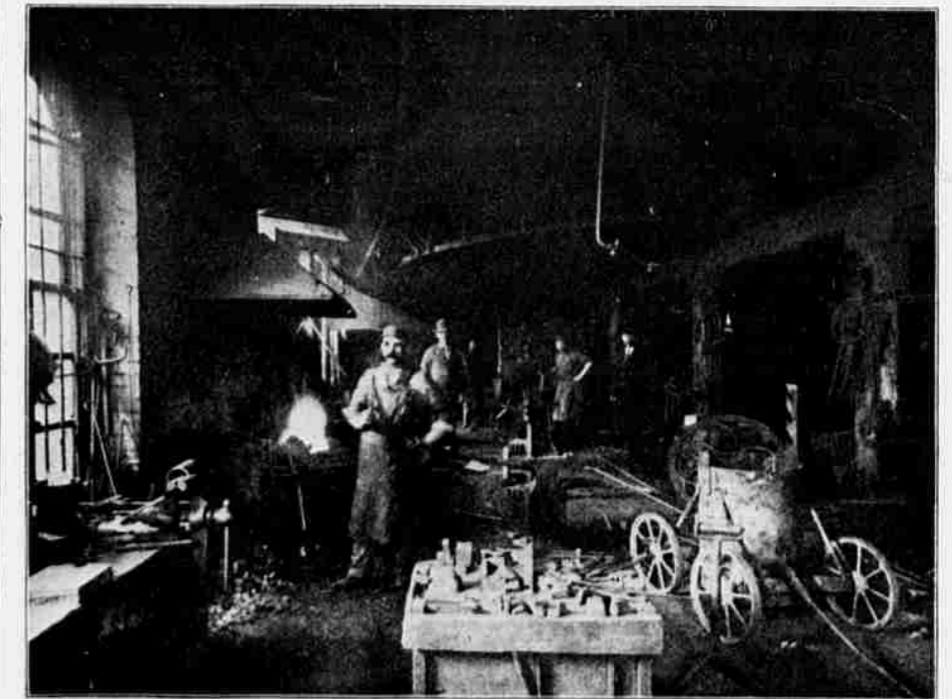
Fifteenth and Jackson Streets, Omaha.
E. ZABRISKIE, Agent. J. B. COWGILL, Manager.



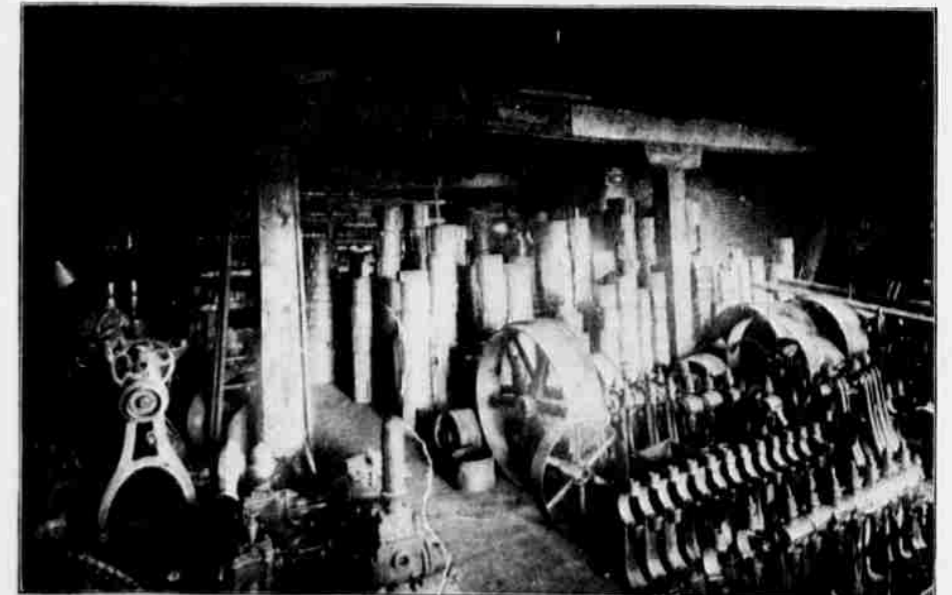
CORNER OF GEAR CUTTING DEPARTMENT.



EAST AISLE ON MAIN FLOOR.



SECTION OF BLACKSMITH SHOP.



PARTIAL VIEW OF STOCK OF IRON AND WOOD PULLEYS, HANGERS, ETC.
Davis & Cowgill Iron Works, established in 1884, has steadily grown until at the present time it is one of the best equipped shops in the west. They do all kinds of machine repairing, heavy forging and brass work; manufacture electric street railway supplies, have the only gear cutting machine in this part of the west, and a finely equipped pattern and model shop in connection with the plant. Always carry in stock a full assortment of wood and iron pulleys, hangers, shafting, couplings, collars, pillow boxes, etc. Orders from out of town receive prompt attention.



SKATING AT HANSCOM PARK—MISS STOCKBRIDGE AND LOUIS R. BOSTWICK.



GROUP OF HANSCOM PARK JUVENILES ON SKATES—Photo by Louis R. Bostwick.