

PART OF THE UNITED STATES

Unexampled Contribution Made by the Federal Government.

ALL DEPARTMENTS IN CO-OPERATION

Fine Exhibits Which Greet the Eye of the Visitor to the Beautiful Government Building.

The magnificent building at the west end of the lagoon which, with its contents, represents the contribution of the United States government to the exposition is one of the first objects to command the attention of the visitor to the main court.

While this is not the largest exhibit the government has made, it is conceded to be by far the most interesting and valuable.

The bill that was passed by congress June 10, 1897, provided for an appropriation of \$200,000 for this exhibit. It provided for an exhibit from the executive departments, the Smithsonian institute, the United States Fish commission and the National museum of such articles as might illustrate the functions of the government in time of peace and the resources that it might command in time of war.

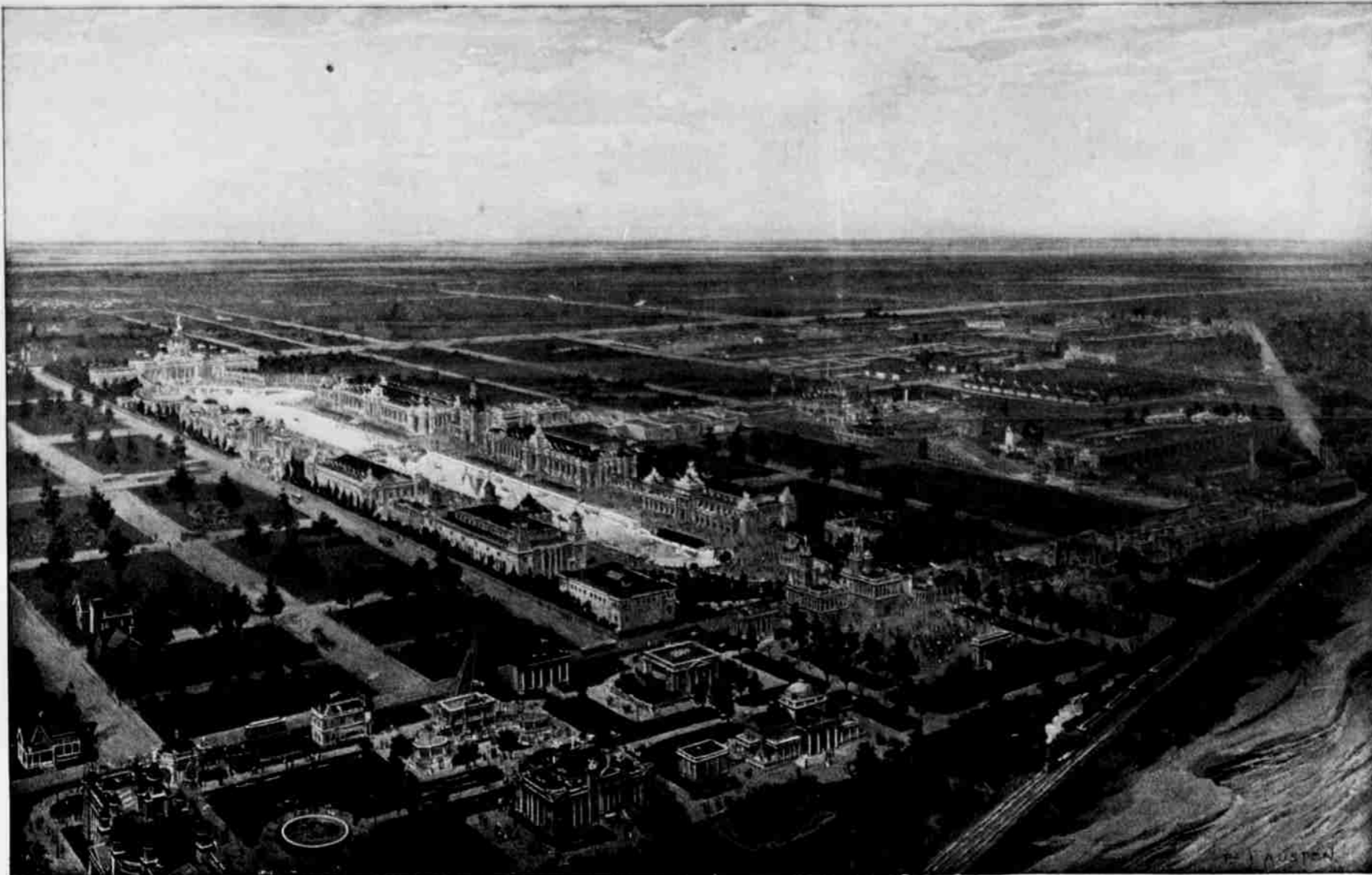
The Department of the Interior presents exhibits from the patent office, the general land office, the bureau of Indian affairs, the geological survey and the bureau of education.

Work Begins Early. Soon after the contract for the erection of the building was let to George Moore of Nashville and it was completed within the time called for by the contract and at a cost of about \$60,000.

While the work was under full headway the beginning of the war interfered materially with the plans of the army and navy departments.

But in spite of these disadvantages the work was satisfactorily completed and although there might have been a more extensive representation of the functions of the army and navy departments if the officers had been less actively engaged the martial spirit of the times will operate to make their exhibits among the most fascinating spectacles of the exposition.

The most important connection of the Department of State with the exposition consisted in the notice that it extended to foreign governments that it was an international affair and inviting them to participate.



NEW OFFICIAL BIRDSEYE VIEW.

national affair and inviting them to participate. This brought numerous responses. Lord Salisbury first of this government that the British government would use every means to assist exhibitors and to disseminate information relative to the exposition.

Aside from this the department is represented by a very interesting exhibit. It includes portraits of the presidents from Washington to McKinley, a variety of documentary matter illustrating the workings of the consular, diplomatic and other bureaus, and a vast collection of records of the highest historic interest.

The Department of the Interior presents exhibits from the patent office, the general land office, the bureau of Indian affairs, the geological survey and the bureau of education.

The treasury exhibit includes some of the most interesting features of the building. Here is a collection of the currency issued by the government, including coins and notes of all denominations and issues.

But in these panicky times the exhibit of the War department commands exceptional interest. All the various subordinate departments are represented by a variety of martial effects that it would require a volume to describe.

The models of upwards of a score of the best known vessels of the American navy are a conspicuous feature of the naval exhibit.

engraved space being about seven-eighths of an inch wide by about one and three-eighths long. The designs are also radically unlike those of the ordinary stamps—consisting of a border (substantially the same in all denominations, except that the figures and letters representing values are different), and a central scene indicative in some way of the development of the great region beyond the Mississippi river.

The border, which forms in its inner line an irregular oval framework to each of the scenes represented, consists of a stuted figure on either side, with interior crossbars, beginning in a single line near the bottom of the stamp, and enlarging until it reaches a shield in each of the upper corners, wherein is engraved in white the Arabic numeral of denomination—the dollar mark being also included in the case of the one and two-dollar stamps.

The fish commission exhibit is also of extraordinary interest. It illustrates the various apparatus for collecting, dredging, deep sea sounding and preserving specimens. The results are indicated by a vast collection of hundreds of varieties of shell fish and mollusks.

The scope and functions of the Department of Agriculture is also exhaustively illustrated. Among the divisions are the Bureau of Animal Industry, the Division of Pomology or Fruits, the Division of Botany, the Weather bureau, forestry and fiber investigation.

EXPOSITION POSTAGE STAMPS

Official Description of the New Series Issued in Honor of the Great Show.

As a result of the efforts of Manager Rosewater of the Department of Publicity, the Postoffice department has ordered a full series of new postage stamps in commemoration of the exposition. These stamps will be issued in nine denominations, and their engraving will be equal to the best ever issued by the department.

One-cent—"Marquette on the Mississippi," from a painting by Lamprecht, now in possession of the Marquette college of Milwaukee, Wis., representing Father Marquette in a boat on the upper Mississippi, preaching to the Indians. Color, dark green.

Two-cent—"Farming in the West," from a photograph, representing a western grain field with a long row of plows at work. Color, copper red.

Four-cent—"Indian Hunting Buffalo," reproduction of an engraving in Schoolcraft's History of the Indian Tribes. Color, orange.

Five-cent—"Fremont on Rocky Mountains," modified from a wood engraving, representing the Pathfinder planting the United States flag on the highest peak of the Rocky mountains. Color, dark blue.

Eight-cent—"Troops Guarding Train," representing a detachment of United States soldiers conveying an emigrant train across the prairies, from a drawing by Frederick Remington, permission to use which was kindly given by the publisher, R. H. Russell of New York. Color, dark blue.

Ten-cent—"Hardships of Emigration," from a painting kindly loaned by the artist, A. G. Heaton, representing an emigrant and his family on the plains in a "prairie schooner," one of the horses having fallen from exhaustion. Color, slate.

Fifty-cent—"Western Mining Prospector," from a drawing by Frederick Remington

(permission to use which has been kindly given by the publisher, R. H. Russell of New York), representing a prospector with pack mules in the mountains, searching for gold. Color, olive.

One-dollar—"Western Cattle in Storm," representing a herd of cattle, preceded by the leader, seeking safety from a gathering storm, reproduced from a large steel engraving after a picture by J. MacWhirter, the engraving having been kindly loaned by Mrs. C. D. Johnson. Color, light brown.

Two-dollar—"Mississippi River Bridge," from an engraving—a representation of the great bridge over the Mississippi at St. Louis. Color, sapphire blue.

No transmississippi postal cards or stamped envelopes will be issued. Although this series of stamps will be discontinued on December 31, 1898, they will be good for postage at any time afterward.

SOUVENIR EXPOSITION MEDAL

Profile Reproduces a Composite Photograph of Representative Beautiful Western Women.

When the plans for the Transmississippi Exposition were in their infancy the question of a souvenir medal was broached and a most unique design selected, which will command the service of the composite photographers.

The idea of composite photography was utilized in making the souvenir medal of the exposition. A corps of competent judges was appointed in each of the transmississippi states. They selected from the beautiful women within each of their boundaries two of the fairest, and photographs of these were sent to headquarters at Omaha.

The result, which will ornament one side of the medal, will aptly illustrate the best and strongest type of western young womanhood. On the reverse side of the medal will appear an Indian in the act of spearing a buffalo.

In addition to the souvenir medals, of which a large quantity will be furnished, the government will also have a number of gold, bronze and silver medals struck off as awards to exhibitors under the rules adopted by the exposition management and printed on the back of each blank application that was sent out to the prospective exhibitors.

The above boy can be seen any day at KUHNS'S SODA FOUNTAIN, 15TH AND DOUGLAS STS., which is noted for serving the very best soda water in the world.



SECTION OF A. HOSPE WAREHOUSES.

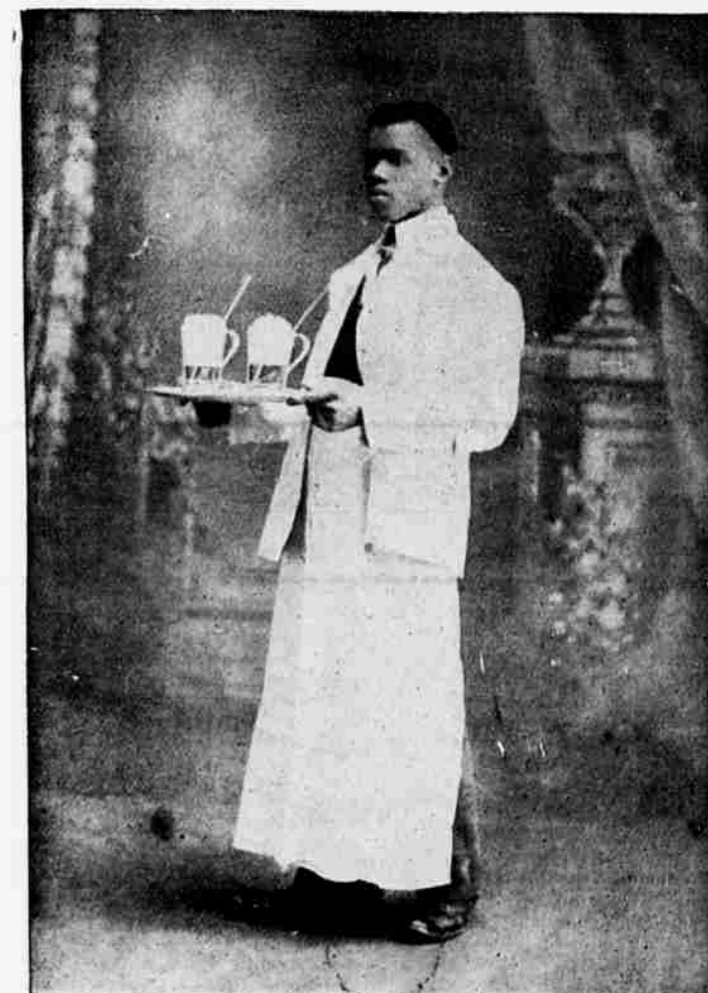
Kimball Pianos, Knabe Pianos, Kranich & Bach Pianos, Hallett & Davis Pianos, Whitney Pianos, Howard Pianos, Hinze Pianos, Schubert Pianos, Reliable Goods, Reliable Goods, Lowest Prices, Lowest Prices, Easy Payments, Easy Payments, Wholesale and Retail, Wholesale and Retail.

A. HOSPE,

Wholesale, 1614 Izard Street.

Retail, 1513 Douglas Street.

OMAHA, NEB.



THE above boy can be seen any day at KUHNS'S SODA FOUNTAIN, 15TH AND DOUGLAS STS., which is noted for serving the very best soda water in the world.

MANUFACTURES BUILDING.

MINES AND MINING BUILDING.

AGRICULTURAL BUILDING.

