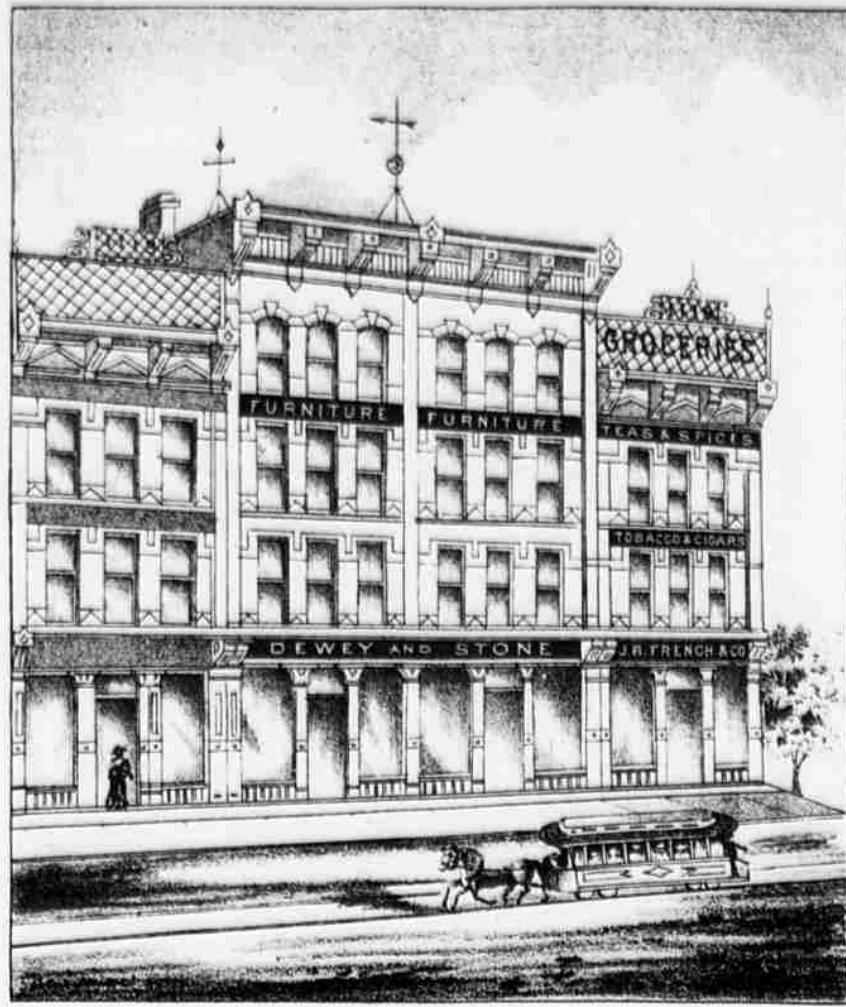
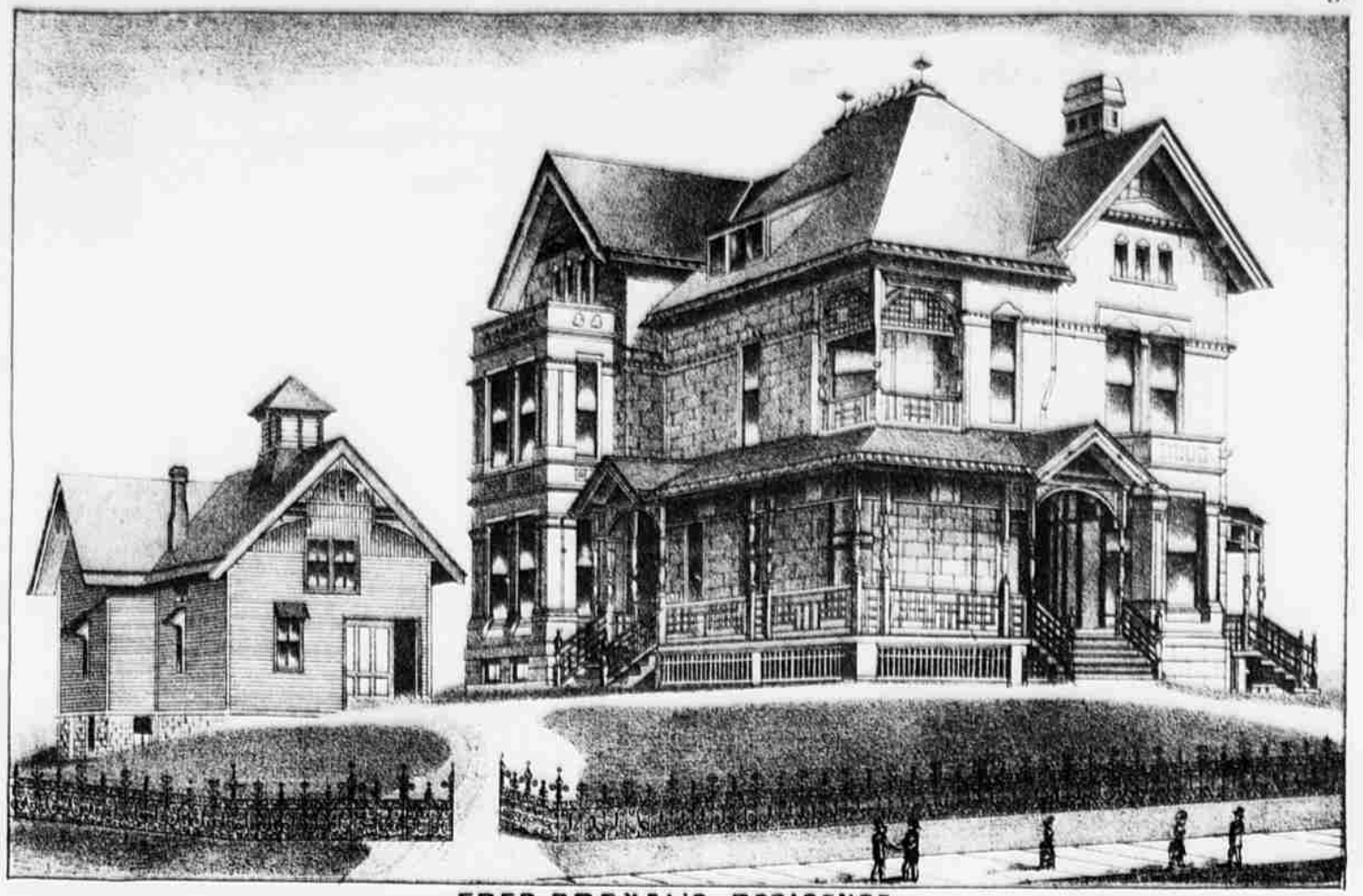




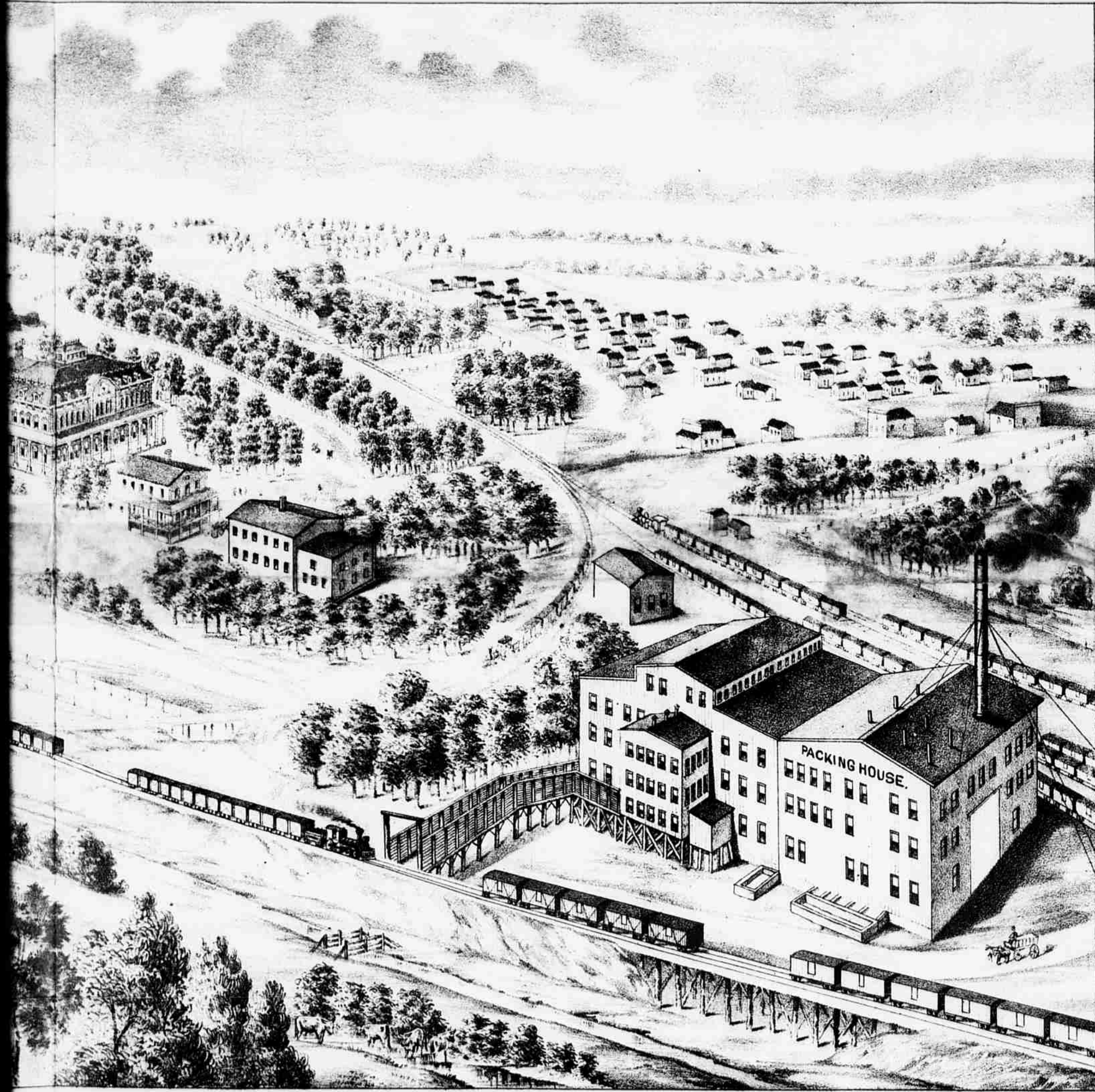
NEBRASKA NATIONAL BANK
ERECTED 1883



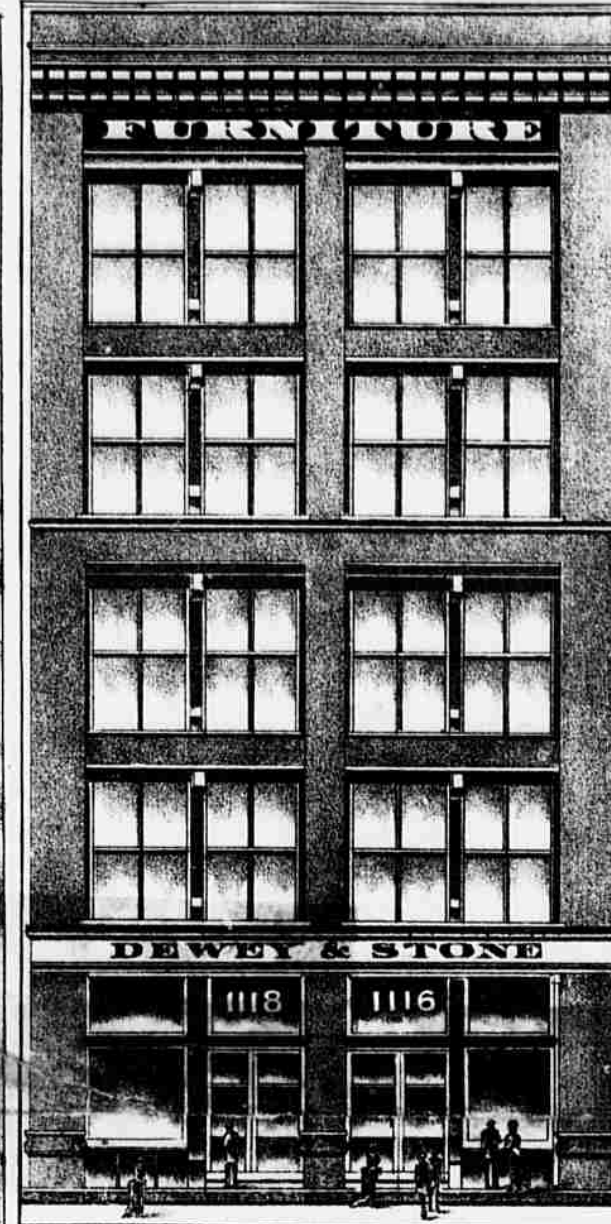
DEWEY & STONE
112 TO 115 FARNAM ST.



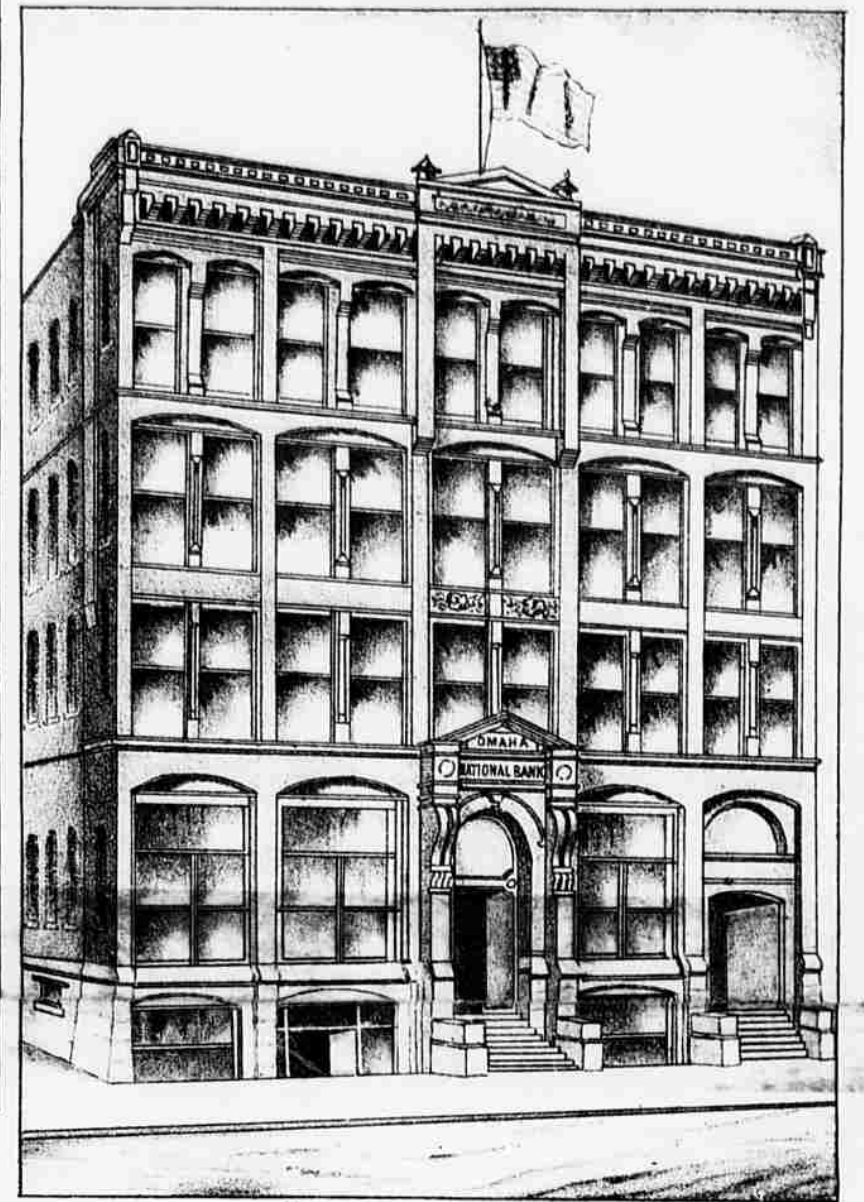
FRED DREXEL'S RESIDENCE.
ERECTED 1884.



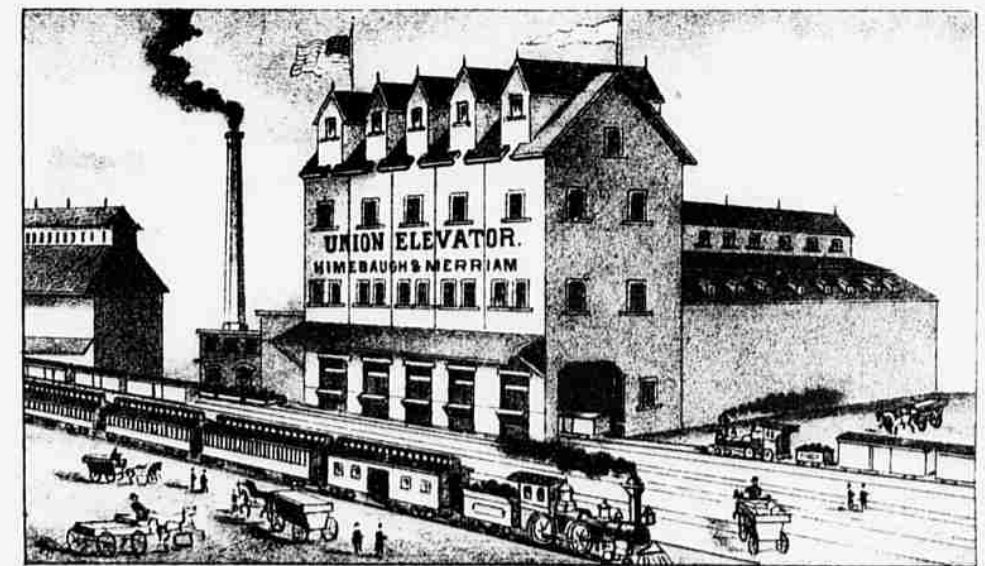
STOCK YARDS, PACKING HOUSES & STOCK EXCHANGE.



DEWEY & STONE'S BUILDING.
ERECTED 1884.



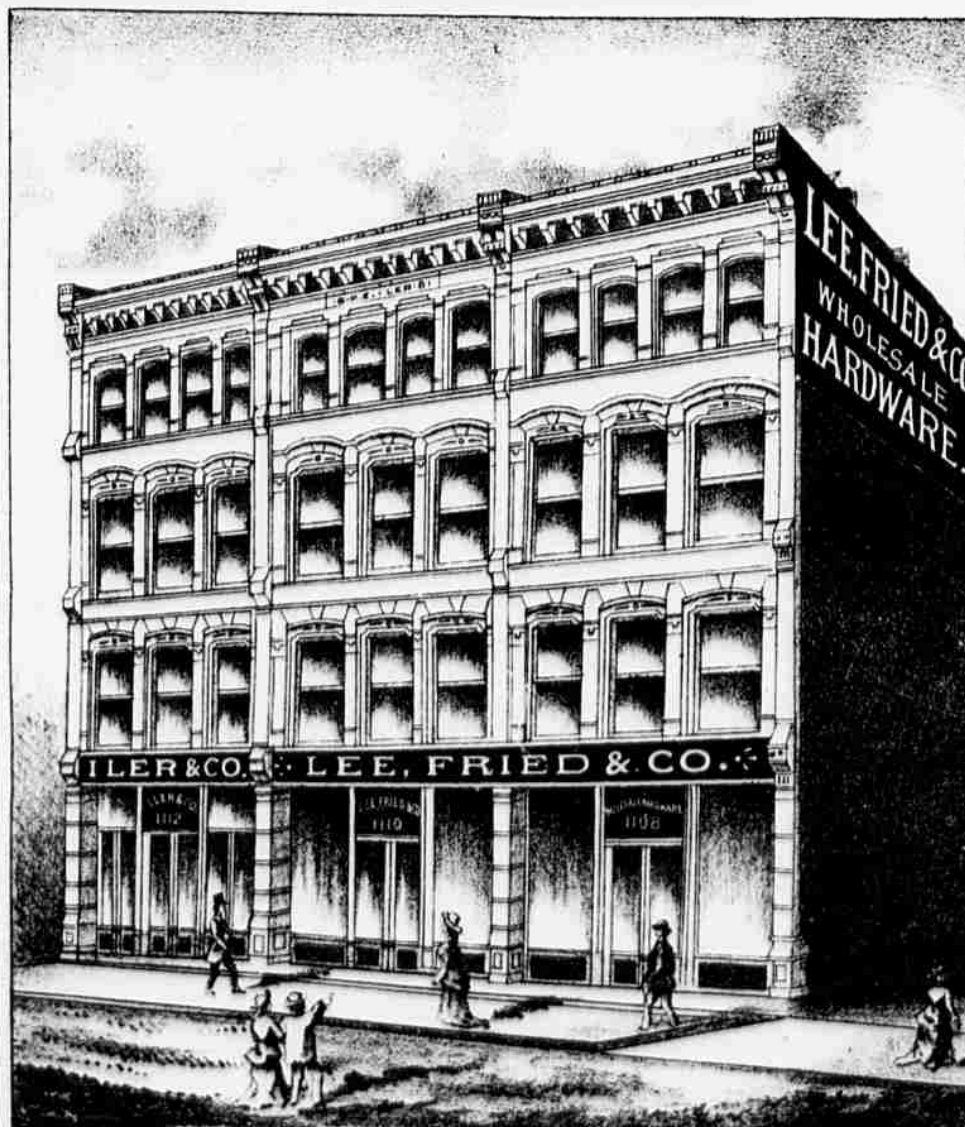
OMAHA NATIONAL BANK
ERECTED 1883.



UNION ELEVATOR.



BOYD'S OPERA HOUSE
ERECTED 1881



P. E. ILER'S BUILDING
ERECTED 1881



PARLIN, ORENDORFF & MARTIN, AGRICULTURAL WAREHOUSE.