



A Newspaper That Gives The News Fifty-two Weeks Each Year For \$1.50.

VOLUME XXXX.

RED CLOUD, NEBRASKA, OCTOBER 17, 1912.

NUMBER 42

More About The Court House

Judge Dungan expresses much satisfaction in the prospect of a new court house for Webster county. His official duties during the past year have taken him to a majority of the counties of southwestern Nebraska, and in talking with the Chief man he says that Webster county takes the premium for the most dilapidated court house. Judge Dungan does not make this comparison as a reflection on Webster county, but urges the fact as an argument in favor of a new court house. He urges more especially the need of more adequate facilities for the comfort of juries in their attendance upon the court, greater safety for county records, and more comfortable quarters for the various county offices. As the ranking official in the court house the word of Judge Dungan has much influence with the voters of the county, and we have his assurance that he heartily approves the movement for a new building, lending the plans and details of construction to the tax-payers of the county, who will be called upon to pay the bills. He says what we all know to be a fact, that the present building will fall down or become unfit for use within two or three years, and that the excellent building now proposed can be built as cheaply now as at any time, and probably for less, and that there can be no good reason for opposing the plan suggested for building a new court house.

RED CLOUD, NEBR., Oct. 1st, 1912.
GENTS:—The proposed Court House, to be voted upon this fall at the November Election, you may describe as follows:—The building being a two story with basement, Fire Proof. Size 84 x 84 feet on the ground. The building will be finished up in modern style, provided with heat, plumbing and ventilation.

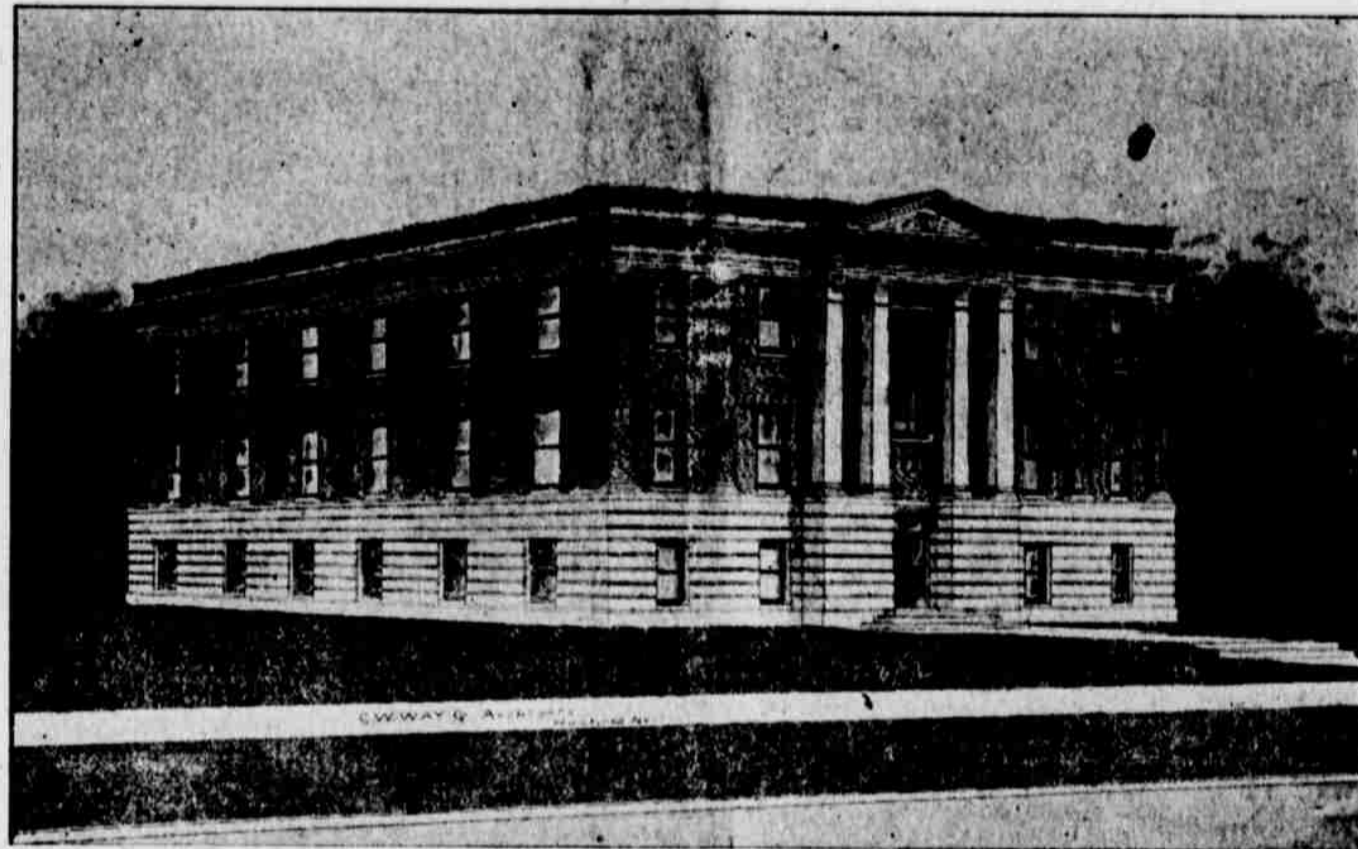
The basement will contain County Surveyor's room, County Superintendent's room, ladies toilet room, gents toilet room, historical room, four storage vaults, vault for County Superintendent, vault for County Surveyor and Sheriff's entrance.

First Floor will contain County Treasurer's room with vault, County Clerk's room with vault, future County Recorder's room with vault, Probate Court room and County Judge's room, with vault, County Commissioners' room and Abstract room.

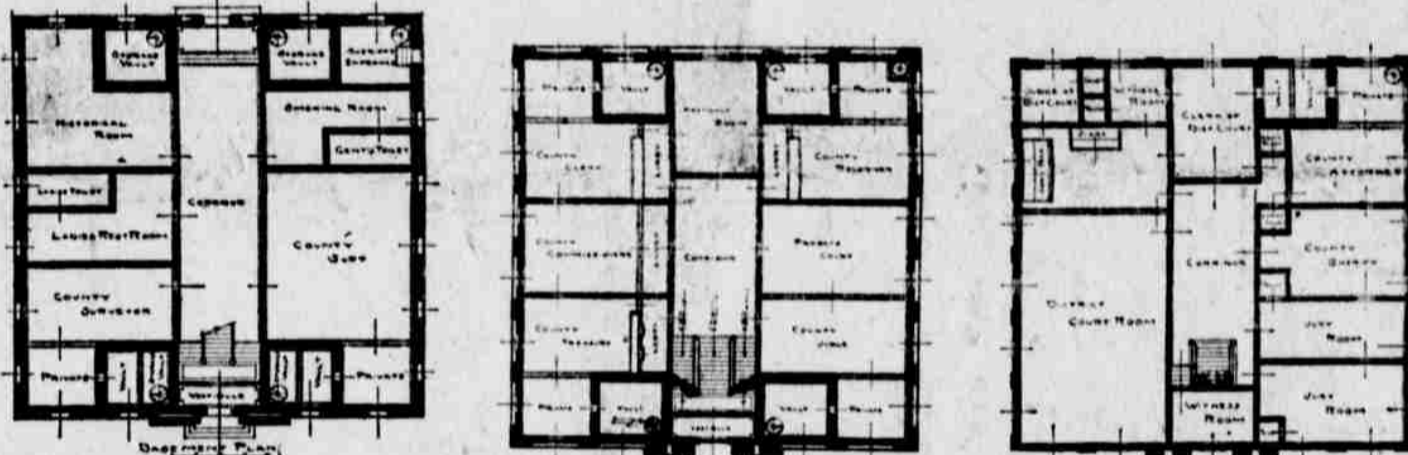
The second story will contain two Jury rooms, County Attorney's room, with vault, County Sheriff's room, Clerk of the District Court's room with vault, two witness rooms, Judge of the District Court, District Court room to seat about 250 people, there will be ladies and gents toilet room for second floor corridor, also provide toilets for each jury room and the Judge of the District Court.

The style of the building is carried out in Colonial design, cut of which will show for itself.

Yours Truly,
E. W. Ross,
County Clerk.



Proposed New Court House For Webster County



FLOOR PLANS OF THE NEW COURT HOUSE

Correspondents

COWLES

R. B. Thompson was in Red Cloud Tuesday on business.

Samuel Fuller is having a new barn erected on his farm northwest of Cowles.

Rev. Davis will preach at the Christian church Sunday next both morning and evening.

Law Fuller left for Lincoln Wednesday after a short visit with friends and relatives.

The M. E. people are putting in a sidewalk in front of the Parsonage. They also cemented a cave and put in

a front walk which makes an improvement.

A quite a number of the fellow citizens of Cowles went to Red Cloud Tuesday and Wednesday to attend the trial between Keeney vs Village of Cowles.

C. W. Fuller and M. R. Adamson left for Omaha Monday to try and buy some cattle to feed this winter. They expect to feed them on the Chas. Adamson farm.

Mr. and Mrs. Chas. Bennett came home Monday from an extended visit at Ballyville, Kas. He reports the corn crop in that part of the country not as good as it is in Nebraska.

KANSAS PICKUPS (FROM SMITH COUNTY)

Mr. and Mrs. Jess Hookings spent Sunday at the home of John Masterman's.

Mr. and Mrs. T. S. Spurrier spent Sunday with their son Elmer and family.

Roy Meyers and family also Ray Simmons and family were visitors at Bert Payne's Sunday.

Wm. Bogarth, Ray Simmons and Chas. Fraiser are among the heavy losers with hog cholera.

E. E. Spurrier has completed a garage for Andrew Upp. It is a handsome frame building with a cement floor.

Dave Bell, Crede Perry and Sankey Hooper came in from Western Colorado the first of the week. Mr. Bell brought about three hundred head of cattle with him.

Congregational Church Notices.

"The Angels and the Four Winds" will be the subject Sunday morning. Sunday School at 10. Evening preaching service at 7:30. Subject: "The picture of an all round young man." Midweek meeting on Wednesday at 7:30. Ladies Aid Thursday afternoon at the home of Mrs. George Pope.

JOHN J. BAYNE, pastor.

Ex-President Roosevelt Shot

While standing in an automobile on the streets of Milwaukee, howling to the greeting of a large crowd, Hon. Theodore Roosevelt was shot in the chest by a fanatic. Latest reports indicate that the ex-President will recover. This event is greatly to be deplored. Regardless of political affiliations the sympathy of the American people is with Mr. Roosevelt and his family. However this incident again demonstrates the weakness of our American police system. In our much boasted land of liberty our public men seem to be in the greatest danger. Every man should be allowed to express his convictions on the questions of the day and every official should be allowed to perform the duties of his office without the fear of possible harm. It is far better to prevent crime than to punish criminals after crime is committed. This is the third attempt on the lives of prominent persons in very recent years. McKinley at Buffalo, Gaynor at New York and Roosevelt at Milwaukee. All three are instances of inadequate police protection. The real wonder is that these events do not occur oftener since our public men seem to be in danger of every fanatic in the country.

We earnestly hope for the speedy recovery of Mr. Roosevelt and trust that he will soon be as well and vigorous as ever.

District Court Proceedings

State of Nebraska vs Wm. Galbreth and Bert Miller. Charged with burglary, both plead guilty and were by the Court paroled on the understanding that they were to violate no law, abstain from the use of intoxicating liquors and report to the Court on the first day of each term for a period of

one year. Bail was furnished for both defendants in the sum of \$300 each, signed by Wm. F. Cole, Peter A. Wulbrandt and Edwin J. Overing Jr.

State of Nebraska vs Charles Reed. Complaint to keep the peace. Case dismissed.

State of Nebraska vs Helen Henry. Complaint to keep the peace. Case dismissed.

Hattie M. Churches vs John Lemke. Damage. Dismissed at plaintiff's costs.

Bessie Cornell vs Ernest Coruelli. Divorce. Dismissed at plaintiff's costs.

Chicago Lumber Co. vs Clarence M. Paugh. Settled and dismissed.

Charles F. Cather vs John B. Stanser. Damage. Verdict for plaintiff for \$327.00.

First National Bank of Campbell vs Wm. Cooper and C. J. Ware. Settled and dismissed.

Alice L. Scott vs First National Bank of Blue Hill and C. F. Gund. Verdict for plaintiff for \$143.80.

Peoples Bank of Red Cloud vs Ed. Fry et al Judgment for plaintiff against all the defendants except Carrie Fry for \$170.00.

George E. Coon vs Dora and Josephine Dooze. Infraction. Court finds for plaintiff, perpetual injunction allowed.

Roy A. Bailey and wife vs Elsie Long et al. Partition. Sale of land confirmed as reported by referee.

I. A. Banks vs Phoebe Robertson et al. Judgment for plaintiff.

Annie Turner et al vs Frank Hessman. Partition. E. G. Caldwell appointed Guardian Ad Litem for defendants. Charlotte McKee, Edward Hessman and Frederick McKee with leave to answer instanter. S. R. Florence appointed referee. Partition granted as prayed for.

Joseph Henrichs, by his next friend Frank Henrichs vs Helen Henrichs. Default of defendant entered.

J. E. Daily vs White Hardware Co. Demurrer of defendant sustained.

Austin M. Cook vs John H. Bentley et al. Partition. On motion of plaintiff case dismissed.

CLOCKS

A New Stock of Mantel and Parlor Clocks.

E. H. Newhouse

Jeweler and Optometrist
C. B. & Q. Watch Inspector

Bresley Piano Co. vs Albright. Bros Demurrer of defendants overruled and 30 days given to answer.

Marie Smith Beck vs Arthur L. Beck. Divorce. Finding for plaintiff that she have divorce on the ground of drunkenness. Custody of minor child given to plaintiff. \$250 alimony, \$10 per month for child during minority, \$25 attorney's fees.

Henry G. Keeney vs Village of Cowles. Action to disconnect certain territory from the village. Court generally finds for the defendant village and against the plaintiffs John Vase, E. L. Fawcett, Elizabeth Gifford and Charles Francis that their lands be retained within said village. Court finds generally for Samuel Fuller, Henry G. Keeney and Adam Spracher, detaching a portion of their territory.

Kate Alexander vs Ashley H. Alexander. Divorce. Settled and dismissed.

Pardon E. Fairfield vs Isabelle J. Fairfield. Divorce. Suit money and attorney's fees allowed.

Wm. H. Tabor vs Grace Tabor. Divorce. Case continued for service.

John H. Stumpenhorst vs Jessie Stumpenhorst. Divorce granted plaintiff.

A perfect town is that in which you see the farmers patronizing the home merchants, the laborers spending the money they earn with their tradesmen, and all animated by a spirit that they will not purchase articles abroad if they can be bought at home. The spirit of reciprocity, between men and mechanics, tradesmen and manufacturers, results every time in making the town a perfect one to do business in.

Jealousy.

The man who is bluffing his way through the world is hated most bitterly and despised most deeply by the man who is trying without success to do the same thing.

Farm Loans

At Lowest interest, best option, least expense. Call for me at State Bank, Red Cloud. C. F. CATHER.

DR. CHAS. E. CROSS

DENTIST
OVER STATE BANK
Red Cloud, Nebraska

A. C. AMES, M. D.

Physician and Surgeon
RED CLOUD, NEBRASKA
Same Office and Telephone number formerly used by Dr. Reinos

BE ON THE SAFE SIDE

It is true that you are not likely to lose your savings if deposited in any good bank—but you are **ABSOLUTELY CERTAIN NOT** to lose them when you deposit where you have the additional protection of the State Guaranty Law. Such protection is offered you here.

It is surely "good business" to deposit where you get absolutely guaranteed protection, in preference to placing money in a bank that guarantees nothing.

The State Guaranty Law is behind every dollar deposited in this bank, and when you open an account here, you are **ON THE SAFE SIDE.**

WEBSTER COUNTY BANK
RED CLOUD, NEBRASKA