

WATCH FOR IT

IT WILL COMMENCE SHORTLY

YOU WILL CERTAINLY ENJOY

Our Next Serial Story

A Romance of intense interest--one of the Best of this Popular Author's always entertaining works.

The Ring and the Man
By *Cyrus Townsend Brady*



This thrilling and vigorous story by one of the best known writers of the day

Is About to Appear in This Paper

It is a story that scintillates with action and tells the story of a rich man of strong personality and his fight with a powerful political machine.

The power of Wealth, the power of Politics, the power of Love—in the triple combat, which wins? You'll find the answer in

The Ring and the Man

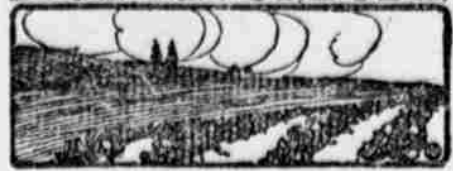
Watch for the Opening Chapter

Don't Miss an Issue Until You Find It

If You Miss it You'll Regret it

If you read the opening chapters you will await each succeeding number with an increasing interest, and wish for more of it

HORTICULTURE



MULCH FOR THE STRAWBERRY

Protects Them From Injury of Freezing and Thawing and Conserves Moisture Fruit Needs.

The average farmer doesn't grow strawberries at all and many of those who do entirely neglect to mulch them. The benefits of mulching are threefold; to protect from the injury of freezing and thawing, to keep the berries clean and free from grit and to conserve moisture that the fruit often needs at time of ripening. In favorable seasons berries can be successfully grown without mulching, but for a term of years there is no care that pays better. The work is best done the first time the ground is frozen hard and any kind of straw that is perfectly free from grass or weed seed is good material, says a writer in the Ohio Farmer.

I have made two bad mistakes in selecting material. Once when I used wheat straw that had timothy seed in it and again when I used clover hay. I had such a good stand of timothy and clover that I couldn't fruit the bed the second season, but had to plow it and start a new one. While the work is considerably more there is no material quite so good for mulching as leaves. This season a strong wind swept the leaves clean from the lawn and lodged them in a great



Early Ozark.

bank against the garden fence, right close by the strawberry bed, so that, with large baskets, it was but a few minutes' work to put them where they would do the greatest good.

As soon as all danger of freezing is over in the spring I remove a part of the mulch that is directly over the plants, taking off just enough so that I can see an occasional green leaf peeping up through, raking it between the rows where it is left to act as a mulch to conserve moisture and make a clean path on which to walk while picking the fruit. The plants will push up through a quite heavy mulch and it is well to leave enough directly over the plants to thoroughly protect the berries from grit; for aside from the extra work of freeing them from the dirt it is well known that it is possible to wash out much of the delicate flavor of the strawberry by repeated rinsings.

TREATMENT OF CANE FRUITS

If Not Wanted Young Suckers and Shoots Should Be Dug Up—Cut Out All the Dead Wood.

The young shoots and suckers from the old canes, if not wanted, should be dug up. Cut out all dead wood, leaving three thrifty stock in each hill. If a new plantation is to be made, dig up carefully with a ball of earth the strongest young shoots growing in the rows. Set these in clean, mellow ground; mark the rows five feet apart; set the plants three feet apart in the row. For the family garden set two feet apart in the row and train to a wire trellis. This is decidedly the best method, as the bed can be properly worked and more and more and firmer fruit can be grown. The Cuthbert is the leading red raspberry. It is productive, hardy, with large, healthy foliage. Golden Queen, a yellow variety, seedling of the Cuthbert, is a productive and hardy variety. Being of large size and of a beautiful color, I consider it one of the best for family use as well as for market. Cumberland is the popular market black cap.

Clean out the grass and weeds in the rows; spread one forkful of rotted manure around each hill; cultivate the ground between the rows, then throw a light furrow to the hills on each side of the rows.

The dead wood of the currant bushes should be cut close to the ground, fork out the grass and weeds, and give the same fertilizing and culture as for raspberries. The work should be done in the fall and not left until spring.

Newly Set Strawberry Beds.

Pick off all the blossoms from newly set strawberry beds; thus you send all the plants' strength back into themselves—into growth. It is unwise to let plants fruit the first season.

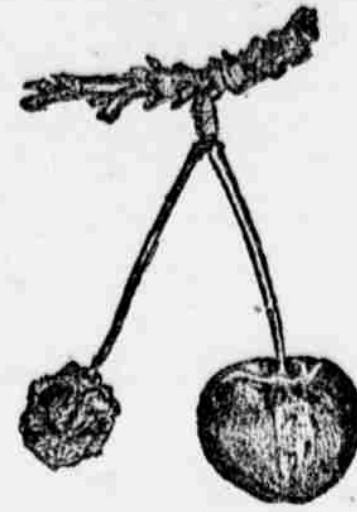
Strawberry Plants.

The new strawberry plantation should be made before any other outdoor work is attended to. The success hinges largely upon early planting, in a cool, moist soil.

DISEASES OF CHERRY TREE

Leaf-Spot May Be Prevented by Use of Bordeaux Mixture—Mildew Usually Found on Sprouts.

Leaf-spot and mildew—the first named disease is caused by what is called "Shot-hole Fungus" and may be successfully prevented by the use of bordeaux mixture, except that only half the strength of the mixture may be applied with safety to the foliage of the cherry. The mildew is usually found chiefly upon sprouts and young



Sound and Rotted Cherries.

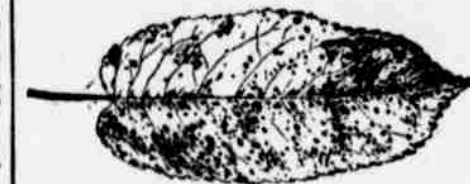
shoots. If spraying is required for mildew, two applications will probably be very satisfactory.

Leaf-spot symptoms are everywhere abundant and are really of very diverse origin. In any example in which the leaf tissues are locally invaded by a parasitic fungus we may expect evident effects. In the downy mildew troubles there may be wet-rot symptoms when the weather is moist, after the leaves have become badly diseased they may appear to die very suddenly because the gradual invasion of the areas has been overlooked. In many other leaf diseases no such rapid multiplication or reproduction of the parasite is possible and limited dead patches or spots are the result.

These leaf troubles are commonly very evident during rainy seasons and are preventable by spraying the foliage of the diseased plants at repeated intervals, thus keeping a supply of the fungicide on the leaves to arrest renewed spore development.

Cherry rot, or brown-rot, affects all stone fruits, including peach, apricots, etc. It is by far the most serious and baffling of cherry diseases to the commercial cherry grower.

The decay of the fruit is caused by this fungus. The conditions of the season may favor or retard the spread and development of the disease. The threads of the fungus survive in the rotted fruits, which may hang on the trees unless removed. Careful re-



Leaf Attacked by Spot Fungus.

moval of all rotted fruit and spraying for the fungus, as per the calendar, may be relied upon to save a part of the fruit, but judgment and attention to the details of the work are always required. It is to be understood, also, that checking the curculio is a sure means of helping to check rot.

Fruit Growers.

Fruit growers are mostly in the forestry business. They train their trees to produce wood and wonder why crops are late in appearing and dull in color when they come. They should be in the fruit growing business, and prune so as to let in light and air, also to induce early productivity. It is as easy to grow good fruit as poor firewood.

HORTICULTURAL NOTES

Seeds of apples and pears should be sown early in good, rich soil.

There are several hundred serious and injurious plant diseases.

It is said that apples are an antidote for liquor and tobacco.

Hellebore is the best poison to use on gooseberry and currant bushes.

Red raspberries thrive best in a deep, rich, yellow, cool, moist, well-drained loam soil.

Wherever fruit or truck crops are raised commercially spraying forms part of the care of the crop just as much as does tillage, pruning and fertilizing.

If rose bushes have been injured by the frost, the tops should be cut off at or below the point where the injury stopped, which is sometimes close to the ground.

Strawberries must not be uncovered too early. The mulch should stay on late, so as to retard growth and thus make the bloom come after the late spring frosts.

Old apple, pear and cherry trees should have the dead and all small cross branches that interfere with the free admittance of light and air to the body of tree cut out.

Those who used the lime-sulphur spray last year were satisfied with results, both for San Jose scale and scab, and will use same hereafter in preference to bordeaux.

The use of orchard stoves or smudge pots for protection of fruits against late spring frosts is only in the experimental state in the east, although a regular practice in large orchards of the far west.



PATENTS: Fortunes are made in patents. Protect yourselves. Our 64 page book free. Fitzgerald & Co., Box 4, Washington, D. C.

SURELY DESERVES A MEDAL

Record Act of Bravery That Is Set to Credit of Intrepid New York Man.

The bravest man in New York made his appearance in a Broadway store last week. He carried an enormous bandbox which contained an enormous hat in which the man wanted what he considered an enormous amount of money refunded. The man was pretty mild and while looking for some one who had the authority to negotiate the transaction he talked loud enough for everybody to hear.

"My wife bought this hat," he said. "She doesn't need it. She has already bought three hats this spring. She paid \$25 for this one. She has never worn it. It just came home last night. I can't afford to throw all that money away and I want you to take the hat back. She wouldn't bring it down, so I undertook the job myself."

"By the side of that man Napoleon was a cringing coward," said the young woman who had made the sale. "Imagine his flouncing into a Parisian millinery shop with a hat that he didn't want Josephine to buy. He couldn't have done it. Very few men can. Once in a long while some poor New Yorker with the courage of desperation in his heart returns merchandise which he cannot afford to buy for his wife and his audacity upsets the whole store for a month."

New Fishing Industry.

Albion fishing in Nova Scotia waters has become interesting, but for financial reasons. These fish frequently weigh over 500 pounds and are known as horse mackerel. A number were shipped to Boston last season. The average price there is three and one-half cents per pound. Formerly these fish were considered a nuisance to the fishermen.

Where They All Happen.

"I heard of a remarkable adventure with a box constrictor."
"Where did it happen?"
"At a cafe table."

Riches.

Knicker—Brown counts his wealth in seven figures.
Bocker—Perpendicularly.

There is no fool like the peacemaker who interferes between husband and wife.

MENTAL ACCURACY

Greatly Improved by Leaving Off Coffee

The manager of an extensive creamery in Wis. states that while a regular coffee drinker, he found it injurious to his health and a hindrance to the performance of his business duties.

"It impaired my digestion, gave me a distressing sense of fullness in the region of the stomach, causing a most painful and disquieting palpitation of the heart, and what is worse, it muddled my mental faculties so as to seriously injure my business efficiency."

"I finally concluded that something would have to be done. I quit the use of coffee, short off, and began to drink Postum. The cook didn't make it right at first. She didn't boil it long enough, and I did not find it palatable and quit using it and went back to coffee and to the stomach trouble again."

"Then my wife took the matter in hand, and by following the directions on the box, faithfully, she had me drinking Postum for several days before I knew it."

"When I happened to remark that I was feeling much better than I had for a long time, she told me that I had been drinking Postum, and that accounted for it. Now we have no coffee on our table."

"My digestion has been restored, and with this improvement has come relief from the oppressive sense of fullness and palpitation of the heart that used to bother me so. I note such a gain in mental strength and acuteness that I can attend to my office work with ease and pleasure and without making the mistakes that were so annoying to me while I was using coffee."

"Postum is the greatest table drink of the times, in my humble estimation." Name given by Postum Co., Battle Creek, Mich.

Read the little book, "The Road to Wellville," in pkgs. "There's a reason." Ever read the above letter? A new one appears from time to time. They are genuine, true, and full of human interest.